



Full wwPDB X-ray Structure Validation Report ⓘ

Feb 1, 2016 – 06:50 AM GMT

PDB ID : 2YIC
Title : CRYSTAL STRUCTURE OF THE SUCA DOMAIN OF MYCOBACTERIUM SMEGMATIS ALPHA-KETOGLUTARATE DECARBOXYLASE (TRICLINIC FORM)
Authors : Wagner, T.; Bellinzoni, M.; Wehenkel, A.M.; O'Hare, H.M.; Alzari, P.M.
Deposited on : 2011-05-11
Resolution : 1.96 Å(reported)

This is a Full wwPDB X-ray Structure Validation Report for a publicly released PDB entry.
We welcome your comments at validation@mail.wwpdb.org
A user guide is available at
<http://wwpdb.org/validation/2016/XrayValidationReportHelp>
with specific help available everywhere you see the ⓘ symbol.

The following versions of software and data (see [references ⓘ](#)) were used in the production of this report:

MolProbity : 4.02b-467
Mogul : 1.7 (RC4), CSD as536be (2015)
Xtriage (Phenix) : 1.9-1692
EDS : rb-20026688
Percentile statistics : 20151230.v01 (using entries in the PDB archive December 30th 2015)
Refmac : 5.8.0135
CCP4 : 6.5.0
Ideal geometry (proteins) : Engh & Huber (2001)
Ideal geometry (DNA, RNA) : Parkinson et al. (1996)
Validation Pipeline (wwPDB-VP) : trunk26865

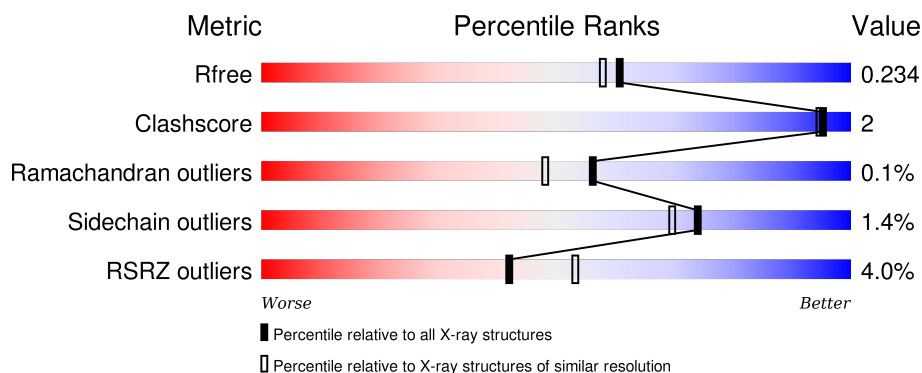
1 Overall quality at a glance

The following experimental techniques were used to determine the structure:

X-RAY DIFFRACTION

The reported resolution of this entry is 1.96 Å.

Percentile scores (ranging between 0-100) for global validation metrics of the entry are shown in the following graphic. The table shows the number of entries on which the scores are based.



Metric	Whole archive (#Entries)	Similar resolution (#Entries, resolution range(Å))
R_{free}	91344	1833 (1.96-1.96)
Clashscore	102246	1953 (1.96-1.96)
Ramachandran outliers	100387	1936 (1.96-1.96)
Sidechain outliers	100360	1936 (1.96-1.96)
RSRZ outliers	91569	1835 (1.96-1.96)

The table below summarises the geometric issues observed across the polymeric chains and their fit to the electron density. The red, orange, yellow and green segments on the lower bar indicate the fraction of residues that contain outliers for ≥ 3 , 2, 1 and 0 types of geometric quality criteria. A grey segment represents the fraction of residues that are not modelled. The numeric value for each fraction is indicated below the corresponding segment, with a dot representing fractions $\leq 5\%$. The upper red bar (where present) indicates the fraction of residues that have poor fit to the electron density. The numeric value is given above the bar.

Mol	Chain	Length	Quality of chain
1	A	868	<div> <div>3%</div> <div>89%</div> <div>6%</div> </div>
1	B	868	<div> <div>5%</div> <div>89%</div> <div>7%</div> </div>
1	C	868	<div> <div>3%</div> <div>89%</div> <div>7%</div> </div>
1	D	868	<div> <div>5%</div> <div>88%</div> <div>5%</div> <div>7%</div> </div>

The following table lists non-polymeric compounds, carbohydrate monomers and non-standard

residues in protein, DNA, RNA chains that are outliers for geometric or electron-density-fit criteria:

Mol	Type	Chain	Res	Chirality	Geometry	Clashes	Electron density
3	MG	D	2002	-	-	-	X

2 Entry composition

There are 5 unique types of molecules in this entry. The entry contains 26363 atoms, of which 0 are hydrogens and 0 are deuteriums.

In the tables below, the ZeroOcc column contains the number of atoms modelled with zero occupancy, the AltConf column contains the number of residues with at least one atom in alternate conformation and the Trace column contains the number of residues modelled with at most 2 atoms.

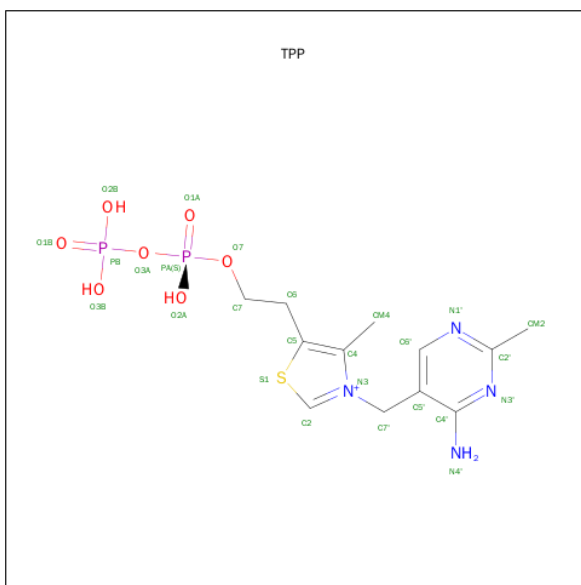
- Molecule 1 is a protein called 2-OXOGLUTARATE DECARBOXYLASE.

Mol	Chain	Residues	Atoms					ZeroOcc	AltConf	Trace
1	A	814	Total	C	N	O	S	0	1	0
			6295	3965	1110	1196	24			
1	B	810	Total	C	N	O	S	0	1	0
			6241	3936	1106	1174	25			
1	C	806	Total	C	N	O	S	0	0	0
			6256	3939	1108	1187	22			
1	D	809	Total	C	N	O	S	0	1	0
			6238	3932	1096	1186	24			

There are 4 discrepancies between the modelled and reference sequences:

Chain	Residue	Modelled	Actual	Comment	Reference
A	360	GLY	-	EXPRESSION TAG	UNP A0R2B1
B	360	GLY	-	EXPRESSION TAG	UNP A0R2B1
C	360	GLY	-	EXPRESSION TAG	UNP A0R2B1
D	360	GLY	-	EXPRESSION TAG	UNP A0R2B1

- Molecule 2 is THIAMINE DIPHOSPHATE (three-letter code: TPP) (formula: C₁₂H₁₉N₄O₇P₂S).



Mol	Chain	Residues	Atoms						ZeroOcc	AltConf
2	A	1	Total 26	C 12	N 4	O 7	P 2	S 1	0	0
2	B	1	Total 26	C 12	N 4	O 7	P 2	S 1	0	0
2	C	1	Total 26	C 12	N 4	O 7	P 2	S 1	0	0
2	D	1	Total 26	C 12	N 4	O 7	P 2	S 1	0	0

- Molecule 3 is MAGNESIUM ION (three-letter code: MG) (formula: Mg).

Mol	Chain	Residues	Atoms	ZeroOcc	AltConf
3	B	1	Total Mg 1 1	0	0
3	A	1	Total Mg 1 1	0	0
3	D	1	Total Mg 1 1	0	0
3	C	1	Total Mg 1 1	0	0

- Molecule 4 is CALCIUM ION (three-letter code: CA) (formula: Ca).

Mol	Chain	Residues	Atoms	ZeroOcc	AltConf
4	B	1	Total Ca 1 1	0	0

Continued on next page...

Continued from previous page...

Mol	Chain	Residues	Atoms		ZeroOcc	AltConf
4	A	1	Total 1	Ca 1	0	0
4	D	1	Total 1	Ca 1	0	0
4	C	1	Total 1	Ca 1	0	0

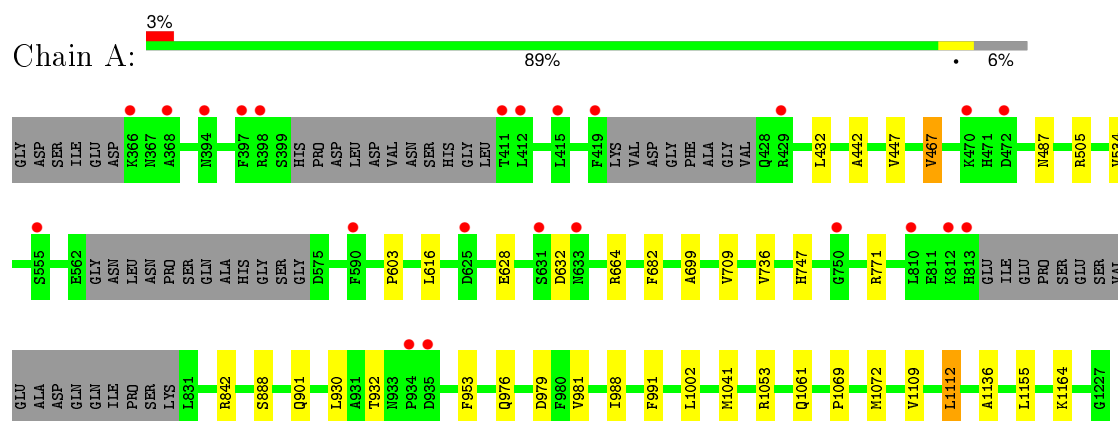
- Molecule 5 is water.

Mol	Chain	Residues	Atoms		ZeroOcc	AltConf
5	A	365	Total 365	O 365	0	0
5	B	275	Total 275	O 275	0	0
5	C	338	Total 338	O 338	0	0
5	D	243	Total 243	O 243	0	0

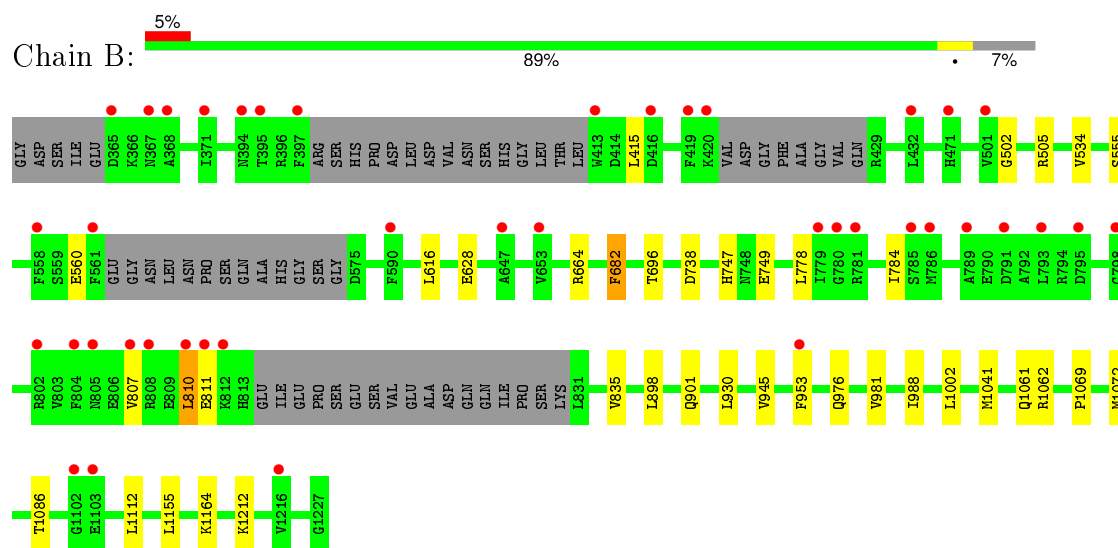
3 Residue-property plots [i](#)

These plots are drawn for all protein, RNA and DNA chains in the entry. The first graphic for a chain summarises the proportions of errors displayed in the second graphic. The second graphic shows the sequence view annotated by issues in geometry and electron density. Residues are color-coded according to the number of geometric quality criteria for which they contain at least one outlier: green = 0, yellow = 1, orange = 2 and red = 3 or more. A red dot above a residue indicates a poor fit to the electron density ($RSRZ > 2$). Stretches of 2 or more consecutive residues without any outlier are shown as a green connector. Residues present in the sample, but not in the model, are shown in grey.

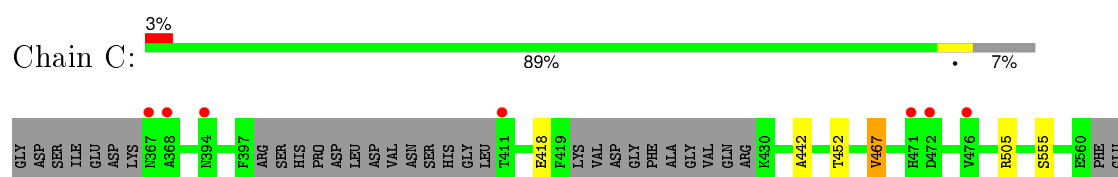
• Molecule 1: 2-OXOGLUTARATE DECARBOXYLASE

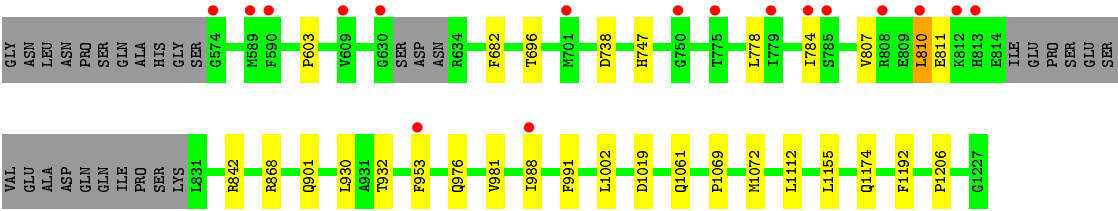


• Molecule 1: 2-OXOGLUTARATE DECARBOXYLASE

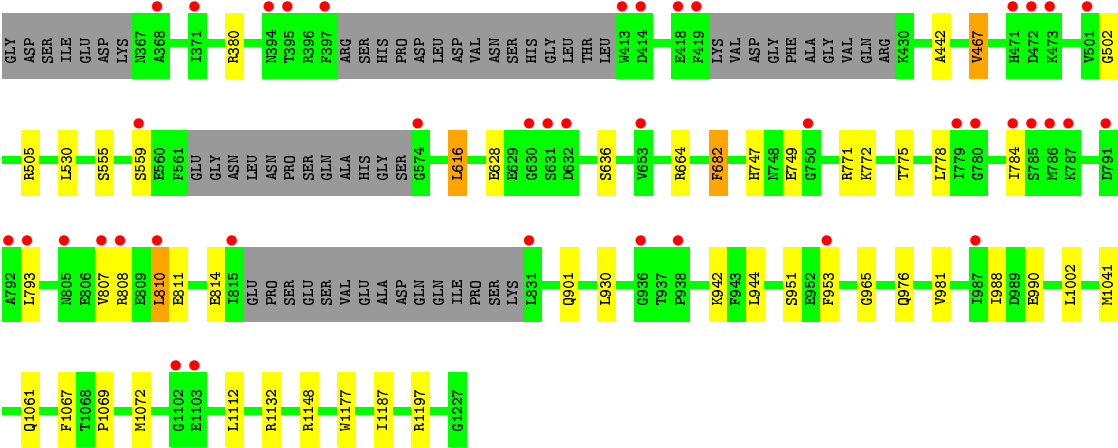
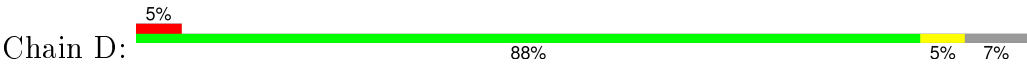


• Molecule 1: 2-OXOGLUTARATE DECARBOXYLASE





• Molecule 1: 2-OXOGLUTARATE DECARBOXYLASE



4 Data and refinement statistics

Property	Value	Source
Space group	P 1	Depositor
Cell constants a, b, c, α , β , γ	79.54Å 83.24Å 158.61Å 99.48° 99.06° 101.25°	Depositor
Resolution (Å)	39.20 – 1.96 49.53 – 1.96	Depositor EDS
% Data completeness (in resolution range)	95.2 (39.20-1.96) 88.1 (49.53-1.96)	Depositor EDS
R_{merge}	0.09	Depositor
R_{sym}	(Not available)	Depositor
$\langle I/\sigma(I) \rangle$ ¹	2.10 (at 1.97Å)	Xtriage
Refinement program	BUSTER 2.11.1	Depositor
R, R_{free}	0.188 , 0.211 0.207 , 0.234	Depositor DCC
R_{free} test set	13065 reflections (5.28%)	DCC
Wilson B-factor (Å ²)	21.8	Xtriage
Anisotropy	0.234	Xtriage
Bulk solvent k_{sol} (e/Å ³), B_{sol} (Å ²)	0.35 , 58.3	EDS
Estimated twinning fraction	0.034 for -k,-h,-l	Xtriage
L-test for twinning ²	$\langle L \rangle = 0.44$, $\langle L^2 \rangle = 0.26$	Xtriage
Outliers	0 of 260402 reflections	Xtriage
F_o, F_c correlation	0.93	EDS
Total number of atoms	26363	wwPDB-VP
Average B, all atoms (Å ²)	28.0	wwPDB-VP

Xtriage's analysis on translational NCS is as follows: *The largest off-origin peak in the Patterson function is 12.45% of the height of the origin peak. No significant pseudotranslation is detected.*

¹Intensities estimated from amplitudes.

²Theoretical values of $\langle |L| \rangle$, $\langle L^2 \rangle$ for acentric reflections are 0.5, 0.375 respectively for untwinned datasets, and 0.333, 0.2 for perfectly twinned datasets.

5 Model quality [i](#)

5.1 Standard geometry [i](#)

Bond lengths and bond angles in the following residue types are not validated in this section: CA, MG, TPP

The Z score for a bond length (or angle) is the number of standard deviations the observed value is removed from the expected value. A bond length (or angle) with $|Z| > 5$ is considered an outlier worth inspection. RMSZ is the root-mean-square of all Z scores of the bond lengths (or angles).

Mol	Chain	Bond lengths		Bond angles	
		RMSZ	$\# Z > 5$	RMSZ	$\# Z > 5$
1	A	0.51	0/6425	0.60	0/8715
1	B	0.50	0/6371	0.60	0/8645
1	C	0.51	0/6381	0.60	0/8650
1	D	0.50	0/6367	0.60	0/8640
All	All	0.50	0/25544	0.60	0/34650

There are no bond length outliers.

There are no bond angle outliers.

There are no chirality outliers.

There are no planarity outliers.

5.2 Too-close contacts [i](#)

In the following table, the Non-H and H(model) columns list the number of non-hydrogen atoms and hydrogen atoms in the chain respectively. The H(added) column lists the number of hydrogen atoms added and optimized by MolProbity. The Clashes column lists the number of clashes within the asymmetric unit, whereas Symm-Clashes lists symmetry related clashes.

Mol	Chain	Non-H	H(model)	H(added)	Clashes	Symm-Clashes
1	A	6295	0	6066	18	0
1	B	6241	0	6017	19	0
1	C	6256	0	6055	16	0
1	D	6238	0	6009	26	0
2	A	26	0	16	1	0
2	B	26	0	16	2	0
2	C	26	0	16	1	0
2	D	26	0	16	1	0
3	A	1	0	0	0	0

Continued on next page...

Continued from previous page...

Mol	Chain	Non-H	H(model)	H(added)	Clashes	Symm-Clashes
3	B	1	0	0	0	0
3	C	1	0	0	0	0
3	D	1	0	0	0	0
4	A	1	0	0	0	0
4	B	1	0	0	0	0
4	C	1	0	0	0	0
4	D	1	0	0	0	0
5	A	365	0	0	1	0
5	B	275	0	0	3	0
5	C	338	0	0	0	0
5	D	243	0	0	0	0
All	All	26363	0	24211	78	0

The all-atom clashscore is defined as the number of clashes found per 1000 atoms (including hydrogen atoms). The all-atom clashscore for this structure is 2.

All (78) close contacts within the same asymmetric unit are listed below, sorted by their clash magnitude.

Atom-1	Atom-2	Interatomic distance (Å)	Clash overlap (Å)
1:D:1041[B]:MET:HG2	1:D:1067:PHE:HB2	1.49	0.94
1:D:1041[B]:MET:CG	1:D:1067:PHE:HB2	2.16	0.74
1:C:505:ARG:HA	1:C:747:HIS:O	2.03	0.58
1:D:505:ARG:HA	1:D:747:HIS:O	2.03	0.57
1:D:771:ARG:HH12	1:D:793:LEU:HD23	1.71	0.55
1:D:559:SER:HA	1:D:814:GLU:OE2	2.07	0.55
1:B:1041[B]:MET:HE2	5:B:3246:HOH:O	2.06	0.54
1:D:1069:PRO:HB2	1:D:1072:MET:HB3	1.90	0.54
1:B:1002:LEU:HB3	1:B:1061:GLN:HB2	1.93	0.52
1:D:1002:LEU:HB3	1:D:1061:GLN:HB2	1.92	0.51
1:B:778:LEU:HB3	1:B:784:ILE:HG12	1.92	0.51
1:C:901:GLN:OE1	2:D:2001:TPP:H6'	2.12	0.50
1:D:616:LEU:HD13	1:D:965:GLY:HA2	1.92	0.50
1:D:772:LYS:HA	1:D:775:THR:HG22	1.94	0.50
1:B:1069:PRO:HB2	1:B:1072:MET:HB3	1.94	0.49
1:B:534:VAL:HG11	1:B:616:LEU:HD22	1.94	0.49
1:A:534:VAL:HG11	1:A:616:LEU:HD22	1.95	0.49
1:A:1069:PRO:HB2	1:A:1072:MET:HB3	1.94	0.48
1:B:807:VAL:O	1:B:811:GLU:HG3	2.13	0.48
1:D:628:GLU:HG2	1:D:664:ARG:O	2.13	0.48
1:A:981:VAL:HG22	1:A:988:ILE:HD11	1.96	0.48
1:B:505:ARG:HA	1:B:747:HIS:O	2.13	0.48

Continued on next page...

Continued from previous page...

Atom-1	Atom-2	Interatomic distance (Å)	Clash overlap (Å)
1:D:555:SER:HA	1:D:810:LEU:HG	1.95	0.47
1:A:901:GLN:OE1	2:B:2001:TPP:H6'	2.15	0.47
1:A:628:GLU:HG2	1:A:664:ARG:O	2.14	0.47
1:B:628:GLU:HG2	1:B:664:ARG:O	2.15	0.47
1:C:1155:LEU:HD11	1:C:1192:PHE:CZ	2.50	0.47
1:A:1002:LEU:HB3	1:A:1061:GLN:HB2	1.97	0.47
2:A:2001:TPP:H6'	1:B:901:GLN:OE1	2.15	0.46
1:C:981:VAL:HG22	1:C:988:ILE:HD11	1.97	0.45
1:D:442:ALA:HB1	1:D:467:VAL:HG13	2.00	0.45
1:A:447:VAL:HG22	1:A:709:VAL:HG23	1.99	0.45
1:A:442:ALA:HB1	1:A:467:VAL:HG13	1.98	0.44
1:D:616:LEU:HD13	1:D:965:GLY:CA	2.47	0.44
1:C:555:SER:HA	1:C:810:LEU:HG	1.98	0.44
2:C:2001:TPP:H6'	1:D:901:GLN:OE1	2.17	0.44
1:C:442:ALA:HB1	1:C:467:VAL:HG13	2.00	0.44
1:A:1109:VAL:HG21	1:A:1136:ALA:HB2	2.00	0.43
1:B:1155:LEU:HD13	1:B:1164:LYS:HE2	1.99	0.43
1:B:555:SER:HA	1:B:810:LEU:HG	2.00	0.43
1:A:487:ASN:OD1	1:A:771:ARG:HD2	2.18	0.43
1:B:502:GLY:HA2	1:B:749:GLU:CD	2.39	0.43
1:C:778:LEU:HB3	1:C:784:ILE:HG12	2.01	0.43
1:A:1155:LEU:HD13	1:A:1164:LYS:HE2	2.01	0.42
1:C:807:VAL:O	1:C:811:GLU:HG3	2.19	0.42
1:D:1069:PRO:CB	1:D:1072:MET:HB3	2.48	0.42
1:C:842:ARG:NH2	1:C:932:THR:O	2.53	0.42
2:B:2001:TPP:HM41	2:B:2001:TPP:H61	1.94	0.42
1:B:1062:ARG:NH2	5:B:3194:HOH:O	2.51	0.42
1:B:696:THR:HG21	1:B:738:ASP:HB2	2.01	0.42
1:D:807:VAL:O	1:D:811:GLU:HG3	2.18	0.42
1:D:502:GLY:HA2	1:D:749:GLU:CD	2.41	0.42
1:A:842:ARG:NH2	1:A:932:THR:O	2.53	0.42
1:B:898:LEU:O	1:B:945:VAL:HA	2.20	0.41
1:C:603:PRO:HD3	1:C:991:PHE:CZ	2.55	0.41
1:C:452:THR:O	1:D:380:ARG:NH2	2.53	0.41
1:D:530:LEU:HD22	1:D:636:SER:HA	2.01	0.41
1:C:1069:PRO:HB2	1:C:1072:MET:HB3	2.01	0.41
1:D:1148:ARG:NH1	1:D:1187:ILE:O	2.53	0.41
1:B:835:VAL:O	1:B:1086:THR:HA	2.20	0.41
1:D:1177:TRP:CD1	1:D:1197:ARG:HD3	2.55	0.41
1:B:1069:PRO:CB	1:B:1072:MET:HB3	2.51	0.41
1:A:603:PRO:HD3	1:A:991:PHE:CZ	2.56	0.41

Continued on next page...

Continued from previous page...

Atom-1	Atom-2	Interatomic distance (Å)	Clash overlap (Å)
1:D:749:GLU:CD	1:D:749:GLU:H	2.24	0.41
1:C:1019:ASP:OD1	1:D:990:GLU:OE1	2.39	0.41
1:A:505:ARG:HA	1:A:747:HIS:O	2.21	0.41
1:B:981:VAL:HG22	1:B:988:ILE:HD11	2.03	0.41
1:D:778:LEU:HB3	1:D:784:ILE:HG12	2.02	0.41
1:A:888:SER:OG	1:A:1053:ARG:HD2	2.20	0.41
1:D:942:LYS:HE2	1:D:944:LEU:HD21	2.03	0.41
1:A:699:ALA:CB	1:A:736:VAL:HG21	2.51	0.41
1:C:1002:LEU:HB3	1:C:1061:GLN:HB2	2.03	0.41
1:A:1041[A]:MET:HE2	5:A:3328:HOH:O	2.20	0.41
1:C:696:THR:HG21	1:C:738:ASP:HB2	2.03	0.40
1:D:981:VAL:HG22	1:D:988:ILE:HD11	2.03	0.40
1:B:1041[B]:MET:HE1	5:B:3261:HOH:O	2.21	0.40
1:A:1112:LEU:HD22	1:A:1136:ALA:HB3	2.03	0.40
1:C:1174:GLN:OE1	1:C:1206:PRO:HA	2.22	0.40

There are no symmetry-related clashes.

5.3 Torsion angles [i](#)

5.3.1 Protein backbone [i](#)

In the following table, the Percentiles column shows the percent Ramachandran outliers of the chain as a percentile score with respect to all X-ray entries followed by that with respect to entries of similar resolution.

The Analysed column shows the number of residues for which the backbone conformation was analysed, and the total number of residues.

Mol	Chain	Analysed	Favoured	Allowed	Outliers	Percentiles	
1	A	805/868 (93%)	790 (98%)	15 (2%)	0	100	100
1	B	801/868 (92%)	785 (98%)	14 (2%)	2 (0%)	52	43
1	C	794/868 (92%)	778 (98%)	16 (2%)	0	100	100
1	D	800/868 (92%)	783 (98%)	16 (2%)	1 (0%)	56	48
All	All	3200/3472 (92%)	3136 (98%)	61 (2%)	3 (0%)	56	48

All (3) Ramachandran outliers are listed below:

Mol	Chain	Res	Type
1	B	415	LEU
1	B	682	PHE
1	D	682	PHE

5.3.2 Protein sidechains ⓘ

In the following table, the Percentiles column shows the percent sidechain outliers of the chain as a percentile score with respect to all X-ray entries followed by that with respect to entries of similar resolution.

The Analysed column shows the number of residues for which the sidechain conformation was analysed, and the total number of residues.

Mol	Chain	Analysed	Rotameric	Outliers	Percentiles	
1	A	647/726 (89%)	638 (99%)	9 (1%)	74	70
1	B	637/726 (88%)	629 (99%)	8 (1%)	76	72
1	C	645/726 (89%)	636 (99%)	9 (1%)	74	70
1	D	640/726 (88%)	629 (98%)	11 (2%)	68	63
All	All	2569/2904 (88%)	2532 (99%)	37 (1%)	74	70

All (37) residues with a non-rotameric sidechain are listed below:

Mol	Chain	Res	Type
1	A	432	LEU
1	A	467	VAL
1	A	632	ASP
1	A	682	PHE
1	A	930	LEU
1	A	953	PHE
1	A	976	GLN
1	A	979	ASP
1	A	1112	LEU
1	B	560	GLU
1	B	682	PHE
1	B	810	LEU
1	B	930	LEU
1	B	953	PHE
1	B	976	GLN
1	B	1112	LEU
1	B	1212	LYS
1	C	418	GLU
1	C	467	VAL

Continued on next page...

Continued from previous page...

Mol	Chain	Res	Type
1	C	682	PHE
1	C	810	LEU
1	C	868	ARG
1	C	930	LEU
1	C	953	PHE
1	C	976	GLN
1	C	1112	LEU
1	D	467	VAL
1	D	616	LEU
1	D	682	PHE
1	D	808	ARG
1	D	810	LEU
1	D	930	LEU
1	D	951	SER
1	D	953	PHE
1	D	976	GLN
1	D	1112	LEU
1	D	1132	ARG

Some sidechains can be flipped to improve hydrogen bonding and reduce clashes. There are no such sidechains identified.

5.3.3 RNA [i](#)

There are no RNA molecules in this entry.

5.4 Non-standard residues in protein, DNA, RNA chains [i](#)

There are no non-standard protein/DNA/RNA residues in this entry.

5.5 Carbohydrates [i](#)

There are no carbohydrates in this entry.

5.6 Ligand geometry [i](#)

Of 12 ligands modelled in this entry, 8 are monoatomic - leaving 4 for Mogul analysis.

In the following table, the Counts columns list the number of bonds (or angles) for which Mogul statistics could be retrieved, the number of bonds (or angles) that are observed in the model and

the number of bonds (or angles) that are defined in the chemical component dictionary. The Link column lists molecule types, if any, to which the group is linked. The Z score for a bond length (or angle) is the number of standard deviations the observed value is removed from the expected value. A bond length (or angle) with $|Z| > 2$ is considered an outlier worth inspection. RMSZ is the root-mean-square of all Z scores of the bond lengths (or angles).

Mol	Type	Chain	Res	Link	Bond lengths			Bond angles		
					Counts	RMSZ	# Z > 2	Counts	RMSZ	# Z > 2
2	TPP	A	2001	3	20,27,27	1.70	2 (10%)	31,40,40	1.74	6 (19%)
2	TPP	B	2001	3	20,27,27	1.85	2 (10%)	31,40,40	1.73	7 (22%)
2	TPP	C	2001	3	20,27,27	1.75	1 (5%)	31,40,40	1.76	7 (22%)
2	TPP	D	2001	3	20,27,27	1.88	2 (10%)	31,40,40	1.76	7 (22%)

In the following table, the Chirals column lists the number of chiral outliers, the number of chiral centers analysed, the number of these observed in the model and the number defined in the chemical component dictionary. Similar counts are reported in the Torsion and Rings columns. '-' means no outliers of that kind were identified.

Mol	Type	Chain	Res	Link	Chirals	Torsions	Rings
2	TPP	A	2001	3	-	0/16/17/17	0/2/2/2
2	TPP	B	2001	3	-	0/16/17/17	0/2/2/2
2	TPP	C	2001	3	-	0/16/17/17	0/2/2/2
2	TPP	D	2001	3	-	0/16/17/17	0/2/2/2

All (7) bond length outliers are listed below:

Mol	Chain	Res	Type	Atoms	Z	Observed(Å)	Ideal(Å)
2	B	2001	TPP	C4-N3	-7.11	1.33	1.39
2	D	2001	TPP	C4-N3	-6.86	1.33	1.39
2	C	2001	TPP	C4-N3	-6.51	1.34	1.39
2	A	2001	TPP	C4-N3	-6.33	1.34	1.39
2	B	2001	TPP	C4'-N4'	2.00	1.39	1.34
2	A	2001	TPP	PB-O1B	2.05	1.57	1.51
2	D	2001	TPP	C4'-N4'	2.72	1.40	1.34

All (27) bond angle outliers are listed below:

Mol	Chain	Res	Type	Atoms	Z	Observed(°)	Ideal(°)
2	D	2001	TPP	CM4-C4-C5	-4.88	117.92	128.90
2	A	2001	TPP	CM4-C4-C5	-4.86	117.97	128.90
2	C	2001	TPP	CM4-C4-C5	-4.75	118.22	128.90
2	B	2001	TPP	CM4-C4-C5	-4.62	118.52	128.90
2	B	2001	TPP	N1'-C2'-N3'	-2.84	120.35	125.60

Continued on next page...

Continued from previous page...

Mol	Chain	Res	Type	Atoms	Z	Observed(°)	Ideal(°)
2	D	2001	TPP	C5'-C6'-N1'	-2.52	119.48	123.86
2	B	2001	TPP	C5'-C6'-N1'	-2.51	119.50	123.86
2	C	2001	TPP	C5'-C6'-N1'	-2.47	119.58	123.86
2	D	2001	TPP	N1'-C2'-N3'	-2.43	121.11	125.60
2	C	2001	TPP	N1'-C2'-N3'	-2.42	121.12	125.60
2	A	2001	TPP	N1'-C2'-N3'	-2.27	121.39	125.60
2	B	2001	TPP	C6-C5-C4	2.14	129.48	127.56
2	C	2001	TPP	CM4-C4-N3	2.32	125.69	122.59
2	B	2001	TPP	CM4-C4-N3	2.42	125.81	122.59
2	A	2001	TPP	CM4-C4-N3	2.43	125.83	122.59
2	D	2001	TPP	CM4-C4-N3	2.44	125.84	122.59
2	A	2001	TPP	C6'-N1'-C2'	2.72	120.53	115.77
2	D	2001	TPP	C6-C5-C4	2.74	130.02	127.56
2	D	2001	TPP	C6'-N1'-C2'	3.06	121.12	115.77
2	B	2001	TPP	C6'-N1'-C2'	3.28	121.50	115.77
2	C	2001	TPP	C6'-N1'-C2'	3.46	121.81	115.77
2	B	2001	TPP	C5-C4-N3	3.47	115.33	107.69
2	C	2001	TPP	C6-C5-C4	3.56	130.75	127.56
2	D	2001	TPP	C5-C4-N3	3.66	115.75	107.69
2	C	2001	TPP	C5-C4-N3	3.68	115.78	107.69
2	A	2001	TPP	C5-C4-N3	3.71	115.86	107.69
2	A	2001	TPP	C6-C5-C4	4.37	131.48	127.56

There are no chirality outliers.

There are no torsion outliers.

There are no ring outliers.

4 monomers are involved in 5 short contacts:

Mol	Chain	Res	Type	Clashes	Symm-Clashes
2	A	2001	TPP	1	0
2	B	2001	TPP	2	0
2	C	2001	TPP	1	0
2	D	2001	TPP	1	0

5.7 Other polymers

There are no such residues in this entry.

5.8 Polymer linkage issues ⓘ

There are no chain breaks in this entry.

6 Fit of model and data ⓘ

6.1 Protein, DNA and RNA chains ⓘ

In the following table, the column labelled ‘#RSRZ> 2’ contains the number (and percentage) of RSRZ outliers, followed by percent RSRZ outliers for the chain as percentile scores relative to all X-ray entries and entries of similar resolution. The OWAB column contains the minimum, median, 95th percentile and maximum values of the occupancy-weighted average B-factor per residue. The column labelled ‘Q< 0.9’ lists the number of (and percentage) of residues with an average occupancy less than 0.9.

Mol	Chain	Analysed	<RSRZ>	#RSRZ>2			OWAB(Å ²)	Q<0.9
1	A	814/868 (93%)	-0.00	23 (2%)	56	66	11, 24, 52, 90	0
1	B	810/868 (93%)	0.15	41 (5%)	32	43	12, 26, 57, 106	0
1	C	806/868 (92%)	0.04	24 (2%)	54	64	11, 24, 55, 76	0
1	D	809/868 (93%)	0.17	41 (5%)	32	43	13, 27, 59, 92	0
All	All	3239/3472 (93%)	0.09	129 (3%)	42	53	11, 25, 56, 106	0

All (129) RSRZ outliers are listed below:

Mol	Chain	Res	Type	RSRZ
1	D	394	ASN	6.5
1	B	394	ASN	6.0
1	B	419	PHE	5.6
1	C	368	ALA	5.4
1	C	779	ILE	5.0
1	B	786	MET	4.8
1	D	395	THR	4.8
1	D	419	PHE	4.7
1	D	810	LEU	4.6
1	D	371	ILE	4.6
1	B	395	THR	4.5
1	B	785	SER	4.4
1	C	590	PHE	4.3
1	A	429	ARG	4.2
1	B	779	ILE	4.2
1	C	785	SER	4.2
1	B	807	VAL	4.0
1	D	1103	GLU	4.0
1	B	397	PHE	4.0
1	D	785	SER	3.9
1	D	780	GLY	3.9

Continued on next page...

Continued from previous page...

Mol	Chain	Res	Type	RSRZ
1	B	789	ALA	3.7
1	C	630	GLY	3.6
1	A	472	ASP	3.5
1	D	368	ALA	3.5
1	C	750	GLY	3.5
1	B	368	ALA	3.4
1	D	574	GLY	3.4
1	C	472	ASP	3.4
1	B	420	LYS	3.4
1	D	953	PHE	3.3
1	B	413	TRP	3.3
1	D	815	ILE	3.3
1	C	574	GLY	3.2
1	C	471	HIS	3.2
1	D	471	HIS	3.2
1	A	810	LEU	3.2
1	B	1102	GLY	3.1
1	D	936	GLY	3.1
1	B	561	PHE	3.1
1	B	795	ASP	3.1
1	B	1103	GLU	3.1
1	D	472	ASP	3.1
1	A	812	LYS	3.1
1	A	398	ARG	3.0
1	D	779	ILE	3.0
1	D	784	ILE	3.0
1	D	559	SER	3.0
1	D	473	LYS	3.0
1	B	371	ILE	2.9
1	B	471	HIS	2.9
1	C	367	ASN	2.9
1	D	413	TRP	2.9
1	A	935	ASP	2.8
1	D	632	ASP	2.8
1	A	366	LYS	2.7
1	D	807	VAL	2.7
1	B	812	LYS	2.7
1	C	775	THR	2.7
1	D	630	GLY	2.7
1	B	780	GLY	2.6
1	C	476	VAL	2.6
1	D	791	ASP	2.6

Continued on next page...

Continued from previous page...

Mol	Chain	Res	Type	RSRZ
1	C	808	ARG	2.6
1	A	411	THR	2.6
1	B	367	ASN	2.5
1	A	397	PHE	2.5
1	C	589	MET	2.5
1	A	394	ASN	2.5
1	D	793	LEU	2.5
1	B	653	VAL	2.5
1	C	394	ASN	2.5
1	A	368	ALA	2.5
1	B	432	LEU	2.5
1	D	1102	GLY	2.5
1	A	412	LEU	2.5
1	B	810	LEU	2.5
1	B	791	ASP	2.4
1	D	938	PRO	2.4
1	B	953	PHE	2.4
1	B	501	VAL	2.4
1	D	501	VAL	2.4
1	B	802	ARG	2.4
1	A	631	SER	2.4
1	C	784	ILE	2.3
1	A	625	ASP	2.3
1	D	418	GLU	2.3
1	D	805	ASN	2.3
1	A	750	GLY	2.3
1	B	793	LEU	2.3
1	A	555	SER	2.3
1	A	419	PHE	2.3
1	C	953	PHE	2.3
1	A	415	LEU	2.3
1	D	653	VAL	2.3
1	D	750	GLY	2.2
1	B	1216	VAL	2.2
1	C	609	VAL	2.2
1	A	590	PHE	2.2
1	A	470	LYS	2.2
1	D	792	ALA	2.2
1	B	804	PHE	2.2
1	D	987	ILE	2.2
1	A	633	ASN	2.2
1	B	811	GLU	2.2

Continued on next page...

Continued from previous page...

Mol	Chain	Res	Type	RSRZ
1	C	988	ILE	2.2
1	C	812	LYS	2.1
1	C	411	THR	2.1
1	C	810	LEU	2.1
1	D	786	MET	2.1
1	A	934	PRO	2.1
1	B	590	PHE	2.1
1	D	831	LEU	2.1
1	D	787	LYS	2.1
1	B	365	ASP	2.1
1	B	805	ASN	2.1
1	D	414	ASP	2.1
1	D	397	PHE	2.1
1	B	808	ARG	2.1
1	A	813	HIS	2.1
1	C	813	HIS	2.1
1	B	647	ALA	2.1
1	B	781	ARG	2.1
1	C	701	MET	2.1
1	B	416	ASP	2.1
1	D	808	ARG	2.0
1	D	631	SER	2.0
1	B	558	PHE	2.0
1	B	798	GLY	2.0

6.2 Non-standard residues in protein, DNA, RNA chains [i](#)

There are no non-standard protein/DNA/RNA residues in this entry.

6.3 Carbohydrates [i](#)

There are no carbohydrates in this entry.

6.4 Ligands [i](#)

In the following table, the Atoms column lists the number of modelled atoms in the group and the number defined in the chemical component dictionary. LLDF column lists the quality of electron density of the group with respect to its neighbouring residues in protein, DNA or RNA chains. The B-factors column lists the minimum, median, 95th percentile and maximum values of B factors of atoms in the group. The column labelled 'Q < 0.9' lists the number of atoms with occupancy less than 0.9.

Mol	Type	Chain	Res	Atoms	RSCC	RSR	LLDF	B-factors(\AA^2)	Q<0.9
3	MG	D	2002	1/1	0.99	0.13	2.44	12,12,12,12	0
3	MG	B	2002	1/1	0.97	0.13	0.63	11,11,11,11	0
3	MG	A	2002	1/1	0.98	0.11	0.38	10,10,10,10	0
3	MG	C	2002	1/1	1.00	0.13	0.36	10,10,10,10	0
2	TPP	C	2001	26/26	0.98	0.14	0.22	10,16,20,23	0
2	TPP	D	2001	26/26	0.98	0.12	-0.08	12,16,20,23	0
2	TPP	A	2001	26/26	0.98	0.12	-0.17	13,18,20,23	0
2	TPP	B	2001	26/26	0.97	0.13	-0.23	10,15,19,22	0
4	CA	B	2003	1/1	0.99	0.05	-2.11	23,23,23,23	0
4	CA	D	2003	1/1	0.99	0.04	-2.40	25,25,25,25	0
4	CA	C	2003	1/1	1.00	0.04	-3.76	20,20,20,20	0
4	CA	A	2003	1/1	1.00	0.05	-5.56	20,20,20,20	0

6.5 Other polymers [i](#)

There are no such residues in this entry.