



Full wwPDB X-ray Structure Validation Report ⓘ

Feb 19, 2016 – 07:21 PM GMT

PDB ID : 1YKI
Title : The structure of E. coli nitroreductase bound with the antibiotic nitrofurazone
Authors : Race, P.R.; Lovering, A.L.; Green, R.M.; Ossor, A.; White, S.A.; Searle, P.F.;
Wrighton, C.J.; Hyde, E.I.
Deposited on : 2005-01-18
Resolution : 1.70 Å(reported)

This is a Full wwPDB X-ray Structure Validation Report for a publicly released PDB entry.
We welcome your comments at validation@mail.wwpdb.org
A user guide is available at
<http://wwpdb.org/validation/2016/XrayValidationReportHelp>
with specific help available everywhere you see the ⓘ symbol.

The following versions of software and data (see [references ⓘ](#)) were used in the production of this report:

MolProbity : 4.02b-467
Mogul : 1.7.1 (RC1), CSD as537be (2016)
Xtriage (Phenix) : 1.9-1692
EDS : rb-20026982
Percentile statistics : 20151230.v01 (using entries in the PDB archive December 30th 2015)
Refmac : 5.8.0135
CCP4 : 6.5.0
Ideal geometry (proteins) : Engh & Huber (2001)
Ideal geometry (DNA, RNA) : Parkinson et al. (1996)
Validation Pipeline (wwPDB-VP) : rb-20026982

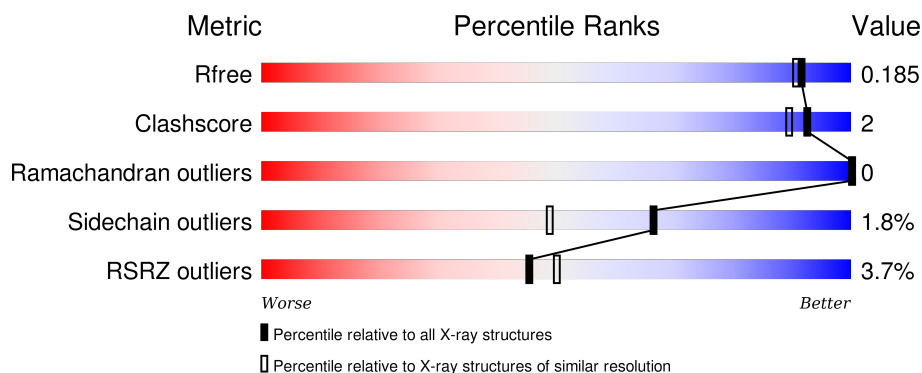
1 Overall quality at a glance

The following experimental techniques were used to determine the structure:

X-RAY DIFFRACTION

The reported resolution of this entry is 1.70 Å.

Percentile scores (ranging between 0-100) for global validation metrics of the entry are shown in the following graphic. The table shows the number of entries on which the scores are based.



Metric	Whole archive (#Entries)	Similar resolution (#Entries, resolution range(Å))
R_{free}	91344	3190 (1.70-1.70)
Clashscore	102246	3585 (1.70-1.70)
Ramachandran outliers	100387	3527 (1.70-1.70)
Sidechain outliers	100360	3527 (1.70-1.70)
RSRZ outliers	91569	3200 (1.70-1.70)

The table below summarises the geometric issues observed across the polymeric chains and their fit to the electron density. The red, orange, yellow and green segments on the lower bar indicate the fraction of residues that contain outliers for ≥ 3 , 2, 1 and 0 types of geometric quality criteria. A grey segment represents the fraction of residues that are not modelled. The numeric value for each fraction is indicated below the corresponding segment, with a dot representing fractions $\leq 5\%$. The upper red bar (where present) indicates the fraction of residues that have poor fit to the electron density. The numeric value is given above the bar.

Mol	Chain	Length	Quality of chain
1	A	217	<div> <div>5%</div> <div>90%</div> <div>8%</div> </div>
1	B	217	<div> <div>4%</div> <div>93%</div> <div>7%</div> </div>
1	C	217	<div> <div>2%</div> <div>94%</div> <div>6%</div> </div>
1	D	217	<div> <div>4%</div> <div>91%</div> <div>8%</div> </div>

The following table lists non-polymeric compounds, carbohydrate monomers and non-standard

residues in protein, DNA, RNA chains that are outliers for geometric or electron-density-fit criteria:

Mol	Type	Chain	Res	Chirality	Geometry	Clashes	Electron density
4	CIT	C	4220	-	-	-	X
5	DMS	B	1225	-	-	-	X
5	DMS	C	1223	-	-	-	X

2 Entry composition [i](#)

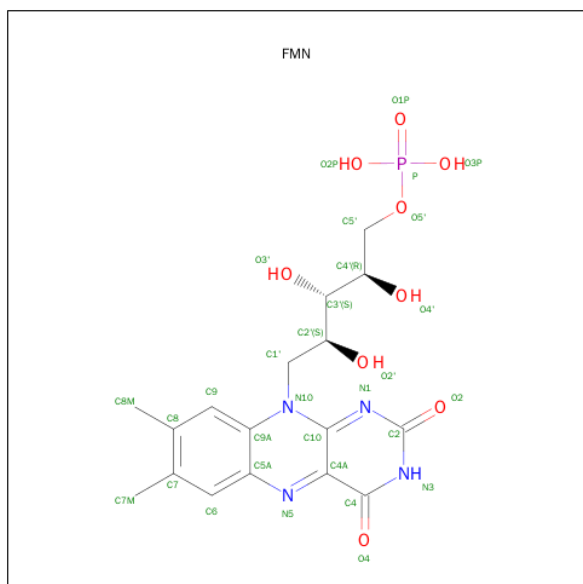
There are 6 unique types of molecules in this entry. The entry contains 7831 atoms, of which 0 are hydrogens and 0 are deuteriums.

In the tables below, the ZeroOcc column contains the number of atoms modelled with zero occupancy, the AltConf column contains the number of residues with at least one atom in alternate conformation and the Trace column contains the number of residues modelled with at most 2 atoms.

- Molecule 1 is a protein called Oxygen-insensitive NAD(P)H nitroreductase.

Mol	Chain	Residues	Atoms					ZeroOcc	AltConf	Trace
1	A	216	Total	C	N	O	S	0	0	0
			1677	1065	287	320	5			
1	B	217	Total	C	N	O	S	0	0	0
			1685	1070	288	321	6			
1	C	216	Total	C	N	O	S	0	0	0
			1677	1065	287	320	5			
1	D	217	Total	C	N	O	S	0	0	0
			1685	1070	288	321	6			

- Molecule 2 is FLAVIN MONONUCLEOTIDE (three-letter code: FMN) (formula: $C_{17}H_{21}N_4O_9P$).



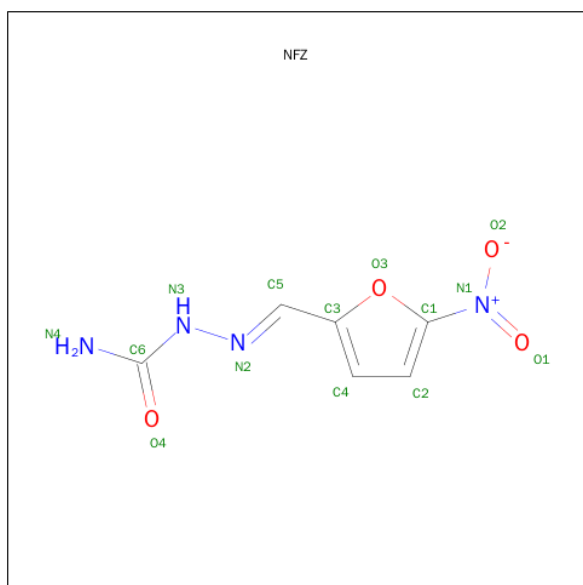
Mol	Chain	Residues	Atoms					ZeroOcc	AltConf
2	A	1	Total	C	N	O	P	0	0
			31	17	4	9	1		
2	B	1	Total	C	N	O	P	0	0
			31	17	4	9	1		

Continued on next page...

Continued from previous page...

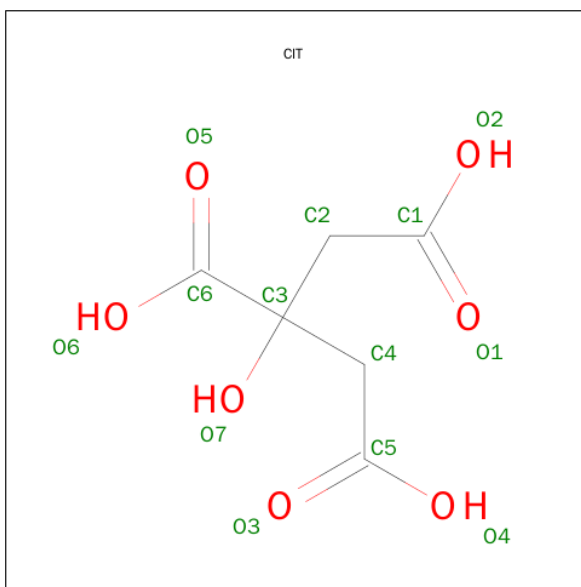
Mol	Chain	Residues	Atoms					ZeroOcc	AltConf
2	C	1	Total	C	N	O	P	0	0
			31	17	4	9	1		
2	D	1	Total	C	N	O	P	0	0
			31	17	4	9	1		

- Molecule 3 is NITROFURAZONE (three-letter code: NFZ) (formula: C₆H₆N₄O₄).



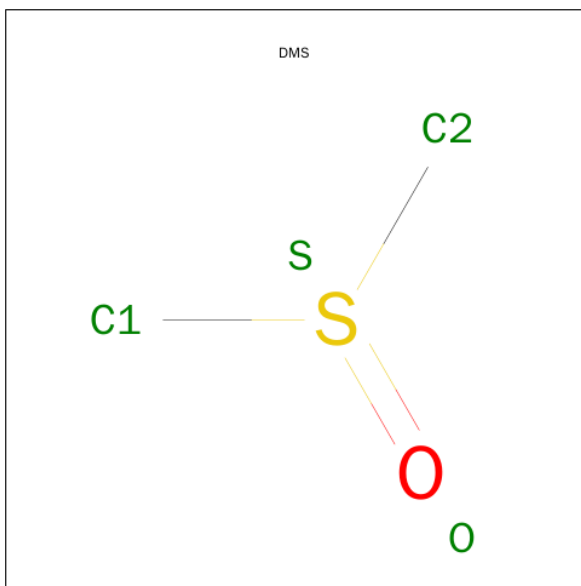
Mol	Chain	Residues	Atoms				ZeroOcc	AltConf
3	A	1	Total	C	N	O	0	0
			14	6	4	4		
3	B	1	Total	C	N	O	0	0
			14	6	4	4		
3	C	1	Total	C	N	O	0	0
			14	6	4	4		
3	D	1	Total	C	N	O	0	0
			14	6	4	4		

- Molecule 4 is CITRIC ACID (three-letter code: CIT) (formula: C₆H₈O₇).



Mol	Chain	Residues	Atoms			ZeroOcc	AltConf
4	C	1	Total	C	O	0	0
			13	6	7		

- Molecule 5 is DIMETHYL SULFOXIDE (three-letter code: DMS) (formula: C_2H_6OS).



Mol	Chain	Residues	Atoms				ZeroOcc	AltConf
5	C	1	Total	C	O	S	0	0
			4	2	1	1		
5	C	1	Total	C	O	S	0	0
			4	2	1	1		
5	B	1	Total	C	O	S	0	0
			4	2	1	1		

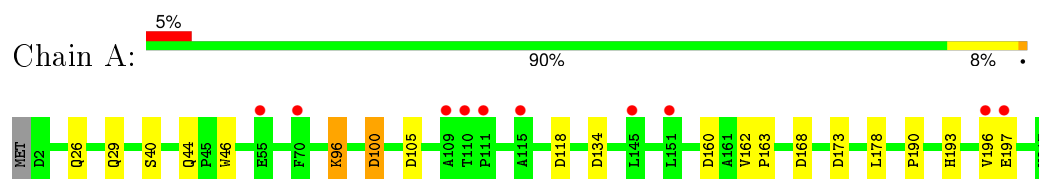
- Molecule 6 is water.

Mol	Chain	Residues	Atoms		ZeroOcc	AltConf
6	A	219	Total 219	O 219	0	0
6	B	223	Total 223	O 223	0	0
6	C	232	Total 232	O 232	0	0
6	D	228	Total 228	O 228	0	0

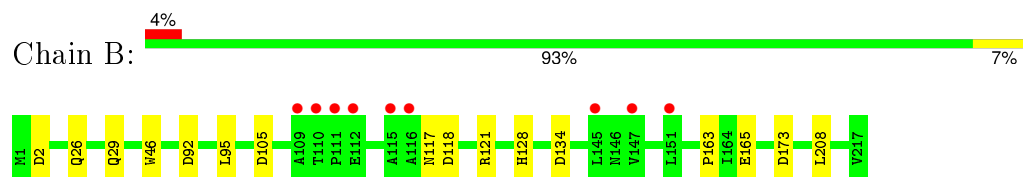
3 Residue-property plots [i](#)

These plots are drawn for all protein, RNA and DNA chains in the entry. The first graphic for a chain summarises the proportions of errors displayed in the second graphic. The second graphic shows the sequence view annotated by issues in geometry and electron density. Residues are color-coded according to the number of geometric quality criteria for which they contain at least one outlier: green = 0, yellow = 1, orange = 2 and red = 3 or more. A red dot above a residue indicates a poor fit to the electron density ($RSRZ > 2$). Stretches of 2 or more consecutive residues without any outlier are shown as a green connector. Residues present in the sample, but not in the model, are shown in grey.

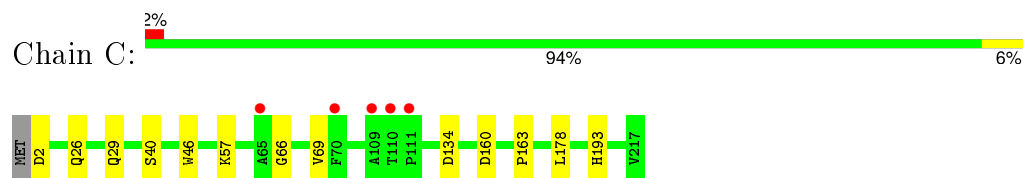
- Molecule 1: Oxygen-insensitive NAD(P)H nitroreductase



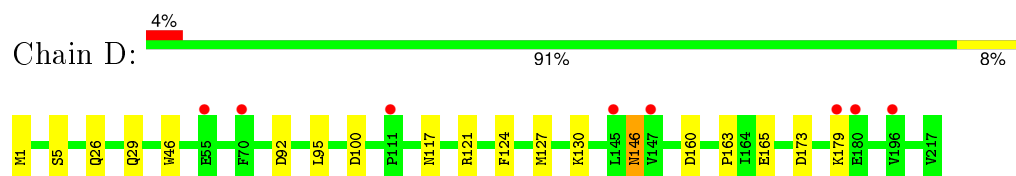
- Molecule 1: Oxygen-insensitive NAD(P)H nitroreductase



- Molecule 1: Oxygen-insensitive NAD(P)H nitroreductase



- Molecule 1: Oxygen-insensitive NAD(P)H nitroreductase



4 Data and refinement statistics

Property	Value	Source
Space group	P 1 21 1	Depositor
Cell constants a, b, c, α , β , γ	70.08 Å 56.47 Å 116.08 Å 90.00° 103.10° 90.00°	Depositor
Resolution (Å)	40.00 – 1.70 39.95 – 1.70	Depositor EDS
% Data completeness (in resolution range)	99.6 (40.00-1.70) 99.6 (39.95-1.70)	Depositor EDS
R_{merge}	(Not available)	Depositor
R_{sym}	0.06	Depositor
$\langle I/\sigma(I) \rangle$ ¹	6.09 (at 1.70 Å)	Xtriage
Refinement program	REFMAC 5.1.24	Depositor
R, R_{free}	0.144 , 0.167 0.167 , 0.185	Depositor DCC
R_{free} test set	4856 reflections (5.26%)	DCC
Wilson B-factor (Å ²)	14.7	Xtriage
Anisotropy	0.251	Xtriage
Bulk solvent k_{sol} (e/Å ³), B_{sol} (Å ²)	0.42 , 65.7	EDS
Estimated twinning fraction	No twinning to report.	Xtriage
L-test for twinning ²	$\langle L \rangle = 0.47$, $\langle L^2 \rangle = 0.30$	Xtriage
Outliers	0 of 97111 reflections	Xtriage
F_o, F_c correlation	0.95	EDS
Total number of atoms	7831	wwPDB-VP
Average B, all atoms (Å ²)	13.0	wwPDB-VP

Xtriage's analysis on translational NCS is as follows: *The largest off-origin peak in the Patterson function is 5.92% of the height of the origin peak. No significant pseudotranslation is detected.*

¹Intensities estimated from amplitudes.

²Theoretical values of $\langle |L| \rangle$, $\langle L^2 \rangle$ for acentric reflections are 0.5, 0.375 respectively for untwinned datasets, and 0.333, 0.2 for perfectly twinned datasets.

5 Model quality

5.1 Standard geometry

Bond lengths and bond angles in the following residue types are not validated in this section: FMN, DMS, NFZ, CIT

The Z score for a bond length (or angle) is the number of standard deviations the observed value is removed from the expected value. A bond length (or angle) with $|Z| > 5$ is considered an outlier worth inspection. RMSZ is the root-mean-square of all Z scores of the bond lengths (or angles).

Mol	Chain	Bond lengths		Bond angles	
		RMSZ	$\# Z > 5$	RMSZ	$\# Z > 5$
1	A	0.38	0/1712	0.71	7/2318 (0.3%)
1	B	0.39	0/1720	0.71	6/2328 (0.3%)
1	C	0.39	0/1712	0.70	3/2318 (0.1%)
1	D	0.38	0/1720	0.70	4/2328 (0.2%)
All	All	0.39	0/6864	0.71	20/9292 (0.2%)

There are no bond length outliers.

All (20) bond angle outliers are listed below:

Mol	Chain	Res	Type	Atoms	Z	Observed(°)	Ideal(°)
1	C	2	ASP	CB-CG-OD2	8.29	125.76	118.30
1	A	160	ASP	CB-CG-OD2	6.16	123.84	118.30
1	A	168	ASP	CB-CG-OD2	6.05	123.75	118.30
1	B	92	ASP	CB-CG-OD2	5.98	123.69	118.30
1	A	100	ASP	CB-CG-OD2	5.88	123.59	118.30
1	D	92	ASP	CB-CG-OD2	5.61	123.35	118.30
1	B	118	ASP	CB-CG-OD2	5.56	123.30	118.30
1	B	134	ASP	CB-CG-OD2	5.55	123.30	118.30
1	C	160	ASP	CB-CG-OD2	5.44	123.19	118.30
1	B	2	ASP	CB-CG-OD2	5.43	123.19	118.30
1	C	134	ASP	CB-CG-OD2	5.40	123.16	118.30
1	D	160	ASP	CB-CG-OD2	5.27	123.04	118.30
1	B	105	ASP	CB-CG-OD2	5.16	122.94	118.30
1	A	173	ASP	CB-CG-OD2	5.12	122.91	118.30
1	A	118	ASP	CB-CG-OD2	5.09	122.88	118.30
1	A	134	ASP	CB-CG-OD2	5.08	122.87	118.30
1	D	173	ASP	CB-CG-OD2	5.05	122.85	118.30
1	D	100	ASP	CB-CG-OD2	5.04	122.83	118.30
1	B	173	ASP	CB-CG-OD2	5.01	122.81	118.30
1	A	105	ASP	CB-CG-OD2	5.01	122.81	118.30

There are no chirality outliers.

There are no planarity outliers.

5.2 Too-close contacts

In the following table, the Non-H and H(model) columns list the number of non-hydrogen atoms and hydrogen atoms in the chain respectively. The H(added) column lists the number of hydrogen atoms added and optimized by MolProbity. The Clashes column lists the number of clashes within the asymmetric unit, whereas Symm-Clashes lists symmetry related clashes.

Mol	Chain	Non-H	H(model)	H(added)	Clashes	Symm-Clashes
1	A	1677	0	1661	10	0
1	B	1685	0	1673	9	0
1	C	1677	0	1661	6	0
1	D	1685	0	1673	8	0
2	A	31	0	19	1	0
2	B	31	0	19	1	0
2	C	31	0	19	1	0
2	D	31	0	19	1	0
3	A	14	0	6	0	0
3	B	14	0	6	0	0
3	C	14	0	6	0	0
3	D	14	0	6	0	0
4	C	13	0	5	0	0
5	B	4	0	6	0	0
5	C	8	0	12	0	0
6	A	219	0	0	2	1
6	B	223	0	0	0	1
6	C	232	0	0	2	0
6	D	228	0	0	1	0
All	All	7831	0	6791	28	1

The all-atom clashscore is defined as the number of clashes found per 1000 atoms (including hydrogen atoms). The all-atom clashscore for this structure is 2.

All (28) close contacts within the same asymmetric unit are listed below, sorted by their clash magnitude.

Atom-1	Atom-2	Interatomic distance (Å)	Clash overlap (Å)
1:A:44:GLN:HE22	1:B:208:LEU:H	1.17	0.85
1:C:40:SER:OG	1:D:165:GLU:OE2	2.15	0.61
6:A:1405:HOH:O	1:B:128:HIS:HE1	1.85	0.59
1:C:66:GLY:O	1:C:69:VAL:HG23	2.02	0.59

Continued on next page...

Continued from previous page...

Atom-1	Atom-2	Interatomic distance (Å)	Clash overlap (Å)
1:D:124:PHE:HB3	6:D:4381:HOH:O	2.03	0.58
1:C:57:LYS:NZ	6:C:4352:HOH:O	2.00	0.58
1:A:44:GLN:NE2	1:B:208:LEU:H	1.96	0.57
1:B:26:GLN:HA	1:B:29:GLN:HE21	1.69	0.56
1:C:193:HIS:HE1	6:C:4267:HOH:O	1.88	0.56
1:A:44:GLN:HE22	1:B:208:LEU:N	1.95	0.54
1:A:193:HIS:HE1	6:A:1283:HOH:O	1.90	0.54
1:A:26:GLN:HA	1:A:29:GLN:HE21	1.73	0.53
1:B:163:PRO:HG2	2:B:2218:FMN:C9	2.40	0.52
1:C:26:GLN:HA	1:C:29:GLN:HE21	1.75	0.52
1:A:163:PRO:HG2	2:A:1218:FMN:C9	2.41	0.51
1:D:117:ASN:HD21	1:D:121:ARG:HH22	1.58	0.51
1:D:163:PRO:HG2	2:D:4218:FMN:C9	2.41	0.51
1:C:163:PRO:HG2	2:C:3218:FMN:C9	2.41	0.50
1:B:117:ASN:HD21	1:B:121:ARG:HH22	1.60	0.50
1:A:40:SER:OG	1:B:165:GLU:OE1	2.25	0.49
1:B:117:ASN:ND2	1:B:121:ARG:HH12	2.13	0.46
1:D:117:ASN:ND2	1:D:121:ARG:HH12	2.15	0.45
1:D:26:GLN:HA	1:D:29:GLN:HE21	1.83	0.44
1:A:96:LYS:HD2	1:A:100:ASP:OD1	2.19	0.42
1:A:162:VAL:O	1:A:190:PRO:HD2	2.20	0.42
1:D:1:MET:HB2	1:D:5:SER:HB2	2.03	0.41
1:D:146:ASN:HD22	1:D:146:ASN:C	2.24	0.41
1:A:196:VAL:HG23	1:A:197:GLU:OE1	2.21	0.40

All (1) symmetry-related close contacts are listed below. The label for Atom-2 includes the symmetry operator and encoded unit-cell translations to be applied.

Atom-1	Atom-2	Interatomic distance (Å)	Clash overlap (Å)
6:A:1304:HOH:O	6:B:2425:HOH:O[2_556]	1.91	0.29

5.3 Torsion angles ⓘ

5.3.1 Protein backbone ⓘ

In the following table, the Percentiles column shows the percent Ramachandran outliers of the chain as a percentile score with respect to all X-ray entries followed by that with respect to entries of similar resolution.

The Analysed column shows the number of residues for which the backbone conformation was

analysed, and the total number of residues.

Mol	Chain	Analysed	Favoured	Allowed	Outliers	Percentiles	
1	A	214/217 (99%)	213 (100%)	1 (0%)	0	100	100
1	B	215/217 (99%)	214 (100%)	1 (0%)	0	100	100
1	C	214/217 (99%)	214 (100%)	0	0	100	100
1	D	215/217 (99%)	214 (100%)	1 (0%)	0	100	100
All	All	858/868 (99%)	855 (100%)	3 (0%)	0	100	100

There are no Ramachandran outliers to report.

5.3.2 Protein sidechains ⓘ

In the following table, the Percentiles column shows the percent sidechain outliers of the chain as a percentile score with respect to all X-ray entries followed by that with respect to entries of similar resolution.

The Analysed column shows the number of residues for which the sidechain conformation was analysed, and the total number of residues.

Mol	Chain	Analysed	Rotameric	Outliers	Percentiles	
1	A	178/179 (99%)	175 (98%)	3 (2%)	68	51
1	B	179/179 (100%)	177 (99%)	2 (1%)	80	69
1	C	178/179 (99%)	176 (99%)	2 (1%)	80	69
1	D	179/179 (100%)	173 (97%)	6 (3%)	44	21
All	All	714/716 (100%)	701 (98%)	13 (2%)	66	49

All (13) residues with a non-rotameric sidechain are listed below:

Mol	Chain	Res	Type
1	A	46	TRP
1	A	96	LYS
1	A	178	LEU
1	B	46	TRP
1	B	95	LEU
1	C	46	TRP
1	C	178	LEU
1	D	46	TRP
1	D	95	LEU
1	D	127	MET
1	D	130	LYS

Continued on next page...

Continued from previous page...

Mol	Chain	Res	Type
1	D	146	ASN
1	D	179	LYS

Some sidechains can be flipped to improve hydrogen bonding and reduce clashes. All (20) such sidechains are listed below:

Mol	Chain	Res	Type
1	A	29	GLN
1	A	35	GLN
1	A	44	GLN
1	A	149	ASN
1	A	193	HIS
1	A	210	GLN
1	B	29	GLN
1	B	117	ASN
1	B	128	HIS
1	B	149	ASN
1	B	210	GLN
1	C	29	GLN
1	C	35	GLN
1	C	149	ASN
1	C	193	HIS
1	C	210	GLN
1	D	29	GLN
1	D	117	ASN
1	D	146	ASN
1	D	210	GLN

5.3.3 RNA ⓘ

There are no RNA molecules in this entry.

5.4 Non-standard residues in protein, DNA, RNA chains ⓘ

There are no non-standard protein/DNA/RNA residues in this entry.

5.5 Carbohydrates ⓘ

There are no carbohydrates in this entry.

5.6 Ligand geometry ⓘ

12 ligands are modelled in this entry.

In the following table, the Counts columns list the number of bonds (or angles) for which Mogul statistics could be retrieved, the number of bonds (or angles) that are observed in the model and the number of bonds (or angles) that are defined in the chemical component dictionary. The Link column lists molecule types, if any, to which the group is linked. The Z score for a bond length (or angle) is the number of standard deviations the observed value is removed from the expected value. A bond length (or angle) with $|Z| > 2$ is considered an outlier worth inspection. RMSZ is the root-mean-square of all Z scores of the bond lengths (or angles).

Mol	Type	Chain	Res	Link	Bond lengths			Bond angles		
					Counts	RMSZ	# Z > 2	Counts	RMSZ	# Z > 2
2	FMN	A	1218	-	32,33,33	0.95	1 (3%)	34,50,50	1.83	6 (17%)
3	NFZ	A	1219	-	8,14,14	4.09	4 (50%)	7,18,18	1.63	3 (42%)
5	DMS	B	1225	-	3,3,3	0.63	0	3,3,3	1.02	0
2	FMN	B	2218	-	32,33,33	1.01	3 (9%)	34,50,50	1.84	4 (11%)
3	NFZ	B	2219	-	8,14,14	3.76	3 (37%)	7,18,18	2.20	3 (42%)
5	DMS	C	1223	-	3,3,3	0.66	0	3,3,3	1.03	0
5	DMS	C	1224	-	3,3,3	0.58	0	3,3,3	1.00	0
2	FMN	C	3218	-	32,33,33	0.85	1 (3%)	34,50,50	1.83	7 (20%)
3	NFZ	C	3219	-	8,14,14	3.71	3 (37%)	7,18,18	1.87	2 (28%)
4	CIT	C	4220	-	3,12,12	0.40	0	3,17,17	0.93	0
2	FMN	D	4218	-	32,33,33	1.03	2 (6%)	34,50,50	2.08	6 (17%)
3	NFZ	D	4219	-	8,14,14	4.02	5 (62%)	7,18,18	1.39	1 (14%)

In the following table, the Chirals column lists the number of chiral outliers, the number of chiral centers analysed, the number of these observed in the model and the number defined in the chemical component dictionary. Similar counts are reported in the Torsion and Rings columns. '-' means no outliers of that kind were identified.

Mol	Type	Chain	Res	Link	Chirals	Torsions	Rings
2	FMN	A	1218	-	-	0/18/18/18	0/3/3/3
3	NFZ	A	1219	-	-	0/4/10/10	0/0/1/1
5	DMS	B	1225	-	-	0/0/0/0	0/0/0/0
2	FMN	B	2218	-	-	0/18/18/18	0/3/3/3
3	NFZ	B	2219	-	-	0/4/10/10	0/0/1/1
5	DMS	C	1223	-	-	0/0/0/0	0/0/0/0
5	DMS	C	1224	-	-	0/0/0/0	0/0/0/0
2	FMN	C	3218	-	-	0/18/18/18	0/3/3/3
3	NFZ	C	3219	-	-	0/4/10/10	0/0/1/1
4	CIT	C	4220	-	-	0/6/16/16	0/0/0/0
2	FMN	D	4218	-	-	0/18/18/18	0/3/3/3

Continued on next page...

Continued from previous page...

Mol	Type	Chain	Res	Link	Chirals	Torsions	Rings
3	NFZ	D	4219	-	-	0/4/10/10	0/0/1/1

All (22) bond length outliers are listed below:

Mol	Chain	Res	Type	Atoms	Z	Observed(Å)	Ideal(Å)
3	A	1219	NFZ	N3-N2	-6.71	1.31	1.38
3	D	4219	NFZ	N3-N2	-6.23	1.31	1.38
3	B	2219	NFZ	N3-N2	-5.86	1.31	1.38
3	C	3219	NFZ	N3-N2	-5.43	1.32	1.38
2	D	4218	FMN	C10-N10	-3.31	1.35	1.39
3	B	2219	NFZ	C6-N3	-3.27	1.32	1.37
3	D	4219	NFZ	C6-N3	-3.24	1.32	1.37
3	A	1219	NFZ	C6-N3	-3.23	1.32	1.37
3	C	3219	NFZ	C6-N3	-2.84	1.33	1.37
2	B	2218	FMN	C10-N10	-2.68	1.36	1.39
2	A	1218	FMN	C10-N10	-2.29	1.36	1.39
3	A	1219	NFZ	O4-C6	-2.21	1.21	1.24
3	D	4219	NFZ	O4-C6	-2.20	1.21	1.24
3	D	4219	NFZ	C5-N2	-2.01	1.26	1.28
2	C	3218	FMN	C4A-N5	2.08	1.36	1.33
2	B	2218	FMN	C9A-N10	2.12	1.41	1.38
2	D	4218	FMN	C4A-N5	2.21	1.36	1.33
2	B	2218	FMN	C4A-N5	2.38	1.37	1.33
3	B	2219	NFZ	O1-N1	7.96	1.38	1.22
3	D	4219	NFZ	O1-N1	8.29	1.39	1.22
3	C	3219	NFZ	O1-N1	8.30	1.39	1.22
3	A	1219	NFZ	O1-N1	8.38	1.39	1.22

All (32) bond angle outliers are listed below:

Mol	Chain	Res	Type	Atoms	Z	Observed(°)	Ideal(°)
2	D	4218	FMN	N3-C2-N1	-4.47	120.17	127.69
2	A	1218	FMN	N3-C2-N1	-4.36	120.35	127.69
2	C	3218	FMN	N3-C2-N1	-4.13	120.74	127.69
2	D	4218	FMN	C4A-C4-N3	-4.06	118.21	123.52
2	B	2218	FMN	N3-C2-N1	-3.95	121.05	127.69
2	B	2218	FMN	C4A-C4-N3	-3.65	118.75	123.52
2	A	1218	FMN	C4A-C4-N3	-3.04	119.55	123.52
2	C	3218	FMN	C4A-C4-N3	-3.00	119.60	123.52
2	C	3218	FMN	O5'-P-O1P	-2.11	101.78	107.08
3	B	2219	NFZ	O4-C6-N3	-2.03	116.42	119.24
3	A	1219	NFZ	O4-C6-N3	-2.01	116.45	119.24

Continued on next page...

Continued from previous page...

Mol	Chain	Res	Type	Atoms	Z	Observed(°)	Ideal(°)
3	A	1219	NFZ	C6-N3-N2	2.00	122.51	120.30
2	D	4218	FMN	C1'-N10-C9A	2.15	121.32	118.83
2	D	4218	FMN	C4A-N5-C5A	2.29	119.42	116.72
2	A	1218	FMN	C5A-C9A-N10	2.30	119.30	117.58
2	C	3218	FMN	C4-C4A-N5	2.34	121.55	118.70
3	D	4219	NFZ	N4-C6-N3	2.61	120.02	116.94
2	A	1218	FMN	C4-C4A-N5	2.67	121.95	118.70
2	C	3218	FMN	C5A-C9A-N10	2.89	119.75	117.58
3	A	1219	NFZ	N4-C6-N3	2.97	120.44	116.94
3	C	3219	NFZ	C6-N3-N2	3.06	123.68	120.30
2	B	2218	FMN	C4A-N5-C5A	3.07	120.34	116.72
2	D	4218	FMN	C5A-C9A-N10	3.13	119.93	117.58
3	C	3219	NFZ	N4-C6-N3	3.23	120.75	116.94
3	B	2219	NFZ	C6-N3-N2	3.33	123.98	120.30
2	A	1218	FMN	C4A-N5-C5A	3.43	120.77	116.72
2	C	3218	FMN	C4A-N5-C5A	3.50	120.84	116.72
3	B	2219	NFZ	N4-C6-N3	3.86	121.49	116.94
2	A	1218	FMN	C4-N3-C2	6.38	120.48	115.16
2	C	3218	FMN	C4-N3-C2	6.42	120.51	115.16
2	B	2218	FMN	C4-N3-C2	7.25	121.20	115.16
2	D	4218	FMN	C4-N3-C2	8.30	122.09	115.16

There are no chirality outliers.

There are no torsion outliers.

There are no ring outliers.

4 monomers are involved in 4 short contacts:

Mol	Chain	Res	Type	Clashes	Symm-Clashes
2	A	1218	FMN	1	0
2	B	2218	FMN	1	0
2	C	3218	FMN	1	0
2	D	4218	FMN	1	0

5.7 Other polymers [i](#)

There are no such residues in this entry.

5.8 Polymer linkage issues [i](#)

There are no chain breaks in this entry.

6 Fit of model and data ⓘ

6.1 Protein, DNA and RNA chains ⓘ

In the following table, the column labelled ‘#RSRZ> 2’ contains the number (and percentage) of RSRZ outliers, followed by percent RSRZ outliers for the chain as percentile scores relative to all X-ray entries and entries of similar resolution. The OWAB column contains the minimum, median, 95th percentile and maximum values of the occupancy-weighted average B-factor per residue. The column labelled ‘Q< 0.9’ lists the number of (and percentage) of residues with an average occupancy less than 0.9.

Mol	Chain	Analysed	<RSRZ>	#RSRZ>2	OWAB(Å ²)	Q<0.9
1	A	216/217 (99%)	0.25	10 (4%) 36 40	8, 12, 18, 23	0
1	B	217/217 (100%)	0.23	9 (4%) 41 44	7, 11, 17, 23	0
1	C	216/217 (99%)	0.08	5 (2%) 64 68	6, 9, 17, 20	0
1	D	217/217 (100%)	0.25	8 (3%) 45 50	8, 12, 20, 25	0
All	All	866/868 (99%)	0.21	32 (3%) 45 50	6, 11, 18, 25	0

All (32) RSRZ outliers are listed below:

Mol	Chain	Res	Type	RSRZ
1	A	70	PHE	4.7
1	B	111	PRO	4.1
1	B	110	THR	3.7
1	C	111	PRO	3.4
1	D	70	PHE	3.3
1	A	109	ALA	2.9
1	C	70	PHE	2.9
1	B	115	ALA	2.8
1	A	196	VAL	2.8
1	B	109	ALA	2.8
1	B	112	GLU	2.8
1	C	109	ALA	2.7
1	D	147	VAL	2.5
1	D	111	PRO	2.5
1	B	147	VAL	2.5
1	A	55	GLU	2.4
1	D	145	LEU	2.4
1	A	197	GLU	2.4
1	B	116	ALA	2.3
1	B	151	LEU	2.3
1	D	180	GLU	2.2

Continued on next page...

Continued from previous page...

Mol	Chain	Res	Type	RSRZ
1	A	151	LEU	2.2
1	A	115	ALA	2.2
1	D	196	VAL	2.1
1	A	145	LEU	2.1
1	B	145	LEU	2.1
1	A	111	PRO	2.1
1	A	110	THR	2.1
1	C	65	ALA	2.1
1	D	179	LYS	2.0
1	D	55	GLU	2.0
1	C	110	THR	2.0

6.2 Non-standard residues in protein, DNA, RNA chains [i](#)

There are no non-standard protein/DNA/RNA residues in this entry.

6.3 Carbohydrates [i](#)

There are no carbohydrates in this entry.

6.4 Ligands [i](#)

In the following table, the Atoms column lists the number of modelled atoms in the group and the number defined in the chemical component dictionary. LLDF column lists the quality of electron density of the group with respect to its neighbouring residues in protein, DNA or RNA chains. The B-factors column lists the minimum, median, 95th percentile and maximum values of B factors of atoms in the group. The column labelled 'Q< 0.9' lists the number of atoms with occupancy less than 0.9.

Mol	Type	Chain	Res	Atoms	RSCC	RSR	LLDF	B-factors(Å ²)	Q<0.9
5	DMS	B	1225	4/4	0.77	0.25	6.95	52,52,53,53	0
4	CIT	C	4220	13/13	0.74	0.24	3.59	35,38,39,40	0
5	DMS	C	1223	4/4	0.94	0.13	3.59	27,27,27,27	0
3	NFZ	D	4219	14/14	0.91	0.14	0.61	15,21,25,25	0
3	NFZ	A	1219	14/14	0.95	0.11	0.23	13,16,19,19	0
3	NFZ	C	3219	14/14	0.96	0.10	-0.08	10,13,17,19	0
3	NFZ	B	2219	14/14	0.95	0.10	-0.16	12,15,17,20	0
2	FMN	C	3218	31/31	0.97	0.08	-0.58	5,7,8,9	0
2	FMN	D	4218	31/31	0.96	0.08	-0.63	8,9,12,13	0
2	FMN	B	2218	31/31	0.97	0.09	-0.75	7,8,9,10	0

Continued on next page...

Continued from previous page...

Mol	Type	Chain	Res	Atoms	RSCC	RSR	LLDF	B-factors(\AA^2)	Q<0.9
2	FMN	A	1218	31/31	0.96	0.08	-0.77	8,9,10,13	0
5	DMS	C	1224	4/4	0.82	0.23	-	34,34,34,35	0

6.5 Other polymers [i](#)

There are no such residues in this entry.