



Full wwPDB X-ray Structure Validation Report ⓘ

Feb 1, 2016 – 06:52 AM GMT

PDB ID : 2YND
Title : Plasmodium vivax N-myristoyltransferase in complex with a pyrazole sulphonamide inhibitor.
Authors : Wright, M.H.; Clough, B.; Rackham, M.D.; Brannigan, J.A.; Grainger, M.; Bottrill, A.R.; Heal, W.P.; Broncel, M.; Serwa, R.A.; Mann, D.; Leatherbarrow, R.J.; Wilkinson, A.J.; Holder, A.A.; Tate, E.W.
Deposited on : 2012-10-13
Resolution : 1.89 Å(reported)

This is a Full wwPDB X-ray Structure Validation Report for a publicly released PDB entry.
We welcome your comments at validation@mail.wwpdb.org
A user guide is available at
<http://wwpdb.org/validation/2016/XrayValidationReportHelp>
with specific help available everywhere you see the ⓘ symbol.

The following versions of software and data (see [references ⓘ](#)) were used in the production of this report:

MolProbity : 4.02b-467
Mogul : 1.7 (RC4), CSD as536be (2015)
Xtriage (Phenix) : 1.9-1692
EDS : rb-20026688
Percentile statistics : 20151230.v01 (using entries in the PDB archive December 30th 2015)
Refmac : 5.8.0135
CCP4 : 6.5.0
Ideal geometry (proteins) : Engh & Huber (2001)
Ideal geometry (DNA, RNA) : Parkinson et al. (1996)
Validation Pipeline (wwPDB-VP) : trunk26865

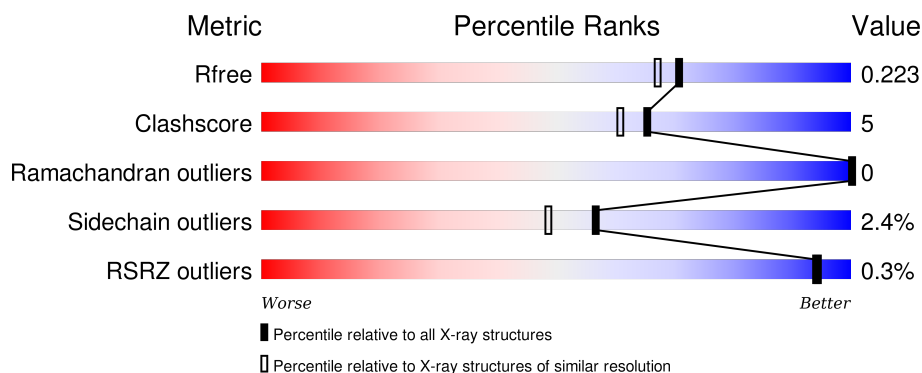
1 Overall quality at a glance

The following experimental techniques were used to determine the structure:

X-RAY DIFFRACTION

The reported resolution of this entry is 1.89 Å.

Percentile scores (ranging between 0-100) for global validation metrics of the entry are shown in the following graphic. The table shows the number of entries on which the scores are based.



Metric	Whole archive (#Entries)	Similar resolution (#Entries, resolution range(Å))
R_{free}	91344	4755 (1.90-1.90)
Clashscore	102246	5398 (1.90-1.90)
Ramachandran outliers	100387	5338 (1.90-1.90)
Sidechain outliers	100360	5339 (1.90-1.90)
RSRZ outliers	91569	4766 (1.90-1.90)

The table below summarises the geometric issues observed across the polymeric chains and their fit to the electron density. The red, orange, yellow and green segments on the lower bar indicate the fraction of residues that contain outliers for ≥ 3 , 2, 1 and 0 types of geometric quality criteria. A grey segment represents the fraction of residues that are not modelled. The numeric value for each fraction is indicated below the corresponding segment, with a dot representing fractions $\leq 5\%$. The upper red bar (where present) indicates the fraction of residues that have poor fit to the electron density. The numeric value is given above the bar.

Mol	Chain	Length	Quality of chain
1	A	385	<div> <div>88%</div> <div>11%</div> <div>.</div> </div>
1	B	385	<div> <div>85%</div> <div>14%</div> <div>.</div> </div>
1	C	385	<div> <div>84%</div> <div>11%</div> <div>..</div> </div>

The following table lists non-polymeric compounds, carbohydrate monomers and non-standard residues in protein, DNA, RNA chains that are outliers for geometric or electron-density-fit criteria:

Mol	Type	Chain	Res	Chirality	Geometry	Clashes	Electron density
2	DMS	A	999	-	-	-	X
2	DMS	B	999	-	-	-	X
2	DMS	C	999	-	-	-	X
4	646	B	1001	-	-	-	X

2 Entry composition [i](#)

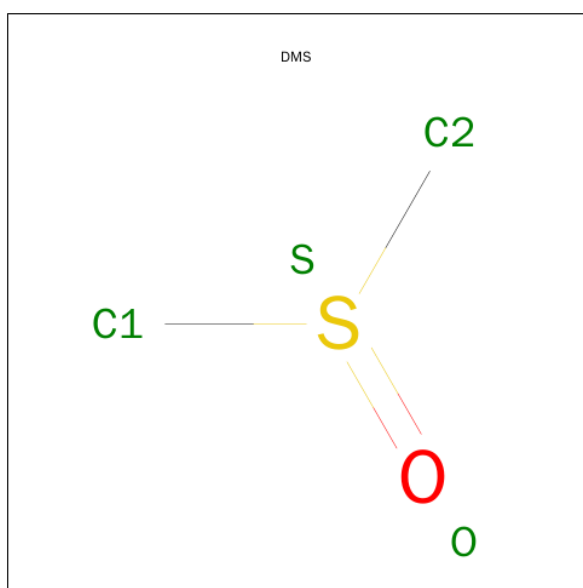
There are 8 unique types of molecules in this entry. The entry contains 11146 atoms, of which 0 are hydrogens and 0 are deuteriums.

In the tables below, the ZeroOcc column contains the number of atoms modelled with zero occupancy, the AltConf column contains the number of residues with at least one atom in alternate conformation and the Trace column contains the number of residues modelled with at most 2 atoms.

- Molecule 1 is a protein called GLYCYLPEPTIDE N-TETRADECANOYLTRANSFERASE.

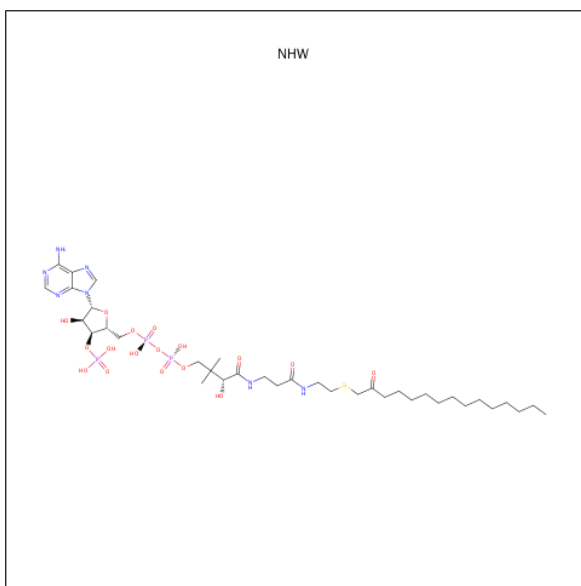
Mol	Chain	Residues	Atoms					ZeroOcc	AltConf	Trace
1	A	385	Total	C	N	O	S	8	8	0
			3238	2102	529	595	12			
1	B	385	Total	C	N	O	S	0	4	0
			3215	2087	524	593	11			
1	C	368	Total	C	N	O	S	5	8	0
			3114	2025	505	574	10			

- Molecule 2 is DIMETHYL SULFOXIDE (three-letter code: DMS) (formula: C₂H₆OS).



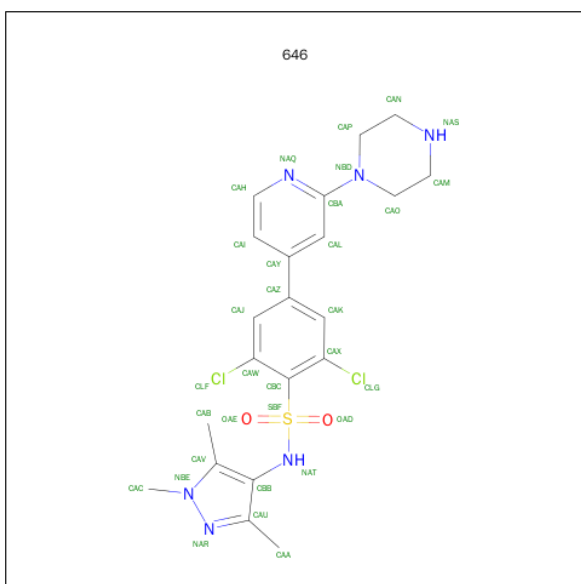
Mol	Chain	Residues	Atoms				ZeroOcc	AltConf
2	A	1	Total	C	O	S	0	0
			4	2	1	1		
2	B	1	Total	C	O	S	0	0
			4	2	1	1		
2	C	1	Total	C	O	S	0	0
			4	2	1	1		

- Molecule 3 is 2-OXOPENTADECYL-COA (three-letter code: NHW) (formula: $C_{36}H_{64}N_7O_{17}P_3S$).



Mol	Chain	Residues	Atoms						ZeroOcc	AltConf
3	A	1	Total	C	N	O	P	S	0	0
			64	36	7	17	3	1		
3	B	1	Total	C	N	O	P	S	0	0
			64	36	7	17	3	1		
3	C	1	Total	C	N	O	P	S	0	0
			64	36	7	17	3	1		

- Molecule 4 is 2,6-DICHLORO-4-(2-PIPERAZIN-1-YLPYRIDIN-4-YL)-N-(1,3,5-TRIMETHYL-1H-PYRAZOL-4-YL)BENZENESULFONAMIDE (three-letter code: 646) (formula: $C_{21}H_{24}Cl_2N_6O_2S$).



Mol	Chain	Residues	Atoms						ZeroOcc	AltConf
4	A	1	Total	C	Cl	N	O	S	0	0
			32	21	2	6	2	1		
4	B	1	Total	C	Cl	N	O	S	0	0
			32	21	2	6	2	1		
4	C	1	Total	C	Cl	N	O	S	0	0
			32	21	2	6	2	1		

- Molecule 5 is SULFATE ION (three-letter code: SO4) (formula: O₄S).



Mol	Chain	Residues	Atoms		ZeroOcc	AltConf
5	A	1	Total	O S	0	0
			5	4 1		

- Molecule 6 is MAGNESIUM ION (three-letter code: MG) (formula: Mg).

Mol	Chain	Residues	Atoms		ZeroOcc	AltConf
6	B	1	Total	Mg	0	0
			1	1		
6	A	1	Total	Mg	0	0
			1	1		
6	C	1	Total	Mg	0	0
			1	1		

- Molecule 7 is CHLORIDE ION (three-letter code: CL) (formula: Cl).

Mol	Chain	Residues	Atoms		ZeroOcc	AltConf
7	B	1	Total 1	Cl 1	0	0
7	A	1	Total 1	Cl 1	0	0
7	C	1	Total 1	Cl 1	0	0

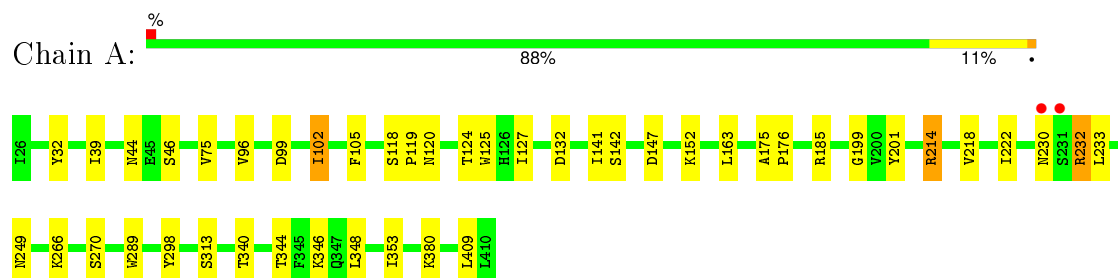
- Molecule 8 is water.

Mol	Chain	Residues	Atoms		ZeroOcc	AltConf
8	A	471	Total 471	O 471	0	0
8	B	420	Total 420	O 420	0	0
8	C	377	Total 377	O 377	0	0

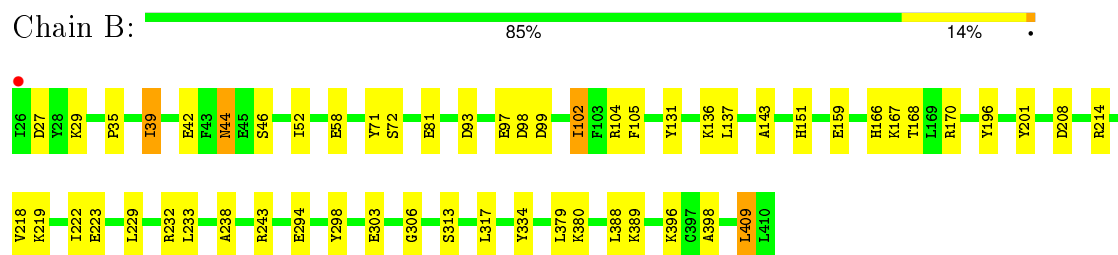
3 Residue-property plots [i](#)

These plots are drawn for all protein, RNA and DNA chains in the entry. The first graphic for a chain summarises the proportions of errors displayed in the second graphic. The second graphic shows the sequence view annotated by issues in geometry and electron density. Residues are color-coded according to the number of geometric quality criteria for which they contain at least one outlier: green = 0, yellow = 1, orange = 2 and red = 3 or more. A red dot above a residue indicates a poor fit to the electron density ($RSRZ > 2$). Stretches of 2 or more consecutive residues without any outlier are shown as a green connector. Residues present in the sample, but not in the model, are shown in grey.

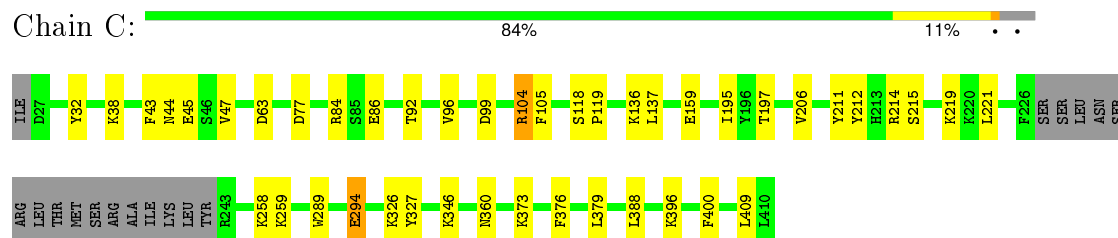
• Molecule 1: GLYCYLPEPTIDE N-TETRADECANOYLTRANSFERASE



• Molecule 1: GLYCYLPEPTIDE N-TETRADECANOYLTRANSFERASE



• Molecule 1: GLYCYLPEPTIDE N-TETRADECANOYLTRANSFERASE



4 Data and refinement statistics

Property	Value	Source
Space group	P 21 21 21	Depositor
Cell constants a, b, c, α , β , γ	57.45Å 119.05Å 176.73Å 90.00° 90.00° 90.00°	Depositor
Resolution (Å)	59.60 – 1.89 59.53 – 1.89	Depositor EDS
% Data completeness (in resolution range)	99.6 (59.60-1.89) 99.7 (59.53-1.89)	Depositor EDS
R_{merge}	0.17	Depositor
R_{sym}	(Not available)	Depositor
$\langle I/\sigma(I) \rangle$ ¹	2.35 (at 1.88Å)	Xtriage
Refinement program	REFMAC 5.7.0029	Depositor
R, R_{free}	0.168 , 0.223 0.169 , 0.223	Depositor DCC
R_{free} test set	4917 reflections (5.31%)	DCC
Wilson B-factor (Å ²)	15.4	Xtriage
Anisotropy	0.741	Xtriage
Bulk solvent k_{sol} (e/Å ³), B_{sol} (Å ²)	0.33 , 45.5	EDS
Estimated twinning fraction	No twinning to report.	Xtriage
L-test for twinning ²	$\langle L \rangle = 0.47$, $\langle L^2 \rangle = 0.30$	Xtriage
Outliers	0 of 97812 reflections	Xtriage
F_o, F_c correlation	0.95	EDS
Total number of atoms	11146	wwPDB-VP
Average B, all atoms (Å ²)	17.0	wwPDB-VP

Xtriage's analysis on translational NCS is as follows: *The largest off-origin peak in the Patterson function is 4.24% of the height of the origin peak. No significant pseudotranslation is detected.*

¹Intensities estimated from amplitudes.

²Theoretical values of $\langle |L| \rangle$, $\langle L^2 \rangle$ for acentric reflections are 0.5, 0.375 respectively for untwinned datasets, and 0.333, 0.2 for perfectly twinned datasets.

5 Model quality ⓘ

5.1 Standard geometry ⓘ

Bond lengths and bond angles in the following residue types are not validated in this section: MG, CL, NHW, DMS, SO4, 646

The Z score for a bond length (or angle) is the number of standard deviations the observed value is removed from the expected value. A bond length (or angle) with $|Z| > 5$ is considered an outlier worth inspection. RMSZ is the root-mean-square of all Z scores of the bond lengths (or angles).

Mol	Chain	Bond lengths		Bond angles	
		RMSZ	$\# Z > 5$	RMSZ	$\# Z > 5$
1	A	1.13	3/3329 (0.1%)	1.01	4/4506 (0.1%)
1	B	1.03	2/3297 (0.1%)	1.02	5/4464 (0.1%)
1	C	1.00	1/3199 (0.0%)	1.01	8/4333 (0.2%)
All	All	1.05	6/9825 (0.1%)	1.01	17/13303 (0.1%)

All (6) bond length outliers are listed below:

Mol	Chain	Res	Type	Atoms	Z	Observed(Å)	Ideal(Å)
1	A	346	LYS	CD-CE	-16.45	1.10	1.51
1	B	58	GLU	CD-OE1	5.96	1.32	1.25
1	C	63	ASP	CB-CG	5.41	1.63	1.51
1	B	196	TYR	CE2-CZ	5.40	1.45	1.38
1	A	380[A]	LYS	N-CA	5.09	1.56	1.46
1	A	380[B]	LYS	N-CA	5.09	1.56	1.46

All (17) bond angle outliers are listed below:

Mol	Chain	Res	Type	Atoms	Z	Observed(°)	Ideal(°)
1	C	104	ARG	NE-CZ-NH2	-10.67	114.97	120.30
1	A	346	LYS	CG-CD-CE	8.94	138.73	111.90
1	C	104	ARG	NE-CZ-NH1	8.61	124.60	120.30
1	A	409	LEU	CB-CG-CD2	7.35	123.50	111.00
1	B	104	ARG	NE-CZ-NH1	7.28	123.94	120.30
1	B	104	ARG	NE-CZ-NH2	-6.47	117.07	120.30
1	C	214	ARG	NE-CZ-NH1	6.47	123.53	120.30
1	B	208	ASP	CB-CG-OD1	6.44	124.10	118.30
1	C	84	ARG	NE-CZ-NH1	5.93	123.27	120.30
1	C	409	LEU	CA-CB-CG	5.93	128.95	115.30
1	A	409	LEU	CA-CB-CG	5.93	128.93	115.30
1	B	93	ASP	CB-CG-OD1	5.76	123.48	118.30

Continued on next page...

Continued from previous page...

Mol	Chain	Res	Type	Atoms	Z	Observed(°)	Ideal(°)
1	C	77	ASP	CB-CG-OD1	5.53	123.27	118.30
1	B	170	ARG	NE-CZ-NH2	-5.33	117.63	120.30
1	C	137	LEU	CB-CG-CD1	5.27	119.96	111.00
1	A	132	ASP	CB-CG-OD1	5.13	122.91	118.30
1	C	214	ARG	NE-CZ-NH2	-5.09	117.75	120.30

There are no chirality outliers.

There are no planarity outliers.

5.2 Too-close contacts

In the following table, the Non-H and H(model) columns list the number of non-hydrogen atoms and hydrogen atoms in the chain respectively. The H(added) column lists the number of hydrogen atoms added and optimized by MolProbity. The Clashes column lists the number of clashes within the asymmetric unit, whereas Symm-Clashes lists symmetry related clashes.

Mol	Chain	Non-H	H(model)	H(added)	Clashes	Symm-Clashes
1	A	3238	0	3232	30	0
1	B	3215	0	3199	34	0
1	C	3114	0	3076	30	0
2	A	4	0	6	0	0
2	B	4	0	6	0	0
2	C	4	0	6	0	0
3	A	64	0	60	0	0
3	B	64	0	60	0	0
3	C	64	0	60	0	0
4	A	32	0	24	4	0
4	B	32	0	24	6	0
4	C	32	0	24	6	0
5	A	5	0	0	0	0
6	A	1	0	0	0	0
6	B	1	0	0	0	0
6	C	1	0	0	0	0
7	A	1	0	0	0	0
7	B	1	0	0	0	0
7	C	1	0	0	0	0
8	A	471	0	0	5	0
8	B	420	0	0	2	0
8	C	377	0	0	6	0
All	All	11146	0	9777	98	0

The all-atom clashscore is defined as the number of clashes found per 1000 atoms (including hydrogen atoms). The all-atom clashscore for this structure is 5.

All (98) close contacts within the same asymmetric unit are listed below, sorted by their clash magnitude.

Atom-1	Atom-2	Interatomic distance (Å)	Clash overlap (Å)
1:A:344:THR:HG21	1:B:42[B]:GLU:HG2	1.50	0.91
1:A:230:ASN:OD1	1:A:232:ARG:HB2	1.77	0.84
1:A:44[B]:ASN:C	1:A:44[B]:ASN:HD22	1.82	0.83
1:C:206[A]:VAL:HG12	1:C:400:PHE:CE1	2.25	0.70
1:C:215:SER:HB3	1:C:221:LEU:HD12	1.73	0.69
1:B:44:ASN:HD22	1:B:46:SER:H	1.39	0.68
1:C:212:TYR:OH	1:C:373:LYS:NZ	2.27	0.66
1:A:218:VAL:O	1:A:222:ILE:HG12	1.94	0.66
1:B:388:LEU:HD13	4:B:1001:646:NAQ	2.12	0.65
1:B:27:ASP:HB2	8:B:2001:HOH:O	1.96	0.65
1:C:197:THR:HB	1:C:388:LEU:HD11	1.80	0.64
1:C:346:LYS:HE3	1:C:379:LEU:HD21	1.79	0.63
1:B:105:PHE:CD1	4:B:1001:646:HACA	2.35	0.62
1:A:44[A]:ASN:ND2	8:A:2023:HOH:O	2.07	0.61
1:C:294:GLU:HA	1:C:294:GLU:OE1	1.99	0.61
1:A:199:GLY:HA3	4:A:1001:646:HAH	1.84	0.60
4:C:1001:646:HABB	4:C:1001:646:CAJ	2.32	0.59
1:A:44[B]:ASN:C	1:A:44[B]:ASN:ND2	2.54	0.58
1:C:105:PHE:CD1	4:C:1001:646:HACA	2.39	0.58
1:A:141:ILE:HD12	1:A:163:LEU:HD13	1.86	0.57
1:C:346:LYS:HE3	1:C:379:LEU:CD2	2.33	0.57
1:B:98:ASP:HA	4:B:1001:646:HABA	1.88	0.56
1:C:259:LYS:NZ	8:C:2267:HOH:O	2.28	0.56
1:C:118:SER:HB2	1:C:119:PRO:CD	2.37	0.55
1:B:44:ASN:ND2	1:B:46:SER:H	2.05	0.54
1:C:32[B]:TYR:HE2	8:C:2010:HOH:O	1.89	0.54
1:B:105:PHE:CE1	4:B:1001:646:HACA	2.42	0.54
1:C:326:LYS:HG3	1:C:326:LYS:O	2.08	0.53
1:C:105:PHE:CE1	4:C:1001:646:HACA	2.43	0.53
1:A:124:THR:HG23	8:A:2190:HOH:O	2.09	0.52
1:A:32:TYR:OH	1:A:39:ILE:HG12	2.10	0.51
1:A:39:ILE:HD12	1:A:201:TYR:HE2	1.76	0.51
1:B:44:ASN:HD22	1:B:46:SER:N	2.07	0.51
1:A:105:PHE:CD1	4:A:1001:646:HACA	2.46	0.50
4:C:1001:646:CLF	4:C:1001:646:NAT	2.81	0.50
1:A:127:ILE:HD11	1:A:185:ARG:HD2	1.94	0.50
4:A:1001:646:CLG	4:A:1001:646:OAD	2.67	0.49

Continued on next page...

Continued from previous page...

Atom-1	Atom-2	Interatomic distance (Å)	Clash overlap (Å)
1:C:43:PHE:CE1	1:C:396:LYS:HG3	2.47	0.49
1:C:92:THR:O	1:C:104:ARG:HD2	2.12	0.49
1:B:97:GLU:OE2	1:B:167:LYS:HE3	2.12	0.49
1:A:44[B]:ASN:ND2	1:A:46:SER:H	2.10	0.49
1:C:32[B]:TYR:CE1	8:C:2008:HOH:O	2.66	0.49
1:B:317:LEU:HB3	1:B:334:TYR:CE1	2.48	0.48
1:A:266:LYS:HE2	8:C:2021:HOH:O	2.13	0.48
1:B:388:LEU:HD13	4:B:1001:646:CAH	2.43	0.48
1:C:326:LYS:HG2	1:C:327:TYR:CD2	2.49	0.48
1:C:86:GLU:HG2	8:C:2173:HOH:O	2.13	0.48
1:A:230:ASN:O	1:A:233:LEU:N	2.43	0.47
1:B:218:VAL:O	1:B:222:ILE:HG12	2.14	0.47
1:B:298:TYR:O	1:B:313:SER:HA	2.14	0.47
1:C:215:SER:CB	1:C:221:LEU:HD12	2.41	0.47
1:C:118:SER:HB2	1:C:119:PRO:HD2	1.97	0.47
1:A:125:TRP:O	1:A:142:SER:HA	2.14	0.47
1:B:379:LEU:O	1:B:380:LYS:HB2	2.15	0.47
1:B:71:TYR:CE1	1:B:131:TYR:HD1	2.32	0.46
1:B:44:ASN:ND2	1:B:46:SER:OG	2.42	0.46
1:A:118:SER:HB3	1:A:289:TRP:CZ2	2.50	0.46
1:B:159:GLU:HG3	1:B:409:LEU:HD13	1.97	0.46
4:B:1001:646:CLG	4:B:1001:646:OAD	2.71	0.46
1:B:409:LEU:HD23	1:B:409:LEU:N	2.31	0.46
1:B:35:PRO:HB3	1:B:52:ILE:HD12	1.98	0.46
1:B:219:LYS:O	1:B:223:GLU:HG3	2.17	0.45
4:C:1001:646:HAP	4:C:1001:646:HAL	1.61	0.44
1:B:136:LYS:HG3	1:B:137:LEU:N	2.32	0.44
1:B:303:GLU:OE2	1:B:306:GLY:HA2	2.16	0.44
1:C:96:VAL:HB	1:C:105:PHE:CD2	2.53	0.44
1:A:270:SER:HB2	1:C:44:ASN:HB3	1.99	0.44
1:A:96:VAL:HB	1:A:105:PHE:CD2	2.53	0.44
1:A:270:SER:CB	1:C:44:ASN:HB3	2.48	0.44
1:C:212:TYR:CD1	1:C:376:PHE:CE2	3.06	0.43
4:A:1001:646:HAB	4:A:1001:646:HAC	1.78	0.43
1:A:175:ALA:HB3	1:A:176:PRO:HD3	2.00	0.43
1:A:214:ARG:HG3	1:A:353:ILE:HD13	2.00	0.43
4:C:1001:646:HABB	4:C:1001:646:CAW	2.49	0.43
1:C:32[A]:TYR:CD1	1:C:38:LYS:HE3	2.53	0.43
1:B:29:LYS:HD3	1:B:29:LYS:HA	1.84	0.42
1:C:258:LYS:HE3	1:C:258:LYS:HB2	1.94	0.42
1:C:159:GLU:HG3	1:C:195:ILE:HG23	2.01	0.42

Continued on next page...

Continued from previous page...

Atom-1	Atom-2	Interatomic distance (Å)	Clash overlap (Å)
1:A:44[B]:ASN:HD22	1:A:46:SER:H	1.67	0.42
1:A:75:VAL:HG23	8:A:2101:HOH:O	2.19	0.42
1:B:233:LEU:HG	1:B:238:ALA:HB2	2.01	0.42
1:C:360:ASN:ND2	8:C:2243:HOH:O	2.52	0.42
1:B:39:ILE:CD1	1:B:201:TYR:HE2	2.32	0.42
1:B:166:HIS:CE1	1:B:168:THR:HG23	2.54	0.42
1:B:136:LYS:HE3	8:B:2177:HOH:O	2.20	0.42
1:B:389:LYS:HD2	1:B:389:LYS:N	2.34	0.42
1:B:102:ILE:HD13	1:B:102:ILE:HA	1.74	0.41
1:A:249:ASN:ND2	8:A:2312:HOH:O	2.40	0.41
1:A:120:ASN:HB3	8:A:2186:HOH:O	2.21	0.41
1:C:118:SER:HB3	1:C:289:TRP:CZ2	2.55	0.41
1:A:340:THR:HB	1:A:348:LEU:HD22	2.03	0.41
1:A:102:ILE:H	1:A:102:ILE:HG13	1.50	0.41
1:B:222:ILE:HD12	1:B:229:LEU:HG	2.03	0.41
1:B:44:ASN:C	1:B:44:ASN:HD22	2.23	0.41
1:B:151:HIS:HE1	1:B:398:ALA:O	2.04	0.41
1:C:47:VAL:CG1	1:C:396:LYS:HD2	2.52	0.40
1:B:143:ALA:HA	1:B:159:GLU:O	2.21	0.40
1:A:298:TYR:O	1:A:313:SER:HA	2.22	0.40

There are no symmetry-related clashes.

5.3 Torsion angles [i](#)

5.3.1 Protein backbone [i](#)

In the following table, the Percentiles column shows the percent Ramachandran outliers of the chain as a percentile score with respect to all X-ray entries followed by that with respect to entries of similar resolution.

The Analysed column shows the number of residues for which the backbone conformation was analysed, and the total number of residues.

Mol	Chain	Analysed	Favoured	Allowed	Outliers	Percentiles	
1	A	391/385 (102%)	371 (95%)	20 (5%)	0	100	100
1	B	387/385 (100%)	374 (97%)	13 (3%)	0	100	100
1	C	372/385 (97%)	360 (97%)	12 (3%)	0	100	100
All	All	1150/1155 (100%)	1105 (96%)	45 (4%)	0	100	100

There are no Ramachandran outliers to report.

5.3.2 Protein sidechains ⓘ

In the following table, the Percentiles column shows the percent sidechain outliers of the chain as a percentile score with respect to all X-ray entries followed by that with respect to entries of similar resolution.

The Analysed column shows the number of residues for which the sidechain conformation was analysed, and the total number of residues.

Mol	Chain	Analysed	Rotameric	Outliers	Percentiles	
1	A	359/351 (102%)	352 (98%)	7 (2%)	65	59
1	B	355/351 (101%)	343 (97%)	12 (3%)	44	33
1	C	343/351 (98%)	336 (98%)	7 (2%)	63	57
All	All	1057/1053 (100%)	1031 (98%)	26 (2%)	57	47

All (26) residues with a non-rotameric sidechain are listed below:

Mol	Chain	Res	Type
1	A	99	ASP
1	A	102	ILE
1	A	119	PRO
1	A	147	ASP
1	A	152	LYS
1	A	214	ARG
1	A	232	ARG
1	B	39	ILE
1	B	44	ASN
1	B	72	SER
1	B	81	GLU
1	B	99	ASP
1	B	102	ILE
1	B	214	ARG
1	B	232	ARG
1	B	243	ARG
1	B	294	GLU
1	B	396	LYS
1	B	409	LEU
1	C	45[A]	GLU
1	C	45[B]	GLU
1	C	99	ASP
1	C	136	LYS

Continued on next page...

Continued from previous page...

Mol	Chain	Res	Type
1	C	211	TYR
1	C	219	LYS
1	C	294	GLU

Some sidechains can be flipped to improve hydrogen bonding and reduce clashes. All (18) such sidechains are listed below:

Mol	Chain	Res	Type
1	A	34	GLN
1	A	40	ASN
1	A	106	ASN
1	A	151	HIS
1	A	187	ASN
1	A	249	ASN
1	B	44	ASN
1	B	106	ASN
1	B	151	HIS
1	B	249	ASN
1	B	276	ASN
1	B	371	GLN
1	C	106	ASN
1	C	193	GLN
1	C	249	ASN
1	C	295	ASN
1	C	350	GLN
1	C	360	ASN

5.3.3 RNA ⓘ

There are no RNA molecules in this entry.

5.4 Non-standard residues in protein, DNA, RNA chains ⓘ

There are no non-standard protein/DNA/RNA residues in this entry.

5.5 Carbohydrates ⓘ

There are no carbohydrates in this entry.

5.6 Ligand geometry

Of 16 ligands modelled in this entry, 6 are monoatomic - leaving 10 for Mogul analysis.

In the following table, the Counts columns list the number of bonds (or angles) for which Mogul statistics could be retrieved, the number of bonds (or angles) that are observed in the model and the number of bonds (or angles) that are defined in the chemical component dictionary. The Link column lists molecule types, if any, to which the group is linked. The Z score for a bond length (or angle) is the number of standard deviations the observed value is removed from the expected value. A bond length (or angle) with $|Z| > 2$ is considered an outlier worth inspection. RMSZ is the root-mean-square of all Z scores of the bond lengths (or angles).

Mol	Type	Chain	Res	Link	Bond lengths			Bond angles		
					Counts	RMSZ	# $ Z > 2$	Counts	RMSZ	# $ Z > 2$
3	NHW	A	1000	6	56,66,66	1.37	8 (14%)	68,92,92	2.02	12 (17%)
4	646	A	1001	-	33,35,35	2.27	9 (27%)	44,52,52	2.68	18 (40%)
5	SO4	A	1414	-	4,4,4	0.44	0	6,6,6	0.43	0
2	DMS	A	999	-	3,3,3	0.26	0	3,3,3	1.39	0
3	NHW	B	1000	6	56,66,66	1.35	5 (8%)	68,92,92	1.45	7 (10%)
4	646	B	1001	-	33,35,35	2.29	7 (21%)	44,52,52	2.69	15 (34%)
2	DMS	B	999	-	3,3,3	0.22	0	3,3,3	1.59	1 (33%)
3	NHW	C	1000	6	56,66,66	1.28	4 (7%)	68,92,92	1.56	8 (11%)
4	646	C	1001	-	33,35,35	2.53	8 (24%)	44,52,52	3.36	19 (43%)
2	DMS	C	999	-	3,3,3	0.36	0	3,3,3	1.59	1 (33%)

In the following table, the Chirals column lists the number of chiral outliers, the number of chiral centers analysed, the number of these observed in the model and the number defined in the chemical component dictionary. Similar counts are reported in the Torsion and Rings columns. '-' means no outliers of that kind were identified.

Mol	Type	Chain	Res	Link	Chirals	Torsions	Rings
3	NHW	A	1000	6	-	0/61/81/81	0/3/3/3
4	646	A	1001	-	-	0/17/27/27	0/4/4/4
5	SO4	A	1414	-	-	0/0/0/0	0/0/0/0
2	DMS	A	999	-	-	0/0/0/0	0/0/0/0
3	NHW	B	1000	6	-	0/61/81/81	0/3/3/3
4	646	B	1001	-	-	0/17/27/27	0/4/4/4
2	DMS	B	999	-	-	0/0/0/0	0/0/0/0
3	NHW	C	1000	6	-	0/61/81/81	0/3/3/3
4	646	C	1001	-	-	0/17/27/27	0/4/4/4
2	DMS	C	999	-	-	0/0/0/0	0/0/0/0

All (41) bond length outliers are listed below:

Mol	Chain	Res	Type	Atoms	Z	Observed(Å)	Ideal(Å)
4	C	1001	646	CBC-SBF	-7.62	1.65	1.79
4	B	1001	646	CBC-SBF	-6.48	1.67	1.79
4	A	1001	646	CBC-SBF	-5.86	1.68	1.79
3	B	1000	NHW	P1A-O2A	-2.44	1.44	1.54
3	C	1000	NHW	P2A-O4A	-2.21	1.45	1.54
3	A	1000	NHW	P2A-O5A	-2.08	1.43	1.51
3	B	1000	NHW	C5X-C4X	2.01	1.58	1.51
4	A	1001	646	CAO-NBD	2.04	1.49	1.46
4	C	1001	646	CAW-CLF	2.15	1.78	1.73
3	A	1000	NHW	C2A-N3A	2.18	1.36	1.32
3	A	1000	NHW	C7-C6	2.18	1.58	1.51
4	C	1001	646	OAE-SBF	2.19	1.45	1.43
3	C	1000	NHW	P3X-O7A	2.25	1.62	1.54
3	A	1000	NHW	C2M-C1M	2.29	1.57	1.50
3	A	1000	NHW	CP-C1M	2.30	1.55	1.51
4	A	1001	646	CAW-CLF	2.32	1.79	1.73
4	A	1001	646	CBA-NBD	2.39	1.42	1.37
4	B	1001	646	CAX-CLG	2.61	1.80	1.73
4	C	1001	646	CAC-NBE	2.66	1.49	1.46
3	B	1000	NHW	C6-C5	2.74	1.56	1.51
4	A	1001	646	CAU-NAR	2.83	1.39	1.33
3	A	1000	NHW	C6-C5	2.87	1.56	1.51
4	C	1001	646	CBB-NAT	2.92	1.50	1.43
4	C	1001	646	CAU-NAR	3.01	1.39	1.33
4	B	1001	646	CAW-CLF	3.08	1.81	1.73
3	B	1000	NHW	CP-C1M	3.41	1.57	1.51
3	C	1000	NHW	P3X-O3X	3.42	1.70	1.60
3	C	1000	NHW	O4X-C1X	3.52	1.45	1.41
4	A	1001	646	OAE-SBF	3.62	1.47	1.43
3	A	1000	NHW	P3X-O3X	3.73	1.71	1.60
4	A	1001	646	OAD-SBF	3.81	1.47	1.43
3	A	1000	NHW	O4X-C1X	3.86	1.46	1.41
3	B	1000	NHW	O10-C10	3.94	1.50	1.42
4	B	1001	646	CAC-NBE	4.39	1.51	1.46
4	B	1001	646	OAD-SBF	4.76	1.48	1.43
4	B	1001	646	NAR-NBE	4.91	1.42	1.37
4	B	1001	646	CAV-NBE	5.24	1.45	1.37
4	A	1001	646	CAV-NBE	5.46	1.45	1.37
4	A	1001	646	NAR-NBE	6.05	1.43	1.37
4	C	1001	646	NAR-NBE	6.55	1.44	1.37
4	C	1001	646	CAV-NBE	7.21	1.47	1.37

All (81) bond angle outliers are listed below:

Mol	Chain	Res	Type	Atoms	Z	Observed(°)	Ideal(°)
4	C	1001	646	CAW-CBC-SBF	-13.10	115.27	123.30
3	A	1000	NHW	N3A-C2A-N1A	-10.28	121.03	128.89
3	C	1000	NHW	N3A-C2A-N1A	-7.55	123.12	128.89
3	B	1000	NHW	N3A-C2A-N1A	-6.87	123.64	128.89
4	C	1001	646	CBC-CAW-CLF	-5.11	117.78	121.55
3	A	1000	NHW	C2X-C1X-N9A	-4.98	106.68	114.29
4	B	1001	646	CBB-CAV-NBE	-4.77	101.17	106.87
4	C	1001	646	OAE-SBF-OAD	-4.61	113.42	119.54
4	A	1001	646	CAK-CAX-CLG	-4.55	111.49	118.50
4	A	1001	646	CAC-NBE-CAV	-4.53	121.50	128.84
4	C	1001	646	CAL-CBA-NBD	-4.20	117.04	122.15
3	A	1000	NHW	O1M-C1M-CP	-4.05	116.34	122.14
3	A	1000	NHW	C4A-C5A-N7A	-4.04	105.76	109.48
3	B	1000	NHW	C4A-C5A-N7A	-3.99	105.81	109.48
4	C	1001	646	CAN-CAP-NBD	-3.85	101.24	110.70
4	A	1001	646	CBB-CAV-NBE	-3.74	102.39	106.87
4	C	1001	646	CAI-CAH-NAQ	-3.72	119.66	123.90
4	B	1001	646	CAK-CAX-CLG	-3.25	113.50	118.50
3	B	1000	NHW	C2-C3-N4	-3.21	105.95	112.36
4	B	1001	646	CAL-CAY-CAZ	-3.19	115.48	120.90
4	C	1001	646	CAP-CAN-NAS	-3.12	102.76	111.55
3	A	1000	NHW	P3X-O3X-C3X	-3.07	114.20	121.56
3	A	1000	NHW	O4X-C4X-C5X	-2.97	98.71	109.32
4	B	1001	646	OAE-SBF-OAD	-2.89	115.70	119.54
4	B	1001	646	CAW-CBC-SBF	-2.88	121.53	123.30
4	C	1001	646	CBC-CAX-CLG	-2.82	119.47	121.55
4	A	1001	646	CAI-CAH-NAQ	-2.70	120.81	123.90
3	B	1000	NHW	P3X-O3X-C3X	-2.69	115.12	121.56
4	B	1001	646	CAL-CBA-NAQ	-2.67	117.71	122.49
3	C	1000	NHW	O1M-C1M-CP	-2.59	118.43	122.14
3	B	1000	NHW	C13-C11-C12	-2.52	105.23	108.50
3	B	1000	NHW	O4X-C4X-C5X	-2.51	100.33	109.32
4	C	1001	646	CAJ-CAZ-CAY	-2.41	116.81	120.90
4	C	1001	646	CAV-CBB-CAU	-2.41	105.86	107.52
3	C	1000	NHW	O10-C10-C9	-2.36	104.96	110.38
3	C	1000	NHW	P2A-O3A-P1A	-2.34	126.17	132.73
4	A	1001	646	CAL-CBA-NAQ	-2.30	118.38	122.49
3	C	1000	NHW	C4A-C5A-N7A	-2.29	107.37	109.48
3	A	1000	NHW	C14-C11-C13	-2.25	104.76	109.28
3	A	1000	NHW	C7-C6-C5	-2.22	108.66	112.31
4	B	1001	646	OAE-SBF-NAT	-2.19	101.13	106.69
4	A	1001	646	OAE-SBF-NAT	-2.18	101.17	106.69
3	B	1000	NHW	O5-C5-C6	-2.16	118.25	121.98

Continued on next page...

Continued from previous page...

Mol	Chain	Res	Type	Atoms	Z	Observed(°)	Ideal(°)
4	C	1001	646	CBB-CAV-NBE	-2.14	104.31	106.87
4	A	1001	646	CAJ-CAZ-CAY	-2.09	117.34	120.90
3	C	1000	NHW	C2X-C1X-N9A	-2.02	111.21	114.29
2	B	999	DMS	O-S-C1	2.17	118.59	106.64
4	A	1001	646	CAM-CAO-NBD	2.25	116.23	110.70
2	C	999	DMS	O-S-C1	2.36	119.63	106.64
3	A	1000	NHW	O9-C9-N8	2.36	127.82	123.08
4	C	1001	646	CAH-NAQ-CBA	2.41	120.04	116.92
3	A	1000	NHW	O8A-P3X-O9A	2.52	118.69	110.58
4	A	1001	646	CBC-CAX-CLG	2.57	123.45	121.55
3	C	1000	NHW	O8A-P3X-O9A	2.62	119.01	110.58
4	C	1001	646	CAU-NAR-NBE	2.75	106.79	104.34
4	A	1001	646	CAK-CAX-CBC	2.98	124.98	121.36
4	C	1001	646	OAE-SBF-CBC	3.01	113.17	108.69
4	C	1001	646	NAQ-CBA-NBD	3.07	121.39	116.96
4	A	1001	646	CAV-CBB-CAU	3.10	109.67	107.52
3	C	1000	NHW	C13-C11-C10	3.13	115.05	109.34
3	A	1000	NHW	C13-C11-C10	3.17	115.14	109.34
3	A	1000	NHW	CP-C1M-C2M	3.19	122.45	115.59
4	B	1001	646	CAH-NAQ-CBA	3.51	121.46	116.92
4	B	1001	646	CAA-CAU-NAR	3.69	127.98	119.87
4	C	1001	646	OAD-SBF-CBC	3.88	114.46	108.69
4	B	1001	646	OAE-SBF-CBC	4.04	114.71	108.69
4	A	1001	646	CAC-NBE-NAR	4.26	125.13	118.05
4	B	1001	646	CAP-NBD-CAO	4.32	120.66	111.59
4	A	1001	646	CAH-NAQ-CBA	4.34	122.54	116.92
4	B	1001	646	CAV-CBB-CAU	4.41	110.58	107.52
4	A	1001	646	CAA-CAU-NAR	4.46	129.67	119.87
4	B	1001	646	CBC-CAX-CLG	5.10	125.32	121.55
4	A	1001	646	OAE-SBF-CBC	5.10	116.29	108.69
4	A	1001	646	CAB-CAV-CBB	5.27	137.56	130.09
4	B	1001	646	CAB-CAV-CBB	5.44	137.79	130.09
4	A	1001	646	CAP-NBD-CAO	5.64	123.42	111.59
4	C	1001	646	CAP-NBD-CAO	5.78	123.73	111.59
4	C	1001	646	CAB-CAV-CBB	5.79	138.29	130.09
4	A	1001	646	CAU-NAR-NBE	6.21	109.86	104.34
4	C	1001	646	CAX-CBC-SBF	7.66	127.99	123.30
4	B	1001	646	CAU-NAR-NBE	8.07	111.51	104.34

There are no chirality outliers.

There are no torsion outliers.

There are no ring outliers.

3 monomers are involved in 16 short contacts:

Mol	Chain	Res	Type	Clashes	Symm-Clashes
4	A	1001	646	4	0
4	B	1001	646	6	0
4	C	1001	646	6	0

5.7 Other polymers [i](#)

There are no such residues in this entry.

5.8 Polymer linkage issues [i](#)

There are no chain breaks in this entry.

6 Fit of model and data [i](#)

6.1 Protein, DNA and RNA chains [i](#)

In the following table, the column labelled ‘#RSRZ> 2’ contains the number (and percentage) of RSRZ outliers, followed by percent RSRZ outliers for the chain as percentile scores relative to all X-ray entries and entries of similar resolution. The OWAB column contains the minimum, median, 95th percentile and maximum values of the occupancy-weighted average B-factor per residue. The column labelled ‘Q< 0.9’ lists the number of (and percentage) of residues with an average occupancy less than 0.9.

Mol	Chain	Analysed	<RSRZ>	#RSRZ>2	OWAB(Å ²)	Q<0.9
1	A	385/385 (100%)	-0.52	2 (0%) 91 92	8, 14, 28, 50	23 (5%)
1	B	385/385 (100%)	-0.53	1 (0%) 94 94	9, 15, 30, 41	24 (6%)
1	C	368/385 (95%)	-0.54	0 100 100	9, 15, 28, 48	21 (5%)
All	All	1138/1155 (98%)	-0.53	3 (0%) 94 94	8, 14, 30, 50	68 (5%)

All (3) RSRZ outliers are listed below:

Mol	Chain	Res	Type	RSRZ
1	A	231	SER	4.3
1	A	230	ASN	3.1
1	B	26	ILE	2.8

6.2 Non-standard residues in protein, DNA, RNA chains [i](#)

There are no non-standard protein/DNA/RNA residues in this entry.

6.3 Carbohydrates [i](#)

There are no carbohydrates in this entry.

6.4 Ligands [i](#)

In the following table, the Atoms column lists the number of modelled atoms in the group and the number defined in the chemical component dictionary. LLDF column lists the quality of electron density of the group with respect to its neighbouring residues in protein, DNA or RNA chains. The B-factors column lists the minimum, median, 95th percentile and maximum values of B factors of atoms in the group. The column labelled ‘Q< 0.9’ lists the number of atoms with occupancy less than 0.9.

Mol	Type	Chain	Res	Atoms	RSCC	RSR	LLDF	B-factors(\AA^2)	Q<0.9
2	DMS	B	999	4/4	0.85	0.22	13.73	27,34,39,39	0
2	DMS	C	999	4/4	0.89	0.20	13.56	37,41,44,45	0
2	DMS	A	999	4/4	0.88	0.15	5.04	26,33,34,37	0
4	646	B	1001	32/32	0.95	0.12	2.33	15,26,40,45	0
4	646	C	1001	32/32	0.91	0.14	1.64	20,44,62,63	0
4	646	A	1001	32/32	0.95	0.10	1.21	18,28,37,42	0
6	MG	B	1414	1/1	0.99	0.08	0.94	24,24,24,24	0
3	NHW	A	1000	64/64	0.98	0.08	-0.09	7,11,14,16	0
3	NHW	C	1000	64/64	0.98	0.07	-0.49	6,13,16,17	0
7	CL	B	1415	1/1	1.00	0.07	-0.55	13,13,13,13	0
5	SO4	A	1414	5/5	0.97	0.08	-0.87	31,31,36,37	0
3	NHW	B	1000	64/64	0.98	0.07	-0.98	8,12,17,21	0
6	MG	A	1415	1/1	0.99	0.06	-1.80	25,25,25,25	0
7	CL	A	1416	1/1	1.00	0.05	-3.36	13,13,13,13	0
6	MG	C	1414	1/1	0.99	0.05	-3.51	22,22,22,22	0
7	CL	C	1415	1/1	1.00	0.05	-6.07	12,12,12,12	0

6.5 Other polymers [i](#)

There are no such residues in this entry.