



# wwPDB X-ray Structure Validation Summary Report ⓘ

Jan 31, 2016 – 11:52 PM GMT

PDB ID : 1YQ4  
Title : Avian respiratory complex ii with 3-nitropropionate and ubiquinone  
Authors : Huang, L.; Sun, G.; Cobessi, D.; Wang, A.; Shen, J.T.; Tung, E.Y.; Anderson, V.E.; Berry, E.A.  
Deposited on : 2005-02-01  
Resolution : 2.33 Å(reported)

This is a wwPDB X-ray Structure Validation Summary Report for a publicly released PDB entry.  
We welcome your comments at [validation@mail.wwpdb.org](mailto:validation@mail.wwpdb.org)  
A user guide is available at  
<http://wwpdb.org/validation/2016/XrayValidationReportHelp>  
with specific help available everywhere you see the ⓘ symbol.

---

The following versions of software and data (see [references ⓘ](#)) were used in the production of this report:

MolProbity : 4.02b-467  
Mogul : 1.7 (RC4), CSD as536be (2015)  
Xtriage (Phenix) : 1.9-1692  
EDS : rb-20026688  
Percentile statistics : 20151230.v01 (using entries in the PDB archive December 30th 2015)  
Refmac : 5.8.0135  
CCP4 : 6.5.0  
Ideal geometry (proteins) : Engh & Huber (2001)  
Ideal geometry (DNA, RNA) : Parkinson et al. (1996)  
Validation Pipeline (wwPDB-VP) : trunk26865

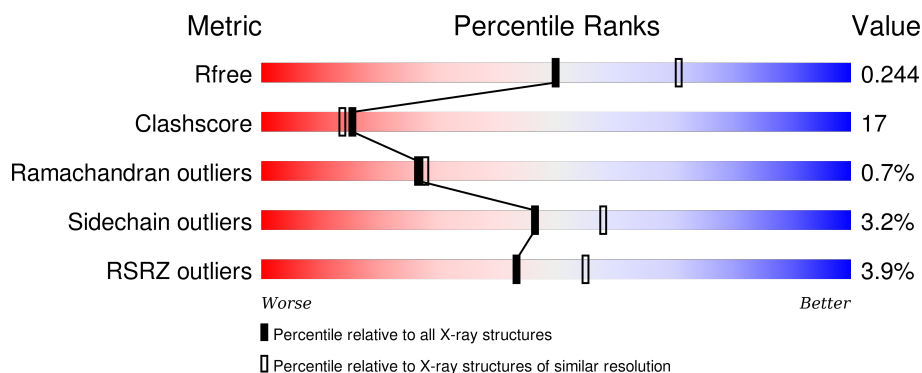
# 1 Overall quality at a glance ⓘ

The following experimental techniques were used to determine the structure:

## *X-RAY DIFFRACTION*

The reported resolution of this entry is 2.33 Å.

Percentile scores (ranging between 0-100) for global validation metrics of the entry are shown in the following graphic. The table shows the number of entries on which the scores are based.



Metric	Whole archive (#Entries)	Similar resolution (#Entries, resolution range(Å))
$R_{free}$	91344	1406 (2.36-2.32)
Clashscore	102246	1509 (2.36-2.32)
Ramachandran outliers	100387	1490 (2.36-2.32)
Sidechain outliers	100360	1491 (2.36-2.32)
RSRZ outliers	91569	1412 (2.36-2.32)

The table below summarises the geometric issues observed across the polymeric chains and their fit to the electron density. The red, orange, yellow and green segments on the lower bar indicate the fraction of residues that contain outliers for  $\geq 3$ , 2, 1 and 0 types of geometric quality criteria. A grey segment represents the fraction of residues that are not modelled. The numeric value for each fraction is indicated below the corresponding segment, with a dot representing fractions  $\leq 5\%$ . The upper red bar (where present) indicates the fraction of residues that have poor fit to the electron density. The numeric value is given above the bar.

Mol	Chain	Length	Quality of chain
1	A	621	<div> <div>4%</div> <div>66%</div> <div>31%</div> <div>..</div> </div>
2	B	252	<div> <div>6%</div> <div>60%</div> <div>33%</div> <div>..</div> </div>
3	C	141	<div> <div>2%</div> <div>64%</div> <div>33%</div> <div>..</div> </div>
4	D	103	<div> <div>2%</div> <div>64%</div> <div>33%</div> <div>..</div> </div>

The following table lists non-polymeric compounds, carbohydrate monomers and non-standard

residues in protein, DNA, RNA chains that are outliers for geometric or electron-density-fit criteria:

Mol	Type	Chain	Res	Chirality	Geometry	Clashes	Electron density
12	UQ	C	144	-	-	-	X
13	PEE	C	145	-	-	-	X
13	PEE	D	104	-	-	-	X
5	BHG	C	142	X	-	-	X

## 2 Entry composition

There are 15 unique types of molecules in this entry. The entry contains 9291 atoms, of which 0 are hydrogens and 0 are deuteriums.

In the tables below, the ZeroOcc column contains the number of atoms modelled with zero occupancy, the AltConf column contains the number of residues with at least one atom in alternate conformation and the Trace column contains the number of residues modelled with at most 2 atoms.

- Molecule 1 is a protein called Succinate dehydrogenase flavoprotein subunit.

Mol	Chain	Residues	Atoms					ZeroOcc	AltConf	Trace
1	A	614	Total	C	N	O	S	0	0	0
			4736	2962	845	900	29			

- Molecule 2 is a protein called succinate dehydrogenase Ip subunit.

Mol	Chain	Residues	Atoms					ZeroOcc	AltConf	Trace
2	B	242	Total	C	N	O	S	0	0	0
			1934	1222	327	363	22			

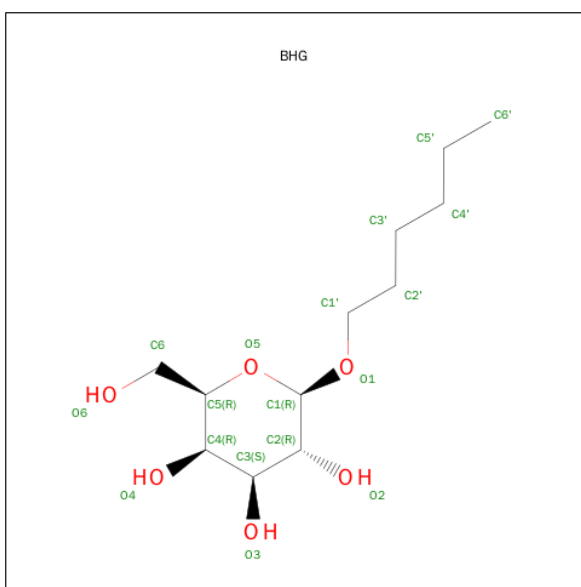
- Molecule 3 is a protein called SUCCINATE DEHYDROGENASE CYTOCHROME B, LARGE SUBUNIT.

Mol	Chain	Residues	Atoms					ZeroOcc	AltConf	Trace
3	C	140	Total	C	N	O	S	0	0	1
			1074	706	179	185	4			

- Molecule 4 is a protein called SUCCINATE DEHYDROGENASE CYTOCHROME B, SMALL SUBUNIT.

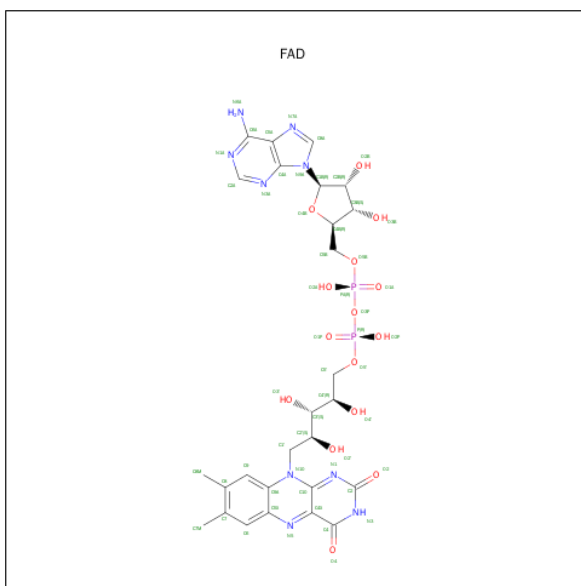
Mol	Chain	Residues	Atoms					ZeroOcc	AltConf	Trace
4	D	102	Total	C	N	O	S	0	0	0
			770	508	122	137	3			

- Molecule 5 is SUGAR (2-HEXYLOXY-6-HYDROXYMETHYL-TETRAHYDRO-PYRAN-3,4,5-TRIOL) (three-letter code: BHG) (formula: C<sub>12</sub>H<sub>24</sub>O<sub>6</sub>).



Mol	Chain	Residues	Atoms			ZeroOcc	AltConf
5	C	1	Total	C	O	0	0
			18	12	6		

- Molecule 6 is FLAVIN-ADENINE DINUCLEOTIDE (three-letter code: FAD) (formula:  $C_{27}H_{33}N_9O_{15}P_2$ ).



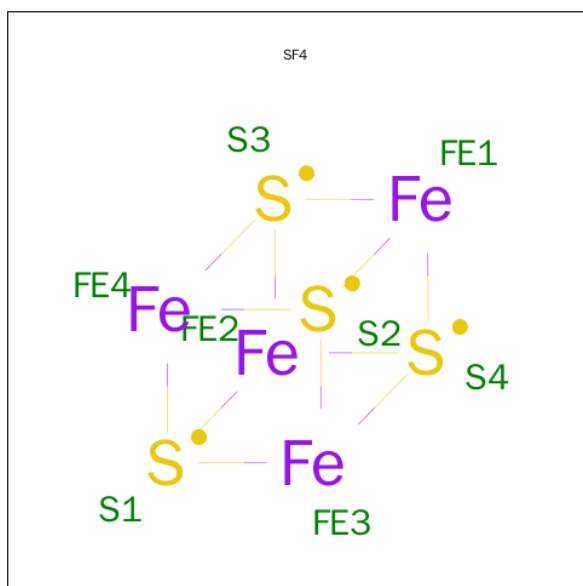
Mol	Chain	Residues	Atoms					ZeroOcc	AltConf
6	A	1	Total	C	N	O	P	0	0
			53	27	9	15	2		

- Molecule 7 is FE2/S2 (INORGANIC) CLUSTER (three-letter code: FES) (formula:  $Fe_2S_2$ ).



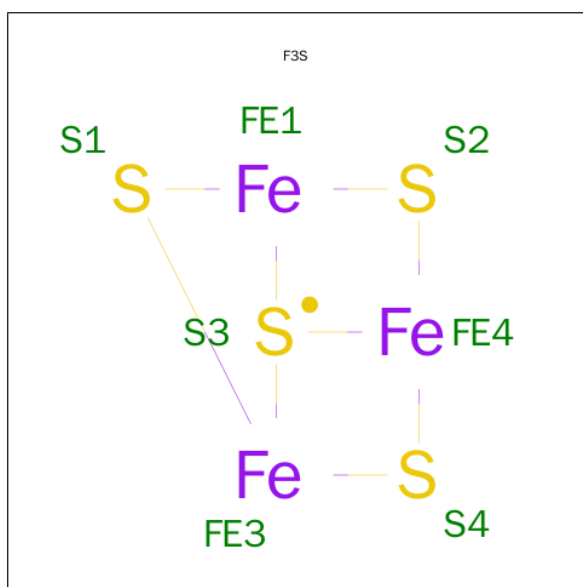
Mol	Chain	Residues	Atoms			ZeroOcc	AltConf
7	B	1	Total	Fe	S	0	0
			4	2	2		

- Molecule 8 is IRON/SULFUR CLUSTER (three-letter code: SF4) (formula:  $\text{Fe}_4\text{S}_4$ ).



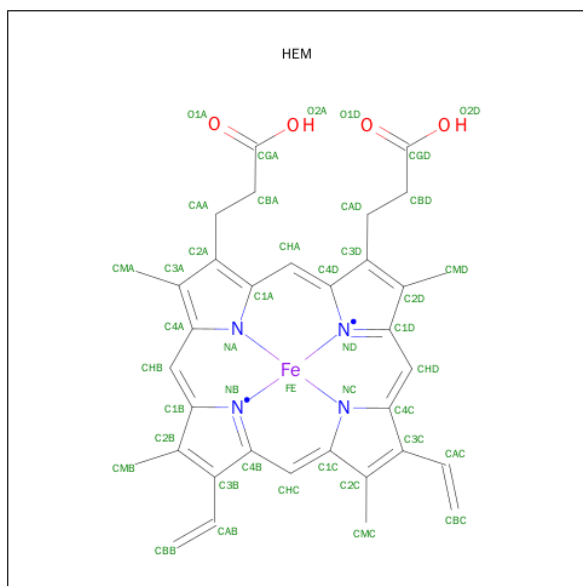
Mol	Chain	Residues	Atoms			ZeroOcc	AltConf
8	B	1	Total	Fe	S	0	0
			8	4	4		

- Molecule 9 is FE3-S4 CLUSTER (three-letter code: F3S) (formula:  $\text{Fe}_3\text{S}_4$ ).



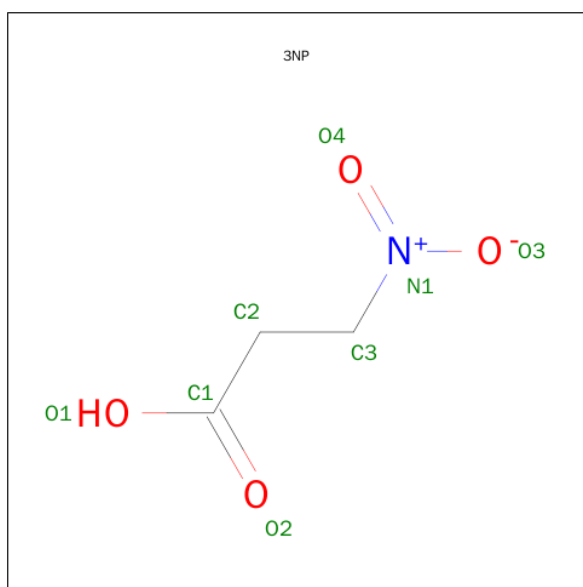
Mol	Chain	Residues	Atoms				ZeroOcc	AltConf
9	B	1	Total	Fe	S		0	0
			7	3	4			

- Molecule 10 is PROTOPORPHYRIN IX CONTAINING FE (three-letter code: HEM) (formula:  $C_{34}H_{32}FeN_4O_4$ ).



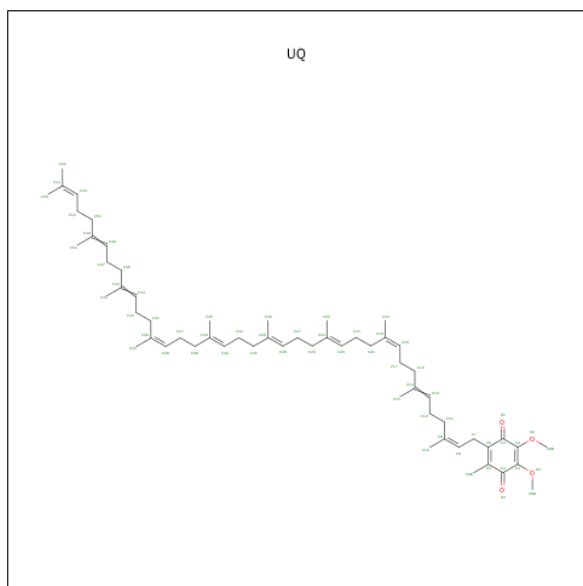
Mol	Chain	Residues	Atoms				ZeroOcc	AltConf
10	C	1	Total	C	Fe	N	O	0
			41	32	1	4	4	

- Molecule 11 is 3-NITROPROPANOIC ACID (three-letter code: 3NP) (formula:  $C_3H_5NO_4$ ).



Mol	Chain	Residues	Atoms				ZeroOcc	AltConf
11	A	1	Total	C	N	O	0	0
			6	3	1	2		

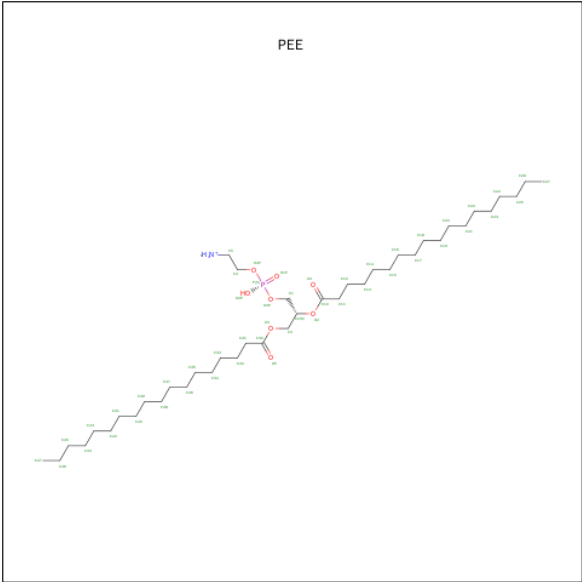
- Molecule 12 is COENZYME Q10, (2Z,6E,10Z,14E,18E,22E,26Z)-ISOMER (three-letter code: UQ) (formula: C<sub>59</sub>H<sub>90</sub>O<sub>4</sub>).



Mol	Chain	Residues	Atoms			ZeroOcc	AltConf
12	C	1	Total	C	O	0	0
			14	10	4		

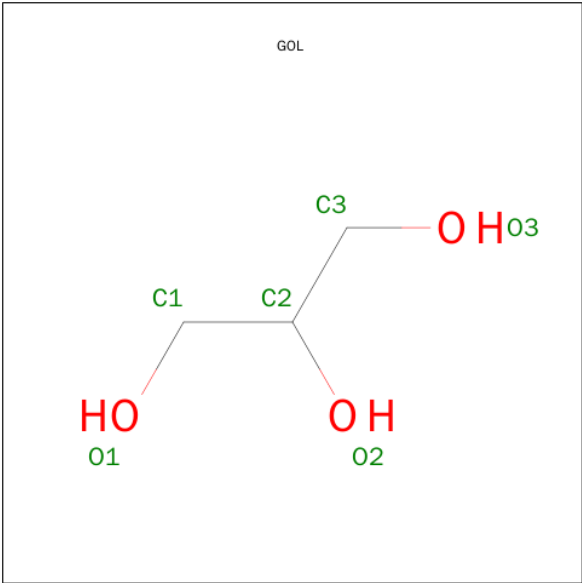
- Molecule 13 is 1,2-DIOLEOYL-SN-GLYCERO-3-PHOSPHOETHANOLAMINE (three-letter code: PEE) (formula: C<sub>41</sub>H<sub>83</sub>NO<sub>8</sub>P).





Mol	Chain	Residues	Atoms			ZeroOcc	AltConf
13	D	1	Total	C		0	0
			24	24			
13	C	1	Total	C	O	0	0
			21	19	2		

- Molecule 14 is GLYCEROL (three-letter code: GOL) (formula: C<sub>3</sub>H<sub>8</sub>O<sub>3</sub>).



Mol	Chain	Residues	Atoms			ZeroOcc	AltConf
14	B	1	Total	C	O	0	0
			6	3	3		

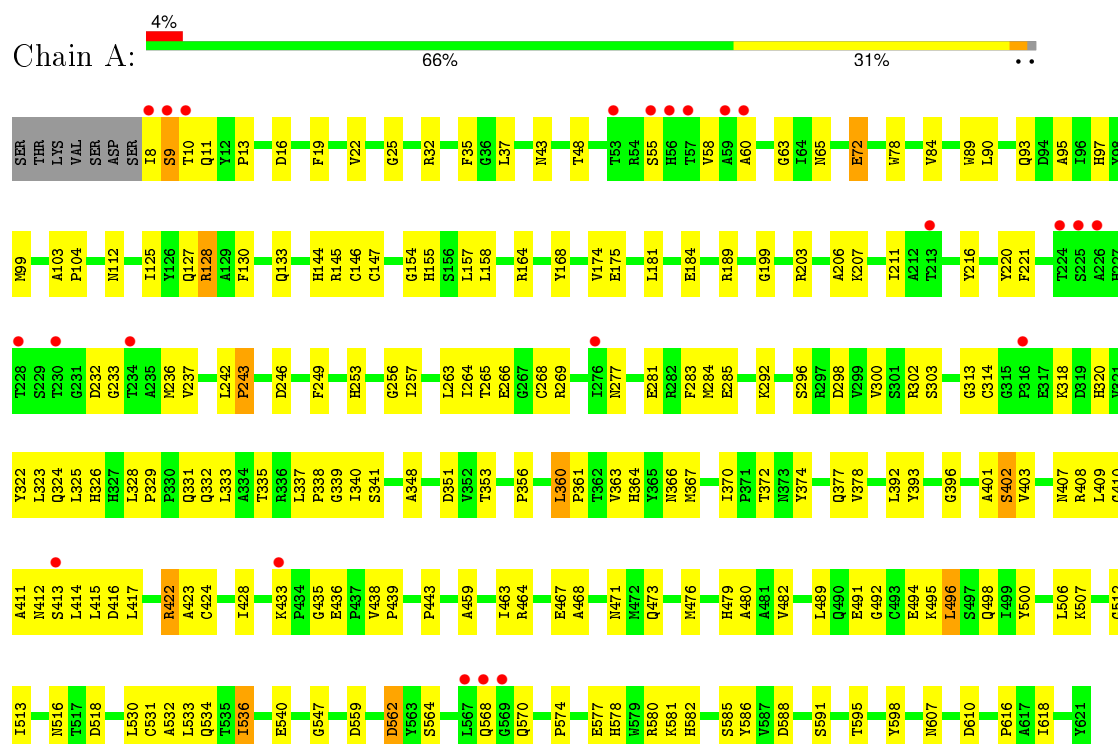
- Molecule 15 is water.

Mol	Chain	Residues	Atoms		ZeroOcc	AltConf
15	A	280	Total 280	O 280	0	0
15	B	159	Total 159	O 159	0	0
15	C	72	Total 72	O 72	0	0
15	D	64	Total 64	O 64	0	0

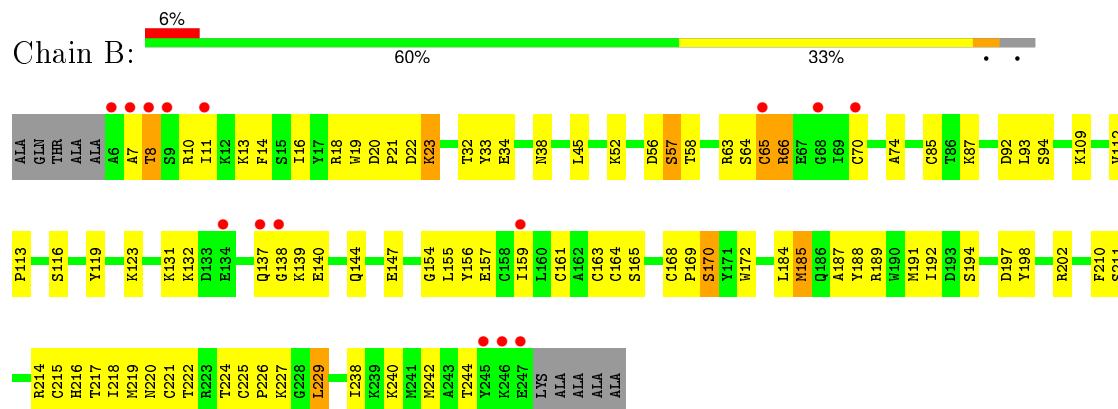
### 3 Residue-property plots

These plots are drawn for all protein, RNA and DNA chains in the entry. The first graphic for a chain summarises the proportions of errors displayed in the second graphic. The second graphic shows the sequence view annotated by issues in geometry and electron density. Residues are color-coded according to the number of geometric quality criteria for which they contain at least one outlier: green = 0, yellow = 1, orange = 2 and red = 3 or more. A red dot above a residue indicates a poor fit to the electron density (RSRZ > 2). Stretches of 2 or more consecutive residues without any outlier are shown as a green connector. Residues present in the sample, but not in the model, are shown in grey.

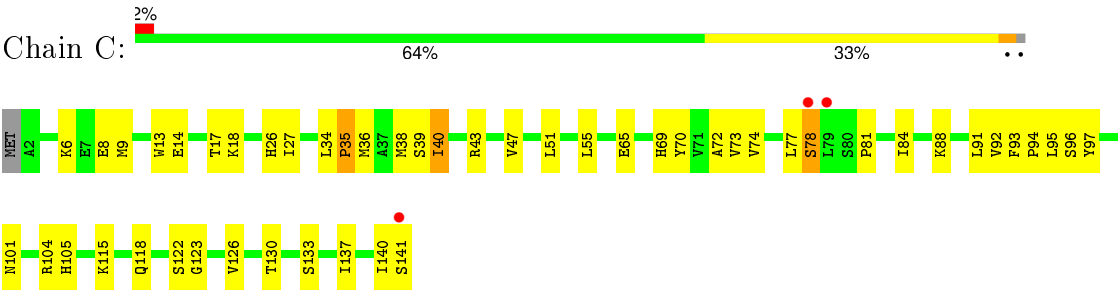
- Molecule 1: Succinate dehydrogenase flavoprotein subunit



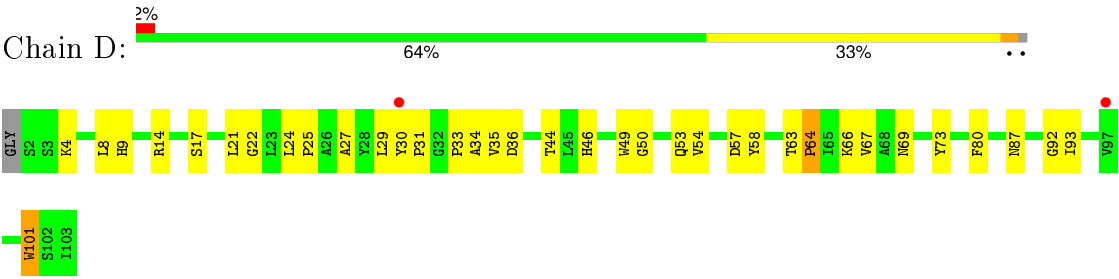
- Molecule 2: succinate dehydrogenase Ip subunit



- Molecule 3: SUCCINATE DEHYDROGENASE CYTOCHROME B, LARGE SUBUNIT



• Molecule 4: SUCCINATE DEHYDROGENASE CYTOCHROME B, SMALL SUBUNIT



## 4 Data and refinement statistics

Property	Value	Source
Space group	P 21 21 21	Depositor
Cell constants a, b, c, $\alpha$ , $\beta$ , $\gamma$	69.59 Å 83.49 Å 288.59 Å 90.00° 90.00° 90.00°	Depositor
Resolution (Å)	56.38 – 2.33 47.48 – 2.20	Depositor EDS
% Data completeness (in resolution range)	79.4 (56.38-2.33) 90.1 (47.48-2.20)	Depositor EDS
$R_{merge}$	(Not available)	Depositor
$R_{sym}$	0.11	Depositor
$\langle I/\sigma(I) \rangle$ <sup>1</sup>	2.02 (at 2.20 Å)	Xtriage
Refinement program	CNS 1.1	Depositor
R, $R_{free}$	0.202 , 0.252 0.196 , 0.244	Depositor DCC
$R_{free}$ test set	3332 reflections (5.08%)	DCC
Wilson B-factor (Å <sup>2</sup> )	42.5	Xtriage
Anisotropy	0.414	Xtriage
Bulk solvent $k_{sol}$ (e/Å <sup>3</sup> ), $B_{sol}$ (Å <sup>2</sup> )	0.30 , 54.8	EDS
Estimated twinning fraction	No twinning to report.	Xtriage
L-test for twinning <sup>2</sup>	$\langle  L  \rangle = 0.41$ , $\langle L^2 \rangle = 0.24$	Xtriage
Outliers	1 of 77928 reflections (0.001%)	Xtriage
$F_o, F_c$ correlation	0.95	EDS
Total number of atoms	9291	wwPDB-VP
Average B, all atoms (Å <sup>2</sup> )	49.0	wwPDB-VP

Xtriage's analysis on translational NCS is as follows: *The largest off-origin peak in the Patterson function is 2.74% of the height of the origin peak. No significant pseudotranslation is detected.*

<sup>1</sup>Intensities estimated from amplitudes.

<sup>2</sup>Theoretical values of  $\langle |L| \rangle$ ,  $\langle L^2 \rangle$  for acentric reflections are 0.5, 0.375 respectively for untwinned datasets, and 0.333, 0.2 for perfectly twinned datasets.

## 5 Model quality ⓘ

### 5.1 Standard geometry ⓘ

Bond lengths and bond angles in the following residue types are not validated in this section: GOL, SF4, UQ, BHG, F3S, FES, 3NP, PEE, HEM, FAD

The Z score for a bond length (or angle) is the number of standard deviations the observed value is removed from the expected value. A bond length (or angle) with  $|Z| > 5$  is considered an outlier worth inspection. RMSZ is the root-mean-square of all Z scores of the bond lengths (or angles).

Mol	Chain	Bond lengths		Bond angles	
		RMSZ	$\# Z  > 5$	RMSZ	$\# Z  > 5$
1	A	0.62	1/4837 (0.0%)	0.83	4/6550 (0.1%)
2	B	0.73	2/1976 (0.1%)	0.83	1/2666 (0.0%)
3	C	0.69	0/1103	0.76	0/1501
4	D	0.67	0/793	0.73	0/1089
All	All	0.66	3/8709 (0.0%)	0.81	5/11806 (0.0%)

All (3) bond length outliers are listed below:

Mol	Chain	Res	Type	Atoms	Z	Observed(Å)	Ideal(Å)
2	B	185	MET	SD-CE	6.00	2.11	1.77
1	A	531	CYS	CB-SG	-5.84	1.72	1.81
2	B	215	CYS	CB-SG	5.37	1.91	1.82

All (5) bond angle outliers are listed below:

Mol	Chain	Res	Type	Atoms	Z	Observed(°)	Ideal(°)
1	A	422	ARG	NE-CZ-NH1	7.38	123.99	120.30
1	A	256	GLY	N-CA-C	-5.86	98.46	113.10
1	A	422	ARG	NE-CZ-NH2	-5.60	117.50	120.30
2	B	23	LYS	N-CA-C	-5.21	96.93	111.00
1	A	408	ARG	NE-CZ-NH2	-5.03	117.78	120.30

There are no chirality outliers.

There are no planarity outliers.

### 5.2 Too-close contacts ⓘ

In the following table, the Non-H and H(model) columns list the number of non-hydrogen atoms and hydrogen atoms in the chain respectively. The H(added) column lists the number of hydrogen

atoms added and optimized by MolProbity. The Clashes column lists the number of clashes within the asymmetric unit, whereas Symm-Clashes lists symmetry related clashes.

Mol	Chain	Non-H	H(model)	H(added)	Clashes	Symm-Clashes
1	A	4736	0	4614	157	0
2	B	1934	0	1920	76	0
3	C	1074	0	1115	46	0
4	D	770	0	763	33	0
5	C	18	0	24	0	0
6	A	53	0	29	7	0
7	B	4	0	0	0	0
8	B	8	0	0	0	0
9	B	7	0	0	0	0
10	C	41	0	24	0	0
11	A	6	0	0	0	0
12	C	14	0	9	10	0
13	C	21	0	35	1	0
13	D	24	0	40	0	0
14	B	6	0	8	0	0
15	A	280	0	0	3	0
15	B	159	0	0	4	0
15	C	72	0	0	6	0
15	D	64	0	0	4	0
All	All	9291	0	8581	299	0

The all-atom clashscore is defined as the number of clashes found per 1000 atoms (including hydrogen atoms). The all-atom clashscore for this structure is 17.

The worst 5 of 299 close contacts within the same asymmetric unit are listed below, sorted by their clash magnitude.

Atom-1	Atom-2	Interatomic distance (Å)	Clash overlap (Å)
2:B:185:MET:CE	2:B:185:MET:SD	2.11	1.39
2:B:240:LYS:O	2:B:244:THR:HG23	1.71	0.88
1:A:277:ASN:HD21	1:A:281:GLU:HB3	1.39	0.85
1:A:401:ALA:N	1:A:402:SER:HA	1.91	0.85
1:A:181:LEU:HD21	1:A:211:ILE:HD11	1.57	0.84

There are no symmetry-related clashes.

## 5.3 Torsion angles ⓘ

### 5.3.1 Protein backbone ⓘ

In the following table, the Percentiles column shows the percent Ramachandran outliers of the chain as a percentile score with respect to all X-ray entries followed by that with respect to entries of similar resolution.

The Analysed column shows the number of residues for which the backbone conformation was analysed, and the total number of residues.

Mol	Chain	Analysed	Favoured	Allowed	Outliers	Percentiles	
1	A	612/621 (99%)	569 (93%)	39 (6%)	4 (1%)	26	28
2	B	240/252 (95%)	227 (95%)	10 (4%)	3 (1%)	15	13
3	C	138/141 (98%)	130 (94%)	7 (5%)	1 (1%)	26	28
4	D	100/103 (97%)	94 (94%)	6 (6%)	0	100	100
All	All	1090/1117 (98%)	1020 (94%)	62 (6%)	8 (1%)	26	28

5 of 8 Ramachandran outliers are listed below:

Mol	Chain	Res	Type
1	A	265	THR
2	B	8	THR
3	C	78	SER
1	A	568	GLN
2	B	57	SER

### 5.3.2 Protein sidechains ⓘ

In the following table, the Percentiles column shows the percent sidechain outliers of the chain as a percentile score with respect to all X-ray entries followed by that with respect to entries of similar resolution.

The Analysed column shows the number of residues for which the sidechain conformation was analysed, and the total number of residues.

Mol	Chain	Analysed	Rotameric	Outliers	Percentiles	
1	A	498/506 (98%)	484 (97%)	14 (3%)	51	64
2	B	215/219 (98%)	207 (96%)	8 (4%)	41	53
3	C	117/119 (98%)	114 (97%)	3 (3%)	54	66
4	D	78/79 (99%)	74 (95%)	4 (5%)	29	36
All	All	908/923 (98%)	879 (97%)	29 (3%)	46	58



5 of 29 residues with a non-rotameric sidechain are listed below:

Mol	Chain	Res	Type
1	A	570	GLN
2	B	66	ARG
4	D	64	PRO
2	B	63	ARG
2	B	116	SER

Some sidechains can be flipped to improve hydrogen bonding and reduce clashes. 5 of 18 such sidechains are listed below:

Mol	Chain	Res	Type
1	A	383	ASN
1	A	534	GLN
3	C	101	ASN
1	A	331	GLN
1	A	366	ASN

### 5.3.3 RNA ⓘ

There are no RNA molecules in this entry.

## 5.4 Non-standard residues in protein, DNA, RNA chains ⓘ

There are no non-standard protein/DNA/RNA residues in this entry.

## 5.5 Carbohydrates ⓘ

There are no carbohydrates in this entry.

## 5.6 Ligand geometry ⓘ

11 ligands are modelled in this entry.

In the following table, the Counts columns list the number of bonds (or angles) for which Mogul statistics could be retrieved, the number of bonds (or angles) that are observed in the model and the number of bonds (or angles) that are defined in the chemical component dictionary. The Link column lists molecule types, if any, to which the group is linked. The Z score for a bond length (or angle) is the number of standard deviations the observed value is removed from the expected value. A bond length (or angle) with  $|Z| > 2$  is considered an outlier worth inspection. RMSZ is the root-mean-square of all Z scores of the bond lengths (or angles).

Mol	Type	Chain	Res	Link	Bond lengths			Bond angles		
					Counts	RMSZ	# Z  > 2	Counts	RMSZ	# Z  > 2
6	FAD	A	1001	1	48,58,58	2.28	17 (35%)	54,89,89	2.62	16 (29%)
11	3NP	A	1002	1	2,5,7	4.22	2 (100%)	1,5,8	11.54	1 (100%)
7	FES	B	1002	2	0,4,4	0.00	-	0,4,4	0.00	-
8	SF4	B	1003	2	0,12,12	0.00	-	0,24,24	0.00	-
9	F3S	B	1004	2	0,9,9	0.00	-	0,15,15	0.00	-
14	GOL	B	1005	-	5,5,5	1.27	0	5,5,5	0.64	0
5	BHG	C	142	-	18,18,18	1.93	3 (16%)	23,23,23	0.98	0
10	HEM	C	143	3,4	29,48,50	2.32	8 (27%)	24,80,82	2.37	9 (37%)
12	UQ	C	144	-	14,14,63	1.88	6 (42%)	18,20,79	0.41	0
13	PEE	C	145	-	16,19,50	1.11	2 (12%)	16,19,55	1.24	4 (25%)
13	PEE	D	104	-	22,22,50	0.88	1 (4%)	20,20,55	0.98	2 (10%)

In the following table, the Chirals column lists the number of chiral outliers, the number of chiral centers analysed, the number of these observed in the model and the number defined in the chemical component dictionary. Similar counts are reported in the Torsion and Rings columns. '-' means no outliers of that kind were identified.

Mol	Type	Chain	Res	Link	Chirals	Torsions	Rings
6	FAD	A	1001	1	-	0/30/50/50	0/6/6/6
11	3NP	A	1002	1	-	0/1/3/5	0/0/0/0
7	FES	B	1002	2	-	0/0/4/4	0/1/1/1
8	SF4	B	1003	2	-	0/0/48/48	0/6/5/5
9	F3S	B	1004	2	-	0/0/24/24	0/0/3/3
14	GOL	B	1005	-	-	0/4/4/4	0/0/0/0
5	BHG	C	142	-	1/1/5/5	0/9/29/29	0/1/1/1
10	HEM	C	143	3,4	-	0/6/50/54	0/0/8/8
12	UQ	C	144	-	-	0/4/28/87	0/1/1/1
13	PEE	C	145	-	-	0/15/17/54	0/0/0/0
13	PEE	D	104	-	-	0/18/18/54	0/0/0/0

The worst 5 of 39 bond length outliers are listed below:

Mol	Chain	Res	Type	Atoms	Z	Observed(Å)	Ideal(Å)
10	C	143	HEM	C2D-C3D	-6.01	1.36	1.54
6	A	1001	FAD	PA-O2A	-5.46	1.31	1.54
10	C	143	HEM	CAB-C3B	-5.45	1.40	1.53
11	A	1002	3NP	C3-C2	-4.71	1.31	1.50
6	A	1001	FAD	PA-O1A	-4.71	1.34	1.51

The worst 5 of 32 bond angle outliers are listed below:

Mol	Chain	Res	Type	Atoms	Z	Observed(°)	Ideal(°)
6	A	1001	FAD	N3A-C2A-N1A	-12.32	119.46	128.89
6	A	1001	FAD	C4-C4X-C10	-4.37	117.14	119.94
6	A	1001	FAD	C4X-C10-N10	-4.12	118.09	120.52
10	C	143	HEM	CAA-C2A-C1A	-3.47	123.24	127.01
6	A	1001	FAD	C5X-C9A-N10	-3.04	115.31	117.62

All (1) chirality outliers are listed below:

Mol	Chain	Res	Type	Atom
5	C	142	BHG	C4

There are no torsion outliers.

There are no ring outliers.

3 monomers are involved in 18 short contacts:

Mol	Chain	Res	Type	Clashes	Symm-Clashes
6	A	1001	FAD	7	0
12	C	144	UQ	10	0
13	C	145	PEE	1	0

## 5.7 Other polymers [i](#)

There are no such residues in this entry.

## 5.8 Polymer linkage issues [i](#)

There are no chain breaks in this entry.

## 6 Fit of model and data [i](#)

### 6.1 Protein, DNA and RNA chains [i](#)

In the following table, the column labelled ‘#RSRZ> 2’ contains the number (and percentage) of RSRZ outliers, followed by percent RSRZ outliers for the chain as percentile scores relative to all X-ray entries and entries of similar resolution. The OWAB column contains the minimum, median, 95<sup>th</sup> percentile and maximum values of the occupancy-weighted average B-factor per residue. The column labelled ‘Q< 0.9’ lists the number of (and percentage) of residues with an average occupancy less than 0.9.

Mol	Chain	Analysed	<RSRZ>	#RSRZ>2	OWAB(Å <sup>2</sup> )	Q<0.9
1	A	614/621 (98%)	-0.08	23 (3%) 45 57	26, 47, 74, 152	0
2	B	242/252 (96%)	-0.03	15 (6%) 24 35	24, 40, 84, 124	0
3	C	140/141 (99%)	-0.43	3 (2%) 67 78	25, 45, 76, 91	0
4	D	102/103 (99%)	-0.42	2 (1%) 68 79	29, 42, 68, 84	0
All	All	1098/1117 (98%)	-0.15	43 (3%) 43 55	24, 45, 75, 152	0

The worst 5 of 43 RSRZ outliers are listed below:

Mol	Chain	Res	Type	RSRZ
2	B	7	ALA	6.7
1	A	8	ILE	5.9
2	B	6	ALA	5.9
1	A	9	SER	5.7
2	B	8	THR	5.3

### 6.2 Non-standard residues in protein, DNA, RNA chains [i](#)

There are no non-standard protein/DNA/RNA residues in this entry.

### 6.3 Carbohydrates [i](#)

There are no carbohydrates in this entry.

### 6.4 Ligands [i](#)

In the following table, the Atoms column lists the number of modelled atoms in the group and the number defined in the chemical component dictionary. LLDF column lists the quality of electron density of the group with respect to its neighbouring residues in protein, DNA or RNA chains. The B-factors column lists the minimum, median, 95<sup>th</sup> percentile and maximum values of B factors

of atoms in the group. The column labelled 'Q< 0.9' lists the number of atoms with occupancy less than 0.9.

Mol	Type	Chain	Res	Atoms	RSCC	RSR	LLDF	B-factors( $\text{\AA}^2$ )	Q<0.9
12	UQ	C	144	14/63	0.84	0.44	12.13	90,99,109,113	0
5	BHG	C	142	18/18	0.93	0.15	4.19	38,48,61,63	0
13	PEE	C	145	21/51	0.84	0.23	3.42	45,74,88,92	0
13	PEE	D	104	24/51	0.80	0.28	2.98	53,72,98,99	0
10	HEM	C	143	41/43	0.98	0.10	0.40	29,41,65,67	0
11	3NP	A	1002	6/8	0.98	0.19	0.28	38,39,44,47	0
6	FAD	A	1001	53/53	0.98	0.23	0.27	18,32,43,52	0
9	F3S	B	1004	7/7	0.99	0.11	-0.28	26,27,28,30	0
8	SF4	B	1003	8/8	0.99	0.14	-0.63	32,34,38,38	0
7	FES	B	1002	4/4	1.00	0.15	-1.62	30,32,34,37	0
14	GOL	B	1005	6/6	0.31	0.59	-	156,160,161,162	0

## 6.5 Other polymers [i](#)

There are no such residues in this entry.