



wwPDB X-ray Structure Validation Summary Report ⓘ

Jul 21, 2016 – 07:43 PM EDT

PDB ID : 4YWG
Title : Crystal structure of 830A in complex with V1V2
Authors : Pan, R.; Kong, X.
Deposited on : 2015-03-20
Resolution : 3.00 Å(reported)

This is a wwPDB X-ray Structure Validation Summary Report for a publicly released PDB entry.
We welcome your comments at validation@mail.wwpdb.org
A user guide is available at
<http://wwpdb.org/validation/2016/XrayValidationReportHelp>
with specific help available everywhere you see the ⓘ symbol.

The following versions of software and data (see [references ⓘ](#)) were used in the production of this report:

MolProbity : 4.02b-467
Mogul : 1.7.1 (RC1), CSD as537be (2016)
Xtriage (Phenix) : 1.9-1692
EDS : rb-20027790
Percentile statistics : 20151230.v01 (using entries in the PDB archive December 30th 2015)
Refmac : 5.8.0135
CCP4 : 6.5.0
Ideal geometry (proteins) : Engh & Huber (2001)
Ideal geometry (DNA, RNA) : Parkinson et al. (1996)
Validation Pipeline (wwPDB-VP) : rb-20027790

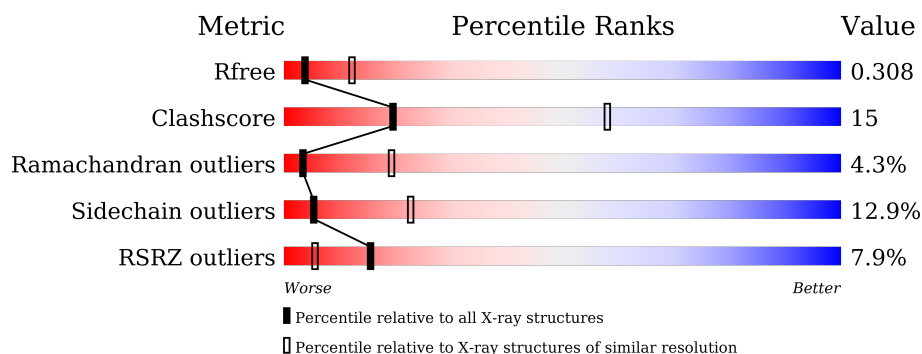
1 Overall quality at a glance ⓘ

The following experimental techniques were used to determine the structure:

X-RAY DIFFRACTION

The reported resolution of this entry is 3.00 Å.

Percentile scores (ranging between 0-100) for global validation metrics of the entry are shown in the following graphic. The table shows the number of entries on which the scores are based.



Metric	Whole archive (#Entries)	Similar resolution (#Entries, resolution range(Å))
R_{free}	91344	1578 (3.00-3.00)
Clashscore	102246	1912 (3.00-3.00)
Ramachandran outliers	100387	1853 (3.00-3.00)
Sidechain outliers	100360	1856 (3.00-3.00)
RSRZ outliers	91569	1592 (3.00-3.00)

The table below summarises the geometric issues observed across the polymeric chains and their fit to the electron density. The red, orange, yellow and green segments on the lower bar indicate the fraction of residues that contain outliers for ≥ 3 , 2, 1 and 0 types of geometric quality criteria. A grey segment represents the fraction of residues that are not modelled. The numeric value for each fraction is indicated below the corresponding segment, with a dot representing fractions $\leq 5\%$. The upper red bar (where present) indicates the fraction of residues that have poor fit to the electron density. The numeric value is given above the bar.

Mol	Chain	Length	Quality of chain
1	L	216	<div> <div>15%</div> <div>51%</div> <div>36%</div> <div>6%</div> <div>5%</div> </div>
1	M	216	<div> <div>2%</div> <div>60%</div> <div>34%</div> <div>6%</div> </div>
2	H	226	<div> <div>2%</div> <div>58%</div> <div>30%</div> <div>5%</div> <div>7%</div> </div>
2	I	226	<div> <div>2%</div> <div>54%</div> <div>41%</div> <div>5%</div> </div>
3	G	124	<div> <div>2%</div> <div>52%</div> <div>24%</div> <div>6%</div> <div>17%</div> </div>
3	Q	124	<div> <div>27%</div> <div>48%</div> <div>27%</div> <div>24%</div> </div>

The following table lists non-polymeric compounds, carbohydrate monomers and non-standard residues in protein, DNA, RNA chains that are outliers for geometric or electron-density-fit criteria:

Mol	Type	Chain	Res	Chirality	Geometry	Clashes	Electron density
4	NAG	G	301	-	-	-	X
4	NAG	G	303	-	-	-	X

2 Entry composition

There are 4 unique types of molecules in this entry. The entry contains 8149 atoms, of which 0 are hydrogens and 0 are deuteriums.

In the tables below, the ZeroOcc column contains the number of atoms modelled with zero occupancy, the AltConf column contains the number of residues with at least one atom in alternate conformation and the Trace column contains the number of residues modelled with at most 2 atoms.

- Molecule 1 is a protein called Light chain of anti-HIV-1 gp120 V1V2 antibody 830A.

Mol	Chain	Residues	Atoms					ZeroOcc	AltConf	Trace
1	L	206	Total	C	N	O	S	0	0	0
			1589	994	273	316	6			
1	M	215	Total	C	N	O	S	0	0	0
			1659	1037	288	328	6			

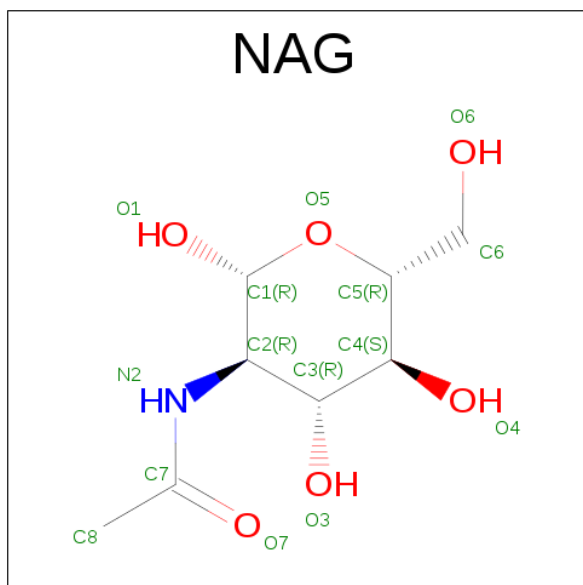
- Molecule 2 is a protein called Heavy chain of anti-HIV-1 gp120 V1V2 antibody 830A.

Mol	Chain	Residues	Atoms					ZeroOcc	AltConf	Trace
2	H	210	Total	C	N	O	S	0	0	0
			1590	1015	260	311	4			
2	I	226	Total	C	N	O	S	0	0	0
			1691	1075	277	335	4			

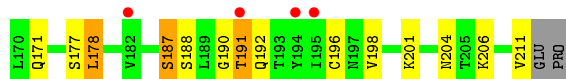
- Molecule 3 is a protein called Scaffold HIV-1 gp120 V1V2 region derived from strain ZM109.

Mol	Chain	Residues	Atoms					ZeroOcc	AltConf	Trace
3	G	103	Total	C	N	O	S	0	0	0
			800	500	131	164	5			
3	Q	94	Total	C	N	O	S	0	0	0
			736	462	119	151	4			

- Molecule 4 is N-ACETYL-D-GLUCOSAMINE (three-letter code: NAG) (formula: C₈H₁₅NO₆).



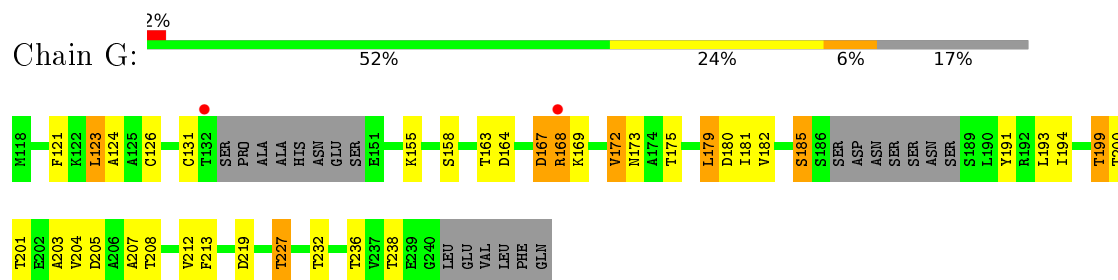
Mol	Chain	Residues	Atoms				ZeroOcc	AltConf
4	G	1	Total	C	N	O	0	0
			14	8	1	5		
4	G	1	Total	C	N	O	0	0
			14	8	1	5		
4	G	1	Total	C	N	O	0	0
			14	8	1	5		
4	Q	1	Total	C	N	O	0	0
			14	8	1	5		
4	Q	1	Total	C	N	O	0	0
			14	8	1	5		
4	Q	1	Total	C	N	O	0	0
			14	8	1	5		



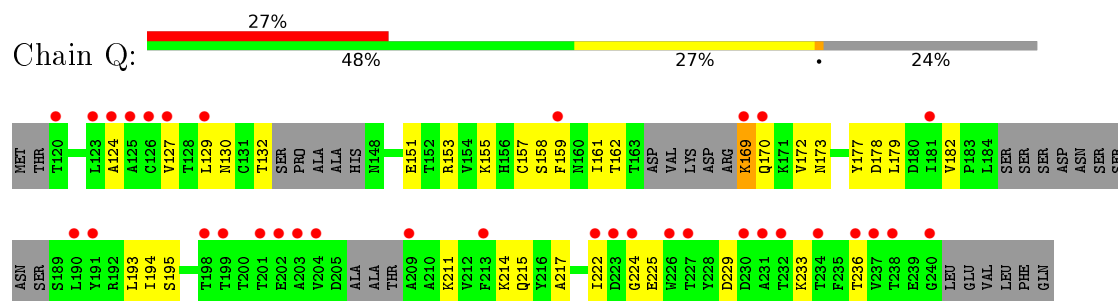
- Molecule 2: Heavy chain of anti-HIV-1 gp120 V1V2 antibody 830A



- Molecule 3: Scaffold HIV-1 gp120 V1V2 region derived from strain ZM109



- Molecule 3: Scaffold HIV-1 gp120 V1V2 region derived from strain ZM109



4 Data and refinement statistics

Property	Value	Source
Space group	P 21 21 21	Depositor
Cell constants a, b, c, α , β , γ	64.72Å 159.17Å 170.36Å 90.00° 90.00° 90.00°	Depositor
Resolution (Å)	49.03 – 3.00 49.03 – 3.00	Depositor EDS
% Data completeness (in resolution range)	99.3 (49.03-3.00) 88.5 (49.03-3.00)	Depositor EDS
R_{merge}	0.05	Depositor
R_{sym}	(Not available)	Depositor
$\langle I/\sigma(I) \rangle$ ¹	2.05 (at 3.01Å)	Xtriage
Refinement program	PHENIX (phenix.refine: 1.9_1692)	Depositor
R, R_{free}	0.219 , 0.296 0.228 , 0.308	Depositor DCC
R_{free} test set	1647 reflections (5.00%)	DCC
Wilson B-factor (Å ²)	92.2	Xtriage
Anisotropy	0.403	Xtriage
Bulk solvent k_{sol} (e/Å ³), B_{sol} (Å ²)	0.28 , 81.4	EDS
L-test for twinning ²	$\langle L \rangle = 0.47$, $\langle L^2 \rangle = 0.30$	Xtriage
Estimated twinning fraction	No twinning to report.	Xtriage
F_o, F_c correlation	0.93	EDS
Total number of atoms	8149	wwPDB-VP
Average B, all atoms (Å ²)	116.0	wwPDB-VP

Xtriage's analysis on translational NCS is as follows: *The largest off-origin peak in the Patterson function is 3.30% of the height of the origin peak. No significant pseudotranslation is detected.*

¹Intensities estimated from amplitudes.

²Theoretical values of $\langle |L| \rangle$, $\langle L^2 \rangle$ for acentric reflections are 0.5, 0.333 respectively for untwinned datasets, and 0.375, 0.2 for perfectly twinned datasets.

5 Model quality

5.1 Standard geometry

Bond lengths and bond angles in the following residue types are not validated in this section: NAG

The Z score for a bond length (or angle) is the number of standard deviations the observed value is removed from the expected value. A bond length (or angle) with $|Z| > 5$ is considered an outlier worth inspection. RMSZ is the root-mean-square of all Z scores of the bond lengths (or angles).

Mol	Chain	Bond lengths		Bond angles	
		RMSZ	$\# Z > 5$	RMSZ	$\# Z > 5$
1	L	0.43	0/1624	0.68	1/2205 (0.0%)
1	M	0.51	0/1696	0.66	1/2305 (0.0%)
2	H	0.49	0/1633	0.71	0/2234
2	I	0.52	0/1737	0.68	1/2378 (0.0%)
3	G	0.44	0/810	0.61	0/1098
3	Q	0.43	0/744	0.63	0/1006
All	All	0.48	0/8244	0.67	3/11226 (0.0%)

Chiral center outliers are detected by calculating the chiral volume of a chiral center and verifying if the center is modelled as a planar moiety or with the opposite hand. A planarity outlier is detected by checking planarity of atoms in a peptide group, atoms in a mainchain group or atoms of a sidechain that are expected to be planar.

Mol	Chain	#Chirality outliers	#Planarity outliers
1	L	0	2

There are no bond length outliers.

All (3) bond angle outliers are listed below:

Mol	Chain	Res	Type	Atoms	Z	Observed(°)	Ideal(°)
1	L	95	PRO	C-N-CD	-10.78	96.88	120.60
2	I	178	LEU	CA-CB-CG	7.33	132.17	115.30
1	M	7	SER	C-N-CD	5.11	139.13	128.40

There are no chirality outliers.

All (2) planarity outliers are listed below:

Mol	Chain	Res	Type	Group
1	L	95	PRO	Peptide

Continued on next page...

Continued from previous page...

Mol	Chain	Res	Type	Group
1	L	95(A)	PRO	Peptide

5.2 Too-close contacts ⓘ

In the following table, the Non-H and H(model) columns list the number of non-hydrogen atoms and hydrogen atoms in the chain respectively. The H(added) column lists the number of hydrogen atoms added and optimized by MolProbity. The Clashes column lists the number of clashes within the asymmetric unit, whereas Symm-Clashes lists symmetry related clashes.

Mol	Chain	Non-H	H(model)	H(added)	Clashes	Symm-Clashes
1	L	1589	0	1542	60	0
1	M	1659	0	1622	47	0
2	H	1590	0	1550	52	0
2	I	1691	0	1650	67	0
3	G	800	0	773	18	0
3	Q	736	0	702	16	0
4	G	42	0	39	0	0
4	Q	42	0	39	0	0
All	All	8149	0	7917	241	0

The all-atom clashscore is defined as the number of clashes found per 1000 atoms (including hydrogen atoms). The all-atom clashscore for this structure is 15.

The worst 5 of 241 close contacts within the same asymmetric unit are listed below, sorted by their clash magnitude.

Atom-1	Atom-2	Interatomic distance (Å)	Clash overlap (Å)
1:M:38:LYS:NZ	1:M:42:GLN:O	2.08	0.86
1:M:147:GLN:HB2	1:M:195:GLU:HB3	1.59	0.85
2:I:51:ILE:HG13	2:I:57:THR:HG22	1.61	0.80
2:H:99:TYR:HD1	2:H:100:PRO:HD2	1.50	0.77
2:I:87:THR:HG23	2:I:110:THR:HA	1.68	0.75

There are no symmetry-related clashes.

5.3 Torsion angles ⓘ

5.3.1 Protein backbone ⓘ

In the following table, the Percentiles column shows the percent Ramachandran outliers of the chain as a percentile score with respect to all X-ray entries followed by that with respect to entries

of similar resolution.

The Analysed column shows the number of residues for which the backbone conformation was analysed, and the total number of residues.

Mol	Chain	Analysed	Favoured	Allowed	Outliers	Percentiles	
1	L	200/216 (93%)	163 (82%)	25 (12%)	12 (6%)	2	11
1	M	213/216 (99%)	184 (86%)	23 (11%)	6 (3%)	6	30
2	H	206/226 (91%)	179 (87%)	20 (10%)	7 (3%)	5	25
2	I	224/226 (99%)	186 (83%)	27 (12%)	11 (5%)	3	16
3	G	97/124 (78%)	87 (90%)	6 (6%)	4 (4%)	3	20
3	Q	84/124 (68%)	67 (80%)	13 (16%)	4 (5%)	3	17
All	All	1024/1132 (90%)	866 (85%)	114 (11%)	44 (4%)	3	19

5 of 44 Ramachandran outliers are listed below:

Mol	Chain	Res	Type
1	L	95(A)	PRO
2	H	9	PRO
2	H	62	SER
2	H	191	THR
1	M	40	PRO

5.3.2 Protein sidechains ⓘ

In the following table, the Percentiles column shows the percent sidechain outliers of the chain as a percentile score with respect to all X-ray entries followed by that with respect to entries of similar resolution.

The Analysed column shows the number of residues for which the sidechain conformation was analysed, and the total number of residues.

Mol	Chain	Analysed	Rotameric	Outliers	Percentiles	
1	L	178/186 (96%)	154 (86%)	24 (14%)	5	20
1	M	185/186 (100%)	153 (83%)	32 (17%)	2	12
2	H	180/191 (94%)	161 (89%)	19 (11%)	8	31
2	I	191/191 (100%)	169 (88%)	22 (12%)	7	28
3	G	90/109 (83%)	76 (84%)	14 (16%)	3	16
3	Q	83/109 (76%)	77 (93%)	6 (7%)	18	53
All	All	907/972 (93%)	790 (87%)	117 (13%)	5	23

5 of 117 residues with a non-rotameric sidechain are listed below:

Mol	Chain	Res	Type
3	G	200	THR
1	M	69	THR
2	I	178	LEU
3	G	219	ASP
1	M	11	LEU

Some sidechains can be flipped to improve hydrogen bonding and reduce clashes. All (2) such sidechains are listed below:

Mol	Chain	Res	Type
2	H	105	GLN
2	I	6	GLN

5.3.3 RNA [i](#)

There are no RNA molecules in this entry.

5.4 Non-standard residues in protein, DNA, RNA chains [i](#)

There are no non-standard protein/DNA/RNA residues in this entry.

5.5 Carbohydrates [i](#)

There are no carbohydrates in this entry.

5.6 Ligand geometry [i](#)

6 ligands are modelled in this entry.

In the following table, the Counts columns list the number of bonds (or angles) for which Mogul statistics could be retrieved, the number of bonds (or angles) that are observed in the model and the number of bonds (or angles) that are defined in the chemical component dictionary. The Link column lists molecule types, if any, to which the group is linked. The Z score for a bond length (or angle) is the number of standard deviations the observed value is removed from the expected value. A bond length (or angle) with $|Z| > 2$ is considered an outlier worth inspection. RMSZ is the root-mean-square of all Z scores of the bond lengths (or angles).

Mol	Type	Chain	Res	Link	Bond lengths			Bond angles		
					Counts	RMSZ	$\# Z > 2$	Counts	RMSZ	$\# Z > 2$
4	NAG	G	301	3	14,14,15	0.49	0	15,19,21	0.27	0

Mol	Type	Chain	Res	Link	Bond lengths			Bond angles		
					Counts	RMSZ	# Z > 2	Counts	RMSZ	# Z > 2
4	NAG	G	302	3	14,14,15	0.67	1 (7%)	15,19,21	0.33	0
4	NAG	G	303	3	14,14,15	0.42	0	15,19,21	0.96	1 (6%)
4	NAG	Q	301	3	14,14,15	0.43	0	15,19,21	0.42	0
4	NAG	Q	302	3	14,14,15	1.07	1 (7%)	15,19,21	0.83	1 (6%)
4	NAG	Q	303	3	14,14,15	0.34	0	15,19,21	0.86	1 (6%)

In the following table, the Chirals column lists the number of chiral outliers, the number of chiral centers analysed, the number of these observed in the model and the number defined in the chemical component dictionary. Similar counts are reported in the Torsion and Rings columns. '-' means no outliers of that kind were identified.

Mol	Type	Chain	Res	Link	Chirals	Torsions	Rings
4	NAG	G	301	3	-	0/6/23/26	0/1/1/1
4	NAG	G	302	3	-	0/6/23/26	0/1/1/1
4	NAG	G	303	3	-	0/6/23/26	0/1/1/1
4	NAG	Q	301	3	-	0/6/23/26	0/1/1/1
4	NAG	Q	302	3	-	0/6/23/26	0/1/1/1
4	NAG	Q	303	3	-	0/6/23/26	0/1/1/1

All (2) bond length outliers are listed below:

Mol	Chain	Res	Type	Atoms	Z	Observed(Å)	Ideal(Å)
4	G	302	NAG	O5-C1	-2.25	1.40	1.43
4	Q	302	NAG	O5-C1	3.75	1.49	1.43

All (3) bond angle outliers are listed below:

Mol	Chain	Res	Type	Atoms	Z	Observed(°)	Ideal(°)
4	Q	303	NAG	C1-O5-C5	2.61	115.98	112.14
4	G	303	NAG	C1-O5-C5	2.93	116.45	112.14
4	Q	302	NAG	C1-O5-C5	3.05	116.63	112.14

There are no chirality outliers.

There are no torsion outliers.

There are no ring outliers.

No monomer is involved in short contacts.

5.7 Other polymers [i](#)

There are no such residues in this entry.

5.8 Polymer linkage issues [i](#)

There are no chain breaks in this entry.

6 Fit of model and data [i](#)

6.1 Protein, DNA and RNA chains [i](#)

In the following table, the column labelled ‘#RSRZ> 2’ contains the number (and percentage) of RSRZ outliers, followed by percent RSRZ outliers for the chain as percentile scores relative to all X-ray entries and entries of similar resolution. The OWAB column contains the minimum, median, 95th percentile and maximum values of the occupancy-weighted average B-factor per residue. The column labelled ‘Q< 0.9’ lists the number of (and percentage) of residues with an average occupancy less than 0.9.

Mol	Chain	Analysed	<RSRZ>	#RSRZ>2	OWAB(Å ²)	Q<0.9
1	L	206/216 (95%)	0.97	33 (16%) 3 1	82, 156, 183, 195	0
1	M	215/216 (99%)	0.23	4 (1%) 70 41	73, 96, 122, 153	0
2	H	210/226 (92%)	0.43	5 (2%) 62 32	77, 101, 159, 172	0
2	I	226/226 (100%)	0.32	5 (2%) 65 35	74, 98, 143, 172	0
3	G	103/124 (83%)	0.30	2 (1%) 70 41	91, 114, 149, 174	0
3	Q	94/124 (75%)	1.58	34 (36%) 0 0	89, 163, 210, 216	0
All	All	1054/1132 (93%)	0.56	83 (7%) 15 5	73, 107, 180, 216	0

The worst 5 of 83 RSRZ outliers are listed below:

Mol	Chain	Res	Type	RSRZ
1	L	134	CYS	8.1
1	L	135	LEU	8.0
3	Q	201	THR	7.9
3	Q	123	LEU	7.3
1	L	175	LEU	7.1

6.2 Non-standard residues in protein, DNA, RNA chains [i](#)

There are no non-standard protein/DNA/RNA residues in this entry.

6.3 Carbohydrates [i](#)

There are no carbohydrates in this entry.

6.4 Ligands [i](#)

In the following table, the Atoms column lists the number of modelled atoms in the group and the number defined in the chemical component dictionary. LLDF column lists the quality of electron density of the group with respect to its neighbouring residues in protein, DNA or RNA chains. The B-factors column lists the minimum, median, 95th percentile and maximum values of B factors of atoms in the group. The column labelled 'Q< 0.9' lists the number of atoms with occupancy less than 0.9.

Mol	Type	Chain	Res	Atoms	RSCC	RSR	LLDF	B-factors(Å ²)	Q<0.9
4	NAG	G	301	14/15	0.81	0.52	5.06	143,156,163,167	0
4	NAG	G	303	14/15	0.88	0.36	2.73	128,138,140,141	0
4	NAG	Q	303	14/15	0.87	0.32	0.53	106,118,126,128	0
4	NAG	Q	302	14/15	0.78	0.31	-0.10	141,150,156,157	0
4	NAG	G	302	14/15	0.90	0.27	-0.28	118,129,136,136	0
4	NAG	Q	301	14/15	0.85	0.50	-	153,158,165,170	0

6.5 Other polymers [i](#)

There are no such residues in this entry.