



Full wwPDB X-ray Structure Validation Report ⓘ

Feb 19, 2016 – 09:25 PM GMT

PDB ID : 4Z16
Title : Crystal Structure of the Jak3 Kinase Domain Covalently Bound to N-(3-(((5-chloro-2-((2-methoxy-4-(4-methylpiperazin-1-yl)phenyl)amino)pyrimidin-4-yl)amino)methyl)phenyl)acrylamide
Authors : McNally, R.; Tan, L.; Gray, N.S.; Eck, M.J.
Deposited on : 2015-03-26
Resolution : 2.90 Å(reported)

This is a Full wwPDB X-ray Structure Validation Report for a publicly released PDB entry.
We welcome your comments at validation@mail.wwpdb.org
A user guide is available at
<http://wwpdb.org/validation/2016/XrayValidationReportHelp>
with specific help available everywhere you see the ⓘ symbol.

The following versions of software and data (see [references ⓘ](#)) were used in the production of this report:

MolProbity : 4.02b-467
Mogul : 1.7.1 (RC1), CSD as537be (2016)
Xtriage (Phenix) : 1.9-1692
EDS : rb-20026982
Percentile statistics : 20151230.v01 (using entries in the PDB archive December 30th 2015)
Refmac : 5.8.0135
CCP4 : 6.5.0
Ideal geometry (proteins) : Engh & Huber (2001)
Ideal geometry (DNA, RNA) : Parkinson et al. (1996)
Validation Pipeline (wwPDB-VP) : rb-20026982

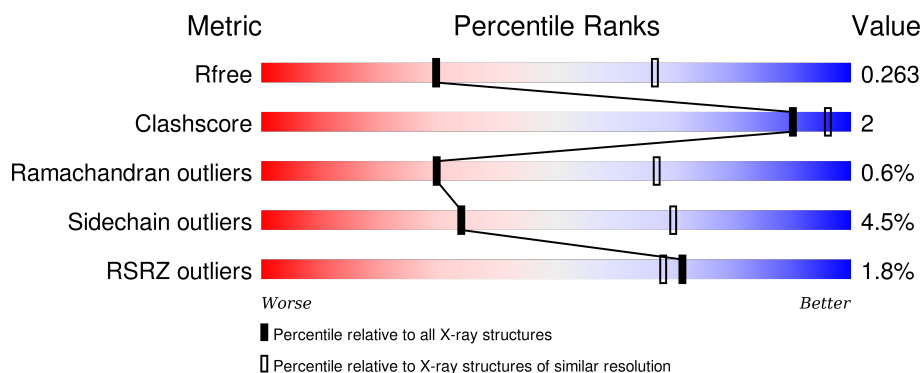
1 Overall quality at a glance ⓘ

The following experimental techniques were used to determine the structure:

X-RAY DIFFRACTION

The reported resolution of this entry is 2.90 Å.

Percentile scores (ranging between 0-100) for global validation metrics of the entry are shown in the following graphic. The table shows the number of entries on which the scores are based.



Metric	Whole archive (#Entries)	Similar resolution (#Entries, resolution range(Å))
R_{free}	91344	1451 (2.90-2.90)
Clashscore	102246	1668 (2.90-2.90)
Ramachandran outliers	100387	1630 (2.90-2.90)
Sidechain outliers	100360	1632 (2.90-2.90)
RSRZ outliers	91569	1456 (2.90-2.90)

The table below summarises the geometric issues observed across the polymeric chains and their fit to the electron density. The red, orange, yellow and green segments on the lower bar indicate the fraction of residues that contain outliers for ≥ 3 , 2, 1 and 0 types of geometric quality criteria. A grey segment represents the fraction of residues that are not modelled. The numeric value for each fraction is indicated below the corresponding segment, with a dot representing fractions $\leq 5\%$. The upper red bar (where present) indicates the fraction of residues that have poor fit to the electron density. The numeric value is given above the bar.

Mol	Chain	Length	Quality of chain
1	A	316	<div> <div>0.5%</div> <div>78% 9% 14%</div> </div>
1	B	316	<div> <div>0.5%</div> <div>80% 8% 12%</div> </div>
1	C	316	<div> <div>2%</div> <div>79% 7% 14%</div> </div>
1	D	316	<div> <div>3%</div> <div>78% 9% 14%</div> </div>

2 Entry composition

There are 3 unique types of molecules in this entry. The entry contains 9053 atoms, of which 0 are hydrogens and 0 are deuteriums.

In the tables below, the ZeroOcc column contains the number of atoms modelled with zero occupancy, the AltConf column contains the number of residues with at least one atom in alternate conformation and the Trace column contains the number of residues modelled with at most 2 atoms.

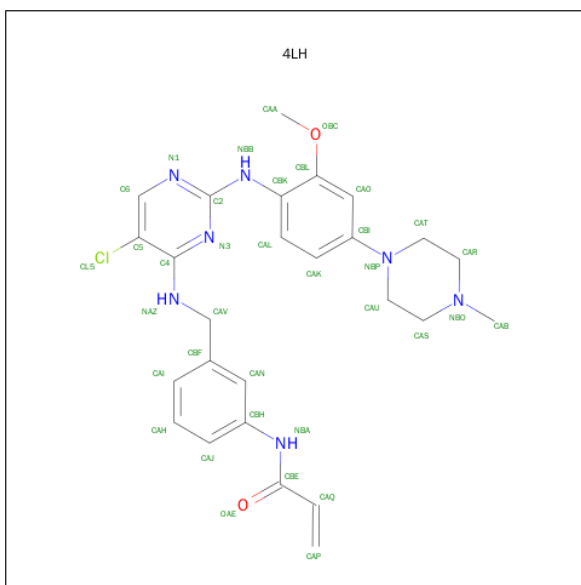
- Molecule 1 is a protein called Tyrosine-protein kinase JAK3.

Mol	Chain	Residues	Atoms						ZeroOcc	AltConf	Trace
1	A	273	Total	C	N	O	P	S	0	0	0
			2207	1404	385	401	2	15			
1	B	278	Total	C	N	O	P	S	0	0	0
			2242	1424	391	410	2	15			
1	C	273	Total	C	N	O	P	S	0	0	0
			2207	1404	385	401	2	15			
1	D	273	Total	C	N	O	P	S	0	0	0
			2207	1404	385	401	2	15			

There are 16 discrepancies between the modelled and reference sequences:

Chain	Residue	Modelled	Actual	Comment	Reference
A	809	GLY	-	expression tag	UNP P52333
A	810	SER	-	expression tag	UNP P52333
A	896	PRO	GLN	see remark 999	UNP P52333
A	897	GLU	SER	see remark 999	UNP P52333
B	809	GLY	-	expression tag	UNP P52333
B	810	SER	-	expression tag	UNP P52333
B	896	PRO	GLN	see remark 999	UNP P52333
B	897	GLU	SER	see remark 999	UNP P52333
C	809	GLY	-	expression tag	UNP P52333
C	810	SER	-	expression tag	UNP P52333
C	896	PRO	GLN	see remark 999	UNP P52333
C	897	GLU	SER	see remark 999	UNP P52333
D	809	GLY	-	expression tag	UNP P52333
D	810	SER	-	expression tag	UNP P52333
D	896	PRO	GLN	see remark 999	UNP P52333
D	897	GLU	SER	see remark 999	UNP P52333

- Molecule 2 is N-(3-{[(5-chloro-2-{[2-methoxy-4-(4-methylpiperazin-1-yl)phenyl]amino}pyrimidin-4-yl)amino]methyl}phenyl)prop-2-enamide (three-letter code: 4LH) (formula: C₂₆H₃₀ClN₇O₂).



Mol	Chain	Residues	Atoms					ZeroOcc	AltConf
2	A	1	Total 36	C 26	Cl 1	N 7	O 2	0	0
2	B	1	Total 36	C 26	Cl 1	N 7	O 2	0	0
2	C	1	Total 36	C 26	Cl 1	N 7	O 2	0	0
2	D	1	Total 36	C 26	Cl 1	N 7	O 2	0	0

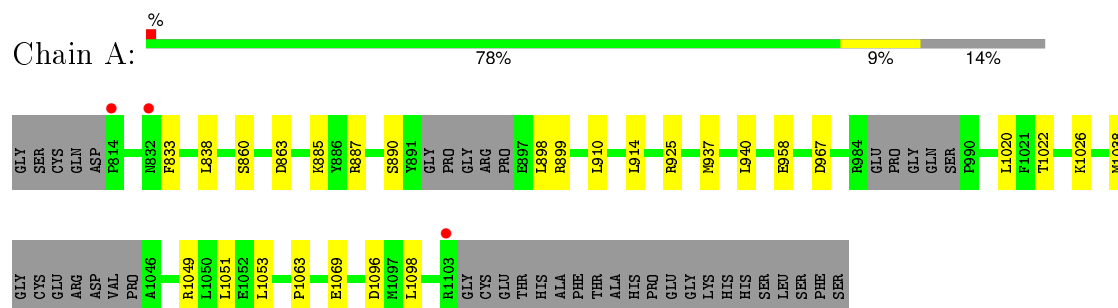
- Molecule 3 is water.

Mol	Chain	Residues	Atoms	ZeroOcc	AltConf
3	A	8	Total O 8 8	0	0
3	B	16	Total O 16 16	0	0
3	C	13	Total O 13 13	0	0
3	D	9	Total O 9 9	0	0

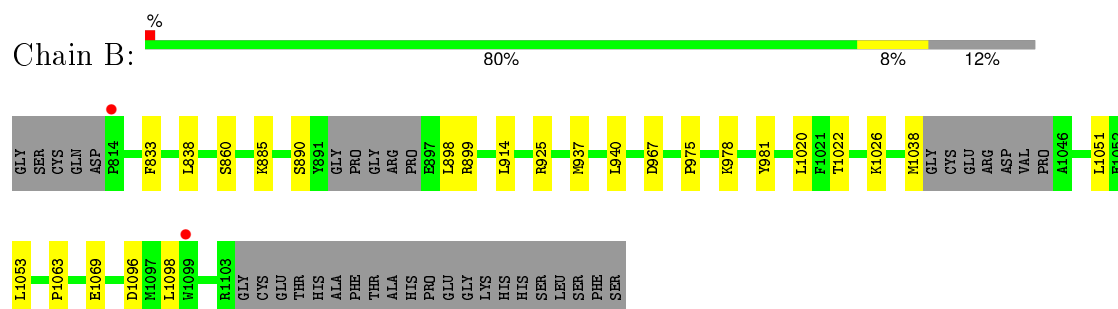
3 Residue-property plots [i](#)

These plots are drawn for all protein, RNA and DNA chains in the entry. The first graphic for a chain summarises the proportions of errors displayed in the second graphic. The second graphic shows the sequence view annotated by issues in geometry and electron density. Residues are color-coded according to the number of geometric quality criteria for which they contain at least one outlier: green = 0, yellow = 1, orange = 2 and red = 3 or more. A red dot above a residue indicates a poor fit to the electron density ($RSRZ > 2$). Stretches of 2 or more consecutive residues without any outlier are shown as a green connector. Residues present in the sample, but not in the model, are shown in grey.

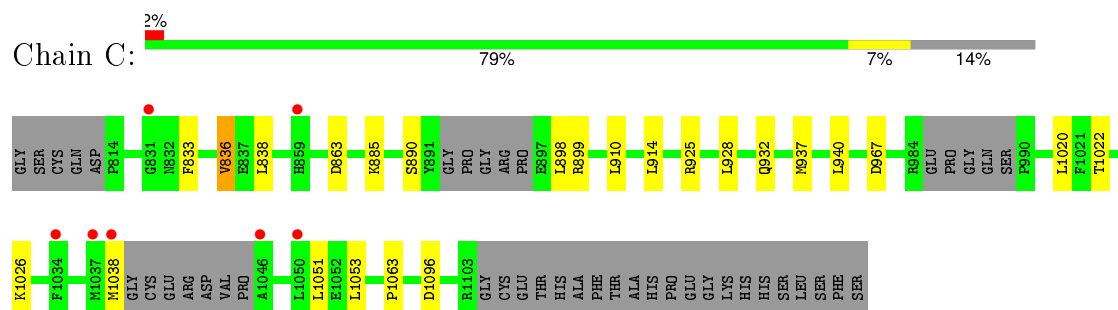
• Molecule 1: Tyrosine-protein kinase JAK3



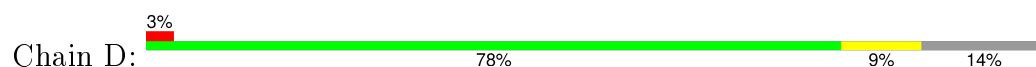
• Molecule 1: Tyrosine-protein kinase JAK3

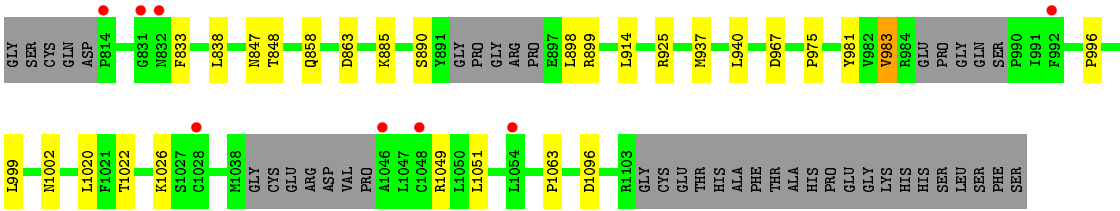


• Molecule 1: Tyrosine-protein kinase JAK3



• Molecule 1: Tyrosine-protein kinase JAK3





4 Data and refinement statistics

Property	Value	Source
Space group	P 1	Depositor
Cell constants a, b, c, α , β , γ	57.62Å 68.21Å 93.13Å 92.64° 93.06° 86.20°	Depositor
Resolution (Å)	92.91 – 2.90 92.91 – 2.90	Depositor EDS
% Data completeness (in resolution range)	97.0 (92.91-2.90) 95.9 (92.91-2.90)	Depositor EDS
R_{merge}	(Not available)	Depositor
R_{sym}	0.13	Depositor
$\langle I/\sigma(I) \rangle$ ¹	1.71 (at 2.91Å)	Xtriage
Refinement program	BUSTER 2.10.2	Depositor
R, R_{free}	0.202 , 0.240 0.226 , 0.263	Depositor DCC
R_{free} test set	1495 reflections (5.18%)	DCC
Wilson B-factor (Å ²)	49.9	Xtriage
Anisotropy	0.439	Xtriage
Bulk solvent k_{sol} (e/Å ³), B_{sol} (Å ²)	0.33 , 37.1	EDS
Estimated twinning fraction	No twinning to report.	Xtriage
L-test for twinning ²	$\langle L \rangle = 0.48$, $\langle L^2 \rangle = 0.30$	Xtriage
Outliers	0 of 30357 reflections	Xtriage
F_o, F_c correlation	0.91	EDS
Total number of atoms	9053	wwPDB-VP
Average B, all atoms (Å ²)	65.0	wwPDB-VP

Xtriage's analysis on translational NCS is as follows: *The largest off-origin peak in the Patterson function is 6.85% of the height of the origin peak. No significant pseudotranslation is detected.*

¹Intensities estimated from amplitudes.

²Theoretical values of $\langle |L| \rangle$, $\langle L^2 \rangle$ for acentric reflections are 0.5, 0.375 respectively for untwinned datasets, and 0.333, 0.2 for perfectly twinned datasets.

5 Model quality [i](#)

5.1 Standard geometry [i](#)

Bond lengths and bond angles in the following residue types are not validated in this section: 4LH, PTR

The Z score for a bond length (or angle) is the number of standard deviations the observed value is removed from the expected value. A bond length (or angle) with $|Z| > 5$ is considered an outlier worth inspection. RMSZ is the root-mean-square of all Z scores of the bond lengths (or angles).

Mol	Chain	Bond lengths		Bond angles	
		RMSZ	$\# Z > 5$	RMSZ	$\# Z > 5$
1	A	0.40	0/2223	0.61	0/2997
1	B	0.41	0/2260	0.61	0/3050
1	C	0.40	0/2223	0.61	0/2997
1	D	0.42	0/2223	0.62	0/2997
All	All	0.41	0/8929	0.61	0/12041

There are no bond length outliers.

There are no bond angle outliers.

There are no chirality outliers.

There are no planarity outliers.

5.2 Too-close contacts [i](#)

In the following table, the Non-H and H(model) columns list the number of non-hydrogen atoms and hydrogen atoms in the chain respectively. The H(added) column lists the number of hydrogen atoms added and optimized by MolProbity. The Clashes column lists the number of clashes within the asymmetric unit, whereas Symm-Clashes lists symmetry related clashes.

Mol	Chain	Non-H	H(model)	H(added)	Clashes	Symm-Clashes
1	A	2207	0	2182	10	0
1	B	2242	0	2211	8	0
1	C	2207	0	2182	9	0
1	D	2207	0	2182	9	0
2	A	36	0	29	2	0
2	B	36	0	29	2	0
2	C	36	0	29	3	0
2	D	36	0	29	1	0
3	A	8	0	0	0	0

Continued on next page...

Continued from previous page...

Mol	Chain	Non-H	H(model)	H(added)	Clashes	Symm-Clashes
3	B	16	0	0	0	0
3	C	13	0	0	0	0
3	D	9	0	0	0	0
All	All	9053	0	8873	41	0

The all-atom clashscore is defined as the number of clashes found per 1000 atoms (including hydrogen atoms). The all-atom clashscore for this structure is 2.

All (41) close contacts within the same asymmetric unit are listed below, sorted by their clash magnitude.

Atom-1	Atom-2	Interatomic distance (Å)	Clash overlap (Å)
1:C:928:LEU:HG	1:C:932:GLN:HE21	1.55	0.70
1:D:983:VAL:HG12	1:D:1002:ASN:HB3	1.78	0.65
1:A:1038:MET:HB3	1:A:1053:LEU:HD11	1.79	0.63
1:A:1038:MET:HB2	1:A:1049:ARG:HG3	1.80	0.63
1:D:975:PRO:HD3	1:D:981:PTR:HD1	1.83	0.60
1:A:890:SER:HB3	1:A:899:ARG:HB2	1.89	0.54
1:C:928:LEU:HG	1:C:932:GLN:NE2	2.22	0.54
1:C:890:SER:HB3	1:C:899:ARG:HB2	1.90	0.54
1:B:890:SER:HB3	1:B:899:ARG:HB2	1.90	0.53
1:D:890:SER:HB3	1:D:899:ARG:HB2	1.90	0.52
1:B:975:PRO:HD3	1:B:981:PTR:HD1	1.92	0.52
1:B:1038:MET:HB3	1:B:1053:LEU:HD11	1.93	0.51
1:A:958:GLU:HG2	1:D:847:ASN:HD21	1.75	0.51
1:D:996:PRO:HA	1:D:999:LEU:HD12	1.94	0.49
1:A:914:LEU:HD11	1:A:1020:LEU:HD23	1.95	0.48
1:C:914:LEU:HD11	1:C:1020:LEU:HD23	1.96	0.48
1:D:1022:THR:HG23	1:D:1063:PRO:HB3	1.96	0.47
1:B:914:LEU:HD11	1:B:1020:LEU:HD23	1.96	0.47
1:C:1022:THR:HG23	1:C:1063:PRO:HB3	1.96	0.47
1:C:836:VAL:HG21	2:C:2000:4LH:H12	1.96	0.47
1:A:1022:THR:HG23	1:A:1063:PRO:HB3	1.97	0.47
1:B:1022:THR:HG23	1:B:1063:PRO:HB3	1.97	0.47
1:D:914:LEU:HD11	1:D:1020:LEU:HD23	1.97	0.46
1:C:1038:MET:HB3	1:C:1053:LEU:HD11	1.98	0.46
1:B:1069:GLU:HB2	1:B:1098:LEU:HD21	1.98	0.46
2:B:2000:4LH:OAE	2:B:2000:4LH:H8	2.17	0.45
2:D:2000:4LH:H8	2:D:2000:4LH:OAE	2.16	0.45
2:C:2000:4LH:H8	2:C:2000:4LH:OAE	2.17	0.43
2:A:2000:4LH:OAE	2:A:2000:4LH:H8	2.18	0.43
1:B:1026:LYS:H	1:B:1026:LYS:HD3	1.83	0.43

Continued on next page...

Continued from previous page...

Atom-1	Atom-2	Interatomic distance (Å)	Clash overlap (Å)
1:D:1026:LYS:HD3	1:D:1026:LYS:H	1.85	0.42
2:B:2000:4LH:N3	2:B:2000:4LH:CAL	2.83	0.41
1:A:1069:GLU:HB2	1:A:1098:LEU:HD21	2.03	0.41
2:C:2000:4LH:CAL	2:C:2000:4LH:N3	2.83	0.41
2:A:2000:4LH:CAL	2:A:2000:4LH:N3	2.83	0.41
1:A:887:ARG:HH22	1:D:848:THR:HG22	1.86	0.40
1:C:910:LEU:HD21	1:C:1020:LEU:HD21	2.04	0.40
1:C:1026:LYS:H	1:C:1026:LYS:HD3	1.85	0.40
1:A:1026:LYS:HD3	1:A:1026:LYS:H	1.85	0.40
1:B:975:PRO:HG2	1:B:978:LYS:HB2	2.03	0.40
1:A:910:LEU:HD21	1:A:1020:LEU:HD21	2.04	0.40

There are no symmetry-related clashes.

5.3 Torsion angles [i](#)

5.3.1 Protein backbone [i](#)

In the following table, the Percentiles column shows the percent Ramachandran outliers of the chain as a percentile score with respect to all X-ray entries followed by that with respect to entries of similar resolution.

The Analysed column shows the number of residues for which the backbone conformation was analysed, and the total number of residues.

Mol	Chain	Analysed	Favoured	Allowed	Outliers	Percentiles
1	A	263/316 (83%)	256 (97%)	5 (2%)	2 (1%)	24 60
1	B	270/316 (85%)	260 (96%)	8 (3%)	2 (1%)	26 63
1	C	263/316 (83%)	256 (97%)	6 (2%)	1 (0%)	39 74
1	D	263/316 (83%)	256 (97%)	6 (2%)	1 (0%)	39 74
All	All	1059/1264 (84%)	1028 (97%)	25 (2%)	6 (1%)	30 67

All (6) Ramachandran outliers are listed below:

Mol	Chain	Res	Type
1	A	860	SER
1	A	967	ASP
1	B	967	ASP
1	C	967	ASP

Continued on next page...

Continued from previous page...

Mol	Chain	Res	Type
1	D	967	ASP
1	B	860	SER

5.3.2 Protein sidechains ⓘ

In the following table, the Percentiles column shows the percent sidechain outliers of the chain as a percentile score with respect to all X-ray entries followed by that with respect to entries of similar resolution.

The Analysed column shows the number of residues for which the sidechain conformation was analysed, and the total number of residues.

Mol	Chain	Analysed	Rotameric	Outliers	Percentiles	
1	A	238/272 (88%)	228 (96%)	10 (4%)	36	73
1	B	242/272 (89%)	233 (96%)	9 (4%)	41	77
1	C	238/272 (88%)	227 (95%)	11 (5%)	33	69
1	D	238/272 (88%)	225 (94%)	13 (6%)	27	61
All	All	956/1088 (88%)	913 (96%)	43 (4%)	34	70

All (43) residues with a non-rotameric sidechain are listed below:

Mol	Chain	Res	Type
1	A	833	PHE
1	A	838	LEU
1	A	863	ASP
1	A	885	LYS
1	A	898	LEU
1	A	925	ARG
1	A	937	MET
1	A	940	LEU
1	A	1051	LEU
1	A	1096	ASP
1	B	833	PHE
1	B	838	LEU
1	B	885	LYS
1	B	898	LEU
1	B	925	ARG
1	B	937	MET
1	B	940	LEU
1	B	1051	LEU
1	B	1096	ASP

Continued on next page...

Continued from previous page...

Mol	Chain	Res	Type
1	C	833	PHE
1	C	836	VAL
1	C	838	LEU
1	C	863	ASP
1	C	885	LYS
1	C	898	LEU
1	C	925	ARG
1	C	937	MET
1	C	940	LEU
1	C	1051	LEU
1	C	1096	ASP
1	D	833	PHE
1	D	838	LEU
1	D	858	GLN
1	D	863	ASP
1	D	885	LYS
1	D	898	LEU
1	D	925	ARG
1	D	937	MET
1	D	940	LEU
1	D	983	VAL
1	D	1049	ARG
1	D	1051	LEU
1	D	1096	ASP

Some sidechains can be flipped to improve hydrogen bonding and reduce clashes. All (12) such sidechains are listed below:

Mol	Chain	Res	Type
1	A	847	ASN
1	A	856	GLN
1	A	915	GLN
1	B	869	GLN
1	B	915	GLN
1	B	1007	GLN
1	C	856	GLN
1	C	915	GLN
1	D	847	ASN
1	D	856	GLN
1	D	858	GLN
1	D	915	GLN

5.3.3 RNA ⓘ

There are no RNA molecules in this entry.

5.4 Non-standard residues in protein, DNA, RNA chains ⓘ

8 non-standard protein/DNA/RNA residues are modelled in this entry.

In the following table, the Counts columns list the number of bonds (or angles) for which Mogul statistics could be retrieved, the number of bonds (or angles) that are observed in the model and the number of bonds (or angles) that are defined in the chemical component dictionary. The Link column lists molecule types, if any, to which the group is linked. The Z score for a bond length (or angle) is the number of standard deviations the observed value is removed from the expected value. A bond length (or angle) with $|Z| > 2$ is considered an outlier worth inspection. RMSZ is the root-mean-square of all Z scores of the bond lengths (or angles).

Mol	Type	Chain	Res	Link	Bond lengths			Bond angles		
					Counts	RMSZ	# $ Z > 2$	Counts	RMSZ	# $ Z > 2$
1	PTR	A	980	1	13,16,17	1.45	2 (15%)	19,22,24	1.44	3 (15%)
1	PTR	A	981	1	13,16,17	1.41	3 (23%)	19,22,24	1.33	2 (10%)
1	PTR	B	980	1	13,16,17	1.37	1 (7%)	19,22,24	1.38	2 (10%)
1	PTR	B	981	1	13,16,17	1.46	2 (15%)	19,22,24	1.31	1 (5%)
1	PTR	C	980	1	13,16,17	1.50	2 (15%)	19,22,24	1.43	4 (21%)
1	PTR	C	981	1	13,16,17	1.31	1 (7%)	19,22,24	1.09	2 (10%)
1	PTR	D	980	1	13,16,17	1.46	1 (7%)	19,22,24	1.41	4 (21%)
1	PTR	D	981	1	13,16,17	1.32	1 (7%)	19,22,24	1.31	4 (21%)

In the following table, the Chirals column lists the number of chiral outliers, the number of chiral centers analysed, the number of these observed in the model and the number defined in the chemical component dictionary. Similar counts are reported in the Torsion and Rings columns. '-' means no outliers of that kind were identified.

Mol	Type	Chain	Res	Link	Chirals	Torsions	Rings
1	PTR	A	980	1	-	0/9/11/13	0/1/1/1
1	PTR	A	981	1	-	0/9/11/13	0/1/1/1
1	PTR	B	980	1	-	0/9/11/13	0/1/1/1
1	PTR	B	981	1	-	0/9/11/13	0/1/1/1
1	PTR	C	980	1	-	0/9/11/13	0/1/1/1
1	PTR	C	981	1	-	0/9/11/13	0/1/1/1
1	PTR	D	980	1	-	0/9/11/13	0/1/1/1
1	PTR	D	981	1	-	0/9/11/13	0/1/1/1

All (13) bond length outliers are listed below:

Mol	Chain	Res	Type	Atoms	Z	Observed(Å)	Ideal(Å)
1	A	980	PTR	CE1-CZ	2.03	1.42	1.38
1	C	980	PTR	CE1-CZ	2.11	1.43	1.38
1	A	981	PTR	CD2-CG	2.23	1.43	1.38
1	A	981	PTR	CE1-CZ	2.39	1.43	1.38
1	B	981	PTR	CE1-CZ	2.46	1.43	1.38
1	C	981	PTR	CE2-CZ	2.70	1.44	1.38
1	B	981	PTR	CE2-CZ	2.76	1.44	1.38
1	A	981	PTR	CE2-CZ	2.98	1.44	1.38
1	B	980	PTR	CE2-CZ	3.15	1.45	1.38
1	D	981	PTR	CE2-CZ	3.43	1.45	1.38
1	A	980	PTR	CE2-CZ	3.58	1.46	1.38
1	C	980	PTR	CE2-CZ	3.66	1.46	1.38
1	D	980	PTR	CE2-CZ	3.77	1.46	1.38

All (22) bond angle outliers are listed below:

Mol	Chain	Res	Type	Atoms	Z	Observed(°)	Ideal(°)
1	D	980	PTR	O-C-CA	-2.22	119.78	125.72
1	C	980	PTR	O-C-CA	-2.15	119.95	125.72
1	C	981	PTR	O-C-CA	-2.14	119.98	125.72
1	D	981	PTR	CB-CG-CD1	-2.10	116.67	120.91
1	A	981	PTR	O-C-CA	-2.09	120.11	125.72
1	D	981	PTR	O-C-CA	-2.07	120.17	125.72
1	B	980	PTR	O-C-CA	-2.05	120.22	125.72
1	A	980	PTR	O-C-CA	-2.05	120.22	125.72
1	C	980	PTR	OH-CZ-CE1	-2.04	112.85	119.22
1	D	980	PTR	OH-CZ-CE1	-2.02	112.91	119.22
1	C	980	PTR	O2P-P-OH	2.26	112.66	105.47
1	D	981	PTR	O2P-P-OH	2.33	112.91	105.47
1	D	980	PTR	O3P-P-OH	2.42	113.17	105.47
1	C	981	PTR	CG-CB-CA	2.43	119.73	114.12
1	D	981	PTR	OH-CZ-CE2	2.53	127.09	119.22
1	A	981	PTR	OH-CZ-CE2	2.57	127.22	119.22
1	A	980	PTR	O3P-P-OH	2.78	114.33	105.47
1	A	980	PTR	OH-CZ-CE2	2.88	128.18	119.22
1	B	980	PTR	OH-CZ-CE2	2.96	128.42	119.22
1	C	980	PTR	OH-CZ-CE2	3.16	129.06	119.22
1	D	980	PTR	OH-CZ-CE2	3.22	129.25	119.22
1	B	981	PTR	O2P-P-OH	3.33	116.08	105.47

There are no chirality outliers.

There are no torsion outliers.

There are no ring outliers.

2 monomers are involved in 2 short contacts:

Mol	Chain	Res	Type	Clashes	Symm-Clashes
1	B	981	PTR	1	0
1	D	981	PTR	1	0

5.5 Carbohydrates [i](#)

There are no carbohydrates in this entry.

5.6 Ligand geometry [i](#)

4 ligands are modelled in this entry.

In the following table, the Counts columns list the number of bonds (or angles) for which Mogul statistics could be retrieved, the number of bonds (or angles) that are observed in the model and the number of bonds (or angles) that are defined in the chemical component dictionary. The Link column lists molecule types, if any, to which the group is linked. The Z score for a bond length (or angle) is the number of standard deviations the observed value is removed from the expected value. A bond length (or angle) with $|Z| > 2$ is considered an outlier worth inspection. RMSZ is the root-mean-square of all Z scores of the bond lengths (or angles).

Mol	Type	Chain	Res	Link	Bond lengths			Bond angles		
					Counts	RMSZ	# $ Z > 2$	Counts	RMSZ	# $ Z > 2$
2	4LH	A	2000	1	39,39,39	1.71	6 (15%)	49,53,53	2.58	12 (24%)
2	4LH	B	2000	1	39,39,39	1.70	7 (17%)	49,53,53	2.55	13 (26%)
2	4LH	C	2000	1	39,39,39	1.72	7 (17%)	49,53,53	2.54	11 (22%)
2	4LH	D	2000	1	39,39,39	1.70	5 (12%)	49,53,53	2.52	13 (26%)

In the following table, the Chirals column lists the number of chiral outliers, the number of chiral centers analysed, the number of these observed in the model and the number defined in the chemical component dictionary. Similar counts are reported in the Torsion and Rings columns. '-' means no outliers of that kind were identified.

Mol	Type	Chain	Res	Link	Chirals	Torsions	Rings
2	4LH	A	2000	1	-	2/21/31/31	0/4/4/4
2	4LH	B	2000	1	-	2/21/31/31	0/4/4/4
2	4LH	C	2000	1	-	2/21/31/31	0/4/4/4
2	4LH	D	2000	1	-	2/21/31/31	0/4/4/4

All (25) bond length outliers are listed below:

Mol	Chain	Res	Type	Atoms	Z	Observed(Å)	Ideal(Å)
2	C	2000	4LH	CAV-CBF	-4.77	1.40	1.51
2	A	2000	4LH	CAV-CBF	-4.76	1.40	1.51
2	B	2000	4LH	CAV-CBF	-4.68	1.40	1.51
2	D	2000	4LH	CAV-CBF	-4.47	1.41	1.51
2	D	2000	4LH	CBH-NBA	-2.89	1.36	1.41
2	A	2000	4LH	CBH-NBA	-2.80	1.36	1.41
2	C	2000	4LH	CBH-NBA	-2.78	1.36	1.41
2	B	2000	4LH	CBH-NBA	-2.64	1.36	1.41
2	B	2000	4LH	CAU-NBP	2.08	1.49	1.46
2	B	2000	4LH	CAT-NBP	2.09	1.49	1.46
2	C	2000	4LH	CAT-NBP	2.29	1.50	1.46
2	C	2000	4LH	CAU-NBP	2.45	1.50	1.46
2	A	2000	4LH	CAU-NBP	2.53	1.50	1.46
2	C	2000	4LH	C6-N1	3.26	1.41	1.34
2	B	2000	4LH	C6-N1	3.42	1.41	1.34
2	A	2000	4LH	C6-N1	3.42	1.41	1.34
2	D	2000	4LH	C6-N1	3.43	1.41	1.34
2	B	2000	4LH	CAQ-CBE	4.14	1.54	1.48
2	D	2000	4LH	CAQ-CBE	4.25	1.55	1.48
2	C	2000	4LH	CAQ-CBE	4.30	1.55	1.48
2	A	2000	4LH	CAQ-CBE	4.38	1.55	1.48
2	C	2000	4LH	CAP-CAQ	4.74	1.53	1.30
2	A	2000	4LH	CAP-CAQ	4.75	1.53	1.30
2	B	2000	4LH	CAP-CAQ	4.81	1.53	1.30
2	D	2000	4LH	CAP-CAQ	4.86	1.54	1.30

All (49) bond angle outliers are listed below:

Mol	Chain	Res	Type	Atoms	Z	Observed(°)	Ideal(°)
2	B	2000	4LH	CAP-CAQ-CBE	-9.78	113.72	122.45
2	D	2000	4LH	CAP-CAQ-CBE	-9.65	113.84	122.45
2	A	2000	4LH	CAP-CAQ-CBE	-9.62	113.86	122.45
2	C	2000	4LH	CAP-CAQ-CBE	-9.60	113.89	122.45
2	A	2000	4LH	N1-C2-N3	-7.38	118.80	126.66
2	B	2000	4LH	N1-C2-N3	-7.15	119.04	126.66
2	C	2000	4LH	N1-C2-N3	-7.10	119.10	126.66
2	D	2000	4LH	N1-C2-N3	-6.94	119.26	126.66
2	A	2000	4LH	C6-C5-C4	-4.44	117.72	120.16
2	C	2000	4LH	C6-C5-C4	-4.37	117.76	120.16
2	B	2000	4LH	C5-C6-N1	-3.99	118.75	122.90
2	D	2000	4LH	C5-C6-N1	-3.92	118.82	122.90
2	D	2000	4LH	C6-C5-C4	-3.81	118.07	120.16
2	A	2000	4LH	C5-C6-N1	-3.75	119.00	122.90

Continued on next page...

Continued from previous page...

Mol	Chain	Res	Type	Atoms	Z	Observed(°)	Ideal(°)
2	B	2000	4LH	C6-C5-C4	-3.68	118.14	120.16
2	C	2000	4LH	C5-C6-N1	-3.63	119.11	122.90
2	C	2000	4LH	OAE-CBE-CAQ	-2.28	118.13	123.04
2	B	2000	4LH	OAE-CBE-CAQ	-2.25	118.20	123.04
2	A	2000	4LH	OAE-CBE-CAQ	-2.22	118.27	123.04
2	D	2000	4LH	OAE-CBE-CAQ	-2.22	118.27	123.04
2	B	2000	4LH	CBH-NBA-CBE	-2.20	124.73	128.22
2	D	2000	4LH	CBH-NBA-CBE	-2.04	125.00	128.22
2	A	2000	4LH	CAJ-CBH-CAN	-2.02	117.28	119.68
2	B	2000	4LH	OAE-CBE-NBA	2.03	125.57	122.97
2	D	2000	4LH	OAE-CBE-NBA	2.10	125.67	122.97
2	B	2000	4LH	NAZ-C4-N3	2.23	121.17	118.67
2	D	2000	4LH	NAZ-C4-N3	2.24	121.18	118.67
2	C	2000	4LH	CAU-CAS-NBO	2.48	113.47	110.76
2	C	2000	4LH	C6-N1-C2	2.59	120.90	115.95
2	A	2000	4LH	CAU-CAS-NBO	2.60	113.59	110.76
2	D	2000	4LH	C6-N1-C2	2.61	120.94	115.95
2	A	2000	4LH	NAZ-C4-N3	2.63	121.61	118.67
2	C	2000	4LH	NAZ-C4-N3	2.64	121.62	118.67
2	B	2000	4LH	C6-N1-C2	2.69	121.08	115.95
2	A	2000	4LH	C6-N1-C2	2.70	121.11	115.95
2	D	2000	4LH	CAU-CAS-NBO	3.06	114.09	110.76
2	B	2000	4LH	CAU-CAS-NBO	3.07	114.10	110.76
2	D	2000	4LH	CAT-CAR-NBO	3.47	114.54	110.76
2	B	2000	4LH	CAT-CAR-NBO	3.50	114.57	110.76
2	A	2000	4LH	CAT-CAR-NBO	3.75	114.84	110.76
2	C	2000	4LH	CAT-CAR-NBO	3.75	114.84	110.76
2	D	2000	4LH	CAT-NBP-CAU	3.89	119.60	111.54
2	B	2000	4LH	CAT-NBP-CAU	3.99	119.80	111.54
2	A	2000	4LH	CAT-NBP-CAU	4.04	119.90	111.54
2	C	2000	4LH	CAT-NBP-CAU	4.08	119.98	111.54
2	C	2000	4LH	CAR-NBO-CAS	6.36	118.15	109.50
2	D	2000	4LH	CAR-NBO-CAS	6.53	118.38	109.50
2	B	2000	4LH	CAR-NBO-CAS	6.62	118.51	109.50
2	A	2000	4LH	CAR-NBO-CAS	6.63	118.51	109.50

There are no chirality outliers.

All (8) torsion outliers are listed below:

Mol	Chain	Res	Type	Atoms
2	D	2000	4LH	CAP-CAQ-CBE-NBA
2	A	2000	4LH	CAP-CAQ-CBE-NBA

Continued on next page...

Continued from previous page...

Mol	Chain	Res	Type	Atoms
2	C	2000	4LH	CAP-CAQ-CBE-NBA
2	B	2000	4LH	CAP-CAQ-CBE-NBA
2	D	2000	4LH	OAE-CBE-CAQ-CAP
2	A	2000	4LH	OAE-CBE-CAQ-CAP
2	B	2000	4LH	OAE-CBE-CAQ-CAP
2	C	2000	4LH	OAE-CBE-CAQ-CAP

There are no ring outliers.

4 monomers are involved in 8 short contacts:

Mol	Chain	Res	Type	Clashes	Symm-Clashes
2	A	2000	4LH	2	0
2	B	2000	4LH	2	0
2	C	2000	4LH	3	0
2	D	2000	4LH	1	0

5.7 Other polymers [i](#)

There are no such residues in this entry.

5.8 Polymer linkage issues [i](#)

There are no chain breaks in this entry.

6 Fit of model and data

6.1 Protein, DNA and RNA chains

In the following table, the column labelled ‘#RSRZ> 2’ contains the number (and percentage) of RSRZ outliers, followed by percent RSRZ outliers for the chain as percentile scores relative to all X-ray entries and entries of similar resolution. The OWAB column contains the minimum, median, 95th percentile and maximum values of the occupancy-weighted average B-factor per residue. The column labelled ‘Q< 0.9’ lists the number of (and percentage) of residues with an average occupancy less than 0.9.

Mol	Chain	Analysed	<RSRZ>	#RSRZ>2	OWAB(Å ²)	Q<0.9
1	A	271/316 (85%)	-0.12	3 (1%) 82 80	35, 57, 97, 145	0
1	B	276/316 (87%)	-0.18	2 (0%) 89 88	35, 56, 96, 150	0
1	C	271/316 (85%)	0.04	7 (2%) 59 54	31, 62, 106, 133	0
1	D	271/316 (85%)	0.09	8 (2%) 54 47	35, 65, 109, 145	0
All	All	1089/1264 (86%)	-0.04	20 (1%) 71 68	31, 60, 103, 150	0

All (20) RSRZ outliers are listed below:

Mol	Chain	Res	Type	RSRZ
1	C	1046	ALA	6.6
1	C	831	GLY	4.3
1	C	1050	LEU	4.0
1	D	831	GLY	3.9
1	A	1103	ARG	3.9
1	D	832	ASN	3.4
1	B	1099	TRP	3.2
1	C	1037	MET	3.1
1	D	1046	ALA	3.0
1	D	814	PRO	2.9
1	D	992	PHE	2.6
1	D	1028	CYS	2.5
1	D	1048	CYS	2.5
1	C	1034	PHE	2.5
1	B	814	PRO	2.4
1	A	814	PRO	2.3
1	C	1038	MET	2.3
1	D	1054	LEU	2.2
1	C	859	HIS	2.1
1	A	832	ASN	2.1

6.2 Non-standard residues in protein, DNA, RNA chains [i](#)

In the following table, the Atoms column lists the number of modelled atoms in the group and the number defined in the chemical component dictionary. LLDF column lists the quality of electron density of the group with respect to its neighbouring residues in protein, DNA or RNA chains. The B-factors column lists the minimum, median, 95th percentile and maximum values of B factors of atoms in the group. The column labelled 'Q< 0.9' lists the number of atoms with occupancy less than 0.9.

Mol	Type	Chain	Res	Atoms	RSCC	RSR	LLDF	B-factors(Å ²)	Q<0.9
1	PTR	C	980	16/17	0.90	0.18	-	70,83,103,107	0
1	PTR	C	981	16/17	0.90	0.22	-	71,77,90,91	0
1	PTR	D	980	16/17	0.89	0.25	-	81,96,119,125	0
1	PTR	A	981	16/17	0.93	0.17	-	57,66,83,84	0
1	PTR	B	981	16/17	0.94	0.16	-	54,60,75,75	0
1	PTR	D	981	16/17	0.91	0.17	-	80,85,95,97	0
1	PTR	B	980	16/17	0.93	0.16	-	52,64,83,85	0
1	PTR	A	980	16/17	0.92	0.16	-	57,68,85,87	0

6.3 Carbohydrates [i](#)

There are no carbohydrates in this entry.

6.4 Ligands [i](#)

In the following table, the Atoms column lists the number of modelled atoms in the group and the number defined in the chemical component dictionary. LLDF column lists the quality of electron density of the group with respect to its neighbouring residues in protein, DNA or RNA chains. The B-factors column lists the minimum, median, 95th percentile and maximum values of B factors of atoms in the group. The column labelled 'Q< 0.9' lists the number of atoms with occupancy less than 0.9.

Mol	Type	Chain	Res	Atoms	RSCC	RSR	LLDF	B-factors(Å ²)	Q<0.9
2	4LH	C	2000	36/36	0.96	0.18	0.46	36,51,76,78	0
2	4LH	A	2000	36/36	0.95	0.17	0.01	39,50,71,74	0
2	4LH	B	2000	36/36	0.97	0.16	-0.13	25,44,66,70	0
2	4LH	D	2000	36/36	0.96	0.18	-0.41	41,51,73,78	0

6.5 Other polymers [i](#)

There are no such residues in this entry.