



Full wwPDB X-ray Structure Validation Report ⓘ

Feb 19, 2016 – 08:57 PM GMT

PDB ID : 4ZA5
Title : Structure of *A. niger* Fdc1 with the prenylated-flavin cofactor in the iminium and ketimine forms.
Authors : Payne, K.A.P.; Leys, D.
Deposited on : 2015-04-13
Resolution : 1.10 Å(reported)

This is a Full wwPDB X-ray Structure Validation Report for a publicly released PDB entry.
We welcome your comments at validation@mail.wwpdb.org
A user guide is available at
<http://wwpdb.org/validation/2016/XrayValidationReportHelp>
with specific help available everywhere you see the ⓘ symbol.

The following versions of software and data (see [references ⓘ](#)) were used in the production of this report:

MolProbity : 4.02b-467
Mogul : 1.7.1 (RC1), CSD as537be (2016)
Xtriage (Phenix) : 1.9-1692
EDS : rb-20026982
Percentile statistics : 20151230.v01 (using entries in the PDB archive December 30th 2015)
Refmac : 5.8.0135
CCP4 : 6.5.0
Ideal geometry (proteins) : Engh & Huber (2001)
Ideal geometry (DNA, RNA) : Parkinson et al. (1996)
Validation Pipeline (wwPDB-VP) : rb-20026982

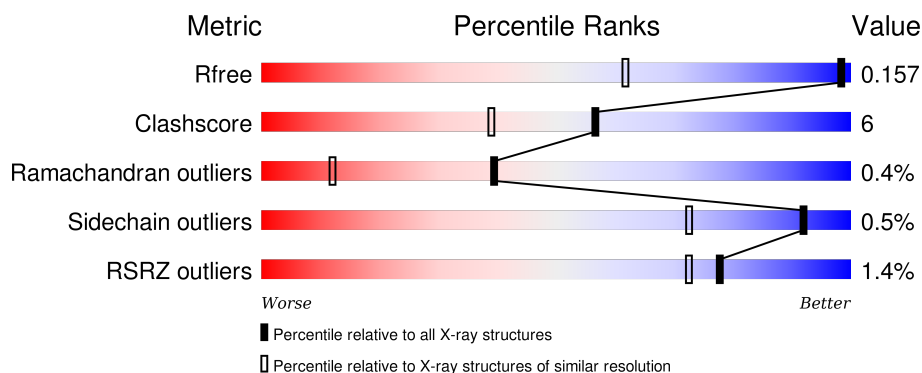
1 Overall quality at a glance

The following experimental techniques were used to determine the structure:

X-RAY DIFFRACTION

The reported resolution of this entry is 1.10 Å.

Percentile scores (ranging between 0-100) for global validation metrics of the entry are shown in the following graphic. The table shows the number of entries on which the scores are based.



Metric	Whole archive (#Entries)	Similar resolution (#Entries, resolution range(Å))
R_{free}	91344	1006 (1.14-1.06)
Clashscore	102246	1055 (1.14-1.06)
Ramachandran outliers	100387	1016 (1.14-1.06)
Sidechain outliers	100360	1014 (1.14-1.06)
RSRZ outliers	91569	1009 (1.14-1.06)

The table below summarises the geometric issues observed across the polymeric chains and their fit to the electron density. The red, orange, yellow and green segments on the lower bar indicate the fraction of residues that contain outliers for ≥ 3 , 2, 1 and 0 types of geometric quality criteria. A grey segment represents the fraction of residues that are not modelled. The numeric value for each fraction is indicated below the corresponding segment, with a dot representing fractions $\leq 5\%$. The upper red bar (where present) indicates the fraction of residues that have poor fit to the electron density. The numeric value is given above the bar.

Mol	Chain	Length	Quality of chain
1	A	508	<div> <div></div> <div>84%</div> <div>13%</div> <div>...</div> </div>

The following table lists non-polymeric compounds, carbohydrate monomers and non-standard residues in protein, DNA, RNA chains that are outliers for geometric or electron-density-fit criteria:

Mol	Type	Chain	Res	Chirality	Geometry	Clashes	Electron density
4	MN	A	603[A]	-	-	-	X

Continued on next page...

Continued from previous page...

Mol	Type	Chain	Res	Chirality	Geometry	Clashes	Electron density
4	MN	A	603[B]	-	-	-	X
5	K	A	604[A]	-	-	-	X

2 Entry composition

There are 6 unique types of molecules in this entry. The entry contains 4692 atoms, of which 0 are hydrogens and 0 are deuteriums.

In the tables below, the ZeroOcc column contains the number of atoms modelled with zero occupancy, the AltConf column contains the number of residues with at least one atom in alternate conformation and the Trace column contains the number of residues modelled with at most 2 atoms.

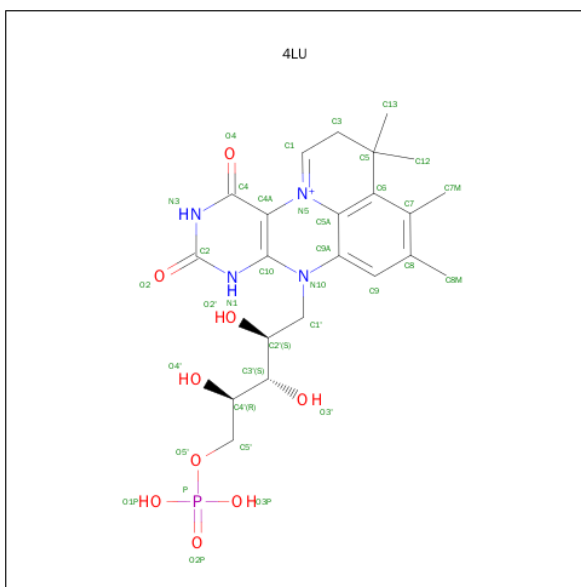
- Molecule 1 is a protein called Fdc1.

Mol	Chain	Residues	Atoms					ZeroOcc	AltConf	Trace
			Total	C	N	O	S			
1	A	499	4144	2623	711	779	31	0	41	1

There are 8 discrepancies between the modelled and reference sequences:

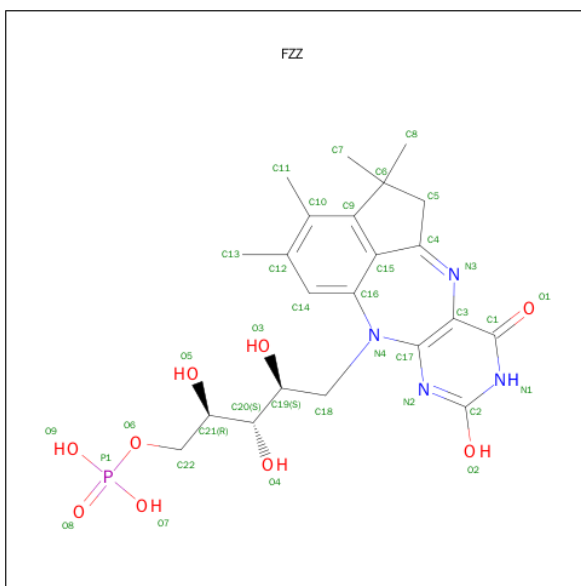
Chain	Residue	Modelled	Actual	Comment	Reference
A	501	LEU	-	expression tag	UNP A2QHE5
A	502	GLU	-	expression tag	UNP A2QHE5
A	503	HIS	-	expression tag	UNP A2QHE5
A	504	HIS	-	expression tag	UNP A2QHE5
A	505	HIS	-	expression tag	UNP A2QHE5
A	506	HIS	-	expression tag	UNP A2QHE5
A	507	HIS	-	expression tag	UNP A2QHE5
A	508	HIS	-	expression tag	UNP A2QHE5

- Molecule 2 is 1-deoxy-5-O-phosphono-1-(3,3,4,5-tetramethyl-9,11-dioxo-2,3,8,9,10,11-hexahydro-7H-quinolino[1,8-fg]pteridin-12-ium-7-yl)-D-ribitol (three-letter code: 4LU) (formula: $C_{22}H_{30}N_4O_9P$).



Mol	Chain	Residues	Atoms					ZeroOcc	AltConf
2	A	1	Total	C	N	O	P	0	1
			36	22	4	9	1		

- Molecule 3 is 1-deoxy-5-O-phosphono-1-[(10aR)-2,2,3,4-tetramethyl-8,10-dioxo-1,2,8,9,10,10a-hexahydro-6H-indeno[1,7-e]pyrimido[4,5-b][1,4]diazepin-6-yl]-D-ribitol (three-letter code: FZZ) (formula: C₂₂H₂₉N₄O₉P).



Mol	Chain	Residues	Atoms					ZeroOcc	AltConf
3	A	1	Total	C	N	O	P	0	1
			36	22	4	9	1		

- Molecule 4 is MANGANESE (II) ION (three-letter code: MN) (formula: Mn).

Mol	Chain	Residues	Atoms		ZeroOcc	AltConf
4	A	1	Total 2	Mn 2	0	1

- Molecule 5 is POTASSIUM ION (three-letter code: K) (formula: K).

Mol	Chain	Residues	Atoms		ZeroOcc	AltConf
5	A	2	Total 3	K 3	0	1

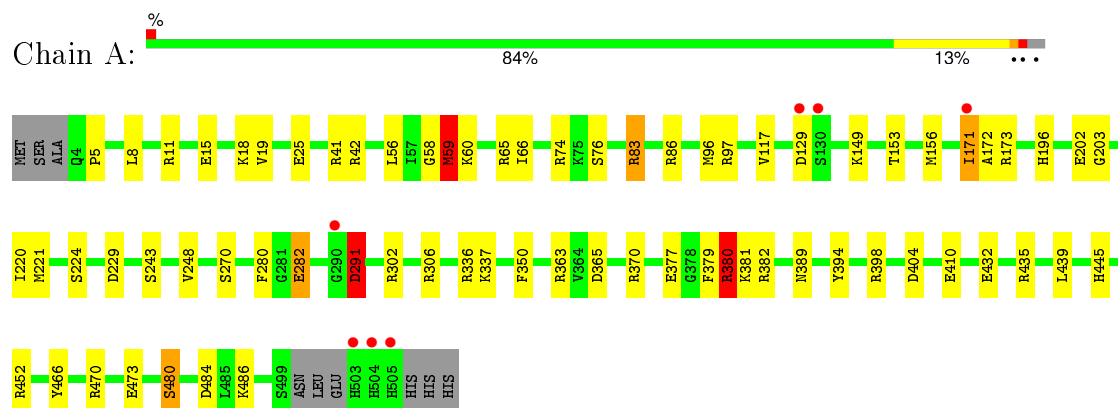
- Molecule 6 is water.

Mol	Chain	Residues	Atoms		ZeroOcc	AltConf
6	A	471	Total 471	O 471	0	0

3 Residue-property plots

These plots are drawn for all protein, RNA and DNA chains in the entry. The first graphic for a chain summarises the proportions of errors displayed in the second graphic. The second graphic shows the sequence view annotated by issues in geometry and electron density. Residues are color-coded according to the number of geometric quality criteria for which they contain at least one outlier: green = 0, yellow = 1, orange = 2 and red = 3 or more. A red dot above a residue indicates a poor fit to the electron density ($RSRZ > 2$). Stretches of 2 or more consecutive residues without any outlier are shown as a green connector. Residues present in the sample, but not in the model, are shown in grey.

• Molecule 1: Fdc1



4 Data and refinement statistics

Property	Value	Source
Space group	P 21 21 2	Depositor
Cell constants a, b, c, α , β , γ	96.02Å 63.79Å 87.72Å 90.00° 90.00° 90.00°	Depositor
Resolution (Å)	48.01 – 1.10 48.01 – 1.10	Depositor EDS
% Data completeness (in resolution range)	100.0 (48.01-1.10) 99.5 (48.01-1.10)	Depositor EDS
R_{merge}	0.03	Depositor
R_{sym}	(Not available)	Depositor
$\langle I/\sigma(I) \rangle$ ¹	2.08 (at 1.10Å)	Xtriage
Refinement program	REFMAC 5.5.0102	Depositor
R, R_{free}	0.144 , 0.156 0.143 , 0.157	Depositor DCC
R_{free} test set	10689 reflections (5.19%)	DCC
Wilson B-factor (Å ²)	8.0	Xtriage
Anisotropy	1.580	Xtriage
Bulk solvent k_{sol} (e/Å ³), B_{sol} (Å ²)	0.34 , 52.7	EDS
Estimated twinning fraction	No twinning to report.	Xtriage
L-test for twinning ²	$\langle L \rangle = 0.47$, $\langle L^2 \rangle = 0.30$	Xtriage
Outliers	0 of 216714 reflections	Xtriage
F_o, F_c correlation	0.98	EDS
Total number of atoms	4692	wwPDB-VP
Average B, all atoms (Å ²)	14.0	wwPDB-VP

Xtriage's analysis on translational NCS is as follows: *The largest off-origin peak in the Patterson function is 4.13% of the height of the origin peak. No significant pseudotranslation is detected.*

¹Intensities estimated from amplitudes.

²Theoretical values of $\langle |L| \rangle$, $\langle L^2 \rangle$ for acentric reflections are 0.5, 0.375 respectively for untwinned datasets, and 0.333, 0.2 for perfectly twinned datasets.

5 Model quality i

5.1 Standard geometry i

Bond lengths and bond angles in the following residue types are not validated in this section: FZZ, K, MN, 4LU

The Z score for a bond length (or angle) is the number of standard deviations the observed value is removed from the expected value. A bond length (or angle) with $|Z| > 5$ is considered an outlier worth inspection. RMSZ is the root-mean-square of all Z scores of the bond lengths (or angles).

Mol	Chain	Bond lengths		Bond angles	
		RMSZ	$\# Z > 5$	RMSZ	$\# Z > 5$
1	A	1.35	34/4245 (0.8%)	1.27	37/5767 (0.6%)

Chiral center outliers are detected by calculating the chiral volume of a chiral center and verifying if the center is modelled as a planar moiety or with the opposite hand. A planarity outlier is detected by checking planarity of atoms in a peptide group, atoms in a mainchain group or atoms of a sidechain that are expected to be planar.

Mol	Chain	#Chirality outliers	#Planarity outliers
1	A	0	5

All (34) bond length outliers are listed below:

Mol	Chain	Res	Type	Atoms	Z	Observed(Å)	Ideal(Å)
1	A	380	ARG	CA-CB	10.04	1.76	1.53
1	A	65	ARG	CZ-NH1	-9.45	1.20	1.33
1	A	377[A]	GLU	CD-OE1	9.13	1.35	1.25
1	A	377[B]	GLU	CD-OE1	9.13	1.35	1.25
1	A	480[A]	SER	CB-OG	9.03	1.53	1.42
1	A	480[B]	SER	CB-OG	9.03	1.53	1.42
1	A	389	ASN	CG-ND2	-7.26	1.14	1.32
1	A	65	ARG	NE-CZ	7.21	1.42	1.33
1	A	337	LYS	CE-NZ	-7.20	1.31	1.49
1	A	202	GLU	CD-OE2	7.01	1.33	1.25
1	A	291	ASP	CB-CG	-7.01	1.37	1.51
1	A	473	GLU	CD-OE1	6.96	1.33	1.25
1	A	282	GLU	CD-OE2	6.93	1.33	1.25
1	A	377[A]	GLU	CD-OE2	6.93	1.33	1.25
1	A	377[B]	GLU	CD-OE2	6.93	1.33	1.25
1	A	243	SER	CB-OG	6.79	1.51	1.42
1	A	398	ARG	CZ-NH1	-6.62	1.24	1.33
1	A	410	GLU	CG-CD	6.52	1.61	1.51

Continued on next page...

Continued from previous page...

Mol	Chain	Res	Type	Atoms	Z	Observed(Å)	Ideal(Å)
1	A	370	ARG	CZ-NH2	6.39	1.41	1.33
1	A	221[A]	MET	CG-SD	-6.24	1.65	1.81
1	A	221[B]	MET	CG-SD	-6.24	1.65	1.81
1	A	486	LYS	CD-CE	-6.15	1.35	1.51
1	A	282	GLU	CD-OE1	6.12	1.32	1.25
1	A	473	GLU	CA-CB	6.01	1.67	1.53
1	A	203	GLY	CA-C	-5.73	1.42	1.51
1	A	466	TYR	CE2-CZ	-5.67	1.31	1.38
1	A	452	ARG	CG-CD	5.63	1.66	1.51
1	A	18[A]	LYS	CD-CE	5.52	1.65	1.51
1	A	18[B]	LYS	CD-CE	5.52	1.65	1.51
1	A	65	ARG	CD-NE	-5.50	1.37	1.46
1	A	202	GLU	CD-OE1	5.50	1.31	1.25
1	A	243	SER	CA-CB	5.47	1.61	1.52
1	A	394	TYR	CD2-CE2	-5.44	1.31	1.39
1	A	410	GLU	CD-OE1	5.32	1.31	1.25

All (37) bond angle outliers are listed below:

Mol	Chain	Res	Type	Atoms	Z	Observed(°)	Ideal(°)
1	A	398	ARG	NE-CZ-NH1	14.63	127.62	120.30
1	A	398	ARG	NE-CZ-NH2	-13.21	113.69	120.30
1	A	404	ASP	CB-CG-OD2	12.07	129.16	118.30
1	A	65	ARG	NE-CZ-NH2	-10.68	114.96	120.30
1	A	11	ARG	NE-CZ-NH1	10.01	125.31	120.30
1	A	291	ASP	CB-CG-OD1	-9.13	110.09	118.30
1	A	380	ARG	CG-CD-NE	8.50	129.66	111.80
1	A	229	ASP	CB-CG-OD1	7.96	125.46	118.30
1	A	382	ARG	NE-CZ-NH2	-7.85	116.38	120.30
1	A	74	ARG	NE-CZ-NH2	-7.64	116.48	120.30
1	A	337	LYS	CD-CE-NZ	7.16	128.16	111.70
1	A	365	ASP	CB-CG-OD1	6.99	124.59	118.30
1	A	377[A]	GLU	CG-CD-OE2	-6.86	104.59	118.30
1	A	377[B]	GLU	CG-CD-OE2	-6.86	104.59	118.30
1	A	484[A]	ASP	CB-CG-OD1	6.83	124.45	118.30
1	A	484[B]	ASP	CB-CG-OD1	6.83	124.45	118.30
1	A	86	ARG	NE-CZ-NH2	-6.47	117.07	120.30
1	A	380	ARG	NE-CZ-NH1	6.41	123.51	120.30
1	A	435	ARG	NE-CZ-NH2	-6.23	117.19	120.30
1	A	306	ARG	NE-CZ-NH2	-6.06	117.27	120.30
1	A	41	ARG	NE-CZ-NH1	-6.00	117.30	120.30
1	A	398	ARG	CD-NE-CZ	5.96	131.95	123.60

Continued on next page...

Continued from previous page...

Mol	Chain	Res	Type	Atoms	Z	Observed(°)	Ideal(°)
1	A	229	ASP	CB-CG-OD2	-5.89	113.00	118.30
1	A	156	MET	N-CA-CB	-5.88	100.01	110.60
1	A	65	ARG	NH1-CZ-NH2	5.74	125.72	119.40
1	A	432	GLU	OE1-CD-OE2	-5.57	116.61	123.30
1	A	173	ARG	NE-CZ-NH2	-5.41	117.60	120.30
1	A	302	ARG	NE-CZ-NH2	-5.28	117.66	120.30
1	A	172[A]	ALA	N-CA-CB	5.24	117.44	110.10
1	A	172[B]	ALA	N-CA-CB	5.24	117.44	110.10
1	A	336	ARG	NE-CZ-NH1	-5.15	117.73	120.30
1	A	379	PHE	CB-CG-CD2	5.13	124.39	120.80
1	A	15[A]	GLU	OE1-CD-OE2	-5.07	117.22	123.30
1	A	15[B]	GLU	OE1-CD-OE2	-5.07	117.22	123.30
1	A	382	ARG	CG-CD-NE	-5.02	101.25	111.80
1	A	83	ARG	CB-CA-C	5.01	120.42	110.40
1	A	97	ARG	CD-NE-CZ	5.00	130.61	123.60

There are no chirality outliers.

All (5) planarity outliers are listed below:

Mol	Chain	Res	Type	Group
1	A	171[B]	ILE	Mainchain
1	A	291	ASP	Sidechain
1	A	380	ARG	Sidechain
1	A	59[B]	MET	Mainchain
1	A	83	ARG	Sidechain

5.2 Too-close contacts ⓘ

In the following table, the Non-H and H(model) columns list the number of non-hydrogen atoms and hydrogen atoms in the chain respectively. The H(added) column lists the number of hydrogen atoms added and optimized by MolProbity. The Clashes column lists the number of clashes within the asymmetric unit, whereas Symm-Clashes lists symmetry related clashes.

Mol	Chain	Non-H	H(model)	H(added)	Clashes	Symm-Clashes
1	A	4144	0	4028	39	0
2	A	36	0	18	12	0
3	A	36	0	13	12	0
4	A	2	0	0	0	0
5	A	3	0	0	0	0
6	A	471	0	0	19	2
All	All	4692	0	4059	51	2

The all-atom clashscore is defined as the number of clashes found per 1000 atoms (including hydrogen atoms). The all-atom clashscore for this structure is 6.

All (51) close contacts within the same asymmetric unit are listed below, sorted by their clash magnitude.

Atom-1	Atom-2	Interatomic distance (Å)	Clash overlap (Å)
1:A:380:ARG:CB	1:A:380:ARG:CA	1.76	1.59
1:A:381[A]:LYS:HG3	6:A:711:HOH:O	1.49	1.12
2:A:601[A]:4LU:C12	3:A:602[A]:FZZ:H13	1.93	0.97
1:A:171[B]:ILE:O	1:A:171[B]:ILE:HG22	1.61	0.97
2:A:601[A]:4LU:H13	3:A:602[A]:FZZ:C11	1.95	0.95
2:A:601[A]:4LU:C12	3:A:602[A]:FZZ:C11	2.46	0.93
1:A:59[A]:MET:SD	6:A:757:HOH:O	2.25	0.93
2:A:601[A]:4LU:H13	3:A:602[A]:FZZ:H12	1.59	0.85
1:A:59[A]:MET:CE	6:A:757:HOH:O	2.25	0.83
2:A:601[A]:4LU:H13	2:A:601[A]:4LU:H14	1.55	0.82
1:A:171[A]:ILE:HD12	1:A:224[A]:SER:OG	1.85	0.76
1:A:59[A]:MET:HE3	6:A:757:HOH:O	1.84	0.76
1:A:380:ARG:CA	1:A:380:ARG:CG	2.64	0.75
1:A:380:ARG:C	1:A:380:ARG:CB	2.52	0.75
2:A:601[A]:4LU:H12	3:A:602[A]:FZZ:H13	1.68	0.74
1:A:381[A]:LYS:HE3	6:A:711:HOH:O	1.94	0.68
1:A:196[B]:HIS:HE1	1:A:270:SER:O	1.82	0.61
1:A:25:GLU:OE1	6:A:701:HOH:O	2.16	0.61
1:A:280:PHE:O	1:A:282:GLU:HG3	2.02	0.59
1:A:5:PRO:HG2	1:A:8:LEU:HD12	1.86	0.58
2:A:601[A]:4LU:O3'	3:A:602[A]:FZZ:N2	2.33	0.58
1:A:381[A]:LYS:CG	6:A:711:HOH:O	2.26	0.56
2:A:601[A]:4LU:H25	3:A:602[A]:FZZ:C2	2.20	0.55
1:A:171[B]:ILE:CG2	1:A:171[B]:ILE:O	2.35	0.55
2:A:601[A]:4LU:N1	3:A:602[A]:FZZ:C19	2.70	0.55
1:A:380:ARG:CB	1:A:380:ARG:N	2.65	0.55
1:A:381[A]:LYS:HE2	6:A:1083:HOH:O	2.09	0.53
1:A:153:THR:O	3:A:602[A]:FZZ:H12	2.11	0.50
2:A:601[A]:4LU:H7	3:A:602[A]:FZZ:C19	2.25	0.50
1:A:445:HIS:HE1	6:A:974:HOH:O	1.95	0.49
2:A:601[A]:4LU:H13	3:A:602[A]:FZZ:H13	1.65	0.49
1:A:117:VAL:HG23	1:A:248[B]:VAL:HG22	1.95	0.48
1:A:196[B]:HIS:CE1	1:A:270:SER:O	2.65	0.48
1:A:196[A]:HIS:HE1	1:A:270:SER:O	1.97	0.47
1:A:381[A]:LYS:CE	6:A:711:HOH:O	2.59	0.47
1:A:282:GLU:CD	1:A:439[B]:LEU:HD13	2.35	0.47
1:A:19[A]:VAL:HG21	6:A:1096:HOH:O	2.16	0.45

Continued on next page...

Continued from previous page...

Atom-1	Atom-2	Interatomic distance (Å)	Clash overlap (Å)
1:A:42[A]:ARG:NH1	6:A:703:HOH:O	2.38	0.45
1:A:149[A]:LYS:HD3	6:A:972:HOH:O	2.17	0.44
1:A:56[B]:LEU:HD11	1:A:66:ILE:HG13	2.00	0.44
1:A:59[A]:MET:HG2	6:A:759:HOH:O	2.18	0.43
1:A:363:ARG:NH1	6:A:707:HOH:O	2.51	0.42
1:A:381[A]:LYS:CD	6:A:711:HOH:O	2.63	0.42
1:A:58:GLY:O	1:A:59[B]:MET:C	2.54	0.42
1:A:76[B]:SER:HB3	6:A:987:HOH:O	2.19	0.42
1:A:129[A]:ASP:O	1:A:129[A]:ASP:CG	2.56	0.42
1:A:96[B]:MET:HG2	1:A:350:PHE:CE1	2.54	0.42
1:A:149[A]:LYS:CD	6:A:972:HOH:O	2.69	0.41
1:A:470:ARG:NE	6:A:712:HOH:O	2.53	0.41
1:A:171[A]:ILE:HD11	1:A:220:ILE:HG13	2.02	0.41
2:A:601[A]:4LU:N1	3:A:602[A]:FZZ:O3	2.55	0.40

All (2) symmetry-related close contacts are listed below. The label for Atom-2 includes the symmetry operator and encoded unit-cell translations to be applied.

Atom-1	Atom-2	Interatomic distance (Å)	Clash overlap (Å)
6:A:768:HOH:O	6:A:768:HOH:O[2_655]	1.16	1.04
6:A:734:HOH:O	6:A:945:HOH:O[2_655]	1.56	0.64

5.3 Torsion angles [i](#)

5.3.1 Protein backbone [i](#)

In the following table, the Percentiles column shows the percent Ramachandran outliers of the chain as a percentile score with respect to all X-ray entries followed by that with respect to entries of similar resolution.

The Analysed column shows the number of residues for which the backbone conformation was analysed, and the total number of residues.

Mol	Chain	Analysed	Favoured	Allowed	Outliers	Percentiles
1	A	536/508 (106%)	518 (97%)	15 (3%)	3 (1%)	30 6

All (3) Ramachandran outliers are listed below:

Mol	Chain	Res	Type
1	A	59[A]	MET

Continued on next page...

Continued from previous page...

Mol	Chain	Res	Type
1	A	59[B]	MET
1	A	60	LYS

5.3.2 Protein sidechains ⓘ

In the following table, the Percentiles column shows the percent sidechain outliers of the chain as a percentile score with respect to all X-ray entries followed by that with respect to entries of similar resolution.

The Analysed column shows the number of residues for which the sidechain conformation was analysed, and the total number of residues.

Mol	Chain	Analysed	Rotameric	Outliers	Percentiles
1	A	447/430 (104%)	444 (99%)	3 (1%)	88 63

All (3) residues with a non-rotameric sidechain are listed below:

Mol	Chain	Res	Type
1	A	291	ASP
1	A	480[A]	SER
1	A	480[B]	SER

Some sidechains can be flipped to improve hydrogen bonding and reduce clashes. There are no such sidechains identified.

5.3.3 RNA ⓘ

There are no RNA molecules in this entry.

5.4 Non-standard residues in protein, DNA, RNA chains ⓘ

There are no non-standard protein/DNA/RNA residues in this entry.

5.5 Carbohydrates ⓘ

There are no carbohydrates in this entry.

5.6 Ligand geometry

Of 7 ligands modelled in this entry, 5 are monoatomic - leaving 2 for Mogul analysis.

In the following table, the Counts columns list the number of bonds (or angles) for which Mogul statistics could be retrieved, the number of bonds (or angles) that are observed in the model and the number of bonds (or angles) that are defined in the chemical component dictionary. The Link column lists molecule types, if any, to which the group is linked. The Z score for a bond length (or angle) is the number of standard deviations the observed value is removed from the expected value. A bond length (or angle) with $|Z| > 2$ is considered an outlier worth inspection. RMSZ is the root-mean-square of all Z scores of the bond lengths (or angles).

Mol	Type	Chain	Res	Link	Bond lengths			Bond angles		
					Counts	RMSZ	# Z > 2	Counts	RMSZ	# Z > 2
2	4LU	A	601[A]	5,4	32,39,39	2.37	11 (34%)	33,62,62	2.69	12 (36%)
3	FZZ	A	602[A]	-	31,39,39	2.09	9 (29%)	35,62,62	3.01	15 (42%)

In the following table, the Chirals column lists the number of chiral outliers, the number of chiral centers analysed, the number of these observed in the model and the number defined in the chemical component dictionary. Similar counts are reported in the Torsion and Rings columns. '-' means no outliers of that kind were identified.

Mol	Type	Chain	Res	Link	Chirals	Torsions	Rings
2	4LU	A	601[A]	5,4	-	0/18/30/30	0/3/4/4
3	FZZ	A	602[A]	-	-	0/16/29/29	0/3/4/4

All (20) bond length outliers are listed below:

Mol	Chain	Res	Type	Atoms	Z	Observed(Å)	Ideal(Å)
3	A	602[A]	FZZ	C18-N4	-5.86	1.42	1.48
2	A	601[A]	4LU	C5A-C9A	-5.34	1.32	1.40
3	A	602[A]	FZZ	O3-C19	-4.63	1.33	1.43
2	A	601[A]	4LU	C5-C6	-4.42	1.50	1.54
2	A	601[A]	4LU	C2'-C3'	-3.41	1.46	1.53
2	A	601[A]	4LU	C1'-N10	-3.17	1.45	1.48
3	A	602[A]	FZZ	C21-C20	-2.60	1.48	1.53
3	A	602[A]	FZZ	P1-O7	-2.18	1.47	1.54
3	A	602[A]	FZZ	O5-C21	2.09	1.48	1.43
3	A	602[A]	FZZ	C9-C15	2.09	1.44	1.40
2	A	601[A]	4LU	C9-C8	2.26	1.44	1.37
3	A	602[A]	FZZ	O2-C2	2.57	1.34	1.24
3	A	602[A]	FZZ	C1-C3	2.72	1.46	1.41
2	A	601[A]	4LU	O5'-C5'	2.95	1.56	1.44
2	A	601[A]	4LU	O2'-C2'	3.06	1.50	1.43
2	A	601[A]	4LU	C4-N3	3.07	1.38	1.33

Continued on next page...

Continued from previous page...

Mol	Chain	Res	Type	Atoms	Z	Observed(Å)	Ideal(Å)
2	A	601[A]	4LU	C13-C5	3.46	1.63	1.53
3	A	602[A]	FZZ	C5-C6	3.63	1.59	1.56
2	A	601[A]	4LU	C6-C7	4.45	1.50	1.40
2	A	601[A]	4LU	C9A-N10	4.66	1.45	1.38

All (27) bond angle outliers are listed below:

Mol	Chain	Res	Type	Atoms	Z	Observed(°)	Ideal(°)
3	A	602[A]	FZZ	C12-C10-C9	-7.36	113.00	119.38
3	A	602[A]	FZZ	C3-C1-N1	-5.91	115.80	123.52
2	A	601[A]	4LU	C4A-C4-N3	-5.90	115.81	123.52
3	A	602[A]	FZZ	C1-C3-C17	-4.51	117.05	119.94
2	A	601[A]	4LU	N3-C2-N1	-3.96	121.02	127.69
3	A	602[A]	FZZ	C8-C6-C5	-3.77	103.19	109.02
2	A	601[A]	4LU	O2'-C2'-C1'	-3.34	101.67	109.93
2	A	601[A]	4LU	C13-C5-C12	-3.27	100.43	108.56
2	A	601[A]	4LU	C13-C5-C6	-3.23	104.85	111.78
2	A	601[A]	4LU	C4A-N5-C5A	-3.10	115.45	120.96
3	A	602[A]	FZZ	C7-C6-C5	-2.92	104.49	109.02
3	A	602[A]	FZZ	C14-C16-C15	-2.83	116.34	120.63
3	A	602[A]	FZZ	N2-C2-N1	-2.72	123.47	127.75
3	A	602[A]	FZZ	O6-P1-O8	-2.66	100.39	107.08
2	A	601[A]	4LU	C13-C5-C3	-2.16	105.12	108.93
3	A	602[A]	FZZ	C13-C12-C14	-2.01	114.65	120.33
2	A	601[A]	4LU	O1P-P-O2P	2.11	117.51	110.63
3	A	602[A]	FZZ	C11-C10-C12	2.19	124.09	119.81
2	A	601[A]	4LU	C12-C5-C6	2.78	117.75	111.78
2	A	601[A]	4LU	C8-C7-C6	3.20	122.15	119.38
3	A	602[A]	FZZ	C5-C6-C9	3.34	105.39	102.29
3	A	602[A]	FZZ	C1-N1-C2	3.64	122.62	115.52
3	A	602[A]	FZZ	O3-C19-C18	4.45	120.91	109.93
2	A	601[A]	4LU	C1'-N10-C9A	5.41	125.10	118.83
3	A	602[A]	FZZ	C8-C6-C7	6.09	116.95	109.14
3	A	602[A]	FZZ	C14-C12-C10	6.57	127.33	119.26
2	A	601[A]	4LU	C4-N3-C2	8.22	122.02	115.16

There are no chirality outliers.

There are no torsion outliers.

There are no ring outliers.

2 monomers are involved in 13 short contacts:

Mol	Chain	Res	Type	Clashes	Symm-Clashes
2	A	601[A]	4LU	12	0
3	A	602[A]	FZZ	12	0

5.7 Other polymers [i](#)

There are no such residues in this entry.

5.8 Polymer linkage issues [i](#)

There are no chain breaks in this entry.

6 Fit of model and data ⓘ

6.1 Protein, DNA and RNA chains ⓘ

In the following table, the column labelled ‘#RSRZ> 2’ contains the number (and percentage) of RSRZ outliers, followed by percent RSRZ outliers for the chain as percentile scores relative to all X-ray entries and entries of similar resolution. The OWAB column contains the minimum, median, 95th percentile and maximum values of the occupancy-weighted average B-factor per residue. The column labelled ‘Q< 0.9’ lists the number of (and percentage) of residues with an average occupancy less than 0.9.

Mol	Chain	Analysed	<RSRZ>	#RSRZ>2	OWAB(Å ²)	Q<0.9
1	A	499/508 (98%)	0.00	7 (1%) 78 72	8, 11, 21, 31	0

All (7) RSRZ outliers are listed below:

Mol	Chain	Res	Type	RSRZ
1	A	503	HIS	5.8
1	A	505	HIS	3.9
1	A	504	HIS	3.0
1	A	129[A]	ASP	2.8
1	A	130	SER	2.5
1	A	171[A]	ILE	2.2
1	A	290[A]	GLY	2.0

6.2 Non-standard residues in protein, DNA, RNA chains ⓘ

There are no non-standard protein/DNA/RNA residues in this entry.

6.3 Carbohydrates ⓘ

There are no carbohydrates in this entry.

6.4 Ligands ⓘ

In the following table, the Atoms column lists the number of modelled atoms in the group and the number defined in the chemical component dictionary. LLDF column lists the quality of electron density of the group with respect to its neighbouring residues in protein, DNA or RNA chains. The B-factors column lists the minimum, median, 95th percentile and maximum values of B factors of atoms in the group. The column labelled ‘Q< 0.9’ lists the number of atoms with occupancy less than 0.9.

Mol	Type	Chain	Res	Atoms	RSCC	RSR	LLDF	B-factors(\AA^2)	Q<0.9
4	MN	A	603[B]	1/1	1.00	0.09	2.87	8,8,8,8	1
4	MN	A	603[A]	1/1	1.00	0.09	2.87	6,6,6,6	1
5	K	A	604[A]	1/1	0.99	0.12	2.00	6,6,6,6	1
5	K	A	604[B]	1/1	0.99	0.12	1.90	10,10,10,10	1
2	4LU	A	601[A]	36/36	0.99	0.09	0.53	6,8,14,18	36
3	FZZ	A	602[A]	36/36	0.99	0.08	0.31	6,8,11,13	36
5	K	A	605	1/1	1.00	0.06	-1.09	8,8,8,8	0

6.5 Other polymers [i](#)

There are no such residues in this entry.