



Full wwPDB X-ray Structure Validation Report ⓘ

Feb 1, 2016 – 12:03 AM GMT

PDB ID : 1ZCB
Title : Crystal structure of G alpha 13 in complex with GDP
Authors : Nance, M.R.; Tesmer, J.J.G.
Deposited on : 2005-04-11
Resolution : 2.00 Å(reported)

This is a Full wwPDB X-ray Structure Validation Report for a publicly released PDB entry.
We welcome your comments at validation@mail.wwpdb.org
A user guide is available at
<http://wwpdb.org/validation/2016/XrayValidationReportHelp>
with specific help available everywhere you see the ⓘ symbol.

The following versions of software and data (see [references ⓘ](#)) were used in the production of this report:

MolProbity : 4.02b-467
Mogul : 1.7 (RC4), CSD as536be (2015)
Xtriage (Phenix) : 1.9-1692
EDS : rb-20026688
Percentile statistics : 20151230.v01 (using entries in the PDB archive December 30th 2015)
Refmac : 5.8.0135
CCP4 : 6.5.0
Ideal geometry (proteins) : Engh & Huber (2001)
Ideal geometry (DNA, RNA) : Parkinson et al. (1996)
Validation Pipeline (wwPDB-VP) : trunk26865

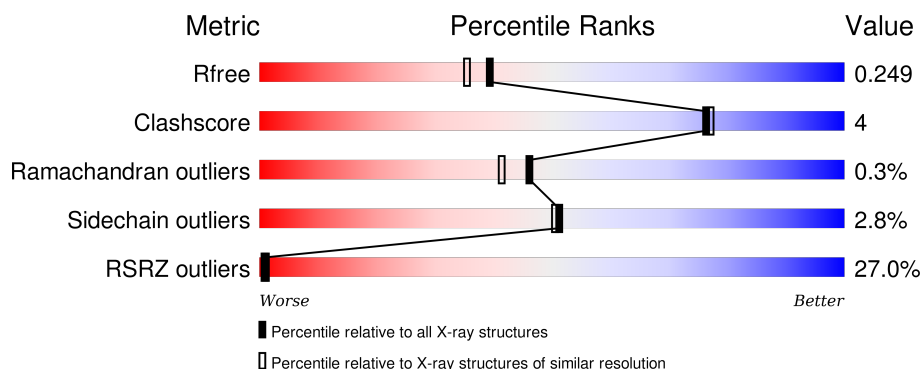
1 Overall quality at a glance

The following experimental techniques were used to determine the structure:

X-RAY DIFFRACTION

The reported resolution of this entry is 2.00 Å.

Percentile scores (ranging between 0-100) for global validation metrics of the entry are shown in the following graphic. The table shows the number of entries on which the scores are based.



Metric	Whole archive (#Entries)	Similar resolution (#Entries, resolution range(Å))
R_{free}	91344	6249 (2.00-2.00)
Clashscore	102246	7340 (2.00-2.00)
Ramachandran outliers	100387	7248 (2.00-2.00)
Sidechain outliers	100360	7247 (2.00-2.00)
RSRZ outliers	91569	6262 (2.00-2.00)

The table below summarises the geometric issues observed across the polymeric chains and their fit to the electron density. The red, orange, yellow and green segments on the lower bar indicate the fraction of residues that contain outliers for ≥ 3 , 2, 1 and 0 types of geometric quality criteria. A grey segment represents the fraction of residues that are not modelled. The numeric value for each fraction is indicated below the corresponding segment, with a dot representing fractions $\leq 5\%$. The upper red bar (where present) indicates the fraction of residues that have poor fit to the electron density. The numeric value is given above the bar.

Mol	Chain	Length	Quality of chain
1	A	362	<div> <div>24%</div> <div>76%</div> <div>11%</div> <div>12%</div> </div>

2 Entry composition [i](#)

There are 3 unique types of molecules in this entry. The entry contains 2698 atoms, of which 0 are hydrogens and 0 are deuteriums.

In the tables below, the ZeroOcc column contains the number of atoms modelled with zero occupancy, the AltConf column contains the number of residues with at least one atom in alternate conformation and the Trace column contains the number of residues modelled with at most 2 atoms.

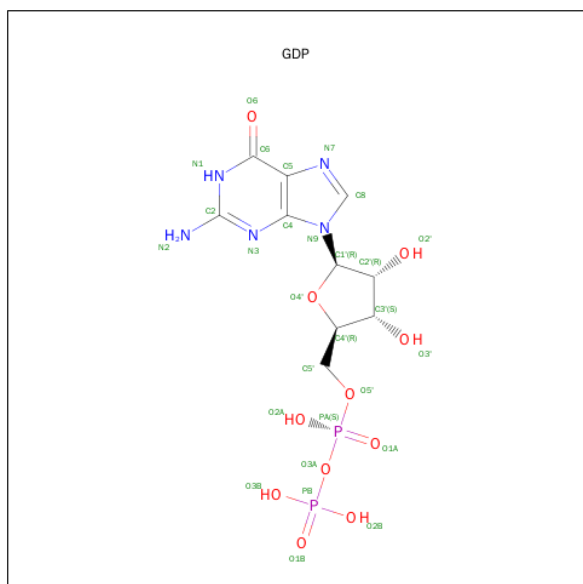
- Molecule 1 is a protein called G alpha i/13.

Mol	Chain	Residues	Atoms					ZeroOcc	AltConf	Trace
1	A	318	Total	C	N	O	S	0	1	0
			2618	1670	459	479	10			

There are 3 discrepancies between the modelled and reference sequences:

Chain	Residue	Modelled	Actual	Comment	Reference
A	44	ARG	-	CLONING ARTIFACT	UNP P27601
A	45	SER	-	CLONING ARTIFACT	UNP P27601
A	46	ALA	-	CLONING ARTIFACT	UNP P27601

- Molecule 2 is GUANOSINE-5'-DIPHOSPHATE (three-letter code: GDP) (formula: $C_{10}H_{15}N_5O_{11}P_2$).



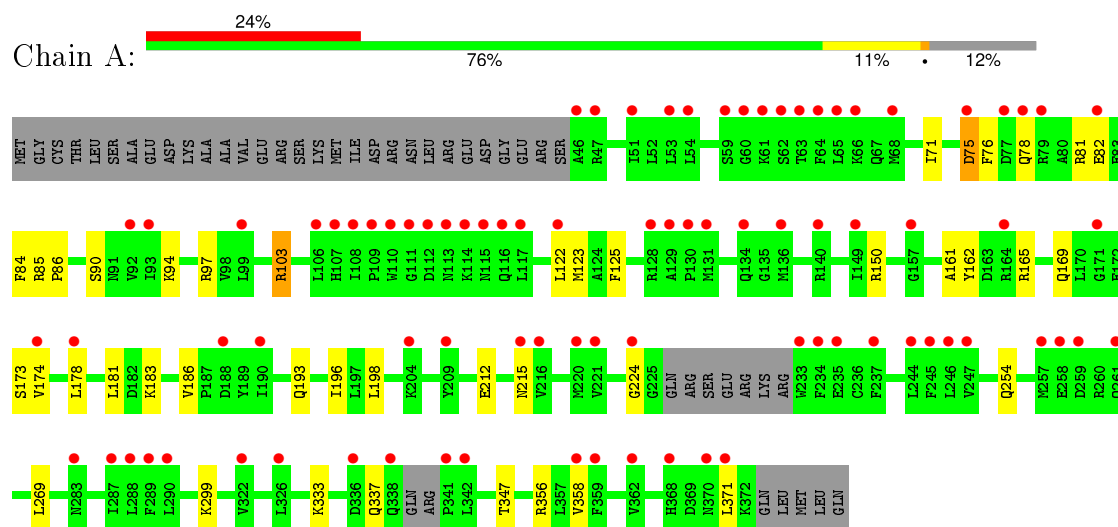
- Molecule 3 is water.

Mol	Chain	Residues	Atoms		ZeroOcc	AltConf
3	A	52	Total	O	0	0
			52	52		

3 Residue-property plots [i](#)

These plots are drawn for all protein, RNA and DNA chains in the entry. The first graphic for a chain summarises the proportions of errors displayed in the second graphic. The second graphic shows the sequence view annotated by issues in geometry and electron density. Residues are color-coded according to the number of geometric quality criteria for which they contain at least one outlier: green = 0, yellow = 1, orange = 2 and red = 3 or more. A red dot above a residue indicates a poor fit to the electron density ($\text{RSRZ} > 2$). Stretches of 2 or more consecutive residues without any outlier are shown as a green connector. Residues present in the sample, but not in the model, are shown in grey.

- Molecule 1: G alpha i/13



4 Data and refinement statistics

Property	Value	Source
Space group	P 43 21 2	Depositor
Cell constants a, b, c, α , β , γ	67.39 Å 67.39 Å 175.16 Å 90.00° 90.00° 90.00°	Depositor
Resolution (Å)	28.50 – 2.00 28.50 – 2.00	Depositor EDS
% Data completeness (in resolution range)	96.7 (28.50-2.00) 96.7 (28.50-2.00)	Depositor EDS
R_{merge}	(Not available)	Depositor
R_{sym}	0.05	Depositor
$\langle I/\sigma(I) \rangle$ ¹	3.21 (at 2.00 Å)	Xtriage
Refinement program	REFMAC 5.2.0005	Depositor
R, R_{free}	0.207 , 0.252 0.206 , 0.249	Depositor DCC
R_{free} test set	1366 reflections (5.28%)	DCC
Wilson B-factor (Å ²)	42.2	Xtriage
Anisotropy	0.261	Xtriage
Bulk solvent k_{sol} (e/Å ³), B_{sol} (Å ²)	0.37 , 77.8	EDS
Estimated twinning fraction	No twinning to report.	Xtriage
L-test for twinning ²	$\langle L \rangle = 0.50$, $\langle L^2 \rangle = 0.33$	Xtriage
Outliers	0 of 27214 reflections	Xtriage
F_o, F_c correlation	0.95	EDS
Total number of atoms	2698	wwPDB-VP
Average B, all atoms (Å ²)	56.0	wwPDB-VP

Xtriage's analysis on translational NCS is as follows: *The largest off-origin peak in the Patterson function is 5.53% of the height of the origin peak. No significant pseudotranslation is detected.*

¹Intensities estimated from amplitudes.

²Theoretical values of $\langle |L| \rangle$, $\langle L^2 \rangle$ for acentric reflections are 0.5, 0.375 respectively for untwinned datasets, and 0.333, 0.2 for perfectly twinned datasets.

5 Model quality ⓘ

5.1 Standard geometry ⓘ

Bond lengths and bond angles in the following residue types are not validated in this section: GDP

The Z score for a bond length (or angle) is the number of standard deviations the observed value is removed from the expected value. A bond length (or angle) with $|Z| > 5$ is considered an outlier worth inspection. RMSZ is the root-mean-square of all Z scores of the bond lengths (or angles).

Mol	Chain	Bond lengths		Bond angles	
		RMSZ	$\# Z > 5$	RMSZ	$\# Z > 5$
1	A	0.77	2/2674 (0.1%)	0.76	2/3602 (0.1%)

All (2) bond length outliers are listed below:

Mol	Chain	Res	Type	Atoms	Z	Observed(Å)	Ideal(Å)
1	A	150	ARG	CZ-NH1	15.89	1.53	1.33
1	A	150	ARG	CZ-NH2	9.04	1.44	1.33

All (2) bond angle outliers are listed below:

Mol	Chain	Res	Type	Atoms	Z	Observed($^{\circ}$)	Ideal($^{\circ}$)
1	A	150	ARG	NE-CZ-NH2	-14.65	112.97	120.30
1	A	150	ARG	NH1-CZ-NH2	5.37	125.30	119.40

There are no chirality outliers.

There are no planarity outliers.

5.2 Too-close contacts ⓘ

In the following table, the Non-H and H(model) columns list the number of non-hydrogen atoms and hydrogen atoms in the chain respectively. The H(added) column lists the number of hydrogen atoms added and optimized by MolProbity. The Clashes column lists the number of clashes within the asymmetric unit, whereas Symm-Clashes lists symmetry related clashes.

Mol	Chain	Non-H	H(model)	H(added)	Clashes	Symm-Clashes
1	A	2618	0	2613	20	0
2	A	28	0	12	0	0
3	A	52	0	0	0	0
All	All	2698	0	2625	20	0

The all-atom clashscore is defined as the number of clashes found per 1000 atoms (including hydrogen atoms). The all-atom clashscore for this structure is 4.

All (20) close contacts within the same asymmetric unit are listed below, sorted by their clash magnitude.

Atom-1	Atom-2	Interatomic distance (Å)	Clash overlap (Å)
1:A:78:GLN:O	1:A:82:GLU:HG2	1.83	0.79
1:A:97:ARG:HA	1:A:123:MET:HE1	1.75	0.69
1:A:97:ARG:HE	1:A:125:PHE:HB3	1.67	0.59
1:A:183:LYS:O	1:A:186:VAL:HG22	2.06	0.55
1:A:84:PHE:CD1	1:A:196:ILE:HG12	2.43	0.53
1:A:75:ASP:OD1	1:A:193:GLN:NE2	2.41	0.53
1:A:82:GLU:HA	1:A:82:GLU:OE1	2.09	0.53
1:A:254:GLN:HE21	1:A:299:LYS:NZ	2.07	0.53
1:A:85:ARG:HB3	1:A:86:PRO:HD3	1.94	0.50
1:A:178:LEU:O	1:A:181:LEU:HG	2.13	0.48
1:A:173:SER:HB3	1:A:198:LEU:O	2.15	0.47
1:A:162:TYR:O	1:A:165:ARG:HB3	2.16	0.46
1:A:90:SER:O	1:A:94:LYS:HG2	2.18	0.44
1:A:71:ILE:HG23	1:A:356:ARG:NH1	2.33	0.43
1:A:174:VAL:HG12	1:A:178:LEU:HD12	1.99	0.43
1:A:103:ARG:HB3	1:A:161:ALA:HB2	2.00	0.43
1:A:76:PHE:HB2	1:A:81:ARG:HD3	2.00	0.42
1:A:97:ARG:NH2	1:A:123:MET:O	2.52	0.42
1:A:269:LEU:HB3	1:A:333:LYS:HE3	2.02	0.41
1:A:347:THR:HG22	1:A:358:VAL:HG21	2.02	0.41

There are no symmetry-related clashes.

5.3 Torsion angles [i](#)

5.3.1 Protein backbone [i](#)

In the following table, the Percentiles column shows the percent Ramachandran outliers of the chain as a percentile score with respect to all X-ray entries followed by that with respect to entries of similar resolution.

The Analysed column shows the number of residues for which the backbone conformation was analysed, and the total number of residues.

Mol	Chain	Analysed	Favoured	Allowed	Outliers	Percentiles	
1	A	313/362 (86%)	300 (96%)	12 (4%)	1 (0%)	46	41

All (1) Ramachandran outliers are listed below:

Mol	Chain	Res	Type
1	A	224	GLY

5.3.2 Protein sidechains ⓘ

In the following table, the Percentiles column shows the percent sidechain outliers of the chain as a percentile score with respect to all X-ray entries followed by that with respect to entries of similar resolution.

The Analysed column shows the number of residues for which the sidechain conformation was analysed, and the total number of residues.

Mol	Chain	Analysed	Rotameric	Outliers	Percentiles	
1	A	290/328 (88%)	282 (97%)	8 (3%)	51	50

All (8) residues with a non-rotameric sidechain are listed below:

Mol	Chain	Res	Type
1	A	75	ASP
1	A	103	ARG
1	A	122	LEU
1	A	169	GLN
1	A	212	GLU
1	A	215	ASN
1	A	337	GLN
1	A	371	LEU

Some sidechains can be flipped to improve hydrogen bonding and reduce clashes. All (3) such sidechains are listed below:

Mol	Chain	Res	Type
1	A	193	GLN
1	A	215	ASN
1	A	254	GLN

5.3.3 RNA ⓘ

There are no RNA molecules in this entry.

5.4 Non-standard residues in protein, DNA, RNA chains ⓘ

There are no non-standard protein/DNA/RNA residues in this entry.

5.5 Carbohydrates ⓘ

There are no carbohydrates in this entry.

5.6 Ligand geometry ⓘ

1 ligand is modelled in this entry.

In the following table, the Counts columns list the number of bonds (or angles) for which Mogul statistics could be retrieved, the number of bonds (or angles) that are observed in the model and the number of bonds (or angles) that are defined in the chemical component dictionary. The Link column lists molecule types, if any, to which the group is linked. The Z score for a bond length (or angle) is the number of standard deviations the observed value is removed from the expected value. A bond length (or angle) with $|Z| > 2$ is considered an outlier worth inspection. RMSZ is the root-mean-square of all Z scores of the bond lengths (or angles).

Mol	Type	Chain	Res	Link	Bond lengths			Bond angles		
					Counts	RMSZ	$\# Z > 2$	Counts	RMSZ	$\# Z > 2$
2	GDP	A	378	-	23,30,30	1.46	3 (13%)	30,47,47	1.92	9 (30%)

In the following table, the Chirals column lists the number of chiral outliers, the number of chiral centers analysed, the number of these observed in the model and the number defined in the chemical component dictionary. Similar counts are reported in the Torsion and Rings columns. '-' means no outliers of that kind were identified.

Mol	Type	Chain	Res	Link	Chirals	Torsions	Rings
2	GDP	A	378	-	-	0/12/32/32	0/3/3/3

All (3) bond length outliers are listed below:

Mol	Chain	Res	Type	Atoms	Z	Observed(Å)	Ideal(Å)
2	A	378	GDP	PB-O2B	-2.89	1.44	1.54
2	A	378	GDP	C5-C4	2.47	1.46	1.40
2	A	378	GDP	O4'-C1'	4.29	1.46	1.41

All (9) bond angle outliers are listed below:

Mol	Chain	Res	Type	Atoms	Z	Observed(°)	Ideal(°)
2	A	378	GDP	PA-O3A-PB	-4.07	119.01	132.67

Continued on next page...

Continued from previous page...

Mol	Chain	Res	Type	Atoms	Z	Observed(°)	Ideal(°)
2	A	378	GDP	C5-C6-N1	-3.87	118.30	123.59
2	A	378	GDP	C6-C5-C4	-3.76	116.40	120.90
2	A	378	GDP	N3-C2-N1	-3.12	122.69	127.44
2	A	378	GDP	C1'-N9-C4	-2.41	123.31	126.94
2	A	378	GDP	C4-C5-N7	-2.07	107.58	109.48
2	A	378	GDP	O2A-PA-O3A	2.20	115.07	105.09
2	A	378	GDP	O2B-PB-O3A	2.55	116.67	105.09
2	A	378	GDP	C6-N1-C2	4.97	122.84	115.94

There are no chirality outliers.

There are no torsion outliers.

There are no ring outliers.

No monomer is involved in short contacts.

5.7 Other polymers [i](#)

There are no such residues in this entry.

5.8 Polymer linkage issues [i](#)

There are no chain breaks in this entry.

6 Fit of model and data ⓘ

6.1 Protein, DNA and RNA chains ⓘ

In the following table, the column labelled ‘#RSRZ> 2’ contains the number (and percentage) of RSRZ outliers, followed by percent RSRZ outliers for the chain as percentile scores relative to all X-ray entries and entries of similar resolution. The OWAB column contains the minimum, median, 95th percentile and maximum values of the occupancy-weighted average B-factor per residue. The column labelled ‘Q< 0.9’ lists the number of (and percentage) of residues with an average occupancy less than 0.9.

Mol	Chain	Analysed	<RSRZ>	#RSRZ>2	OWAB(Å ²)	Q<0.9
1	A	318/362 (87%)	1.51	86 (27%) ⓘ ⓘ	40, 54, 79, 99	0

All (86) RSRZ outliers are listed below:

Mol	Chain	Res	Type	RSRZ
1	A	370	ASN	7.3
1	A	234	PHE	6.3
1	A	114	LYS	6.0
1	A	130	PRO	6.0
1	A	106	LEU	5.6
1	A	108	ILE	5.3
1	A	111	GLY	5.2
1	A	157	GLY	5.2
1	A	129	ALA	5.0
1	A	190	ILE	4.9
1	A	188	ASP	4.9
1	A	246	LEU	4.5
1	A	261	GLN	4.5
1	A	371	LEU	4.4
1	A	128	ARG	4.4
1	A	46	ALA	4.3
1	A	233	TRP	4.3
1	A	64	PHE	4.3
1	A	65	LEU	4.1
1	A	216	VAL	4.1
1	A	244	LEU	4.0
1	A	110	TRP	3.8
1	A	79	ARG	3.8
1	A	53	LEU	3.8
1	A	92	VAL	3.7
1	A	113	ASN	3.7
1	A	247	VAL	3.7

Continued on next page...

Continued from previous page...

Mol	Chain	Res	Type	RSRZ
1	A	288	LEU	3.7
1	A	341	PRO	3.6
1	A	131	MET	3.6
1	A	336	ASP	3.4
1	A	220	MET	3.4
1	A	77	ASP	3.4
1	A	78	GLN	3.4
1	A	112	ASP	3.3
1	A	215	ASN	3.3
1	A	134	GLN	3.2
1	A	287	ILE	3.2
1	A	289	PHE	3.2
1	A	258	GLU	3.2
1	A	221	VAL	3.2
1	A	338	GLN	3.2
1	A	51	ILE	3.2
1	A	93	ILE	3.1
1	A	107	HIS	3.1
1	A	326	LEU	3.1
1	A	283	ASN	3.0
1	A	149	ILE	3.0
1	A	174	VAL	3.0
1	A	290	LEU	3.0
1	A	259	ASP	3.0
1	A	235	GLU	2.9
1	A	54	LEU	2.9
1	A	60	GLY	2.9
1	A	140	ARG	2.9
1	A	47	ARG	2.9
1	A	245	PHE	2.8
1	A	122	LEU	2.8
1	A	63	THR	2.7
1	A	368	HIS	2.7
1	A	342	LEU	2.7
1	A	224	GLY	2.7
1	A	82	GLU	2.7
1	A	237	PHE	2.5
1	A	164	ARG	2.5
1	A	117	LEU	2.5
1	A	171	GLY	2.4
1	A	61	LYS	2.4
1	A	358	VAL	2.4

Continued on next page...

Continued from previous page...

Mol	Chain	Res	Type	RSRZ
1	A	204	LYS	2.3
1	A	59	SER	2.3
1	A	362	VAL	2.3
1	A	136	MET	2.3
1	A	209	TYR	2.3
1	A	75	ASP	2.3
1	A	115	ASN	2.3
1	A	178	LEU	2.2
1	A	62[A]	SER	2.2
1	A	322	VAL	2.2
1	A	68	MET	2.1
1	A	116	GLN	2.1
1	A	99	LEU	2.1
1	A	66	LYS	2.0
1	A	359	PHE	2.0
1	A	109	PRO	2.0
1	A	257	MET	2.0

6.2 Non-standard residues in protein, DNA, RNA chains [i](#)

There are no non-standard protein/DNA/RNA residues in this entry.

6.3 Carbohydrates [i](#)

There are no carbohydrates in this entry.

6.4 Ligands [i](#)

In the following table, the Atoms column lists the number of modelled atoms in the group and the number defined in the chemical component dictionary. LLDF column lists the quality of electron density of the group with respect to its neighbouring residues in protein, DNA or RNA chains. The B-factors column lists the minimum, median, 95th percentile and maximum values of B factors of atoms in the group. The column labelled 'Q< 0.9' lists the number of atoms with occupancy less than 0.9.

Mol	Type	Chain	Res	Atoms	RSCC	RSR	LLDF	B-factors(Å ²)	Q<0.9
2	GDP	A	378	28/28	0.97	0.08	-2.60	29,35,37,37	0

6.5 Other polymers [i](#)

There are no such residues in this entry.