



Full wwPDB X-ray Structure Validation Report ⓘ

Feb 19, 2016 – 09:04 PM GMT

PDB ID : 4ZLI
Title : Cellobionic acid phosphorylase - 3-O-beta-D-glucopyranosyl-alpha-D-glucopyranuronic acid complex
Authors : Nam, Y.W.; Arakawa, T.; Fushinobu, S.
Deposited on : 2015-05-01
Resolution : 1.80 Å(reported)

This is a Full wwPDB X-ray Structure Validation Report for a publicly released PDB entry.
We welcome your comments at validation@mail.wwpdb.org
A user guide is available at
<http://wwpdb.org/validation/2016/XrayValidationReportHelp>
with specific help available everywhere you see the ⓘ symbol.

The following versions of software and data (see [references ⓘ](#)) were used in the production of this report:

MolProbity : 4.02b-467
Mogul : 1.7.1 (RC1), CSD as537be (2016)
Xtriage (Phenix) : 1.9-1692
EDS : rb-20026982
Percentile statistics : 20151230.v01 (using entries in the PDB archive December 30th 2015)
Refmac : 5.8.0135
CCP4 : 6.5.0
Ideal geometry (proteins) : Engh & Huber (2001)
Ideal geometry (DNA, RNA) : Parkinson et al. (1996)
Validation Pipeline (wwPDB-VP) : rb-20026982

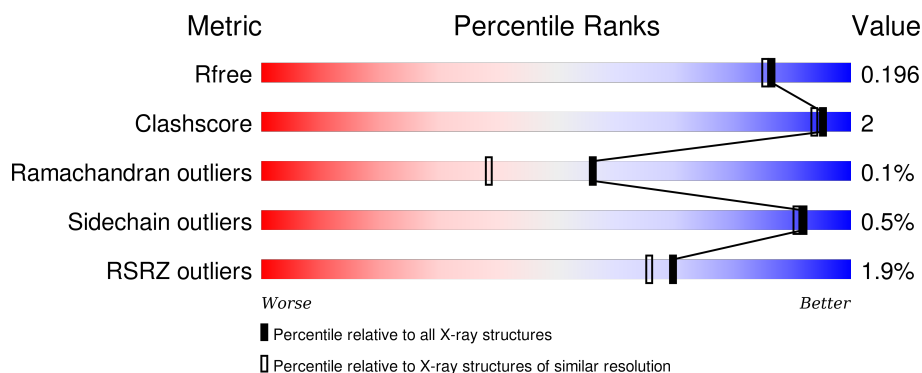
1 Overall quality at a glance

The following experimental techniques were used to determine the structure:

X-RAY DIFFRACTION


The reported resolution of this entry is 1.80 Å.

Percentile scores (ranging between 0-100) for global validation metrics of the entry are shown in the following graphic. The table shows the number of entries on which the scores are based.



Metric	Whole archive (#Entries)	Similar resolution (#Entries, resolution range(Å))
R_{free}	91344	4533 (1.80-1.80)
Clashscore	102246	5383 (1.80-1.80)
Ramachandran outliers	100387	5320 (1.80-1.80)
Sidechain outliers	100360	5319 (1.80-1.80)
RSRZ outliers	91569	4547 (1.80-1.80)

The table below summarises the geometric issues observed across the polymeric chains and their fit to the electron density. The red, orange, yellow and green segments on the lower bar indicate the fraction of residues that contain outliers for ≥ 3 , 2, 1 and 0 types of geometric quality criteria. A grey segment represents the fraction of residues that are not modelled. The numeric value for each fraction is indicated below the corresponding segment, with a dot representing fractions $\leq 5\%$. The upper red bar (where present) indicates the fraction of residues that have poor fit to the electron density. The numeric value is given above the bar.

Mol	Chain	Length	Quality of chain
1	A	796	

2 Entry composition [i](#)

There are 6 unique types of molecules in this entry. The entry contains 6932 atoms, of which 0 are hydrogens and 0 are deuteriums.

In the tables below, the ZeroOcc column contains the number of atoms modelled with zero occupancy, the AltConf column contains the number of residues with at least one atom in alternate conformation and the Trace column contains the number of residues modelled with at most 2 atoms.

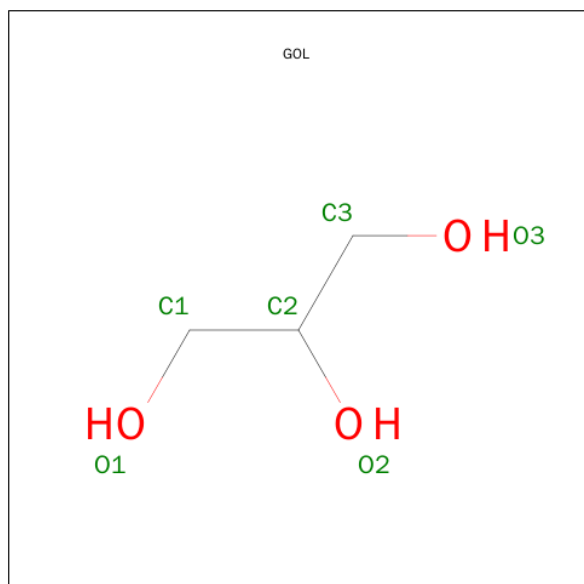
- Molecule 1 is a protein called Putative b-glycan phosphorylase.

Mol	Chain	Residues	Atoms					ZeroOcc	AltConf	Trace
			Total	C	N	O	S			
1	A	785	6228	3965	1060	1171	32	0	0	0

There are 9 discrepancies between the modelled and reference sequences:

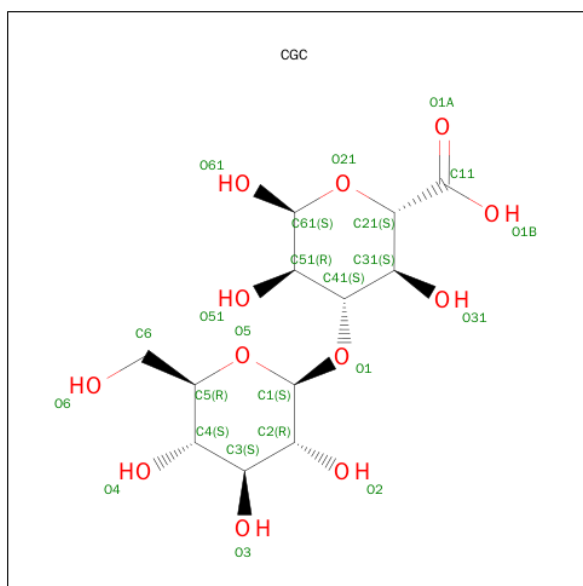
Chain	Residue	Modelled	Actual	Comment	Reference
A	1	GLY	MET	engineered mutation	UNP Q21MB1
A	789	LEU	-	expression tag	UNP Q21MB1
A	790	GLU	-	expression tag	UNP Q21MB1
A	791	HIS	-	expression tag	UNP Q21MB1
A	792	HIS	-	expression tag	UNP Q21MB1
A	793	HIS	-	expression tag	UNP Q21MB1
A	794	HIS	-	expression tag	UNP Q21MB1
A	795	HIS	-	expression tag	UNP Q21MB1
A	796	HIS	-	expression tag	UNP Q21MB1

- Molecule 2 is GLYCEROL (three-letter code: GOL) (formula: C₃H₈O₃).



Mol	Chain	Residues	Atoms			ZeroOcc	AltConf
2	A	1	Total	C	O	0	0
			6	3	3		
2	A	1	Total	C	O	0	0
			6	3	3		
2	A	1	Total	C	O	0	0
			6	3	3		
2	A	1	Total	C	O	0	0
			6	3	3		
2	A	1	Total	C	O	0	0
			6	3	3		

- Molecule 3 is 3-O-beta-D-glucopyranosyl-alpha-D-glucopyranuronic acid (three-letter code: CGC) (formula: C₁₂H₂₀O₁₂).



Mol	Chain	Residues	Atoms			ZeroOcc	AltConf
3	A	1	Total	C	O	0	0
			24	12	12		

- Molecule 4 is SULFATE ION (three-letter code: SO4) (formula: O₄S).



Mol	Chain	Residues	Atoms			ZeroOcc	AltConf
4	A	1	Total	O	S	0	0
			5	4	1		
4	A	1	Total	O	S	0	0
			5	4	1		
4	A	1	Total	O	S	0	0
			5	4	1		
4	A	1	Total	O	S	0	0
			5	4	1		

- Molecule 5 is CHLORIDE ION (three-letter code: CL) (formula: Cl).

Mol	Chain	Residues	Atoms		ZeroOcc	AltConf
5	A	1	Total	Cl	0	0
			1	1		

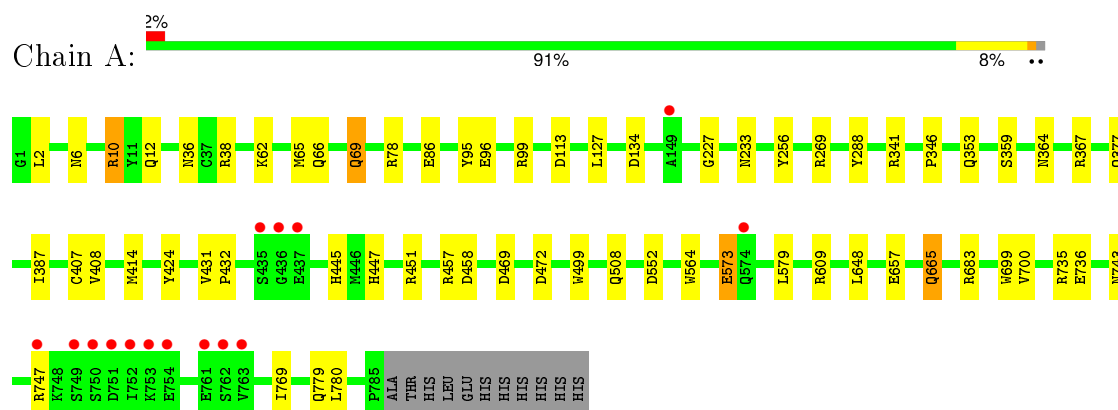
- Molecule 6 is water.

Mol	Chain	Residues	Atoms		ZeroOcc	AltConf
6	A	629	Total	O	0	0
			629	629		

3 Residue-property plots

These plots are drawn for all protein, RNA and DNA chains in the entry. The first graphic for a chain summarises the proportions of errors displayed in the second graphic. The second graphic shows the sequence view annotated by issues in geometry and electron density. Residues are color-coded according to the number of geometric quality criteria for which they contain at least one outlier: green = 0, yellow = 1, orange = 2 and red = 3 or more. A red dot above a residue indicates a poor fit to the electron density ($RSRZ > 2$). Stretches of 2 or more consecutive residues without any outlier are shown as a green connector. Residues present in the sample, but not in the model, are shown in grey.

- Molecule 1: Putative b-glycan phosphorylase



4 Data and refinement statistics

Property	Value	Source
Space group	P 31 2 1	Depositor
Cell constants a, b, c, α , β , γ	107.06Å 107.06Å 185.77Å 90.00° 90.00° 120.00°	Depositor
Resolution (Å)	40.50 – 1.80 40.50 – 1.80	Depositor EDS
% Data completeness (in resolution range)	99.4 (40.50-1.80) 99.5 (40.50-1.80)	Depositor EDS
R_{merge}	(Not available)	Depositor
R_{sym}	0.09	Depositor
$\langle I/\sigma(I) \rangle$ ¹	2.75 (at 1.79Å)	Xtriage
Refinement program	REFMAC 5.8.0107	Depositor
R, R_{free}	0.155 , 0.188 0.167 , 0.196	Depositor DCC
R_{free} test set	5709 reflections (5.28%)	DCC
Wilson B-factor (Å ²)	23.5	Xtriage
Anisotropy	0.014	Xtriage
Bulk solvent k_{sol} (e/Å ³), B_{sol} (Å ²)	0.40 , 48.0	EDS
Estimated twinning fraction	0.013 for -h,-k,l	Xtriage
L-test for twinning ²	$\langle L \rangle = 0.51$, $\langle L^2 \rangle = 0.35$	Xtriage
Outliers	0 of 113918 reflections	Xtriage
F_o, F_c correlation	0.97	EDS
Total number of atoms	6932	wwPDB-VP
Average B, all atoms (Å ²)	28.0	wwPDB-VP

Xtriage's analysis on translational NCS is as follows: *The largest off-origin peak in the Patterson function is 3.47% of the height of the origin peak. No significant pseudotranslation is detected.*

¹ Intensities estimated from amplitudes.

² Theoretical values of $\langle |L| \rangle$, $\langle L^2 \rangle$ for acentric reflections are 0.5, 0.375 respectively for untwinned datasets, and 0.333, 0.2 for perfectly twinned datasets.

5 Model quality [i](#)

5.1 Standard geometry [i](#)

Bond lengths and bond angles in the following residue types are not validated in this section: GOL, CGC, SO4, CL

The Z score for a bond length (or angle) is the number of standard deviations the observed value is removed from the expected value. A bond length (or angle) with $|Z| > 5$ is considered an outlier worth inspection. RMSZ is the root-mean-square of all Z scores of the bond lengths (or angles).

Mol	Chain	Bond lengths		Bond angles	
		RMSZ	$\# Z > 5$	RMSZ	$\# Z > 5$
1	A	1.35	12/6393 (0.2%)	1.18	28/8683 (0.3%)

All (12) bond length outliers are listed below:

Mol	Chain	Res	Type	Atoms	Z	Observed(Å)	Ideal(Å)
1	A	256	TYR	CE1-CZ	7.57	1.48	1.38
1	A	407	CYS	CB-SG	-7.41	1.69	1.82
1	A	86	GLU	CD-OE1	6.16	1.32	1.25
1	A	414	MET	CG-SD	-6.15	1.65	1.81
1	A	564	TRP	CB-CG	5.85	1.60	1.50
1	A	69	GLN	C-O	-5.54	1.12	1.23
1	A	573	GLU	CG-CD	5.53	1.60	1.51
1	A	508	GLN	CD-NE2	5.52	1.46	1.32
1	A	288	TYR	CE1-CZ	-5.35	1.31	1.38
1	A	364	ASN	CG-OD1	5.28	1.35	1.24
1	A	359	SER	CA-CB	5.19	1.60	1.52
1	A	736	GLU	CG-CD	-5.12	1.44	1.51

All (28) bond angle outliers are listed below:

Mol	Chain	Res	Type	Atoms	Z	Observed(°)	Ideal(°)
1	A	469	ASP	CB-CG-OD1	9.58	126.92	118.30
1	A	367	ARG	NE-CZ-NH1	9.17	124.88	120.30
1	A	735	ARG	NE-CZ-NH1	9.01	124.81	120.30
1	A	458	ASP	CB-CG-OD1	7.27	124.84	118.30
1	A	65	MET	CG-SD-CE	6.99	111.39	100.20
1	A	134	ASP	CB-CG-OD2	-6.81	112.17	118.30
1	A	457	ARG	NE-CZ-NH2	-6.65	116.98	120.30
1	A	736	GLU	OE1-CD-OE2	6.58	131.19	123.30
1	A	341	ARG	NE-CZ-NH2	-6.40	117.10	120.30

Continued on next page...

Continued from previous page...

Mol	Chain	Res	Type	Atoms	Z	Observed(°)	Ideal(°)
1	A	269	ARG	NE-CZ-NH2	-6.28	117.16	120.30
1	A	127	LEU	CA-CB-CG	6.22	129.60	115.30
1	A	472	ASP	CB-CG-OD2	-6.12	112.79	118.30
1	A	609	ARG	NE-CZ-NH1	6.11	123.36	120.30
1	A	552	ASP	CB-CG-OD1	6.05	123.74	118.30
1	A	424	TYR	CB-CG-CD2	5.89	124.53	121.00
1	A	683	ARG	NE-CZ-NH1	5.77	123.19	120.30
1	A	113	ASP	CB-CG-OD1	5.69	123.42	118.30
1	A	609	ARG	NE-CZ-NH2	-5.67	117.47	120.30
1	A	78	ARG	NE-CZ-NH2	-5.63	117.49	120.30
1	A	99	ARG	NE-CZ-NH1	5.58	123.09	120.30
1	A	451	ARG	NE-CZ-NH2	-5.55	117.53	120.30
1	A	747	ARG	NE-CZ-NH2	5.49	123.05	120.30
1	A	579	LEU	CB-CG-CD1	5.38	120.15	111.00
1	A	269	ARG	NE-CZ-NH1	5.35	122.98	120.30
1	A	10	ARG	NE-CZ-NH2	-5.33	117.64	120.30
1	A	367	ARG	NE-CZ-NH2	-5.32	117.64	120.30
1	A	573	GLU	OE1-CD-OE2	-5.30	116.94	123.30
1	A	665	GLN	CA-CB-CG	5.29	125.04	113.40

There are no chirality outliers.

There are no planarity outliers.

5.2 Too-close contacts ⓘ

In the following table, the Non-H and H(model) columns list the number of non-hydrogen atoms and hydrogen atoms in the chain respectively. The H(added) column lists the number of hydrogen atoms added and optimized by MolProbity. The Clashes column lists the number of clashes within the asymmetric unit, whereas Symm-Clashes lists symmetry related clashes.

Mol	Chain	Non-H	H(model)	H(added)	Clashes	Symm-Clashes
1	A	6228	0	6003	20	0
2	A	30	0	40	1	0
3	A	24	0	19	0	0
4	A	20	0	0	0	0
5	A	1	0	0	0	0
6	A	629	0	0	0	0
All	All	6932	0	6062	20	0

The all-atom clashscore is defined as the number of clashes found per 1000 atoms (including hydrogen atoms). The all-atom clashscore for this structure is 2.

All (20) close contacts within the same asymmetric unit are listed below, sorted by their clash magnitude.

Atom-1	Atom-2	Interatomic distance (Å)	Clash overlap (Å)
1:A:353:GLN:HE21	1:A:699:TRP:HE1	1.31	0.79
1:A:447:HIS:HD2	1:A:499:TRP:HE1	1.41	0.68
1:A:743:ASN:HD22	1:A:779:GLN:HE22	1.48	0.62
1:A:377:GLN:OE1	1:A:445:HIS:HD2	1.86	0.57
1:A:657:GLU:OE1	2:A:804:GOL:O1	2.18	0.57
1:A:447:HIS:CD2	1:A:499:TRP:HE1	2.23	0.57
1:A:431:VAL:O	1:A:445:HIS:HE1	1.92	0.52
1:A:6:ASN:HD22	1:A:10:ARG:HH11	1.58	0.51
1:A:377:GLN:OE1	1:A:445:HIS:CD2	2.63	0.50
1:A:431:VAL:HB	1:A:432:PRO:HD2	1.93	0.50
1:A:573:GLU:CD	1:A:573:GLU:H	2.19	0.46
1:A:6:ASN:ND2	1:A:10:ARG:HH11	2.16	0.44
1:A:66:GLN:H	1:A:69:GLN:NE2	2.16	0.44
1:A:36:ASN:ND2	1:A:38:ARG:H	2.17	0.43
1:A:227:GLY:H	1:A:233:ASN:HD22	1.66	0.43
1:A:769:ILE:HD11	1:A:780:LEU:HD21	2.01	0.42
1:A:38:ARG:HB3	1:A:96:GLU:HG2	2.02	0.41
1:A:346:PRO:HD2	1:A:387:ILE:O	2.20	0.41
1:A:2:LEU:HA	1:A:12:GLN:O	2.21	0.40
1:A:648:LEU:HD11	1:A:700:VAL:HG13	2.03	0.40

There are no symmetry-related clashes.

5.3 Torsion angles [i](#)

5.3.1 Protein backbone [i](#)

In the following table, the Percentiles column shows the percent Ramachandran outliers of the chain as a percentile score with respect to all X-ray entries followed by that with respect to entries of similar resolution.

The Analysed column shows the number of residues for which the backbone conformation was analysed, and the total number of residues.

Mol	Chain	Analysed	Favoured	Allowed	Outliers	Percentiles	
1	A	783/796 (98%)	763 (97%)	19 (2%)	1 (0%)	56	38

All (1) Ramachandran outliers are listed below:

Mol	Chain	Res	Type
1	A	95	TYR

5.3.2 Protein sidechains [i](#)

In the following table, the Percentiles column shows the percent sidechain outliers of the chain as a percentile score with respect to all X-ray entries followed by that with respect to entries of similar resolution.

The Analysed column shows the number of residues for which the sidechain conformation was analysed, and the total number of residues.

Mol	Chain	Analysed	Rotameric	Outliers	Percentiles	
1	A	655/665 (98%)	652 (100%)	3 (0%)	92	91

All (3) residues with a non-rotameric sidechain are listed below:

Mol	Chain	Res	Type
1	A	62	LYS
1	A	408	VAL
1	A	665	GLN

Some sidechains can be flipped to improve hydrogen bonding and reduce clashes. All (12) such sidechains are listed below:

Mol	Chain	Res	Type
1	A	6	ASN
1	A	12	GLN
1	A	36	ASN
1	A	233	ASN
1	A	313	GLN
1	A	353	GLN
1	A	445	HIS
1	A	447	HIS
1	A	560	ASN
1	A	586	GLN
1	A	625	ASN
1	A	779	GLN

5.3.3 RNA [i](#)

There are no RNA molecules in this entry.

5.4 Non-standard residues in protein, DNA, RNA chains ⓘ

There are no non-standard protein/DNA/RNA residues in this entry.

5.5 Carbohydrates ⓘ

There are no carbohydrates in this entry.

5.6 Ligand geometry ⓘ

Of 11 ligands modelled in this entry, 1 is monoatomic - leaving 10 for Mogul analysis.

In the following table, the Counts columns list the number of bonds (or angles) for which Mogul statistics could be retrieved, the number of bonds (or angles) that are observed in the model and the number of bonds (or angles) that are defined in the chemical component dictionary. The Link column lists molecule types, if any, to which the group is linked. The Z score for a bond length (or angle) is the number of standard deviations the observed value is removed from the expected value. A bond length (or angle) with $|Z| > 2$ is considered an outlier worth inspection. RMSZ is the root-mean-square of all Z scores of the bond lengths (or angles).

Mol	Type	Chain	Res	Link	Bond lengths			Bond angles		
					Counts	RMSZ	$\# Z > 2$	Counts	RMSZ	$\# Z > 2$
2	GOL	A	801	-	5,5,5	1.03	0	5,5,5	0.67	0
2	GOL	A	802	-	5,5,5	0.39	0	5,5,5	0.48	0
2	GOL	A	803	-	5,5,5	1.48	1 (20%)	5,5,5	1.82	1 (20%)
2	GOL	A	804	-	5,5,5	0.89	0	5,5,5	0.51	0
2	GOL	A	805	-	5,5,5	0.76	0	5,5,5	0.69	0
3	CGC	A	806	-	22,25,25	1.39	5 (22%)	32,37,37	1.69	6 (18%)
4	SO4	A	807	-	4,4,4	1.15	0	6,6,6	0.62	0
4	SO4	A	808	-	4,4,4	0.92	0	6,6,6	0.66	0
4	SO4	A	809	-	4,4,4	0.88	0	6,6,6	0.46	0
4	SO4	A	810	-	4,4,4	1.24	0	6,6,6	0.82	0

In the following table, the Chirals column lists the number of chiral outliers, the number of chiral centers analysed, the number of these observed in the model and the number defined in the chemical component dictionary. Similar counts are reported in the Torsion and Rings columns. '-' means no outliers of that kind were identified.

Mol	Type	Chain	Res	Link	Chirals	Torsions	Rings
2	GOL	A	801	-	-	0/4/4/4	0/0/0/0
2	GOL	A	802	-	-	0/4/4/4	0/0/0/0
2	GOL	A	803	-	-	0/4/4/4	0/0/0/0
2	GOL	A	804	-	-	0/4/4/4	0/0/0/0

Continued on next page...

Continued from previous page...

Mol	Type	Chain	Res	Link	Chirals	Torsions	Rings
2	GOL	A	805	-	-	0/4/4/4	0/0/0/0
3	CGC	A	806	-	-	0/6/50/50	0/2/2/2
4	SO4	A	807	-	-	0/0/0/0	0/0/0/0
4	SO4	A	808	-	-	0/0/0/0	0/0/0/0
4	SO4	A	809	-	-	0/0/0/0	0/0/0/0
4	SO4	A	810	-	-	0/0/0/0	0/0/0/0

All (6) bond length outliers are listed below:

Mol	Chain	Res	Type	Atoms	Z	Observed(Å)	Ideal(Å)
3	A	806	CGC	O21-C61	2.25	1.47	1.43
3	A	806	CGC	O1-C1	2.26	1.47	1.41
3	A	806	CGC	C51-C41	2.27	1.58	1.52
3	A	806	CGC	C61-C51	2.29	1.57	1.52
2	A	803	GOL	O2-C2	2.52	1.50	1.43
3	A	806	CGC	C2-C3	2.68	1.59	1.52

All (7) bond angle outliers are listed below:

Mol	Chain	Res	Type	Atoms	Z	Observed(°)	Ideal(°)
3	A	806	CGC	C31-C41-C51	-4.28	106.05	110.93
3	A	806	CGC	O61-C61-C51	-2.67	101.67	109.05
3	A	806	CGC	O2-C2-C1	-2.58	104.29	110.01
3	A	806	CGC	O1-C41-C51	2.41	113.47	107.18
3	A	806	CGC	C61-O21-C21	2.63	116.09	112.22
2	A	803	GOL	O3-C3-C2	2.76	123.95	109.97
3	A	806	CGC	C61-C51-C41	4.52	118.06	110.70

There are no chirality outliers.

There are no torsion outliers.

There are no ring outliers.

1 monomer is involved in 1 short contact:

Mol	Chain	Res	Type	Clashes	Symm-Clashes
2	A	804	GOL	1	0

5.7 Other polymers ⓘ

There are no such residues in this entry.

5.8 Polymer linkage issues ⓘ

There are no chain breaks in this entry.

6 Fit of model and data [i](#)

6.1 Protein, DNA and RNA chains [i](#)

In the following table, the column labelled ‘#RSRZ> 2’ contains the number (and percentage) of RSRZ outliers, followed by percent RSRZ outliers for the chain as percentile scores relative to all X-ray entries and entries of similar resolution. The OWAB column contains the minimum, median, 95th percentile and maximum values of the occupancy-weighted average B-factor per residue. The column labelled ‘Q< 0.9’ lists the number of (and percentage) of residues with an average occupancy less than 0.9.

Mol	Chain	Analysed	<RSRZ>	#RSRZ>2	OWAB(Å ²)	Q<0.9
1	A	785/796 (98%)	-0.35	15 (1%) 70 66	18, 26, 42, 75	0

All (15) RSRZ outliers are listed below:

Mol	Chain	Res	Type	RSRZ
1	A	750	SER	6.1
1	A	751	ASP	5.4
1	A	753	LYS	5.4
1	A	752	ILE	4.9
1	A	749	SER	4.1
1	A	754	GLU	4.1
1	A	436	GLY	3.3
1	A	574	GLN	2.8
1	A	437	GLU	2.7
1	A	747	ARG	2.4
1	A	149	ALA	2.2
1	A	762	SER	2.2
1	A	763	VAL	2.1
1	A	761	GLU	2.1
1	A	435	SER	2.0

6.2 Non-standard residues in protein, DNA, RNA chains [i](#)

There are no non-standard protein/DNA/RNA residues in this entry.

6.3 Carbohydrates [i](#)

There are no carbohydrates in this entry.

6.4 Ligands

In the following table, the Atoms column lists the number of modelled atoms in the group and the number defined in the chemical component dictionary. LLDF column lists the quality of electron density of the group with respect to its neighbouring residues in protein, DNA or RNA chains. The B-factors column lists the minimum, median, 95th percentile and maximum values of B factors of atoms in the group. The column labelled 'Q< 0.9' lists the number of atoms with occupancy less than 0.9.

Mol	Type	Chain	Res	Atoms	RSCC	RSR	LLDF	B-factors(Å ²)	Q<0.9
2	GOL	A	805	6/6	0.97	0.10	1.58	29,31,33,35	0
2	GOL	A	803	6/6	0.93	0.09	0.89	37,44,45,47	0
5	CL	A	811	1/1	0.99	0.13	0.67	23,23,23,23	0
2	GOL	A	804	6/6	0.95	0.10	0.30	32,38,41,50	0
4	SO4	A	807	5/5	1.00	0.11	-0.23	21,23,25,26	0
2	GOL	A	802	6/6	0.97	0.06	-0.89	24,27,29,30	0
3	CGC	A	806	24/24	0.95	0.08	-0.96	20,26,30,33	0
2	GOL	A	801	6/6	0.98	0.04	-1.53	19,20,22,23	0
4	SO4	A	808	5/5	0.99	0.06	-1.84	30,34,40,42	0
4	SO4	A	809	5/5	0.99	0.13	-	38,39,41,42	0
4	SO4	A	810	5/5	0.90	0.27	-	54,56,73,78	0

6.5 Other polymers

There are no such residues in this entry.