



wwPDB X-ray Structure Validation Summary Report ⓘ

Feb 1, 2016 – 12:05 AM GMT

PDB ID : 1ZM9
Title : Structure of eEF2-ETA in complex with PJ34
Authors : Joergensen, R.; Merrill, A.R.; Yates, S.P.; Marquez, V.E.; Schwan, A.L.; Boesen, T.; Andersen, G.R.
Deposited on : 2005-05-10
Resolution : 2.80 Å(reported)

This is a wwPDB X-ray Structure Validation Summary Report for a publicly released PDB entry.
We welcome your comments at validation@mail.wwpdb.org
A user guide is available at
<http://wwpdb.org/validation/2016/XrayValidationReportHelp>
with specific help available everywhere you see the ⓘ symbol.

The following versions of software and data (see [references ⓘ](#)) were used in the production of this report:

MolProbity : 4.02b-467
Mogul : 1.7 (RC4), CSD as536be (2015)
Xtriage (Phenix) : 1.9-1692
EDS : rb-20026688
Percentile statistics : 20151230.v01 (using entries in the PDB archive December 30th 2015)
Refmac : 5.8.0135
CCP4 : 6.5.0
Ideal geometry (proteins) : Engh & Huber (2001)
Ideal geometry (DNA, RNA) : Parkinson et al. (1996)
Validation Pipeline (wwPDB-VP) : trunk26865

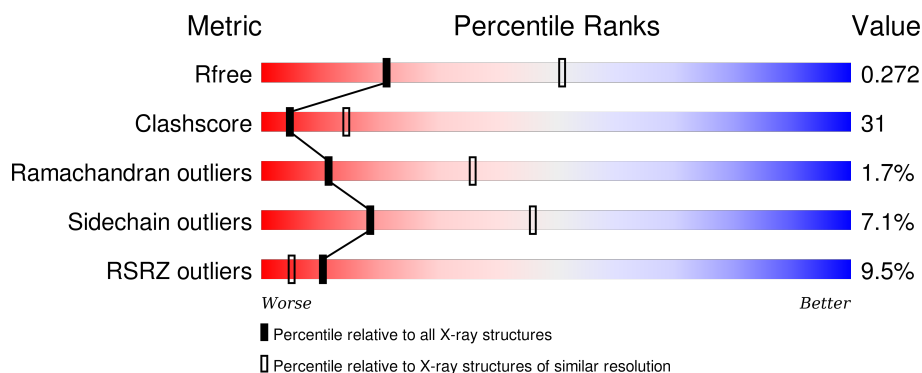
1 Overall quality at a glance

The following experimental techniques were used to determine the structure:

X-RAY DIFFRACTION

The reported resolution of this entry is 2.80 Å.

Percentile scores (ranging between 0-100) for global validation metrics of the entry are shown in the following graphic. The table shows the number of entries on which the scores are based.




Metric	Whole archive (#Entries)	Similar resolution (#Entries, resolution range(Å))
R_{free}	91344	2393 (2.80-2.80)
Clashscore	102246	2827 (2.80-2.80)
Ramachandran outliers	100387	2782 (2.80-2.80)
Sidechain outliers	100360	2784 (2.80-2.80)
RSRZ outliers	91569	2404 (2.80-2.80)

The table below summarises the geometric issues observed across the polymeric chains and their fit to the electron density. The red, orange, yellow and green segments on the lower bar indicate the fraction of residues that contain outliers for ≥ 3 , 2, 1 and 0 types of geometric quality criteria. A grey segment represents the fraction of residues that are not modelled. The numeric value for each fraction is indicated below the corresponding segment, with a dot representing fractions $\leq 5\%$. The upper red bar (where present) indicates the fraction of residues that have poor fit to the electron density. The numeric value is given above the bar.

Mol	Chain	Length	Quality of chain
1	A	842	<div> <div></div> <div>54% 40% . .</div> </div>
1	C	842	<div> <div>6%</div> <div>43% 49% 5%</div> </div>
1	E	842	<div> <div>27%</div> <div>48% 46% . .</div> </div>
2	B	207	<div> <div></div> <div>56% 38% 6%</div> </div>
2	D	207	<div> <div></div> <div>59% 35% 5%</div> </div>

Continued on next page...

Continued from previous page...

Mol	Chain	Length	Quality of chain
2	F	207	 A horizontal bar chart showing the quality of chain F. The bar is divided into three segments: green (60%), yellow (34%), and orange (6%). The percentages are labeled below the segments. <div><div></div><div>60%</div><div>34%</div><div>6%</div></div>

2 Entry composition

There are 3 unique types of molecules in this entry. The entry contains 24042 atoms, of which 0 are hydrogens and 0 are deuteriums.

In the tables below, the ZeroOcc column contains the number of atoms modelled with zero occupancy, the AltConf column contains the number of residues with at least one atom in alternate conformation and the Trace column contains the number of residues modelled with at most 2 atoms.

- Molecule 1 is a protein called Elongation factor 2.

Mol	Chain	Residues	Atoms					ZeroOcc	AltConf	Trace
1	A	823	Total	C	N	O	S	0	0	0
			6405	4075	1093	1207	30			
1	C	823	Total	C	N	O	S	0	0	0
			6405	4075	1093	1207	30			
1	E	823	Total	C	N	O	S	0	0	0
			6405	4075	1093	1207	30			

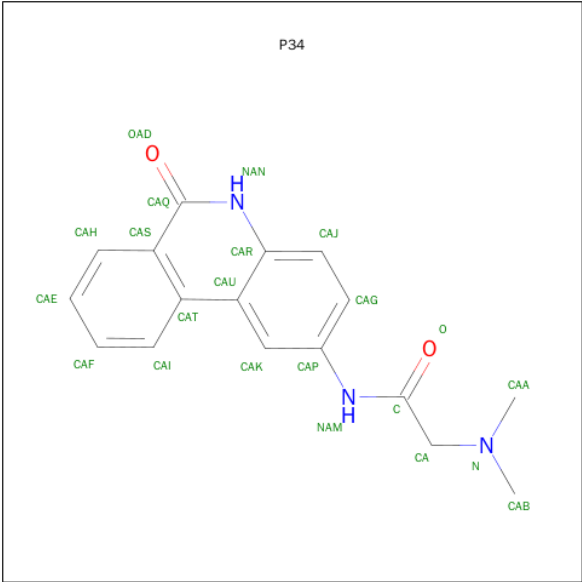
There are 3 discrepancies between the modelled and reference sequences:

Chain	Residue	Modelled	Actual	Comment	Reference
A	699	DDE	HIS	MODIFIED RESIDUE	UNP P32324
C	699	DDE	HIS	MODIFIED RESIDUE	UNP P32324
E	699	DDE	HIS	MODIFIED RESIDUE	UNP P32324

- Molecule 2 is a protein called exotoxin A.

Mol	Chain	Residues	Atoms				ZeroOcc	AltConf	Trace
2	B	207	Total	C	N	O	0	0	0
			1587	1001	283	303			
2	D	207	Total	C	N	O	0	0	0
			1587	1001	283	303			
2	F	207	Total	C	N	O	0	0	0
			1587	1001	283	303			

- Molecule 3 is N 2 ,N 2 -DIMETHYL-N 1 -(6-OXO-5,6-DIHYDROPHENANTHRIDIN-2-Y L)GLYCINAMIDE (three-letter code: P34) (formula: C₁₇H₁₇N₃O₂).

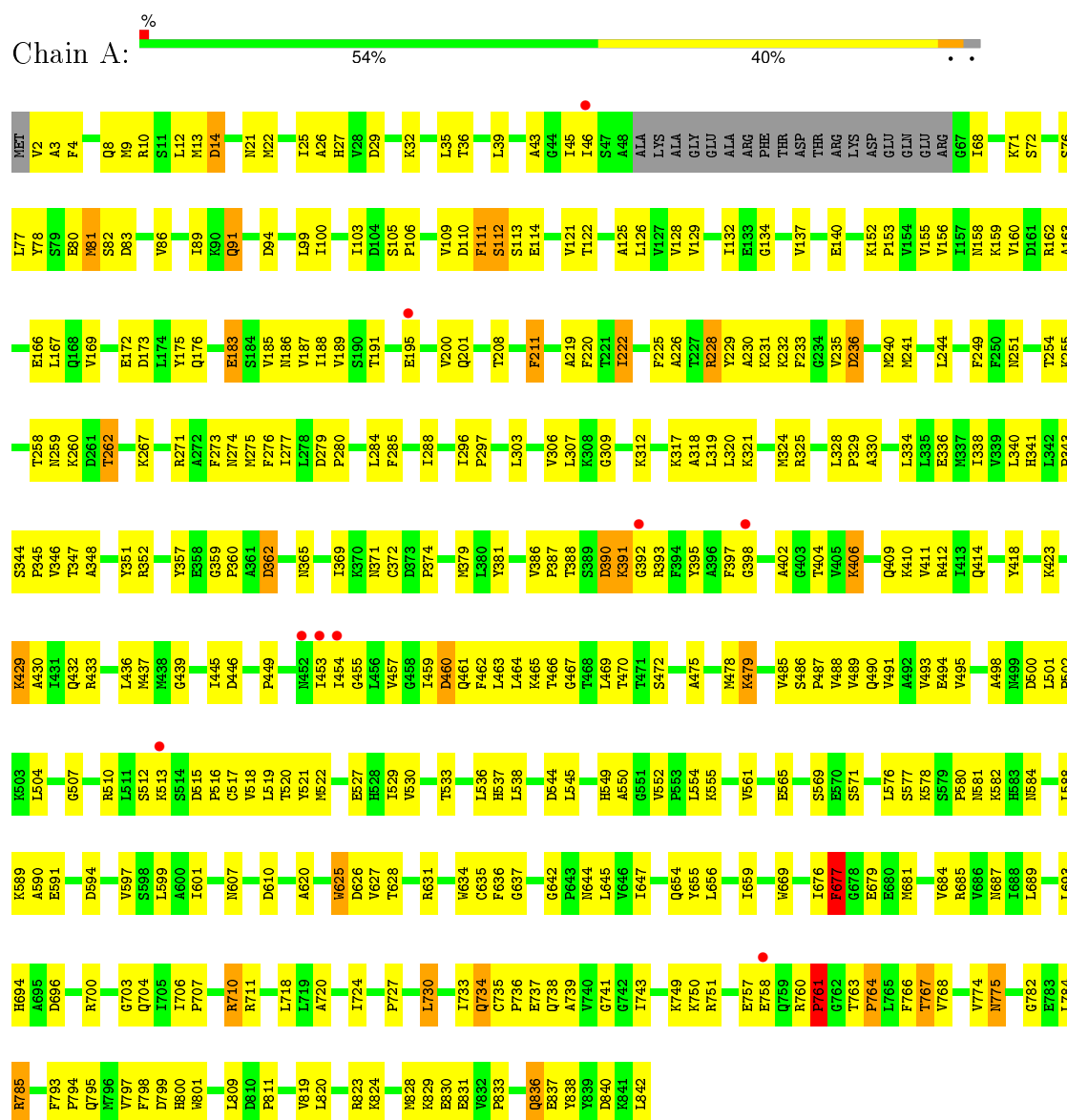


Mol	Chain	Residues	Atoms				ZeroOcc	AltConf
3	B	1	Total	C	N	O	0	0
			22	17	3	2		
3	D	1	Total	C	N	O	0	0
			22	17	3	2		
3	F	1	Total	C	N	O	0	0
			22	17	3	2		

3 Residue-property plots

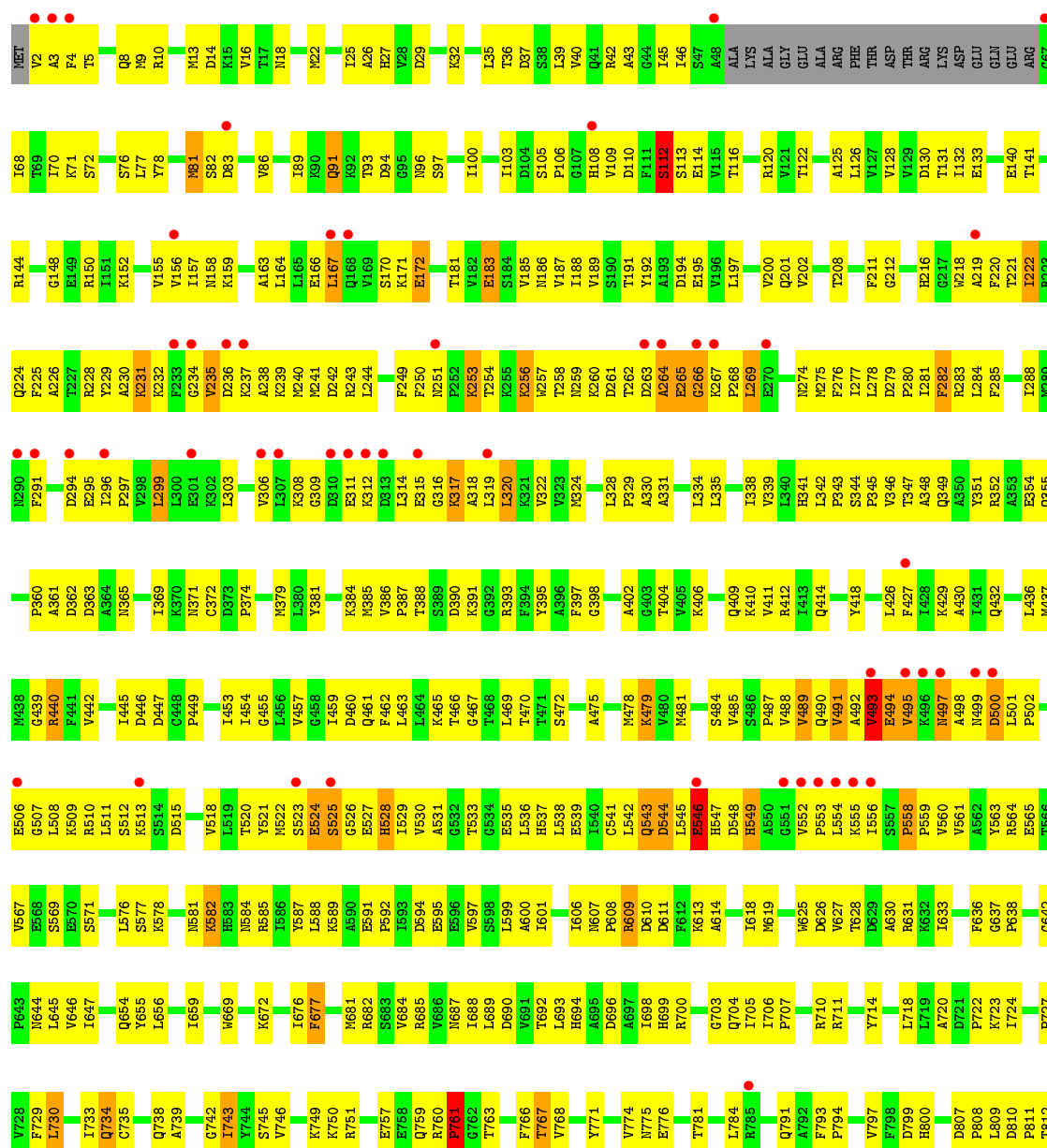
These plots are drawn for all protein, RNA and DNA chains in the entry. The first graphic for a chain summarises the proportions of errors displayed in the second graphic. The second graphic shows the sequence view annotated by issues in geometry and electron density. Residues are color-coded according to the number of geometric quality criteria for which they contain at least one outlier: green = 0, yellow = 1, orange = 2 and red = 3 or more. A red dot above a residue indicates a poor fit to the electron density ($RSRZ > 2$). Stretches of 2 or more consecutive residues without any outlier are shown as a green connector. Residues present in the sample, but not in the model, are shown in grey.

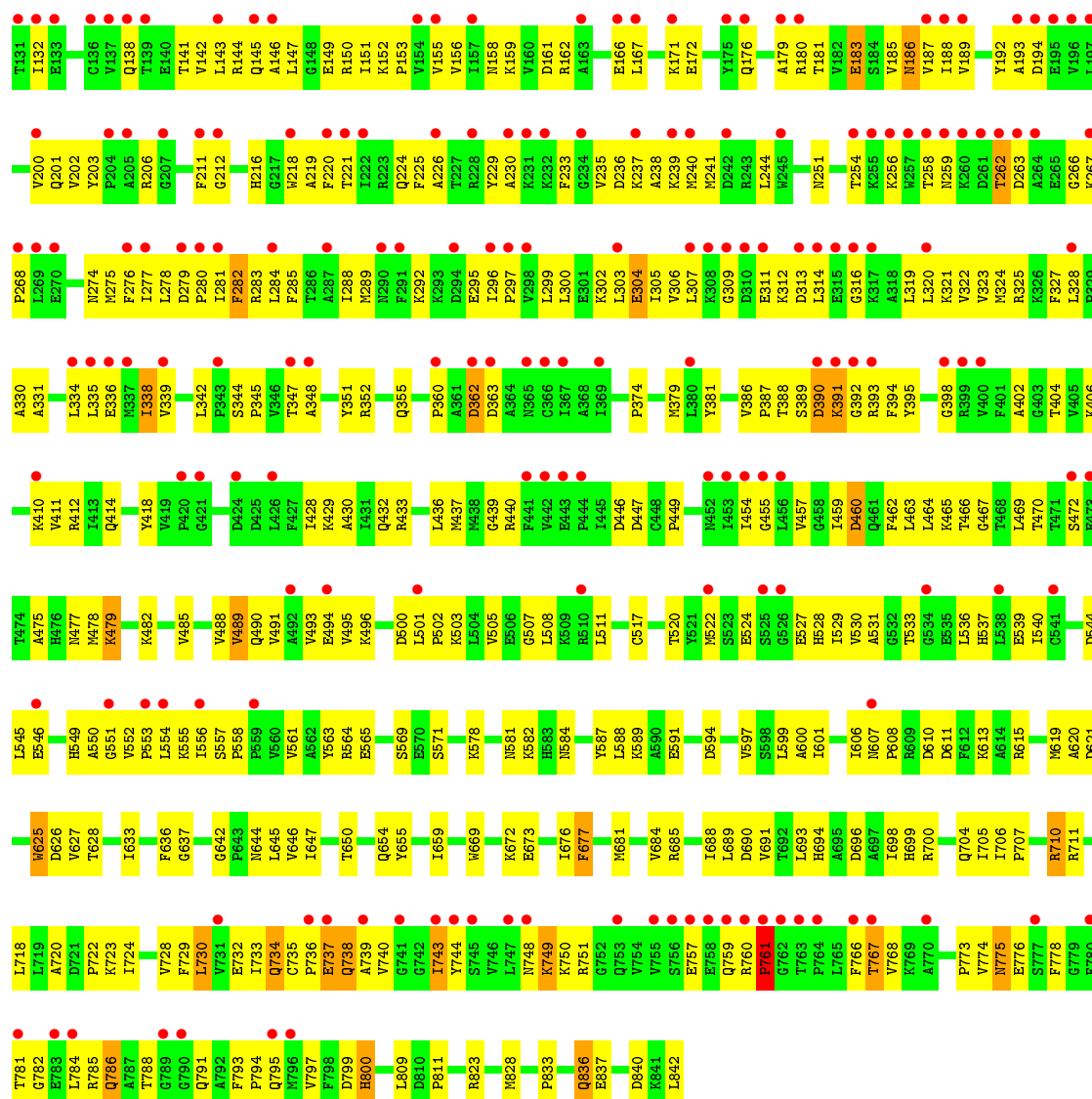
• Molecule 1: Elongation factor 2



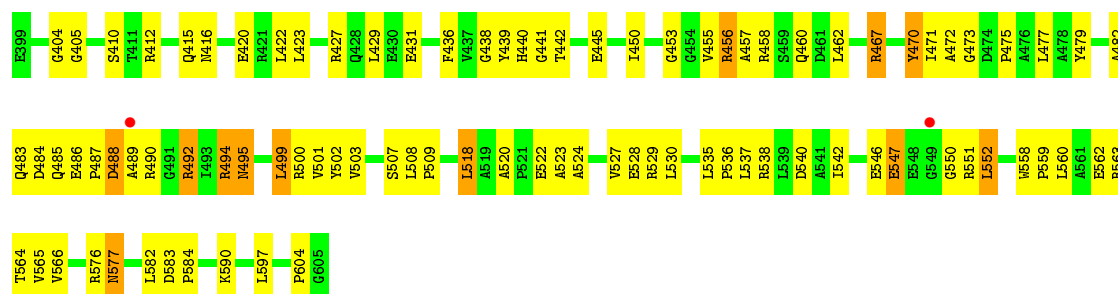
• Molecule 1: Elongation factor 2





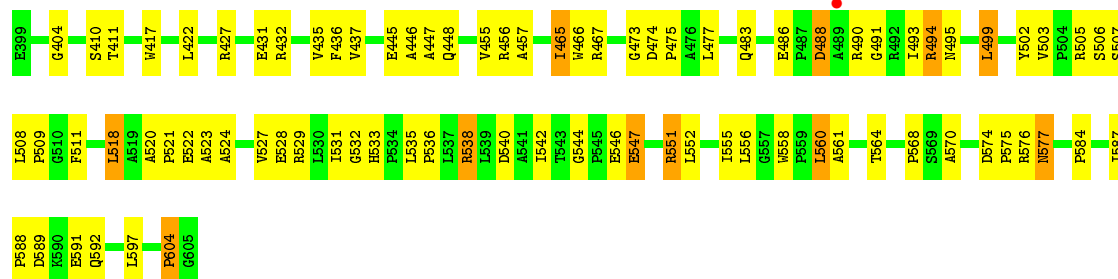


• Molecule 2: exotoxin A



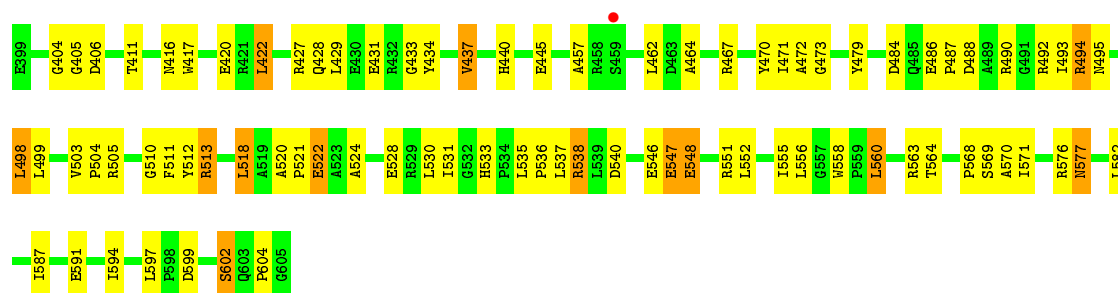
• Molecule 2: exotoxin A





• Molecule 2: exotoxin A

Chain F: 60% 34% 6%



4 Data and refinement statistics

Property	Value	Source
Space group	C 1 2 1	Depositor
Cell constants a, b, c, α , β , γ	330.84Å 68.74Å 191.46Å 90.00° 103.50° 90.00°	Depositor
Resolution (Å)	30.00 – 2.80 29.70 – 2.80	Depositor EDS
% Data completeness (in resolution range)	(Not available) (30.00-2.80) 99.3 (29.70-2.80)	Depositor EDS
R_{merge}	(Not available)	Depositor
R_{sym}	0.11	Depositor
$\langle I/\sigma(I) \rangle$ ¹	2.39 (at 2.80Å)	Xtriage
Refinement program	CNS	Depositor
R, R_{free}	0.254 , 0.274 0.254 , 0.272	Depositor DCC
R_{free} test set	2053 reflections (1.99%)	DCC
Wilson B-factor (Å ²)	52.7	Xtriage
Anisotropy	0.376	Xtriage
Bulk solvent k_{sol} (e/Å ³), B_{sol} (Å ²)	0.29 , 58.8	EDS
Estimated twinning fraction	No twinning to report.	Xtriage
L-test for twinning ²	$\langle L \rangle = 0.45$, $\langle L^2 \rangle = 0.27$	Xtriage
Outliers	0 of 103653 reflections	Xtriage
F_o, F_c correlation	0.90	EDS
Total number of atoms	24042	wwPDB-VP
Average B, all atoms (Å ²)	65.0	wwPDB-VP

Xtriage's analysis on translational NCS is as follows: *The analyses of the Patterson function reveals a significant off-origin peak that is 31.59 % of the origin peak, indicating pseudo translational symmetry. The chance of finding a peak of this or larger height randomly in a structure without pseudo translational symmetry is equal to 1.0789e-03. The detected translational NCS is most likely also responsible for the elevated intensity ratio.*

¹Intensities estimated from amplitudes.

²Theoretical values of $\langle |L| \rangle$, $\langle L^2 \rangle$ for acentric reflections are 0.5, 0.375 respectively for untwinned datasets, and 0.333, 0.2 for perfectly twinned datasets.

5 Model quality [i](#)

5.1 Standard geometry [i](#)

Bond lengths and bond angles in the following residue types are not validated in this section: DDE, P34

The Z score for a bond length (or angle) is the number of standard deviations the observed value is removed from the expected value. A bond length (or angle) with $|Z| > 5$ is considered an outlier worth inspection. RMSZ is the root-mean-square of all Z scores of the bond lengths (or angles).

Mol	Chain	Bond lengths		Bond angles	
		RMSZ	# Z >5	RMSZ	# Z >5
1	A	0.48	0/6517	0.67	1/8823 (0.0%)
1	C	0.50	0/6517	0.71	1/8823 (0.0%)
1	E	0.44	0/6517	0.64	0/8823
2	B	0.52	0/1626	0.76	0/2216
2	D	0.54	0/1626	0.77	1/2216 (0.0%)
2	F	0.49	0/1626	0.75	1/2216 (0.0%)
All	All	0.48	0/24429	0.69	4/33117 (0.0%)

There are no bond length outliers.

All (4) bond angle outliers are listed below:

Mol	Chain	Res	Type	Atoms	Z	Observed(°)	Ideal(°)
1	A	236	ASP	N-CA-C	-6.10	94.52	111.00
2	D	518	LEU	N-CA-C	5.83	126.73	111.00
2	F	518	LEU	N-CA-C	5.53	125.94	111.00
1	C	498	ALA	N-CA-C	5.23	125.12	111.00

There are no chirality outliers.

There are no planarity outliers.

5.2 Too-close contacts [i](#)

In the following table, the Non-H and H(model) columns list the number of non-hydrogen atoms and hydrogen atoms in the chain respectively. The H(added) column lists the number of hydrogen atoms added and optimized by MolProbity. The Clashes column lists the number of clashes within the asymmetric unit, whereas Symm-Clashes lists symmetry related clashes.

Mol	Chain	Non-H	H(model)	H(added)	Clashes	Symm-Clashes
1	A	6405	0	6472	339	0

Continued on next page...

Continued from previous page...

Mol	Chain	Non-H	H(model)	H(added)	Clashes	Symm-Clashes
1	C	6405	0	6472	503	0
1	E	6405	0	6472	437	0
2	B	1587	0	1539	95	0
2	D	1587	0	1539	85	0
2	F	1587	0	1539	82	0
3	B	22	0	17	0	0
3	D	22	0	17	0	0
3	F	22	0	17	1	0
All	All	24042	0	24084	1514	0

The all-atom clashscore is defined as the number of clashes found per 1000 atoms (including hydrogen atoms). The all-atom clashscore for this structure is 31.

The worst 5 of 1514 close contacts within the same asymmetric unit are listed below, sorted by their clash magnitude.

Atom-1	Atom-2	Interatomic distance (Å)	Clash overlap (Å)
1:E:552:VAL:HG22	1:E:553:PRO:CD	1.53	1.37
1:E:552:VAL:CG2	1:E:553:PRO:HD3	1.65	1.27
1:C:546:GLU:HA	1:C:554:LEU:CD1	1.71	1.18
1:C:500:ASP:OD2	1:C:552:VAL:HG11	1.44	1.18
1:C:231:LYS:HE3	1:C:232:LYS:HG3	1.26	1.15

There are no symmetry-related clashes.

5.3 Torsion angles [i](#)

5.3.1 Protein backbone [i](#)

In the following table, the Percentiles column shows the percent Ramachandran outliers of the chain as a percentile score with respect to all X-ray entries followed by that with respect to entries of similar resolution.

The Analysed column shows the number of residues for which the backbone conformation was analysed, and the total number of residues.

Mol	Chain	Analysed	Favoured	Allowed	Outliers	Percentiles	
1	A	818/842 (97%)	729 (89%)	76 (9%)	13 (2%)	12	38
1	C	818/842 (97%)	726 (89%)	75 (9%)	17 (2%)	9	29
1	E	818/842 (97%)	714 (87%)	87 (11%)	17 (2%)	9	29

Continued on next page...

Continued from previous page...

Mol	Chain	Analysed	Favoured	Allowed	Outliers	Percentiles	
2	B	205/207 (99%)	183 (89%)	21 (10%)	1 (0%)	34	69
2	D	205/207 (99%)	177 (86%)	24 (12%)	4 (2%)	9	30
2	F	205/207 (99%)	180 (88%)	24 (12%)	1 (0%)	34	69
All	All	3069/3147 (98%)	2709 (88%)	307 (10%)	53 (2%)	11	36

5 of 53 Ramachandran outliers are listed below:

Mol	Chain	Res	Type
1	A	112	SER
1	A	498	ALA
1	A	761	PRO
2	B	518	LEU
1	C	235	VAL

5.3.2 Protein sidechains ⓘ

In the following table, the Percentiles column shows the percent sidechain outliers of the chain as a percentile score with respect to all X-ray entries followed by that with respect to entries of similar resolution.

The Analysed column shows the number of residues for which the sidechain conformation was analysed, and the total number of residues.

Mol	Chain	Analysed	Rotameric	Outliers	Percentiles	
1	A	699/714 (98%)	659 (94%)	40 (6%)	25	58
1	C	699/714 (98%)	638 (91%)	61 (9%)	13	35
1	E	699/714 (98%)	663 (95%)	36 (5%)	29	62
2	B	161/162 (99%)	145 (90%)	16 (10%)	10	28
2	D	161/162 (99%)	146 (91%)	15 (9%)	11	32
2	F	161/162 (99%)	146 (91%)	15 (9%)	11	32
All	All	2580/2628 (98%)	2397 (93%)	183 (7%)	18	46

5 of 183 residues with a non-rotameric sidechain are listed below:

Mol	Chain	Res	Type
1	C	347	THR
1	C	599	LEU
2	F	422	LEU
1	C	460	ASP

Continued on next page...

Continued from previous page...

Mol	Chain	Res	Type
1	C	500	ASP

Some sidechains can be flipped to improve hydrogen bonding and reduce clashes. 5 of 75 such sidechains are listed below:

Mol	Chain	Res	Type
1	C	371	ASN
1	C	644	ASN
1	E	800	HIS
1	C	414	GLN
1	C	581	ASN

5.3.3 RNA ⓘ

There are no RNA molecules in this entry.

5.4 Non-standard residues in protein, DNA, RNA chains ⓘ

3 non-standard protein/DNA/RNA residues are modelled in this entry.

In the following table, the Counts columns list the number of bonds (or angles) for which Mogul statistics could be retrieved, the number of bonds (or angles) that are observed in the model and the number of bonds (or angles) that are defined in the chemical component dictionary. The Link column lists molecule types, if any, to which the group is linked. The Z score for a bond length (or angle) is the number of standard deviations the observed value is removed from the expected value. A bond length (or angle) with $|Z| > 2$ is considered an outlier worth inspection. RMSZ is the root-mean-square of all Z scores of the bond lengths (or angles).

Mol	Type	Chain	Res	Link	Bond lengths			Bond angles		
					Counts	RMSZ	$\# Z > 2$	Counts	RMSZ	$\# Z > 2$
1	DDE	A	699	1	5,10,21	0.72	0	3,12,30	1.82	2 (66%)
1	DDE	C	699	1	5,10,21	0.64	0	3,12,30	1.75	2 (66%)
1	DDE	E	699	1	5,10,21	0.59	0	3,12,30	1.80	2 (66%)

In the following table, the Chirals column lists the number of chiral outliers, the number of chiral centers analysed, the number of these observed in the model and the number defined in the chemical component dictionary. Similar counts are reported in the Torsion and Rings columns. '-' means no outliers of that kind were identified.

Mol	Type	Chain	Res	Link	Chirals	Torsions	Rings
1	DDE	A	699	1	-	0/4/6/23	0/1/1/1

Continued on next page...

Continued from previous page...

Mol	Type	Chain	Res	Link	Chirals	Torsions	Rings
1	DDE	C	699	1	-	0/4/6/23	0/1/1/1
1	DDE	E	699	1	-	0/4/6/23	0/1/1/1

There are no bond length outliers.

The worst 5 of 6 bond angle outliers are listed below:

Mol	Chain	Res	Type	Atoms	Z	Observed(°)	Ideal(°)
1	E	699	DDE	O-C-CA	-2.22	119.70	125.49
1	A	699	DDE	O-C-CA	-2.22	119.71	125.49
1	C	699	DDE	O-C-CA	-2.09	120.03	125.49
1	E	699	DDE	CD2-NE2-CE1	2.05	108.94	105.71
1	C	699	DDE	CD2-NE2-CE1	2.06	108.95	105.71

There are no chirality outliers.

There are no torsion outliers.

There are no ring outliers.

2 monomers are involved in 4 short contacts:

Mol	Chain	Res	Type	Clashes	Symm-Clashes
1	C	699	DDE	3	0
1	E	699	DDE	1	0

5.5 Carbohydrates [i](#)

There are no carbohydrates in this entry.

5.6 Ligand geometry [i](#)

3 ligands are modelled in this entry.

In the following table, the Counts columns list the number of bonds (or angles) for which Mogul statistics could be retrieved, the number of bonds (or angles) that are observed in the model and the number of bonds (or angles) that are defined in the chemical component dictionary. The Link column lists molecule types, if any, to which the group is linked. The Z score for a bond length (or angle) is the number of standard deviations the observed value is removed from the expected value. A bond length (or angle) with $|Z| > 2$ is considered an outlier worth inspection. RMSZ is the root-mean-square of all Z scores of the bond lengths (or angles).

Mol	Type	Chain	Res	Link	Bond lengths			Bond angles		
					Counts	RMSZ	# Z > 2	Counts	RMSZ	# Z > 2
3	P34	B	700	-	24,24,24	2.29	10 (41%)	29,34,34	2.66	8 (27%)
3	P34	D	701	-	24,24,24	2.10	9 (37%)	29,34,34	2.45	8 (27%)
3	P34	F	702	-	24,24,24	2.23	10 (41%)	29,34,34	2.76	8 (27%)

In the following table, the Chirals column lists the number of chiral outliers, the number of chiral centers analysed, the number of these observed in the model and the number defined in the chemical component dictionary. Similar counts are reported in the Torsion and Rings columns. '-' means no outliers of that kind were identified.

Mol	Type	Chain	Res	Link	Chirals	Torsions	Rings
3	P34	B	700	-	-	0/8/8/8	0/3/3/3
3	P34	D	701	-	-	0/8/8/8	0/3/3/3
3	P34	F	702	-	-	0/8/8/8	0/3/3/3

The worst 5 of 29 bond length outliers are listed below:

Mol	Chain	Res	Type	Atoms	Z	Observed(Å)	Ideal(Å)
3	D	701	P34	CAP-NAM	-3.39	1.35	1.41
3	F	702	P34	CAP-NAM	-3.25	1.35	1.41
3	B	700	P34	CAP-NAM	-2.85	1.36	1.41
3	F	702	P34	CAH-CAS	2.03	1.45	1.41
3	B	700	P34	CAU-CAR	2.09	1.46	1.41

The worst 5 of 24 bond angle outliers are listed below:

Mol	Chain	Res	Type	Atoms	Z	Observed(°)	Ideal(°)
3	F	702	P34	O-C-NAM	-4.55	115.58	123.72
3	B	700	P34	O-C-NAM	-4.30	116.04	123.72
3	B	700	P34	CAK-CAP-NAM	-4.22	110.69	122.79
3	F	702	P34	CAK-CAP-NAM	-4.13	110.95	122.79
3	D	701	P34	O-C-NAM	-4.06	116.47	123.72

There are no chirality outliers.

There are no torsion outliers.

There are no ring outliers.

1 monomer is involved in 1 short contact:

Mol	Chain	Res	Type	Clashes	Symm-Clashes
3	F	702	P34	1	0

5.7 Other polymers [i](#)

There are no such residues in this entry.

5.8 Polymer linkage issues [i](#)

There are no chain breaks in this entry.

6 Fit of model and data [i](#)

6.1 Protein, DNA and RNA chains [i](#)

In the following table, the column labelled ‘#RSRZ> 2’ contains the number (and percentage) of RSRZ outliers, followed by percent RSRZ outliers for the chain as percentile scores relative to all X-ray entries and entries of similar resolution. The OWAB column contains the minimum, median, 95th percentile and maximum values of the occupancy-weighted average B-factor per residue. The column labelled ‘Q< 0.9’ lists the number of (and percentage) of residues with an average occupancy less than 0.9.

Mol	Chain	Analysed	<RSRZ>	#RSRZ>2	OWAB(Å ²)	Q<0.9
1	A	822/842 (97%)	0.01	9 (1%) 82 74	16, 52, 85, 106	0
1	C	822/842 (97%)	0.38	53 (6%) 23 14	19, 66, 124, 136	0
1	E	822/842 (97%)	1.27	227 (27%) 1 0	20, 105, 128, 148	0
2	B	207/207 (100%)	-0.35	2 (0%) 84 77	9, 32, 61, 79	0
2	D	207/207 (100%)	-0.21	1 (0%) 91 88	11, 33, 64, 79	0
2	F	207/207 (100%)	-0.21	1 (0%) 91 88	18, 38, 70, 84	0
All	All	3087/3147 (98%)	0.39	293 (9%) 10 5	9, 58, 122, 148	0

The worst 5 of 293 RSRZ outliers are listed below:

Mol	Chain	Res	Type	RSRZ
1	C	551	GLY	7.6
1	E	314	LEU	6.9
1	E	240	MET	6.4
1	E	759	GLN	6.3
1	E	257	TRP	6.2

6.2 Non-standard residues in protein, DNA, RNA chains [i](#)

In the following table, the Atoms column lists the number of modelled atoms in the group and the number defined in the chemical component dictionary. LLDF column lists the quality of electron density of the group with respect to its neighbouring residues in protein, DNA or RNA chains. The B-factors column lists the minimum, median, 95th percentile and maximum values of B factors of atoms in the group. The column labelled ‘Q< 0.9’ lists the number of atoms with occupancy less than 0.9.

Mol	Type	Chain	Res	Atoms	RSCC	RSR	LLDF	B-factors(Å ²)	Q<0.9
1	DDE	C	699	10/21	0.94	0.12	-	49,55,57,58	0
1	DDE	A	699	10/21	0.95	0.10	-	42,44,47,48	0

Continued on next page...

Continued from previous page...

Mol	Type	Chain	Res	Atoms	RSCC	RSR	LLDF	B-factors(\AA^2)	Q<0.9
1	DDE	E	699	10/21	0.94	0.15	-	42,46,47,48	0

6.3 Carbohydrates [i](#)

There are no carbohydrates in this entry.

6.4 Ligands [i](#)

In the following table, the Atoms column lists the number of modelled atoms in the group and the number defined in the chemical component dictionary. LLDF column lists the quality of electron density of the group with respect to its neighbouring residues in protein, DNA or RNA chains. The B-factors column lists the minimum, median, 95th percentile and maximum values of B factors of atoms in the group. The column labelled 'Q< 0.9' lists the number of atoms with occupancy less than 0.9.

Mol	Type	Chain	Res	Atoms	RSCC	RSR	LLDF	B-factors(\AA^2)	Q<0.9
3	P34	D	701	22/22	0.89	0.25	1.76	18,24,54,55	0
3	P34	F	702	22/22	0.90	0.25	0.93	12,17,57,58	0
3	P34	B	700	22/22	0.92	0.18	-0.23	8,13,34,35	0

6.5 Other polymers [i](#)

There are no such residues in this entry.