



Full wwPDB X-ray Structure Validation Report ⓘ

Feb 19, 2016 – 09:00 PM GMT

PDB ID : 4ZME
Title : Crystal Structure of the Alpha-kinase Domain of Myosin-II Heavy Chain Kinase A in Complex with Adenosine
Authors : Ye, Q.; Jia, Z.
Deposited on : 2015-05-03
Resolution : 1.98 Å(reported)

This is a Full wwPDB X-ray Structure Validation Report for a publicly released PDB entry.
We welcome your comments at validation@mail.wwpdb.org
A user guide is available at
<http://wwpdb.org/validation/2016/XrayValidationReportHelp>
with specific help available everywhere you see the ⓘ symbol.

The following versions of software and data (see [references ⓘ](#)) were used in the production of this report:

MolProbity : 4.02b-467
Mogul : 1.7.1 (RC1), CSD as537be (2016)
Xtriage (Phenix) : 1.9-1692
EDS : rb-20026982
Percentile statistics : 20151230.v01 (using entries in the PDB archive December 30th 2015)
Refmac : 5.8.0135
CCP4 : 6.5.0
Ideal geometry (proteins) : Engh & Huber (2001)
Ideal geometry (DNA, RNA) : Parkinson et al. (1996)
Validation Pipeline (wwPDB-VP) : rb-20026982

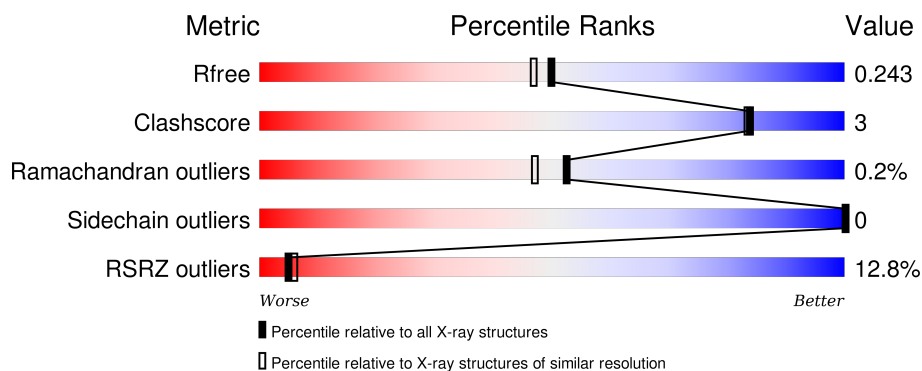
1 Overall quality at a glance

The following experimental techniques were used to determine the structure:

X-RAY DIFFRACTION


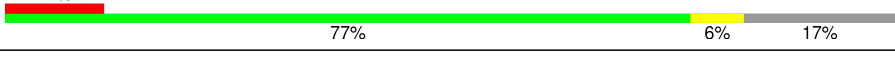
The reported resolution of this entry is 1.98 Å.

Percentile scores (ranging between 0-100) for global validation metrics of the entry are shown in the following graphic. The table shows the number of entries on which the scores are based.



Metric	Whole archive (#Entries)	Similar resolution (#Entries, resolution range(Å))
R_{free}	91344	8664 (2.00-1.96)
Clashscore	102246	9905 (2.00-1.96)
Ramachandran outliers	100387	9792 (2.00-1.96)
Sidechain outliers	100360	9791 (2.00-1.96)
RSRZ outliers	91569	8679 (2.00-1.96)

The table below summarises the geometric issues observed across the polymeric chains and their fit to the electron density. The red, orange, yellow and green segments on the lower bar indicate the fraction of residues that contain outliers for ≥ 3 , 2, 1 and 0 types of geometric quality criteria. A grey segment represents the fraction of residues that are not modelled. The numeric value for each fraction is indicated below the corresponding segment, with a dot representing fractions $\leq 5\%$. The upper red bar (where present) indicates the fraction of residues that have poor fit to the electron density. The numeric value is given above the bar.

Mol	Chain	Length	Quality of chain
1	A	307	 11% 81% 15%
1	B	307	 11% 77% 6% 17%

The following table lists non-polymeric compounds, carbohydrate monomers and non-standard residues in protein, DNA, RNA chains that are outliers for geometric or electron-density-fit criteria:

Mol	Type	Chain	Res	Chirality	Geometry	Clashes	Electron density
2	ZN	B	901	-	-	X	-

2 Entry composition

There are 6 unique types of molecules in this entry. The entry contains 4608 atoms, of which 0 are hydrogens and 0 are deuteriums.

In the tables below, the ZeroOcc column contains the number of atoms modelled with zero occupancy, the AltConf column contains the number of residues with at least one atom in alternate conformation and the Trace column contains the number of residues modelled with at most 2 atoms.

- Molecule 1 is a protein called Myosin heavy chain kinase A.

Mol	Chain	Residues	Atoms						ZeroOcc	AltConf	Trace
1	A	262	Total	C	N	O	P	S	0	0	0
			2063	1318	346	386	1	12			
1	B	255	Total	C	N	O	P	S	0	0	0
			2016	1290	337	376	1	12			

There are 34 discrepancies between the modelled and reference sequences:

Chain	Residue	Modelled	Actual	Comment	Reference
A	535	MET	-	initiating methionine	UNP P42527
A	536	GLY	-	expression tag	UNP P42527
A	537	GLY	-	expression tag	UNP P42527
A	538	HIS	-	expression tag	UNP P42527
A	539	HIS	-	expression tag	UNP P42527
A	540	HIS	-	expression tag	UNP P42527
A	541	HIS	-	expression tag	UNP P42527
A	542	HIS	-	expression tag	UNP P42527
A	543	HIS	-	expression tag	UNP P42527
A	544	GLY	-	expression tag	UNP P42527
A	545	GLU	-	expression tag	UNP P42527
A	546	ASN	-	expression tag	UNP P42527
A	547	LEU	-	expression tag	UNP P42527
A	548	TYR	-	expression tag	UNP P42527
A	549	PHE	-	expression tag	UNP P42527
A	550	GLN	-	expression tag	UNP P42527
A	551	GLY	-	expression tag	UNP P42527
B	535	MET	-	initiating methionine	UNP P42527
B	536	GLY	-	expression tag	UNP P42527
B	537	GLY	-	expression tag	UNP P42527
B	538	HIS	-	expression tag	UNP P42527
B	539	HIS	-	expression tag	UNP P42527
B	540	HIS	-	expression tag	UNP P42527
B	541	HIS	-	expression tag	UNP P42527
B	542	HIS	-	expression tag	UNP P42527

Continued on next page...

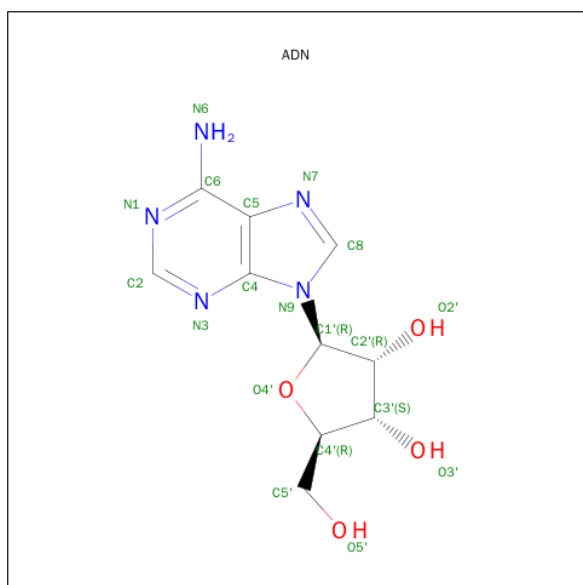
Continued from previous page...

Chain	Residue	Modelled	Actual	Comment	Reference
B	543	HIS	-	expression tag	UNP P42527
B	544	GLY	-	expression tag	UNP P42527
B	545	GLU	-	expression tag	UNP P42527
B	546	ASN	-	expression tag	UNP P42527
B	547	LEU	-	expression tag	UNP P42527
B	548	TYR	-	expression tag	UNP P42527
B	549	PHE	-	expression tag	UNP P42527
B	550	GLN	-	expression tag	UNP P42527
B	551	GLY	-	expression tag	UNP P42527

- Molecule 2 is ZINC ION (three-letter code: ZN) (formula: Zn).

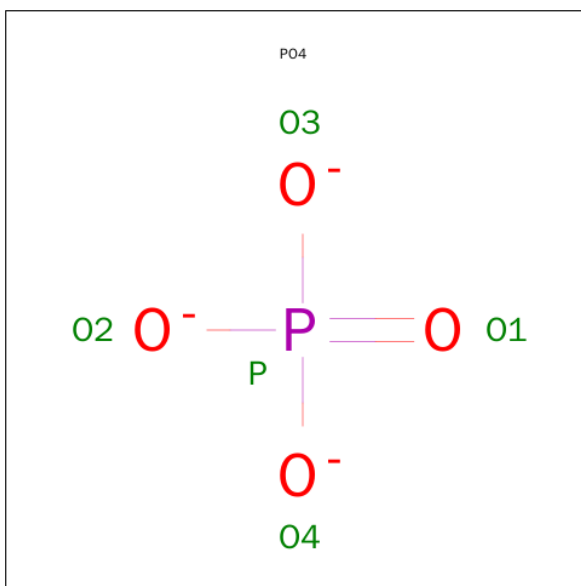
Mol	Chain	Residues	Atoms		ZeroOcc	AltConf
2	B	1	Total	Zn	0	0
			1	1		
2	A	1	Total	Zn	0	0
			1	1		

- Molecule 3 is ADENOSINE (three-letter code: ADN) (formula: C₁₀H₁₃N₅O₄).



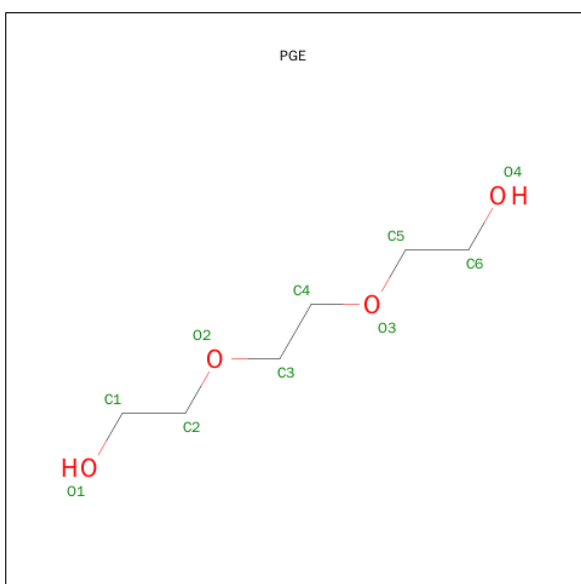
Mol	Chain	Residues	Atoms				ZeroOcc	AltConf
3	A	1	Total	C	N	O	0	0
			19	10	5	4		
3	B	1	Total	C	N	O	0	0
			19	10	5	4		

- Molecule 4 is PHOSPHATE ION (three-letter code: PO4) (formula: O_4P).



Mol	Chain	Residues	Atoms			ZeroOcc	AltConf
4	A	1	Total	O	P	0	0
			5	4	1		
4	A	1	Total	O	P	0	0
			5	4	1		
4	B	1	Total	O	P	0	0
			5	4	1		
4	B	1	Total	O	P	0	0
			5	4	1		

- Molecule 5 is TRIETHYLENE GLYCOL (three-letter code: PGE) (formula: $C_6H_{14}O_4$).



Mol	Chain	Residues	Atoms			ZeroOcc	AltConf
5	B	1	Total	C	O	0	0
			10	6	4		

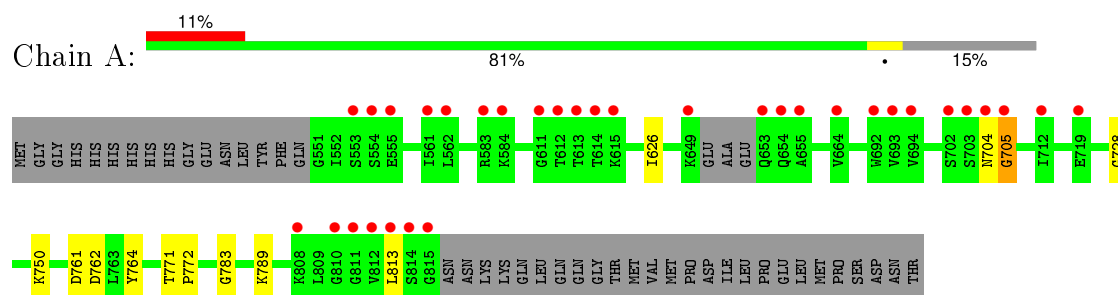
- Molecule 6 is water.

Mol	Chain	Residues	Atoms		ZeroOcc	AltConf
6	A	258	Total	O	0	0
			258	258		
6	B	201	Total	O	0	0
			201	201		

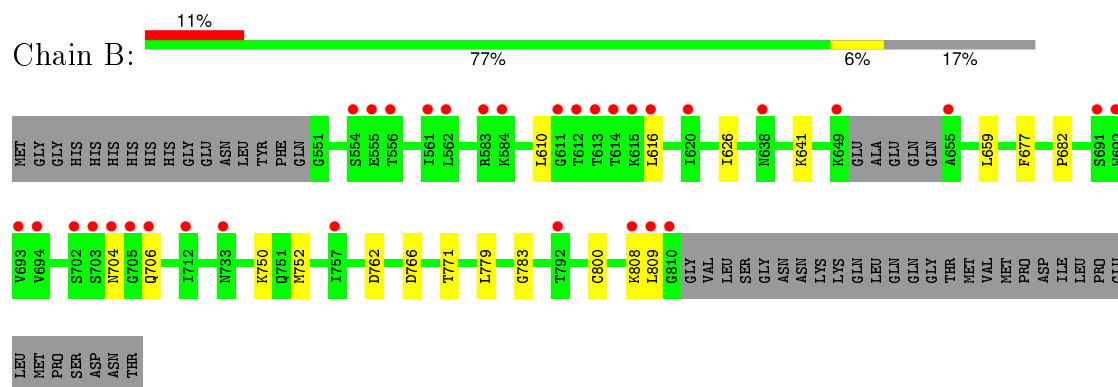
3 Residue-property plots [i](#)

These plots are drawn for all protein, RNA and DNA chains in the entry. The first graphic for a chain summarises the proportions of errors displayed in the second graphic. The second graphic shows the sequence view annotated by issues in geometry and electron density. Residues are color-coded according to the number of geometric quality criteria for which they contain at least one outlier: green = 0, yellow = 1, orange = 2 and red = 3 or more. A red dot above a residue indicates a poor fit to the electron density ($\text{RSRZ} > 2$). Stretches of 2 or more consecutive residues without any outlier are shown as a green connector. Residues present in the sample, but not in the model, are shown in grey.

• Molecule 1: Myosin heavy chain kinase A



• Molecule 1: Myosin heavy chain kinase A



4 Data and refinement statistics

Property	Value	Source
Space group	P 21 21 2	Depositor
Cell constants a, b, c, α , β , γ	83.19Å 111.29Å 79.56Å 90.00° 90.00° 90.00°	Depositor
Resolution (Å)	79.56 – 1.98 28.75 – 1.98	Depositor EDS
% Data completeness (in resolution range)	94.3 (79.56-1.98) 94.4 (28.75-1.98)	Depositor EDS
R_{merge}	0.09	Depositor
R_{sym}	(Not available)	Depositor
$\langle I/\sigma(I) \rangle$ ¹	4.29 (at 1.98Å)	Xtriage
Refinement program	REFMAC	Depositor
R, R_{free}	0.214 , 0.236 0.221 , 0.243	Depositor DCC
R_{free} test set	2480 reflections (5.33%)	DCC
Wilson B-factor (Å ²)	29.2	Xtriage
Anisotropy	0.007	Xtriage
Bulk solvent k_{sol} (e/Å ³), B_{sol} (Å ²)	0.39 , 56.1	EDS
Estimated twinning fraction	0.012 for l,-k,h	Xtriage
L-test for twinning ²	$\langle L \rangle = 0.49$, $\langle L^2 \rangle = 0.32$	Xtriage
Outliers	0 of 48996 reflections	Xtriage
F_o, F_c correlation	0.95	EDS
Total number of atoms	4608	wwPDB-VP
Average B, all atoms (Å ²)	37.0	wwPDB-VP

Xtriage's analysis on translational NCS is as follows: *The analyses of the Patterson function reveals a significant off-origin peak that is 19.88 % of the origin peak, indicating pseudo translational symmetry. The chance of finding a peak of this or larger height randomly in a structure without pseudo translational symmetry is equal to 9.8383e-03. The detected translational NCS is most likely also responsible for the elevated intensity ratio.*

¹ Intensities estimated from amplitudes.

² Theoretical values of $\langle |L| \rangle$, $\langle L^2 \rangle$ for acentric reflections are 0.5, 0.375 respectively for untwinned datasets, and 0.333, 0.2 for perfectly twinned datasets.

5 Model quality

5.1 Standard geometry

Bond lengths and bond angles in the following residue types are not validated in this section: ADN, ZN, PGE, PO4, PHD

The Z score for a bond length (or angle) is the number of standard deviations the observed value is removed from the expected value. A bond length (or angle) with $|Z| > 5$ is considered an outlier worth inspection. RMSZ is the root-mean-square of all Z scores of the bond lengths (or angles).

Mol	Chain	Bond lengths		Bond angles	
		RMSZ	# Z >5	RMSZ	# Z >5
1	A	0.50	0/2093	0.68	0/2821
1	B	0.48	0/2046	0.68	0/2758
All	All	0.49	0/4139	0.68	0/5579

There are no bond length outliers.

There are no bond angle outliers.

There are no chirality outliers.

There are no planarity outliers.

5.2 Too-close contacts

In the following table, the Non-H and H(model) columns list the number of non-hydrogen atoms and hydrogen atoms in the chain respectively. The H(added) column lists the number of hydrogen atoms added and optimized by MolProbity. The Clashes column lists the number of clashes within the asymmetric unit, whereas Symm-Clashes lists symmetry related clashes.

Mol	Chain	Non-H	H(model)	H(added)	Clashes	Symm-Clashes
1	A	2063	0	2083	11	0
1	B	2016	0	2037	18	0
2	A	1	0	0	0	0
2	B	1	0	0	2	0
3	A	19	0	13	0	0
3	B	19	0	13	0	0
4	A	10	0	0	0	0
4	B	10	0	0	0	0
5	B	10	0	14	1	0
6	A	258	0	0	2	0
6	B	201	0	0	2	0
All	All	4608	0	4160	25	0

The all-atom clashscore is defined as the number of clashes found per 1000 atoms (including hydrogen atoms). The all-atom clashscore for this structure is 3.

All (25) close contacts within the same asymmetric unit are listed below, sorted by their clash magnitude.

Atom-1	Atom-2	Interatomic distance (Å)	Clash overlap (Å)
1:B:610:LEU:HD22	1:B:616:LEU:HD21	1.70	0.74
1:B:800:CYS:SG	2:B:901:ZN:ZN	1.89	0.62
1:A:813:LEU:HD21	1:B:626:ILE:HD12	1.83	0.60
1:A:704:ASN:OD1	1:A:705:GLY:N	2.34	0.60
1:A:750:LYS:HD2	1:B:626:ILE:HD13	1.84	0.59
1:B:677:PHE:CE1	1:B:682:PRO:HG3	2.40	0.57
1:A:762:ASP:HA	1:A:764:TYR:CZ	2.40	0.56
1:A:813:LEU:HD21	1:B:626:ILE:CD1	2.38	0.54
1:B:704:ASN:HB3	1:B:706:GLN:HG2	1.90	0.54
1:A:762:ASP:HA	1:A:764:TYR:CE1	2.44	0.53
1:B:800:CYS:HG	2:B:901:ZN:ZN	1.23	0.51
1:B:771:THR:O	1:B:783:GLY:HA2	2.11	0.50
1:A:771:THR:O	1:A:783:GLY:HA2	2.11	0.50
1:B:704:ASN:HB3	1:B:706:GLN:CG	2.43	0.49
1:B:641:LYS:NZ	6:B:1012:HOH:O	2.46	0.48
1:A:761:ASP:O	6:A:1101:HOH:O	2.21	0.46
1:B:808:LYS:HA	5:B:905:PGE:O1	2.17	0.45
6:A:1314:HOH:O	1:B:752:MET:SD	2.61	0.44
1:B:766:PHD:OP2	1:B:766:PHD:OD2	2.34	0.43
1:A:772:PRO:HG2	1:A:813:LEU:HD12	2.00	0.43
1:B:762:ASP:HB2	6:B:1009:HOH:O	2.18	0.42
1:B:659:LEU:HD11	1:B:779:LEU:HG	2.01	0.42
1:A:728:GLY:HA3	1:A:789:LYS:HG3	2.02	0.42
1:B:809:LEU:HD12	1:B:809:LEU:N	2.35	0.41
1:A:626:ILE:HD13	1:B:750:LYS:HD2	2.03	0.41

There are no symmetry-related clashes.

5.3 Torsion angles ⓘ

5.3.1 Protein backbone ⓘ

In the following table, the Percentiles column shows the percent Ramachandran outliers of the chain as a percentile score with respect to all X-ray entries followed by that with respect to entries of similar resolution.

The Analysed column shows the number of residues for which the backbone conformation was

analysed, and the total number of residues.

Mol	Chain	Analysed	Favoured	Allowed	Outliers	Percentiles	
1	A	257/307 (84%)	252 (98%)	4 (2%)	1 (0%)	39	31
1	B	250/307 (81%)	246 (98%)	4 (2%)	0	100	100
All	All	507/614 (83%)	498 (98%)	8 (2%)	1 (0%)	52	47

All (1) Ramachandran outliers are listed below:

Mol	Chain	Res	Type
1	A	705	GLY

5.3.2 Protein sidechains [i](#)

In the following table, the Percentiles column shows the percent sidechain outliers of the chain as a percentile score with respect to all X-ray entries followed by that with respect to entries of similar resolution.

The Analysed column shows the number of residues for which the sidechain conformation was analysed, and the total number of residues.

Mol	Chain	Analysed	Rotameric	Outliers	Percentiles	
1	A	229/269 (85%)	229 (100%)	0	100	100
1	B	224/269 (83%)	224 (100%)	0	100	100
All	All	453/538 (84%)	453 (100%)	0	100	100

There are no protein residues with a non-rotameric sidechain to report.

Some sidechains can be flipped to improve hydrogen bonding and reduce clashes. All (2) such sidechains are listed below:

Mol	Chain	Res	Type
1	A	654	GLN
1	B	704	ASN

5.3.3 RNA [i](#)

There are no RNA molecules in this entry.

5.4 Non-standard residues in protein, DNA, RNA chains [i](#)

2 non-standard protein/DNA/RNA residues are modelled in this entry.

In the following table, the Counts columns list the number of bonds (or angles) for which Mogul statistics could be retrieved, the number of bonds (or angles) that are observed in the model and the number of bonds (or angles) that are defined in the chemical component dictionary. The Link column lists molecule types, if any, to which the group is linked. The Z score for a bond length (or angle) is the number of standard deviations the observed value is removed from the expected value. A bond length (or angle) with $|Z| > 2$ is considered an outlier worth inspection. RMSZ is the root-mean-square of all Z scores of the bond lengths (or angles).

Mol	Type	Chain	Res	Link	Bond lengths			Bond angles		
					Counts	RMSZ	# Z > 2	Counts	RMSZ	# Z > 2
1	PHD	A	766	1	9,11,12	2.51	3 (33%)	10,15,17	1.94	4 (40%)
1	PHD	B	766	1	9,11,12	1.47	2 (22%)	10,15,17	2.75	4 (40%)

In the following table, the Chirals column lists the number of chiral outliers, the number of chiral centers analysed, the number of these observed in the model and the number defined in the chemical component dictionary. Similar counts are reported in the Torsion and Rings columns. '-' means no outliers of that kind were identified.

Mol	Type	Chain	Res	Link	Chirals	Torsions	Rings
1	PHD	A	766	1	-	0/7/11/13	0/0/0/0
1	PHD	B	766	1	-	0/7/11/13	0/0/0/0

All (5) bond length outliers are listed below:

Mol	Chain	Res	Type	Atoms	Z	Observed(Å)	Ideal(Å)
1	A	766	PHD	P-OP2	-2.28	1.46	1.54
1	B	766	PHD	OD1-CG	2.69	1.40	1.37
1	B	766	PHD	P-OD1	3.18	1.64	1.59
1	A	766	PHD	P-OD1	4.10	1.66	1.59
1	A	766	PHD	OD1-CG	5.59	1.44	1.37

All (8) bond angle outliers are listed below:

Mol	Chain	Res	Type	Atoms	Z	Observed(°)	Ideal(°)
1	B	766	PHD	OD1-CG-OD2	-5.54	109.99	121.67
1	B	766	PHD	CA-CB-CG	-4.49	105.11	113.12
1	A	766	PHD	OD2-CG-CB	-3.71	116.90	124.74
1	A	766	PHD	OP2-P-OD1	-2.79	96.95	105.49
1	A	766	PHD	O-C-CA	-2.07	120.18	125.72
1	A	766	PHD	OP3-P-OP2	2.51	116.67	107.44
1	B	766	PHD	OP2-P-OD1	2.75	113.93	105.49
1	B	766	PHD	OP3-P-OP1	3.20	121.06	110.63

There are no chirality outliers.

There are no torsion outliers.

There are no ring outliers.

1 monomer is involved in 1 short contact:

Mol	Chain	Res	Type	Clashes	Symm-Clashes
1	B	766	PHD	1	0

5.5 Carbohydrates [i](#)

There are no carbohydrates in this entry.

5.6 Ligand geometry [i](#)

Of 9 ligands modelled in this entry, 2 are monoatomic - leaving 7 for Mogul analysis.

In the following table, the Counts columns list the number of bonds (or angles) for which Mogul statistics could be retrieved, the number of bonds (or angles) that are observed in the model and the number of bonds (or angles) that are defined in the chemical component dictionary. The Link column lists molecule types, if any, to which the group is linked. The Z score for a bond length (or angle) is the number of standard deviations the observed value is removed from the expected value. A bond length (or angle) with $|Z| > 2$ is considered an outlier worth inspection. RMSZ is the root-mean-square of all Z scores of the bond lengths (or angles).

Mol	Type	Chain	Res	Link	Bond lengths			Bond angles		
					Counts	RMSZ	$\# Z > 2$	Counts	RMSZ	$\# Z > 2$
3	ADN	A	1002	-	18,21,21	1.16	1 (5%)	16,31,31	2.49	3 (18%)
4	PO4	A	1003	-	4,4,4	1.26	0	6,6,6	0.23	0
4	PO4	A	1004	-	4,4,4	1.05	0	6,6,6	0.33	0
3	ADN	B	902	-	18,21,21	1.17	2 (11%)	16,31,31	2.11	2 (12%)
4	PO4	B	903	-	4,4,4	1.10	0	6,6,6	0.28	0
4	PO4	B	904	-	4,4,4	1.11	0	6,6,6	0.33	0
5	PGE	B	905	-	9,9,9	0.50	0	8,8,8	0.43	0

In the following table, the Chirals column lists the number of chiral outliers, the number of chiral centers analysed, the number of these observed in the model and the number defined in the chemical component dictionary. Similar counts are reported in the Torsion and Rings columns. '-' means no outliers of that kind were identified.

Mol	Type	Chain	Res	Link	Chirals	Torsions	Rings
3	ADN	A	1002	-	-	0/2/22/22	0/3/3/3
4	PO4	A	1003	-	-	0/0/0/0	0/0/0/0
4	PO4	A	1004	-	-	0/0/0/0	0/0/0/0
3	ADN	B	902	-	-	0/2/22/22	0/3/3/3

Continued on next page...

Continued from previous page...

Mol	Type	Chain	Res	Link	Chirals	Torsions	Rings
4	PO4	B	903	-	-	0/0/0/0	0/0/0/0
4	PO4	B	904	-	-	0/0/0/0	0/0/0/0
5	PGE	B	905	-	-	0/7/7/7	0/0/0/0

All (3) bond length outliers are listed below:

Mol	Chain	Res	Type	Atoms	Z	Observed(Å)	Ideal(Å)
3	B	902	ADN	O4'-C1'	2.06	1.44	1.41
3	B	902	ADN	C5-C4	2.77	1.46	1.40
3	A	1002	ADN	C5-C4	3.07	1.47	1.40

All (5) bond angle outliers are listed below:

Mol	Chain	Res	Type	Atoms	Z	Observed(°)	Ideal(°)
3	A	1002	ADN	N3-C2-N1	-8.35	122.31	128.87
3	B	902	ADN	N3-C2-N1	-7.10	123.30	128.87
3	A	1002	ADN	C1'-N9-C4	-3.13	123.31	126.81
3	A	1002	ADN	C5'-C4'-C3'	-2.09	110.09	115.08
3	B	902	ADN	C4'-O4'-C1'	2.26	112.04	109.64

There are no chirality outliers.

There are no torsion outliers.

There are no ring outliers.

1 monomer is involved in 1 short contact:

Mol	Chain	Res	Type	Clashes	Symm-Clashes
5	B	905	PGE	1	0

5.7 Other polymers [i](#)

There are no such residues in this entry.

5.8 Polymer linkage issues [i](#)

There are no chain breaks in this entry.

6 Fit of model and data ⓘ

6.1 Protein, DNA and RNA chains ⓘ

In the following table, the column labelled ‘#RSRZ> 2’ contains the number (and percentage) of RSRZ outliers, followed by percent RSRZ outliers for the chain as percentile scores relative to all X-ray entries and entries of similar resolution. The OWAB column contains the minimum, median, 95th percentile and maximum values of the occupancy-weighted average B-factor per residue. The column labelled ‘Q< 0.9’ lists the number of (and percentage) of residues with an average occupancy less than 0.9.

Mol	Chain	Analysed	<RSRZ>	#RSRZ>2	OWAB(Å ²)	Q<0.9
1	A	261/307 (85%)	0.70	33 (12%) 5 6	19, 31, 65, 88	0
1	B	254/307 (82%)	0.74	33 (12%) 5 6	21, 36, 63, 84	0
All	All	515/614 (83%)	0.72	66 (12%) 5 6	19, 34, 65, 88	0

All (66) RSRZ outliers are listed below:

Mol	Chain	Res	Type	RSRZ
1	B	613	THR	8.8
1	B	614	THR	8.4
1	A	702	SER	7.4
1	B	702	SER	7.0
1	B	703	SER	6.9
1	A	703	SER	6.9
1	A	613	THR	6.9
1	A	654	GLN	6.6
1	A	614	THR	6.5
1	B	615	LYS	6.2
1	B	704	ASN	6.1
1	A	615	LYS	5.9
1	B	809	LEU	5.7
1	A	815	GLY	5.5
1	B	612	THR	4.9
1	A	814	SER	4.8
1	B	649	LYS	4.5
1	A	705	GLY	4.4
1	A	554	SER	3.6
1	A	653	GLN	3.6
1	A	611	GLY	3.5
1	B	705	GLY	3.5
1	A	612	THR	3.5
1	B	706	GLN	3.4

Continued on next page...

Continued from previous page...

Mol	Chain	Res	Type	RSRZ
1	A	712	ILE	3.4
1	A	583	ARG	3.4
1	B	554	SER	3.3
1	A	555	GLU	3.3
1	B	808	LYS	3.2
1	A	694	VAL	3.2
1	B	712	ILE	3.2
1	A	649	LYS	3.2
1	B	583	ARG	3.1
1	B	616	LEU	3.0
1	B	694	VAL	2.9
1	B	555	GLU	2.8
1	A	813	LEU	2.8
1	A	692	TRP	2.8
1	A	808	LYS	2.8
1	A	812	VAL	2.8
1	A	655	ALA	2.7
1	A	811	GLY	2.7
1	B	611	GLY	2.7
1	A	562	LEU	2.6
1	A	553	SER	2.6
1	A	693	VAL	2.6
1	B	620	ILE	2.5
1	B	693	VAL	2.5
1	A	810	GLY	2.4
1	A	704	ASN	2.4
1	B	692	TRP	2.3
1	B	792	THR	2.3
1	B	584	LYS	2.2
1	B	562	LEU	2.2
1	B	556	THR	2.2
1	B	733	ASN	2.2
1	A	584	LYS	2.2
1	A	561	ILE	2.1
1	B	638	ASN	2.1
1	B	691	SER	2.1
1	A	719	GLU	2.1
1	A	664	VAL	2.1
1	B	757	ILE	2.1
1	B	655	ALA	2.0
1	B	561	ILE	2.0
1	B	810	GLY	2.0

6.2 Non-standard residues in protein, DNA, RNA chains [i](#)

In the following table, the Atoms column lists the number of modelled atoms in the group and the number defined in the chemical component dictionary. LLDF column lists the quality of electron density of the group with respect to its neighbouring residues in protein, DNA or RNA chains. The B-factors column lists the minimum, median, 95th percentile and maximum values of B factors of atoms in the group. The column labelled 'Q< 0.9' lists the number of atoms with occupancy less than 0.9.

Mol	Type	Chain	Res	Atoms	RSCC	RSR	LLDF	B-factors(Å ²)	Q<0.9
1	PHD	B	766	12/13	0.83	0.19	-	26,34,40,42	2
1	PHD	A	766	12/13	0.91	0.13	-	20,26,34,35	1

6.3 Carbohydrates [i](#)

There are no carbohydrates in this entry.

6.4 Ligands [i](#)

In the following table, the Atoms column lists the number of modelled atoms in the group and the number defined in the chemical component dictionary. LLDF column lists the quality of electron density of the group with respect to its neighbouring residues in protein, DNA or RNA chains. The B-factors column lists the minimum, median, 95th percentile and maximum values of B factors of atoms in the group. The column labelled 'Q< 0.9' lists the number of atoms with occupancy less than 0.9.

Mol	Type	Chain	Res	Atoms	RSCC	RSR	LLDF	B-factors(Å ²)	Q<0.9
5	PGE	B	905	10/10	0.78	0.21	0.01	69,71,73,74	0
3	ADN	B	902	19/19	0.90	0.15	-0.07	33,38,59,59	0
3	ADN	A	1002	19/19	0.93	0.12	-0.18	28,34,55,56	0
4	PO4	A	1004	5/5	0.95	0.12	-0.33	40,43,47,49	0
4	PO4	B	904	5/5	0.98	0.10	-0.93	37,39,41,41	0
2	ZN	B	901	1/1	0.99	0.06	-1.20	31,31,31,31	0
2	ZN	A	1001	1/1	0.98	0.07	-1.49	30,30,30,30	0
4	PO4	B	903	5/5	0.96	0.14	-	48,51,58,60	0
4	PO4	A	1003	5/5	0.98	0.11	-	39,40,43,46	0

6.5 Other polymers [i](#)

There are no such residues in this entry.