



# Full wwPDB X-ray Structure Validation Report ⓘ

Feb 1, 2016 – 07:10 AM GMT

PDB ID : 2ZU8  
Title : Crystal structure of mannosyl-3-phosphoglycerate synthase from *Pyrococcus horikoshii*  
Authors : Kawamura, T.; Watanabe, N.; Tanaka, I.  
Deposited on : 2008-10-14  
Resolution : 2.40 Å(reported)

This is a Full wwPDB X-ray Structure Validation Report for a publicly released PDB entry.  
We welcome your comments at [validation@mail.wwpdb.org](mailto:validation@mail.wwpdb.org)  
A user guide is available at  
<http://wwpdb.org/validation/2016/XrayValidationReportHelp>  
with specific help available everywhere you see the ⓘ symbol.

---

The following versions of software and data (see [references ⓘ](#)) were used in the production of this report:

MolProbity : 4.02b-467  
Mogul : 1.7 (RC4), CSD as536be (2015)  
Xtriage (Phenix) : 1.9-1692  
EDS : rb-20026688  
Percentile statistics : 20151230.v01 (using entries in the PDB archive December 30th 2015)  
Refmac : 5.8.0135  
CCP4 : 6.5.0  
Ideal geometry (proteins) : Engh & Huber (2001)  
Ideal geometry (DNA, RNA) : Parkinson et al. (1996)  
Validation Pipeline (wwPDB-VP) : trunk26865

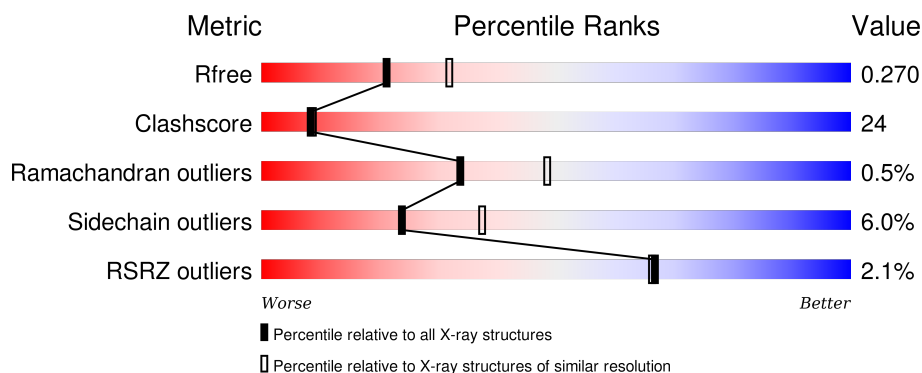
# 1 Overall quality at a glance

The following experimental techniques were used to determine the structure:

## *X-RAY DIFFRACTION*

The reported resolution of this entry is 2.40 Å.

Percentile scores (ranging between 0-100) for global validation metrics of the entry are shown in the following graphic. The table shows the number of entries on which the scores are based.



Metric	Whole archive (#Entries)	Similar resolution (#Entries, resolution range(Å))
$R_{free}$	91344	2919 (2.40-2.40)
Clashscore	102246	3407 (2.40-2.40)
Ramachandran outliers	100387	3351 (2.40-2.40)
Sidechain outliers	100360	3352 (2.40-2.40)
RSRZ outliers	91569	2928 (2.40-2.40)

The table below summarises the geometric issues observed across the polymeric chains and their fit to the electron density. The red, orange, yellow and green segments on the lower bar indicate the fraction of residues that contain outliers for  $\geq 3$ , 2, 1 and 0 types of geometric quality criteria. A grey segment represents the fraction of residues that are not modelled. The numeric value for each fraction is indicated below the corresponding segment, with a dot representing fractions  $\leq 5\%$ . The upper red bar (where present) indicates the fraction of residues that have poor fit to the electron density. The numeric value is given above the bar.

Mol	Chain	Length	Quality of chain
1	A	394	<div> <div>2%</div> <div>59%</div> <div>31%</div> <div>• • 5%</div> </div>
1	B	394	<div> <div>2%</div> <div>58%</div> <div>32%</div> <div>• 6%</div> </div>

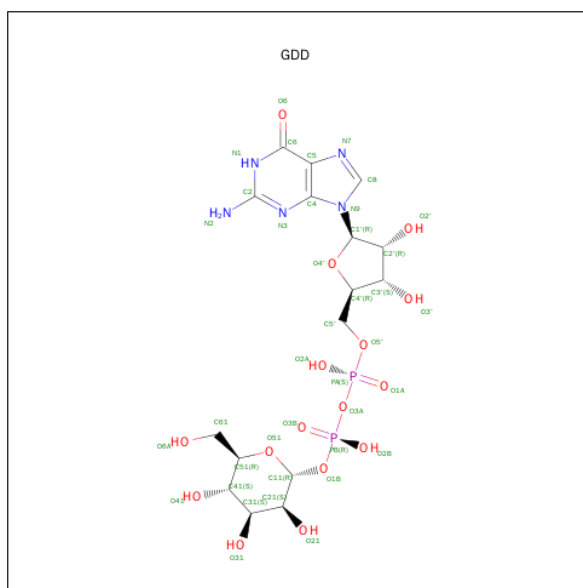


In the tables below, the ZeroOcc column contains the number of atoms modelled with zero occupancy, the AltConf column contains the number of residues with at least one atom in alternate conformation and the Trace column contains the number of residues modelled with at most 2 atoms.

- Molecule 1 is a protein called Mannosyl-3-phosphoglycerate synthase.

Mol	Chain	Residues	Atoms						ZeroOcc	AltConf	Trace
1	A	373	Total 3003	C 1944	N 496	O 547	S 1	Se 15	0	0	0
1	B	369	Total 2969	C 1916	N 491	O 546	S 1	Se 15	0	0	0

- Molecule 2 is GUANOSINE-5'-DIPHOSPHATE-ALPHA-D-MANNOSE (three-letter code: GDD) (formula:  $\text{C}_{16}\text{H}_{25}\text{N}_5\text{O}_{16}\text{P}_2$ ).

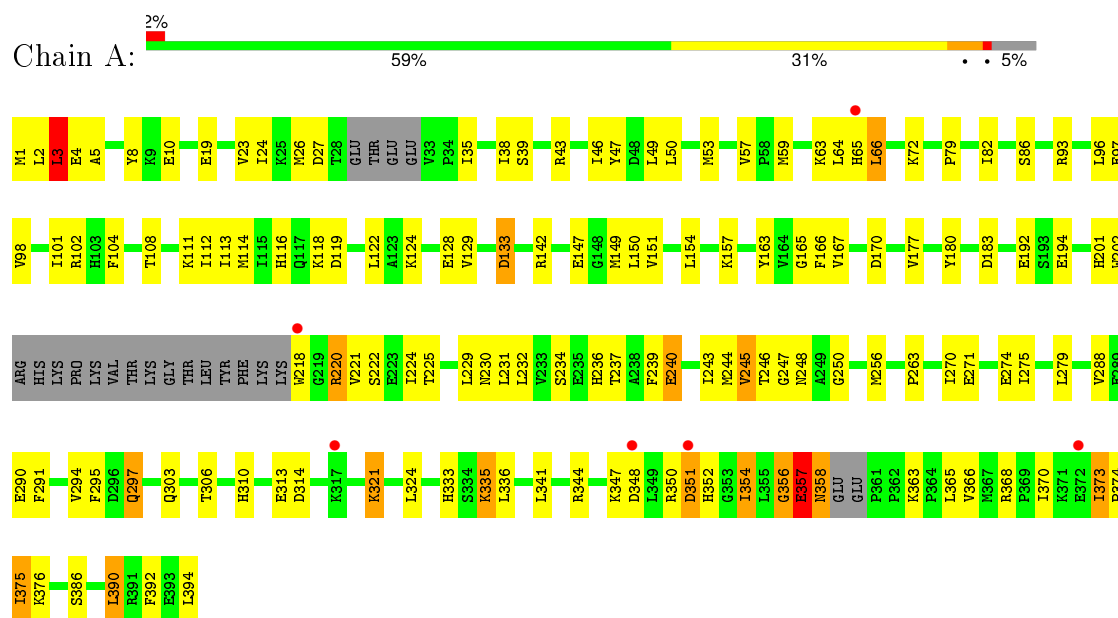


Mol	Chain	Residues	Atoms					ZeroOcc	AltConf
2	B	1	Total 39	C 16	N 5	O 16	P 2	0	0
2	A	1	Total 39	C 16	N 5	O 16	P 2	0	0

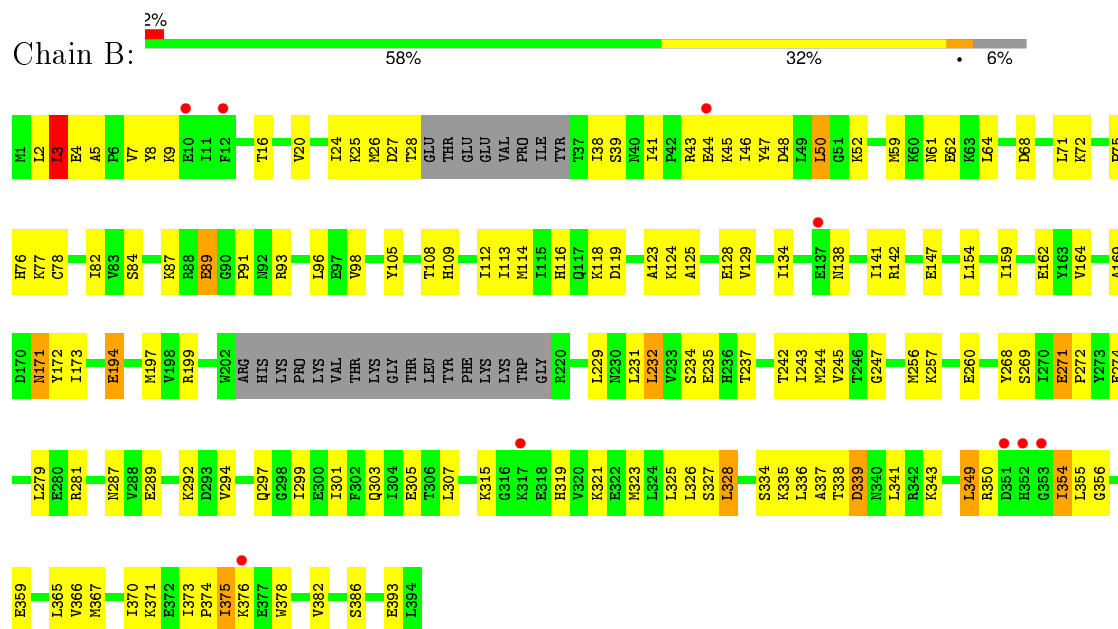
### 3 Residue-property plots

These plots are drawn for all protein, RNA and DNA chains in the entry. The first graphic for a chain summarises the proportions of errors displayed in the second graphic. The second graphic shows the sequence view annotated by issues in geometry and electron density. Residues are color-coded according to the number of geometric quality criteria for which they contain at least one outlier: green = 0, yellow = 1, orange = 2 and red = 3 or more. A red dot above a residue indicates a poor fit to the electron density ( $RSRZ > 2$ ). Stretches of 2 or more consecutive residues without any outlier are shown as a green connector. Residues present in the sample, but not in the model, are shown in grey.

#### • Molecule 1: Mannosyl-3-phosphoglycerate synthase



#### • Molecule 1: Mannosyl-3-phosphoglycerate synthase



## 4 Data and refinement statistics

Property	Value	Source
Space group	P 1 21 1	Depositor
Cell constants a, b, c, $\alpha$ , $\beta$ , $\gamma$	54.24Å 84.99Å 83.59Å 90.00° 101.91° 90.00°	Depositor
Resolution (Å)	42.72 – 2.40 42.72 – 2.41	Depositor EDS
% Data completeness (in resolution range)	95.3 (42.72-2.40) 95.4 (42.72-2.41)	Depositor EDS
$R_{merge}$	(Not available)	Depositor
$R_{sym}$	0.13	Depositor
$\langle I/\sigma(I) \rangle$ <sup>1</sup>	9.90 (at 2.39Å)	Xtriage
Refinement program	CNS 1.1	Depositor
R, $R_{free}$	0.226 , 0.272 0.226 , 0.270	Depositor DCC
$R_{free}$ test set	1401 reflections (5.07%)	DCC
Wilson B-factor (Å <sup>2</sup> )	26.9	Xtriage
Anisotropy	0.951	Xtriage
Bulk solvent $k_{sol}$ (e/Å <sup>3</sup> ), $B_{sol}$ (Å <sup>2</sup> )	0.32 , 41.6	EDS
Estimated twinning fraction	No twinning to report.	Xtriage
L-test for twinning <sup>2</sup>	$\langle  L  \rangle = 0.49$ , $\langle L^2 \rangle = 0.32$	Xtriage
Outliers	0 of 27650 reflections	Xtriage
$F_o, F_c$ correlation	0.92	EDS
Total number of atoms	6050	wwPDB-VP
Average B, all atoms (Å <sup>2</sup> )	31.0	wwPDB-VP

Xtriage's analysis on translational NCS is as follows: *The largest off-origin peak in the Patterson function is 5.66% of the height of the origin peak. No significant pseudotranslation is detected.*

<sup>1</sup>Intensities estimated from amplitudes.

<sup>2</sup>Theoretical values of  $\langle |L| \rangle$ ,  $\langle L^2 \rangle$  for acentric reflections are 0.5, 0.375 respectively for untwinned datasets, and 0.333, 0.2 for perfectly twinned datasets.

## 5 Model quality

### 5.1 Standard geometry

Bond lengths and bond angles in the following residue types are not validated in this section: GDD

The Z score for a bond length (or angle) is the number of standard deviations the observed value is removed from the expected value. A bond length (or angle) with  $|Z| > 5$  is considered an outlier worth inspection. RMSZ is the root-mean-square of all Z scores of the bond lengths (or angles).

Mol	Chain	Bond lengths		Bond angles	
		RMSZ	$\# Z  > 5$	RMSZ	$\# Z  > 5$
1	A	0.59	0/3054	0.86	5/4099 (0.1%)
1	B	0.55	0/3017	0.79	1/4048 (0.0%)
All	All	0.57	0/6071	0.83	6/8147 (0.1%)

Chiral center outliers are detected by calculating the chiral volume of a chiral center and verifying if the center is modelled as a planar moiety or with the opposite hand. A planarity outlier is detected by checking planarity of atoms in a peptide group, atoms in a mainchain group or atoms of a sidechain that are expected to be planar.

Mol	Chain	#Chirality outliers	#Planarity outliers
1	A	0	1

There are no bond length outliers.

All (6) bond angle outliers are listed below:

Mol	Chain	Res	Type	Atoms	Z	Observed(°)	Ideal(°)
1	A	373	ILE	N-CA-C	-6.28	94.05	111.00
1	A	357	GLU	CA-C-N	-6.20	103.57	117.20
1	A	3	LEU	CA-CB-CG	5.98	129.05	115.30
1	A	26	MSE	N-CA-C	5.78	126.61	111.00
1	B	3	LEU	CA-CB-CG	5.23	127.33	115.30
1	A	358	ASN	N-CA-C	-5.20	96.95	111.00

There are no chirality outliers.

All (1) planarity outliers are listed below:

Mol	Chain	Res	Type	Group
1	A	356	GLY	Mainchain

## 5.2 Too-close contacts ⓘ

In the following table, the Non-H and H(model) columns list the number of non-hydrogen atoms and hydrogen atoms in the chain respectively. The H(added) column lists the number of hydrogen atoms added and optimized by MolProbity. The Clashes column lists the number of clashes within the asymmetric unit, whereas Symm-Clashes lists symmetry related clashes.

Mol	Chain	Non-H	H(model)	H(added)	Clashes	Symm-Clashes
1	A	3003	0	3052	141	0
1	B	2969	0	3015	158	0
2	A	39	0	23	0	0
2	B	39	0	23	3	0
All	All	6050	0	6113	294	0

The all-atom clashscore is defined as the number of clashes found per 1000 atoms (including hydrogen atoms). The all-atom clashscore for this structure is 24.

All (294) close contacts within the same asymmetric unit are listed below, sorted by their clash magnitude.

Atom-1	Atom-2	Interatomic distance (Å)	Clash overlap (Å)
1:A:350:ARG:HH11	1:A:357:GLU:HG3	1.14	1.12
1:B:197:MSE:HE3	1:B:199:ARG:HD2	1.27	1.12
1:B:147:GLU:HG3	1:B:367:MSE:HE1	1.23	1.10
1:B:323:MSE:HE1	2:B:395:GDD:H31	1.30	1.08
1:A:102:ARG:HH21	1:A:390:LEU:HD21	1.20	1.06
1:B:26:MSE:HE3	1:B:307:LEU:HD23	1.39	1.03
1:B:52:LYS:HD3	1:B:162:GLU:OE1	1.55	1.03
1:B:349:LEU:O	1:B:354:ILE:HG23	1.62	0.99
1:A:24:ILE:O	1:B:72:LYS:HG2	1.64	0.97
1:A:350:ARG:NH1	1:A:357:GLU:HG3	1.78	0.96
1:B:142:ARG:HH12	1:B:367:MSE:HE2	1.32	0.94
1:B:61:ASN:HD21	1:B:87:LYS:H	1.13	0.94
1:A:104:PHE:O	1:A:108:THR:HG22	1.69	0.92
1:A:221:VAL:HG22	1:A:324:LEU:HD13	1.50	0.91
1:A:350:ARG:NH1	1:A:357:GLU:HA	1.86	0.89
1:B:194:GLU:HG2	1:B:257:LYS:HD2	1.54	0.88
1:A:119:ASP:OD2	1:A:386:SER:HB2	1.74	0.88
1:A:1:MSE:HE2	1:A:3:LEU:HD11	1.55	0.85
1:B:142:ARG:NH1	1:B:367:MSE:HE2	1.93	0.83
1:A:245:VAL:H	1:A:303:GLN:HE22	1.22	0.83
1:A:116:HIS:HD2	1:A:118:LYS:H	1.27	0.83
1:B:256:MSE:HE3	1:B:256:MSE:O	1.78	0.82
1:B:171:ASN:HD22	1:B:173:ILE:H	1.28	0.81

*Continued on next page...*

*Continued from previous page...*

Atom-1	Atom-2	Interatomic distance (Å)	Clash overlap (Å)
1:A:244:MSE:HE3	1:A:247:GLY:N	1.96	0.81
1:A:232:LEU:HG	1:A:336:LEU:HD22	1.63	0.80
1:A:113:ILE:HG13	1:A:394:LEU:HD23	1.63	0.80
1:A:321:LYS:HB2	1:A:354:ILE:HD13	1.63	0.79
1:A:49:LEU:HD11	1:A:163:TYR:CE2	2.18	0.79
1:B:256:MSE:HE2	1:B:260:GLU:HB3	1.63	0.79
1:A:350:ARG:CZ	1:A:357:GLU:HA	2.13	0.78
1:B:197:MSE:CE	1:B:199:ARG:HD2	2.12	0.78
1:B:271:GLU:HG2	1:B:272:PRO:HD3	1.63	0.78
1:A:244:MSE:HE2	1:A:275:ILE:HG13	1.64	0.77
1:A:324:LEU:HD23	1:A:354:ILE:HD11	1.64	0.77
1:A:237:THR:HG22	1:A:239:PHE:HB2	1.65	0.77
1:B:321:LYS:HG2	1:B:354:ILE:HD13	1.66	0.77
1:A:1:MSE:HE3	1:A:23:VAL:HG22	1.67	0.77
1:B:105:TYR:HE1	1:B:393:GLU:OE2	1.66	0.77
1:B:323:MSE:HE1	2:B:395:GDD:C31	2.13	0.76
1:A:116:HIS:CD2	1:A:118:LYS:H	2.03	0.76
1:A:244:MSE:HE3	1:A:247:GLY:HA2	1.67	0.76
1:B:105:TYR:CE1	1:B:393:GLU:OE2	2.38	0.76
1:A:347:LYS:HE2	1:A:351:ASP:OD2	1.85	0.76
1:A:244:MSE:HE3	1:A:247:GLY:CA	2.15	0.75
1:A:86:SER:O	1:A:116:HIS:HE1	1.68	0.74
1:A:194:GLU:HB2	1:A:297:GLN:HE21	1.52	0.74
1:B:5:ALA:HA	1:B:39:SER:OG	1.88	0.73
1:B:2:LEU:HD13	1:B:28:THR:HG21	1.70	0.73
1:B:2:LEU:HB2	1:B:25:LYS:HB3	1.70	0.72
1:A:220:ARG:HE	1:A:220:ARG:HA	1.54	0.72
1:A:218:TRP:CZ2	1:A:224:ILE:HD11	2.24	0.72
1:A:63:LYS:HE3	1:A:313:GLU:OE2	1.90	0.71
1:A:102:ARG:NH2	1:A:390:LEU:HD21	2.02	0.71
1:B:171:ASN:ND2	1:B:173:ILE:H	1.87	0.71
1:B:147:GLU:CG	1:B:367:MSE:HE1	2.12	0.71
1:A:1:MSE:CE	1:A:23:VAL:HG22	2.22	0.70
1:B:116:HIS:HD2	1:B:118:LYS:H	1.40	0.69
1:A:356:GLY:O	1:A:357:GLU:HB2	1.92	0.69
1:B:365:LEU:HD12	1:B:366:VAL:N	2.07	0.69
1:A:47:TYR:CE1	1:B:43:ARG:NH2	2.61	0.69
1:B:116:HIS:CD2	1:B:118:LYS:H	2.11	0.69
1:A:230:ASN:HD21	1:A:244:MSE:H	1.40	0.68
1:B:68:ASP:CG	1:B:72:LYS:HE3	2.13	0.68
1:B:315:LYS:HB2	1:B:319:HIS:CD2	2.27	0.68

*Continued on next page...*



*Continued from previous page...*

Atom-1	Atom-2	Interatomic distance (Å)	Clash overlap (Å)
1:B:375:ILE:HG23	1:B:376:LYS:N	2.08	0.68
1:B:9:LYS:HD2	1:B:16:THR:CG2	2.25	0.67
1:B:197:MSE:HE2	1:B:301:ILE:HG12	1.77	0.67
1:B:268:TYR:HB2	1:B:326:LEU:HD11	1.77	0.67
1:B:24:ILE:HD12	1:B:38:ILE:CD1	2.25	0.66
1:A:244:MSE:CE	1:A:247:GLY:HA2	2.26	0.66
1:B:142:ARG:NH1	1:B:367:MSE:CE	2.58	0.66
1:A:244:MSE:CE	1:A:275:ILE:HG13	2.25	0.66
1:A:234:SER:CB	1:A:240:GLU:HA	2.26	0.66
1:B:235:GLU:HG2	1:B:338:THR:HG21	1.77	0.65
1:B:61:ASN:HD22	1:B:93:ARG:HG2	1.61	0.64
1:B:62:GLU:OE1	1:B:62:GLU:HA	1.97	0.64
1:B:229:LEU:HD12	1:B:247:GLY:HA3	1.78	0.64
1:B:50:LEU:CD2	1:B:78:CYS:SG	2.84	0.64
1:B:194:GLU:HB2	1:B:297:GLN:HE22	1.61	0.64
1:A:236:HIS:HE1	1:A:336:LEU:O	1.81	0.63
1:A:234:SER:HB3	1:A:240:GLU:HA	1.81	0.63
1:A:245:VAL:H	1:A:303:GLN:NE2	1.95	0.63
1:B:321:LYS:CG	1:B:354:ILE:HD13	2.29	0.62
1:B:82:ILE:HD12	1:B:112:ILE:HD11	1.81	0.62
1:A:218:TRP:CH2	1:A:348:ASP:O	2.53	0.62
1:B:125:ALA:O	1:B:129:VAL:HG22	2.00	0.62
1:A:225:THR:OG1	1:A:248:ASN:ND2	2.32	0.62
1:A:66:LEU:HD23	1:A:170:ASP:HA	1.81	0.62
1:A:324:LEU:HD23	1:A:354:ILE:CD1	2.29	0.62
1:B:375:ILE:HG23	1:B:376:LYS:H	1.65	0.61
1:A:53:MSE:HE2	1:A:165:GLY:HA3	1.82	0.61
1:A:49:LEU:HD12	1:A:49:LEU:O	1.99	0.61
1:A:98:VAL:HA	1:A:114:MSE:HE1	1.82	0.61
1:B:44:GLU:O	1:B:48:ASP:HB2	1.99	0.61
1:B:289:GLU:HA	1:B:292:LYS:HZ3	1.66	0.61
1:A:218:TRP:CZ2	1:A:224:ILE:CD1	2.83	0.61
1:B:229:LEU:CD1	1:B:247:GLY:HA3	2.31	0.61
1:A:1:MSE:HE2	1:A:3:LEU:CD1	2.28	0.60
1:A:375:ILE:HG23	1:A:376:LYS:N	2.16	0.60
1:B:325:LEU:HB2	1:B:354:ILE:HD11	1.84	0.60
1:B:61:ASN:ND2	1:B:87:LYS:H	1.93	0.60
1:A:4:GLU:HG2	1:A:24:ILE:HD11	1.83	0.60
1:A:237:THR:CG2	1:A:239:PHE:HB2	2.32	0.60
1:B:50:LEU:CD2	1:B:77:LYS:HG3	2.32	0.60
1:B:26:MSE:O	1:B:26:MSE:HG2	2.02	0.60

*Continued on next page...*

*Continued from previous page...*

Atom-1	Atom-2	Interatomic distance (Å)	Clash overlap (Å)
1:B:52:LYS:CD	1:B:162:GLU:OE1	2.41	0.59
1:B:337:ALA:HA	1:B:341:LEU:HD23	1.84	0.59
1:A:1:MSE:CE	1:A:3:LEU:HD11	2.31	0.59
1:A:231:LEU:HD23	1:A:341:LEU:CD1	2.33	0.59
1:B:142:ARG:HH12	1:B:367:MSE:CE	2.10	0.59
1:B:27:ASP:OD1	1:B:43:ARG:NH2	2.36	0.58
1:A:288:VAL:HG13	1:A:295:PHE:CD2	2.38	0.58
1:A:375:ILE:CG2	1:A:376:LYS:N	2.67	0.58
1:A:290:GLU:HG2	1:A:291:PHE:CD2	2.39	0.58
1:B:294:VAL:HG13	1:B:299:ILE:HD11	1.84	0.58
1:A:221:VAL:O	1:A:224:ILE:HG22	2.04	0.57
1:A:65:HIS:CE1	1:A:66:LEU:HD12	2.39	0.57
1:A:243:ILE:HG23	1:A:244:MSE:N	2.20	0.57
1:A:43:ARG:NH2	1:B:47:TYR:CE2	2.73	0.57
1:A:365:LEU:HD23	1:A:366:VAL:N	2.20	0.57
1:B:68:ASP:OD2	1:B:72:LYS:HE3	2.05	0.56
1:B:194:GLU:HG2	1:B:257:LYS:CD	2.29	0.56
1:B:194:GLU:H	1:B:297:GLN:NE2	2.04	0.56
1:A:35:ILE:HB	1:A:38:ILE:HB	1.87	0.56
1:A:357:GLU:O	1:A:358:ASN:OD1	2.25	0.55
1:A:234:SER:HB2	1:A:239:PHE:O	2.05	0.55
1:A:245:VAL:O	1:A:245:VAL:CG1	2.54	0.55
1:B:98:VAL:HA	1:B:114:MSE:HE1	1.88	0.55
1:B:335:LYS:O	1:B:335:LYS:HG2	2.05	0.55
1:B:334:SER:C	1:B:336:LEU:H	2.09	0.55
1:A:150:LEU:HD23	1:A:150:LEU:O	2.07	0.54
1:B:232:LEU:HD23	1:B:341:LEU:CD2	2.36	0.54
1:B:245:VAL:H	1:B:303:GLN:HE22	1.55	0.54
1:B:269:SER:HB3	1:B:326:LEU:HD13	1.90	0.54
1:B:328:LEU:HD23	1:B:349:LEU:HD13	1.90	0.54
1:A:2:LEU:C	1:A:3:LEU:HD22	2.28	0.54
1:B:82:ILE:CD1	1:B:112:ILE:HD11	2.37	0.54
1:B:50:LEU:HD21	1:B:78:CYS:SG	2.47	0.54
1:A:250:GLY:HA2	1:A:271:GLU:OE2	2.07	0.54
1:A:157:LYS:HA	1:A:256:MSE:HE3	1.89	0.54
1:B:61:ASN:HD21	1:B:87:LYS:N	1.94	0.53
1:B:147:GLU:HG3	1:B:367:MSE:CE	2.16	0.53
1:A:116:HIS:HD2	1:A:118:LYS:N	2.02	0.53
1:B:378:TRP:O	1:B:382:VAL:HG23	2.08	0.53
1:B:24:ILE:CD1	1:B:38:ILE:CD1	2.86	0.53
1:A:194:GLU:HB2	1:A:297:GLN:NE2	2.23	0.52

*Continued on next page...*

*Continued from previous page...*

Atom-1	Atom-2	Interatomic distance (Å)	Clash overlap (Å)
1:A:231:LEU:HD23	1:A:341:LEU:HD12	1.91	0.52
1:B:269:SER:N	1:B:326:LEU:HD13	2.23	0.52
1:A:244:MSE:HE3	1:A:246:THR:C	2.30	0.52
1:A:72:LYS:HG2	1:B:24:ILE:O	2.10	0.52
1:A:201:HIS:ND1	1:A:245:VAL:HG13	2.25	0.52
1:B:197:MSE:HE3	1:B:199:ARG:CD	2.19	0.52
1:B:339:ASP:OD1	1:B:343:LYS:HE3	2.10	0.52
1:A:5:ALA:HA	1:A:39:SER:OG	2.10	0.52
1:A:27:ASP:O	1:B:76:HIS:HB2	2.10	0.51
1:B:119:ASP:CG	1:B:386:SER:OG	2.49	0.51
1:A:133:ASP:OD1	1:A:368:ARG:NH1	2.41	0.51
1:B:197:MSE:HE2	1:B:301:ILE:CG1	2.41	0.51
1:B:50:LEU:HD22	1:B:77:LYS:HG3	1.91	0.51
1:A:150:LEU:HD23	1:A:150:LEU:C	2.30	0.51
1:B:235:GLU:HG2	1:B:338:THR:CG2	2.39	0.51
1:A:149:MSE:HE3	1:A:166:PHE:CG	2.46	0.51
1:A:46:ILE:O	1:A:50:LEU:HG	2.11	0.51
1:A:93:ARG:HG3	1:A:96:LEU:HD12	1.93	0.51
1:A:333:HIS:CG	1:A:363:LYS:HG2	2.45	0.51
1:B:271:GLU:HA	1:B:274:GLU:OE1	2.11	0.51
1:B:256:MSE:CE	1:B:260:GLU:HB3	2.39	0.50
1:A:237:THR:CG2	1:A:237:THR:O	2.60	0.50
1:A:234:SER:HB2	1:A:240:GLU:HA	1.94	0.50
1:B:41:ILE:HD12	1:B:41:ILE:N	2.26	0.50
1:A:8:TYR:HD2	1:A:19:GLU:HB2	1.75	0.50
1:A:237:THR:HG22	1:A:237:THR:O	2.11	0.50
1:B:123:ALA:HB2	1:B:141:ILE:HD12	1.93	0.50
1:B:323:MSE:CE	2:B:395:GDD:H31	2.22	0.50
1:B:108:THR:O	1:B:109:HIS:HB2	2.11	0.50
1:A:57:VAL:HG22	1:A:167:VAL:HG22	1.94	0.50
1:A:350:ARG:C	1:A:352:HIS:N	2.64	0.50
1:A:245:VAL:HG13	1:A:245:VAL:O	2.11	0.50
1:B:234:SER:HA	1:B:237:THR:OG1	2.12	0.49
1:A:394:LEU:OXT	1:A:394:LEU:HG	2.12	0.49
1:B:2:LEU:C	1:B:3:LEU:HD22	2.32	0.49
1:B:294:VAL:CG1	1:B:299:ILE:HD11	2.42	0.49
1:A:1:MSE:HE1	1:A:183:ASP:OD1	2.12	0.49
1:A:350:ARG:O	1:A:352:HIS:N	2.45	0.49
1:B:234:SER:O	1:B:237:THR:O	2.29	0.49
1:A:183:ASP:OD2	1:A:306:THR:HG22	2.12	0.48
1:A:348:ASP:O	1:A:352:HIS:CD2	2.66	0.48

*Continued on next page...*

*Continued from previous page...*

Atom-1	Atom-2	Interatomic distance (Å)	Clash overlap (Å)
1:B:41:ILE:HG22	1:B:46:ILE:HG13	1.95	0.48
1:B:271:GLU:N	1:B:272:PRO:CD	2.76	0.48
1:B:45:LYS:O	1:B:48:ASP:HB3	2.13	0.48
1:B:269:SER:O	1:B:272:PRO:HD2	2.14	0.48
1:A:53:MSE:HE2	1:A:165:GLY:CA	2.44	0.48
1:A:290:GLU:HG2	1:A:291:PHE:CE2	2.49	0.48
1:A:97:GLU:O	1:A:101:ILE:HG12	2.12	0.48
1:A:221:VAL:HA	1:A:224:ILE:HG22	1.95	0.48
1:B:197:MSE:CE	1:B:301:ILE:HG23	2.44	0.48
1:B:375:ILE:CG2	1:B:376:LYS:N	2.77	0.48
1:B:350:ARG:HG2	1:B:356:GLY:O	2.14	0.47
1:A:59:MSE:HE3	1:A:82:ILE:HG23	1.96	0.47
1:B:373:ILE:HA	1:B:374:PRO:HD3	1.68	0.47
1:B:50:LEU:HD23	1:B:78:CYS:SG	2.54	0.47
1:B:260:GLU:O	1:B:371:LYS:HB2	2.13	0.47
1:B:231:LEU:HD23	1:B:341:LEU:CD1	2.45	0.47
1:A:129:VAL:HG13	1:A:374:PRO:HD2	1.97	0.47
1:B:281:ARG:NH1	1:B:287:ASN:HB3	2.30	0.47
1:A:270:ILE:O	1:A:274:GLU:HG3	2.14	0.47
1:A:348:ASP:O	1:A:352:HIS:HD2	1.98	0.47
1:A:201:HIS:CE1	1:A:245:VAL:HG13	2.49	0.47
1:B:50:LEU:HD23	1:B:77:LYS:HG3	1.96	0.47
1:A:202:TRP:CG	1:A:310:HIS:HB2	2.50	0.46
1:B:61:ASN:ND2	1:B:93:ARG:HG2	2.28	0.46
1:A:270:ILE:HG23	1:A:271:GLU:N	2.30	0.46
1:A:133:ASP:OD2	1:A:133:ASP:N	2.48	0.46
1:B:281:ARG:HH12	1:B:287:ASN:HB3	1.79	0.46
1:B:59:MSE:O	1:B:84:SER:HA	2.16	0.46
1:B:26:MSE:HE3	1:B:307:LEU:CD2	2.26	0.46
1:B:124:LYS:O	1:B:128:GLU:HG2	2.14	0.46
1:B:256:MSE:CE	1:B:256:MSE:O	2.55	0.46
1:B:8:TYR:O	1:B:9:LYS:HB3	2.16	0.46
1:B:171:ASN:HD22	1:B:172:TYR:N	2.13	0.46
1:B:50:LEU:HD21	1:B:75:PRO:HG2	1.98	0.46
1:B:59:MSE:HB2	1:B:59:MSE:HE3	1.82	0.46
1:A:224:ILE:HD13	1:A:324:LEU:HD11	1.98	0.46
1:A:350:ARG:O	1:A:352:HIS:O	2.34	0.46
1:B:5:ALA:O	1:B:7:VAL:HG23	2.15	0.46
1:B:289:GLU:HG3	1:B:292:LYS:NZ	2.30	0.46
1:B:24:ILE:HD12	1:B:38:ILE:HD11	1.95	0.45
1:A:124:LYS:O	1:A:128:GLU:HB2	2.15	0.45

*Continued on next page...*

*Continued from previous page...*

Atom-1	Atom-2	Interatomic distance (Å)	Clash overlap (Å)
1:B:349:LEU:HA	1:B:349:LEU:HD12	1.72	0.45
1:A:63:LYS:CE	1:A:313:GLU:OE2	2.62	0.45
1:B:87:LYS:O	1:B:93:ARG:HB3	2.16	0.45
1:B:3:LEU:HD23	1:B:41:ILE:HD13	1.99	0.45
1:B:371:LYS:O	1:B:371:LYS:HD2	2.16	0.45
1:B:118:LYS:NZ	1:B:141:ILE:O	2.43	0.45
1:B:334:SER:C	1:B:336:LEU:N	2.70	0.45
1:A:8:TYR:CD2	1:A:19:GLU:HB2	2.51	0.45
1:A:111:LYS:C	1:A:112:ILE:HG13	2.37	0.45
1:B:47:TYR:O	1:B:77:LYS:HD2	2.17	0.44
1:A:350:ARG:C	1:A:352:HIS:H	2.19	0.44
1:A:3:LEU:HD13	1:A:23:VAL:HA	2.00	0.44
1:A:220:ARG:HG3	1:A:222:SER:H	1.82	0.44
1:B:68:ASP:OD2	1:B:72:LYS:CE	2.66	0.44
1:A:104:PHE:CZ	1:A:108:THR:HG21	2.52	0.44
1:B:76:HIS:HE1	1:B:108:THR:O	2.01	0.44
1:A:218:TRP:HZ2	1:A:348:ASP:OD1	2.01	0.44
1:A:53:MSE:O	1:A:79:PRO:HD2	2.16	0.44
1:A:225:THR:O	1:A:229:LEU:HG	2.18	0.43
1:A:221:VAL:C	1:A:224:ILE:HG22	2.39	0.43
1:B:245:VAL:H	1:B:303:GLN:NE2	2.16	0.43
1:B:154:LEU:HD21	1:B:370:ILE:HB	2.00	0.43
1:B:197:MSE:HE2	1:B:301:ILE:HG23	1.99	0.43
1:A:234:SER:CB	1:A:239:PHE:O	2.66	0.43
1:B:105:TYR:CE1	1:B:109:HIS:HA	2.53	0.43
1:A:201:HIS:ND1	1:A:245:VAL:CG1	2.82	0.43
1:B:335:LYS:HE2	1:B:335:LYS:HB3	1.62	0.43
1:B:356:GLY:HA3	1:B:359:GLU:HB2	2.01	0.43
1:A:335:LYS:HZ2	1:A:335:LYS:HG2	1.56	0.43
1:B:3:LEU:O	1:B:38:ILE:HD12	2.19	0.43
1:A:129:VAL:HG11	1:A:373:ILE:HG23	2.01	0.43
1:A:154:LEU:HD21	1:A:370:ILE:HB	2.01	0.43
1:A:147:GLU:OE1	1:A:147:GLU:N	2.51	0.42
1:B:4:GLU:HG2	1:B:24:ILE:HD11	2.00	0.42
1:A:390:LEU:HD12	1:A:392:PHE:CE2	2.54	0.42
1:B:350:ARG:HG3	1:B:355:LEU:HB3	2.00	0.42
1:B:113:ILE:HD11	1:B:159:ILE:HG21	2.02	0.42
1:A:218:TRP:CE2	1:A:224:ILE:HD12	2.55	0.42
1:B:354:ILE:O	1:B:354:ILE:HG13	2.20	0.42
1:A:129:VAL:CG1	1:A:374:PRO:HD2	2.50	0.42
1:B:3:LEU:HD22	1:B:3:LEU:N	2.35	0.42

*Continued on next page...*

*Continued from previous page...*

Atom-1	Atom-2	Interatomic distance (Å)	Clash overlap (Å)
1:A:291:PHE:HB3	1:A:294:VAL:HB	2.02	0.42
1:B:370:ILE:HD12	1:B:370:ILE:C	2.40	0.42
1:A:177:VAL:HA	1:A:180:TYR:CD2	2.54	0.42
1:B:9:LYS:HD2	1:B:16:THR:HG21	2.01	0.42
1:B:243:ILE:HG23	1:B:244:MSE:N	2.35	0.42
1:B:105:TYR:CZ	1:B:393:GLU:OE2	2.73	0.41
1:B:9:LYS:HD2	1:B:16:THR:HG23	2.01	0.41
1:B:89:GLU:OE1	1:B:89:GLU:C	2.59	0.41
1:B:7:VAL:HG12	1:B:8:TYR:CE1	2.55	0.41
1:B:27:ASP:C	1:B:27:ASP:OD1	2.58	0.41
1:A:129:VAL:O	1:A:129:VAL:HG12	2.19	0.41
1:A:1:MSE:HE2	1:A:3:LEU:HD21	2.03	0.41
1:A:220:ARG:HA	1:A:220:ARG:NE	2.30	0.41
1:B:199:ARG:HH22	1:B:271:GLU:HB2	1.86	0.41
1:B:68:ASP:OD2	1:B:72:LYS:NZ	2.53	0.41
1:B:20:VAL:HA	1:B:303:GLN:O	2.20	0.41
1:A:263:PRO:O	1:A:263:PRO:HG2	2.21	0.41
1:B:62:GLU:HG3	1:B:169:ALA:HB3	2.02	0.41
1:B:119:ASP:OD2	1:B:386:SER:OG	2.39	0.41
1:B:134:ILE:HA	1:B:367:MSE:HE2	2.02	0.40
1:A:122:LEU:HD21	1:A:151:VAL:HG11	2.02	0.40
1:B:197:MSE:HE2	1:B:301:ILE:CG2	2.52	0.40
1:A:142:ARG:HH11	1:A:142:ARG:HD2	1.75	0.40
1:B:87:LYS:O	1:B:93:ARG:CB	2.69	0.40
1:A:122:LEU:HD12	1:A:122:LEU:HA	1.98	0.40

There are no symmetry-related clashes.

## 5.3 Torsion angles

### 5.3.1 Protein backbone

In the following table, the Percentiles column shows the percent Ramachandran outliers of the chain as a percentile score with respect to all X-ray entries followed by that with respect to entries of similar resolution.

The Analysed column shows the number of residues for which the backbone conformation was analysed, and the total number of residues.

Mol	Chain	Analysed	Favoured	Allowed	Outliers	Percentiles	
1	A	365/394 (93%)	348 (95%)	14 (4%)	3 (1%)	24	35

*Continued on next page...*

*Continued from previous page...*

Mol	Chain	Analysed	Favoured	Allowed	Outliers	Percentiles	
1	B	363/394 (92%)	337 (93%)	25 (7%)	1 (0%)	46	63
All	All	728/788 (92%)	685 (94%)	39 (5%)	4 (0%)	34	48

All (4) Ramachandran outliers are listed below:

Mol	Chain	Res	Type
1	A	357	GLU
1	B	375	ILE
1	A	351	ASP
1	A	375	ILE

### 5.3.2 Protein sidechains ⓘ

In the following table, the Percentiles column shows the percent sidechain outliers of the chain as a percentile score with respect to all X-ray entries followed by that with respect to entries of similar resolution.

The Analysed column shows the number of residues for which the sidechain conformation was analysed, and the total number of residues.

Mol	Chain	Analysed	Rotameric	Outliers	Percentiles	
1	A	329/334 (98%)	311 (94%)	18 (6%)	27	42
1	B	326/334 (98%)	305 (94%)	21 (6%)	22	34
All	All	655/668 (98%)	616 (94%)	39 (6%)	24	37

All (39) residues with a non-rotameric sidechain are listed below:

Mol	Chain	Res	Type
1	A	3	LEU
1	A	10	GLU
1	A	64	LEU
1	A	66	LEU
1	A	133	ASP
1	A	192	GLU
1	A	220	ARG
1	A	240	GLU
1	A	245	VAL
1	A	279	LEU
1	A	297	GLN
1	A	314	ASP

*Continued on next page...*

*Continued from previous page...*

Mol	Chain	Res	Type
1	A	321	LYS
1	A	335	LYS
1	A	344	ARG
1	A	354	ILE
1	A	357	GLU
1	A	390	LEU
1	B	3	LEU
1	B	50	LEU
1	B	64	LEU
1	B	71	LEU
1	B	89	GLU
1	B	91	PRO
1	B	96	LEU
1	B	138	ASN
1	B	164	VAL
1	B	171	ASN
1	B	194	GLU
1	B	232	LEU
1	B	242	THR
1	B	271	GLU
1	B	279	LEU
1	B	305	GLU
1	B	327	SER
1	B	328	LEU
1	B	339	ASP
1	B	349	LEU
1	B	354	ILE

Some sidechains can be flipped to improve hydrogen bonding and reduce clashes. All (20) such sidechains are listed below:

Mol	Chain	Res	Type
1	A	18	HIS
1	A	65	HIS
1	A	116	HIS
1	A	230	ASN
1	A	236	HIS
1	A	248	ASN
1	A	287	ASN
1	A	297	GLN
1	A	303	GLN
1	A	352	HIS
1	B	21	GLN

*Continued on next page...*



*Continued from previous page...*

Mol	Chain	Res	Type
1	B	61	ASN
1	B	76	HIS
1	B	116	HIS
1	B	171	ASN
1	B	252	HIS
1	B	297	GLN
1	B	303	GLN
1	B	319	HIS
1	B	333	HIS

### 5.3.3 RNA [i](#)

There are no RNA molecules in this entry.

## 5.4 Non-standard residues in protein, DNA, RNA chains [i](#)

There are no non-standard protein/DNA/RNA residues in this entry.

## 5.5 Carbohydrates [i](#)

There are no carbohydrates in this entry.

## 5.6 Ligand geometry [i](#)

2 ligands are modelled in this entry.

In the following table, the Counts columns list the number of bonds (or angles) for which Mogul statistics could be retrieved, the number of bonds (or angles) that are observed in the model and the number of bonds (or angles) that are defined in the chemical component dictionary. The Link column lists molecule types, if any, to which the group is linked. The Z score for a bond length (or angle) is the number of standard deviations the observed value is removed from the expected value. A bond length (or angle) with  $|Z| > 2$  is considered an outlier worth inspection. RMSZ is the root-mean-square of all Z scores of the bond lengths (or angles).

Mol	Type	Chain	Res	Link	Bond lengths			Bond angles		
					Counts	RMSZ	$\# Z  > 2$	Counts	RMSZ	$\# Z  > 2$
2	GDD	A	395	-	34,42,42	1.16	3 (8%)	47,65,65	1.56	9 (19%)
2	GDD	B	395	-	34,42,42	1.11	3 (8%)	47,65,65	1.42	7 (14%)

In the following table, the Chirals column lists the number of chiral outliers, the number of chiral

centers analysed, the number of these observed in the model and the number defined in the chemical component dictionary. Similar counts are reported in the Torsion and Rings columns. '-' means no outliers of that kind were identified.

Mol	Type	Chain	Res	Link	Chirals	Torsions	Rings
2	GDD	A	395	-	-	0/19/59/59	0/4/4/4
2	GDD	B	395	-	-	0/19/59/59	0/4/4/4

All (6) bond length outliers are listed below:

Mol	Chain	Res	Type	Atoms	Z	Observed(Å)	Ideal(Å)
2	A	395	GDD	O4'-C1'	2.34	1.44	1.41
2	A	395	GDD	C2-N1	2.48	1.39	1.35
2	B	395	GDD	O4'-C1'	2.53	1.44	1.41
2	B	395	GDD	C2-N1	2.88	1.40	1.35
2	B	395	GDD	C6-N1	3.84	1.40	1.33
2	A	395	GDD	C6-N1	4.30	1.41	1.33

All (16) bond angle outliers are listed below:

Mol	Chain	Res	Type	Atoms	Z	Observed(°)	Ideal(°)
2	A	395	GDD	N3-C2-N1	-4.98	119.86	127.44
2	B	395	GDD	N3-C2-N1	-4.63	120.40	127.44
2	B	395	GDD	PB-O3A-PA	-3.84	121.94	132.73
2	A	395	GDD	C5-C6-N1	-3.72	118.50	123.59
2	A	395	GDD	O3A-PA-O5'	-3.45	93.78	102.94
2	B	395	GDD	C5-C6-N1	-3.42	118.91	123.59
2	A	395	GDD	PB-O3A-PA	-2.97	124.40	132.73
2	B	395	GDD	C2'-C1'-N9	-2.79	110.03	114.29
2	A	395	GDD	C4-C5-N7	-2.41	107.26	109.48
2	B	395	GDD	C4-C5-N7	-2.34	107.33	109.48
2	A	395	GDD	N2-C2-N1	2.06	120.61	117.20
2	A	395	GDD	O2A-PA-O1A	2.21	124.53	112.53
2	B	395	GDD	O4'-C1'-N9	2.22	112.74	108.10
2	B	395	GDD	C6-N1-C2	2.24	119.05	115.94
2	A	395	GDD	O4'-C1'-N9	2.32	112.95	108.10
2	A	395	GDD	C6-N1-C2	2.49	119.40	115.94

There are no chirality outliers.

There are no torsion outliers.

There are no ring outliers.

1 monomer is involved in 3 short contacts:

Mol	Chain	Res	Type	Clashes	Symm-Clashes
2	B	395	GDD	3	0

## 5.7 Other polymers [i](#)

There are no such residues in this entry.

## 5.8 Polymer linkage issues [i](#)

There are no chain breaks in this entry.

## 6 Fit of model and data [i](#)

### 6.1 Protein, DNA and RNA chains [i](#)

In the following table, the column labelled ‘#RSRZ> 2’ contains the number (and percentage) of RSRZ outliers, followed by percent RSRZ outliers for the chain as percentile scores relative to all X-ray entries and entries of similar resolution. The OWAB column contains the minimum, median, 95<sup>th</sup> percentile and maximum values of the occupancy-weighted average B-factor per residue. The column labelled ‘Q< 0.9’ lists the number of (and percentage) of residues with an average occupancy less than 0.9.

Mol	Chain	Analysed	<RSRZ>	#RSRZ>2	OWAB(Å <sup>2</sup> )	Q<0.9
1	A	358/394 (90%)	-0.01	6 (1%) 73 72	12, 27, 45, 67	0
1	B	354/394 (89%)	-0.00	9 (2%) 61 60	15, 30, 49, 59	0
All	All	712/788 (90%)	-0.01	15 (2%) 67 66	12, 29, 48, 67	0

All (15) RSRZ outliers are listed below:

Mol	Chain	Res	Type	RSRZ
1	A	348	ASP	3.5
1	B	44	GLU	3.3
1	A	317	LYS	3.1
1	B	351	ASP	2.7
1	B	352	HIS	2.7
1	A	218	TRP	2.7
1	B	12	PHE	2.5
1	B	317	LYS	2.5
1	B	376	LYS	2.5
1	A	351	ASP	2.5
1	A	372	GLU	2.4
1	A	65	HIS	2.4
1	B	353	GLY	2.3
1	B	137	GLU	2.2
1	B	10	GLU	2.1

### 6.2 Non-standard residues in protein, DNA, RNA chains [i](#)

There are no non-standard protein/DNA/RNA residues in this entry.

### 6.3 Carbohydrates [i](#)

There are no carbohydrates in this entry.

## 6.4 Ligands [i](#)

In the following table, the Atoms column lists the number of modelled atoms in the group and the number defined in the chemical component dictionary. LLDF column lists the quality of electron density of the group with respect to its neighbouring residues in protein, DNA or RNA chains. The B-factors column lists the minimum, median, 95<sup>th</sup> percentile and maximum values of B factors of atoms in the group. The column labelled 'Q< 0.9' lists the number of atoms with occupancy less than 0.9.

Mol	Type	Chain	Res	Atoms	RSCC	RSR	LLDF	B-factors( $\text{\AA}^2$ )	Q<0.9
2	GDD	A	395	39/39	0.95	0.13	-0.21	19,25,29,31	0
2	GDD	B	395	39/39	0.96	0.12	-0.54	19,25,31,33	0

## 6.5 Other polymers [i](#)

There are no such residues in this entry.