



wwPDB X-ray Structure Validation Summary Report ⓘ

Feb 1, 2016 – 02:33 PM GMT

PDB ID : 3ZUM
Title : PHOTOSYNTHETIC REACTION CENTRE MUTANT WITH PHE L146 REPLACED WITH ALA
Authors : Gibasiewicz, K.; Pajzderska, M.; Potter, J.A.; Fyfe, P.K.; Dobek, A.; Brettel, K.; Jones, M.R.
Deposited on : 2011-07-19
Resolution : 2.50 Å(reported)

This is a wwPDB X-ray Structure Validation Summary Report for a publicly released PDB entry.
We welcome your comments at validation@mail.wwpdb.org
A user guide is available at
<http://wwpdb.org/validation/2016/XrayValidationReportHelp>
with specific help available everywhere you see the ⓘ symbol.

The following versions of software and data (see [references ⓘ](#)) were used in the production of this report:

MolProbity : 4.02b-467
Mogul : 1.7 (RC4), CSD as536be (2015)
Xtriage (Phenix) : 1.9-1692
EDS : rb-20026688
Percentile statistics : 20151230.v01 (using entries in the PDB archive December 30th 2015)
Refmac : 5.8.0135
CCP4 : 6.5.0
Ideal geometry (proteins) : Engh & Huber (2001)
Ideal geometry (DNA, RNA) : Parkinson et al. (1996)
Validation Pipeline (wwPDB-VP) : trunk26865

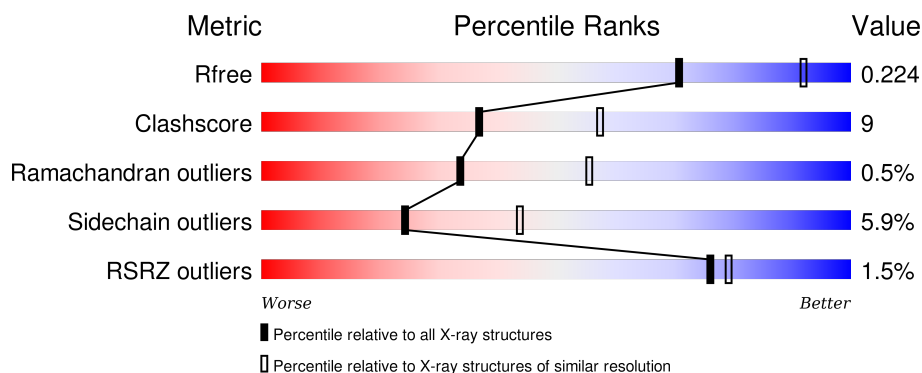
1 Overall quality at a glance ⓘ

The following experimental techniques were used to determine the structure:

X-RAY DIFFRACTION

The reported resolution of this entry is 2.50 Å.

Percentile scores (ranging between 0-100) for global validation metrics of the entry are shown in the following graphic. The table shows the number of entries on which the scores are based.



Metric	Whole archive (#Entries)	Similar resolution (#Entries, resolution range(Å))
R_{free}	91344	3553 (2.50-2.50)
Clashscore	102246	4242 (2.50-2.50)
Ramachandran outliers	100387	4156 (2.50-2.50)
Sidechain outliers	100360	4158 (2.50-2.50)
RSRZ outliers	91569	3562 (2.50-2.50)

The table below summarises the geometric issues observed across the polymeric chains and their fit to the electron density. The red, orange, yellow and green segments on the lower bar indicate the fraction of residues that contain outliers for ≥ 3 , 2, 1 and 0 types of geometric quality criteria. A grey segment represents the fraction of residues that are not modelled. The numeric value for each fraction is indicated below the corresponding segment, with a dot representing fractions $\leq 5\%$. The upper red bar (where present) indicates the fraction of residues that have poor fit to the electron density. The numeric value is given above the bar.

Mol	Chain	Length	Quality of chain
1	H	260	<div> <div>%</div> <div> <div></div> <div>76%</div> <div>12%</div> <div>•</div> <div>10%</div> </div> </div>
2	L	281	<div> <div>2%</div> <div> <div></div> <div>86%</div> <div>12%</div> <div>•</div> </div> </div>
3	M	307	<div> <div>%</div> <div> <div></div> <div>84%</div> <div>12%</div> <div>• •</div> </div> </div>

The following table lists non-polymeric compounds, carbohydrate monomers and non-standard residues in protein, DNA, RNA chains that are outliers for geometric or electron-density-fit criteria:

Mol	Type	Chain	Res	Chirality	Geometry	Clashes	Electron density
4	PO4	H	1246	-	-	-	X
5	LDA	L	701	-	-	-	X
5	LDA	L	703	-	-	-	X
5	LDA	L	704	-	-	-	X
7	BPH	L	1284	X	-	-	-
7	BPH	M	1305	X	-	-	-
8	U10	L	1285	-	-	-	X

2 Entry composition

There are 11 unique types of molecules in this entry. The entry contains 7265 atoms, of which 0 are hydrogens and 0 are deuteriums.

In the tables below, the ZeroOcc column contains the number of atoms modelled with zero occupancy, the AltConf column contains the number of residues with at least one atom in alternate conformation and the Trace column contains the number of residues modelled with at most 2 atoms.

- Molecule 1 is a protein called REACTION CENTER PROTEIN H CHAIN.

Mol	Chain	Residues	Atoms					ZeroOcc	AltConf	Trace
1	H	235	Total	C	N	O	S	0	0	0
			1787	1143	304	331	9			

- Molecule 2 is a protein called REACTION CENTER PROTEIN L CHAIN.

Mol	Chain	Residues	Atoms					ZeroOcc	AltConf	Trace
2	L	281	Total	C	N	O	S	0	0	0
			2226	1501	355	362	8			

There is a discrepancy between the modelled and reference sequences:

Chain	Residue	Modelled	Actual	Comment	Reference
L	146	ALA	PHE	ENGINEERED MUTATION	UNP P0C0Y8

- Molecule 3 is a protein called REACTION CENTER PROTEIN M CHAIN.

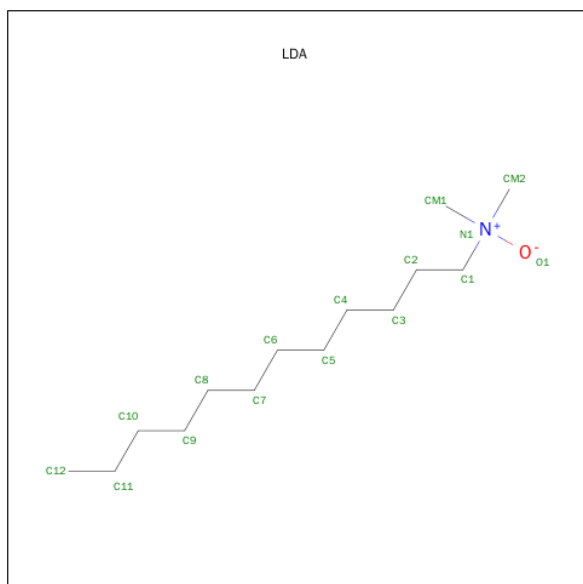
Mol	Chain	Residues	Atoms					ZeroOcc	AltConf	Trace
3	M	301	Total	C	N	O	S	0	0	0
			2404	1605	393	396	10			

- Molecule 4 is PHOSPHATE ION (three-letter code: PO4) (formula: O₄P).



Mol	Chain	Residues	Atoms			ZeroOcc	AltConf
4	H	1	Total	O	P	0	0
			5	4	1		
4	M	1	Total	O	P	0	0
			5	4	1		

- Molecule 5 is LAURYL DIMETHYLAMINE-N-OXIDE (three-letter code: LDA) (formula: $C_{14}H_{31}NO$).



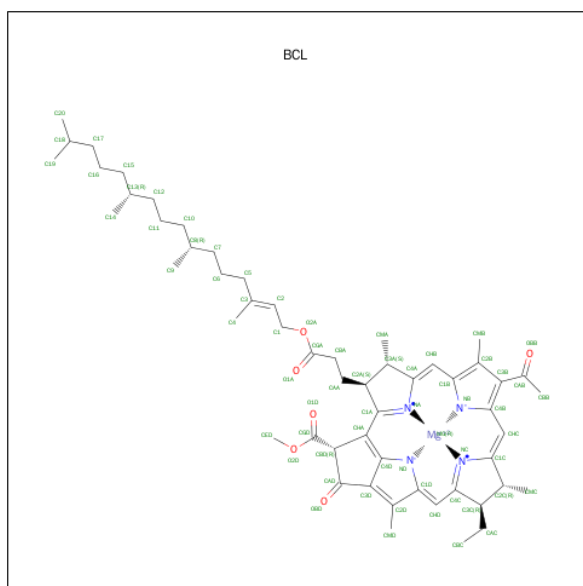
Mol	Chain	Residues	Atoms				ZeroOcc	AltConf
5	L	1	Total	C	N	O	0	0
			16	14	1	1		

Continued on next page...

Continued from previous page...

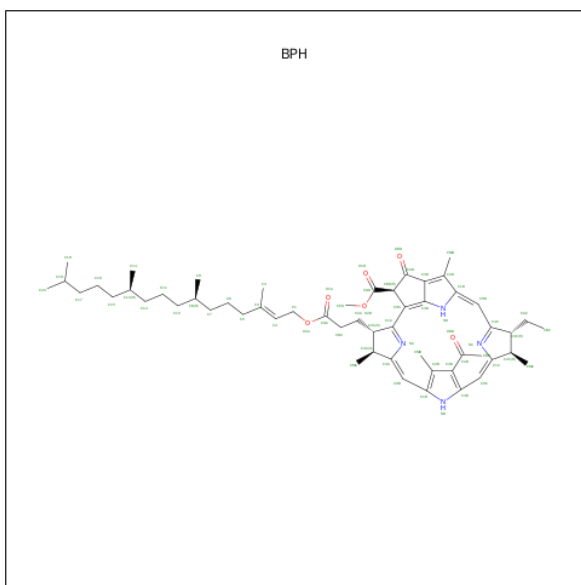
Mol	Chain	Residues	Atoms				ZeroOcc	AltConf
5	L	1	Total	C	N	O	0	0
			16	14	1	1		
5	L	1	Total	C	N	O	0	0
			16	14	1	1		
5	L	1	Total	C	N	O	0	0
			16	14	1	1		
5	L	1	Total	C	N	O	0	0
			16	14	1	1		
5	L	1	Total	C			0	0
			11	11				
5	L	1	Total	C			0	0
			7	7				

- Molecule 6 is BACTERIOCHLOROPHYLL A (three-letter code: BCL) (formula: $C_{55}H_{74}MgN_4O_6$).



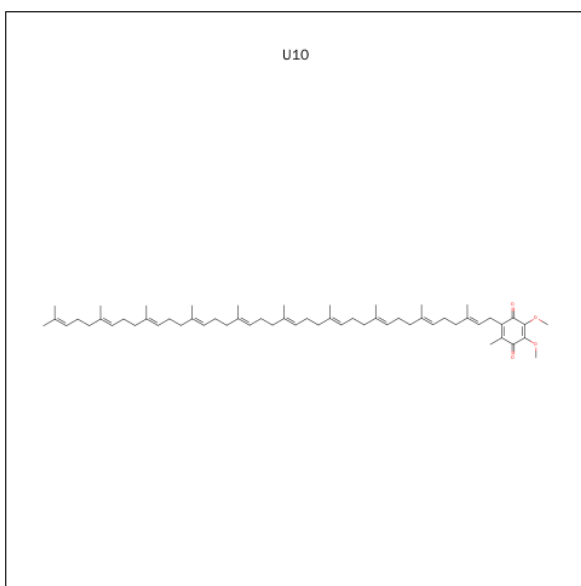
Mol	Chain	Residues	Atoms					ZeroOcc	AltConf
6	L	1	Total 66	C 55	Mg 1	N 4	O 6	0	0
6	L	1	Total 66	C 55	Mg 1	N 4	O 6	0	0
6	M	1	Total 66	C 55	Mg 1	N 4	O 6	0	0
6	M	1	Total 66	C 55	Mg 1	N 4	O 6	0	0

- Molecule 7 is BACTERIOPHEOPHYTIN A (three-letter code: BPH) (formula: $C_{55}H_{76}N_4O_6$).



Mol	Chain	Residues	Atoms				ZeroOcc	AltConf
7	L	1	Total	C	N	O	0	0
			65	55	4	6		
7	M	1	Total	C	N	O	0	0
			65	55	4	6		

- Molecule 8 is UBIQUINONE-10 (three-letter code: U10) (formula: $C_{59}H_{90}O_4$).

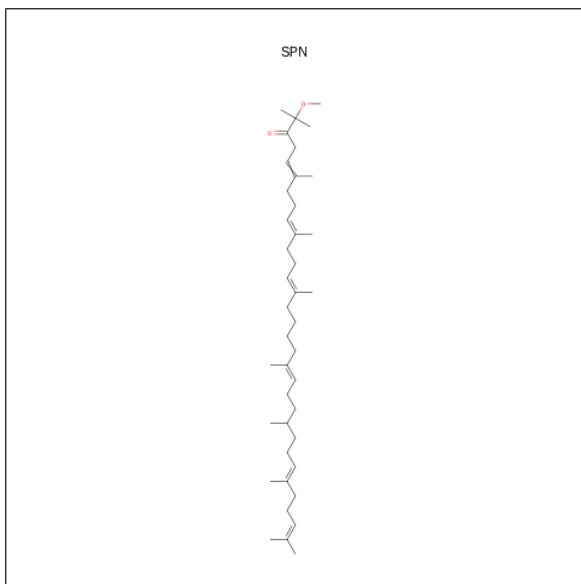


Mol	Chain	Residues	Atoms			ZeroOcc	AltConf
8	L	1	Total	C	O	0	0
			48	44	4		
8	M	1	Total	C	O	0	0
			48	44	4		

- Molecule 9 is FE (III) ION (three-letter code: FE) (formula: Fe).

Mol	Chain	Residues	Atoms		ZeroOcc	AltConf
9	M	1	Total	Fe	0	0
			1	1		

- Molecule 10 is SPEROIDENONE (three-letter code: SPN) (formula: C₄₁H₇₀O₂).



Mol	Chain	Residues	Atoms			ZeroOcc	AltConf
10	M	1	Total	C	O	0	0
			43	41	2		

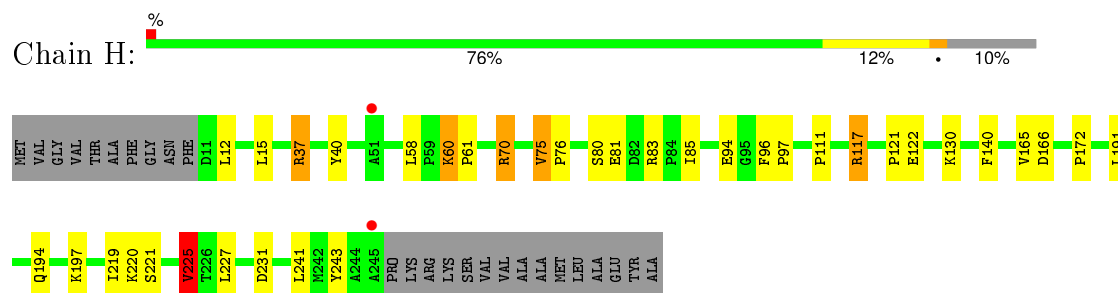
- Molecule 11 is water.

Mol	Chain	Residues	Atoms		ZeroOcc	AltConf
11	H	109	Total	O	0	0
			109	109		
11	L	49	Total	O	0	0
			49	49		
11	M	48	Total	O	0	0
			48	48		

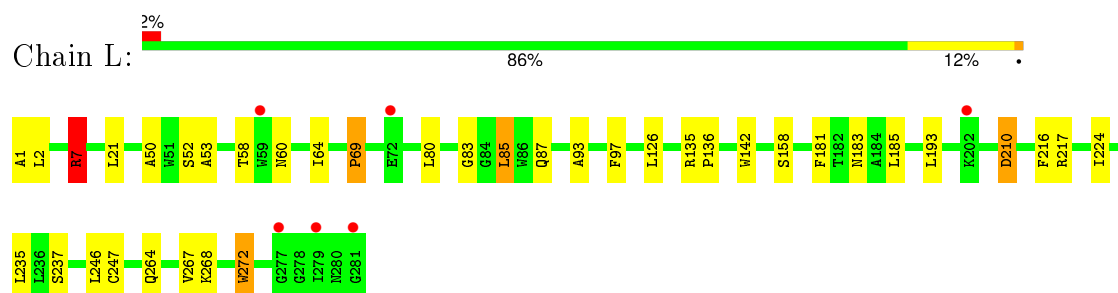
3 Residue-property plots [i](#)

These plots are drawn for all protein, RNA and DNA chains in the entry. The first graphic for a chain summarises the proportions of errors displayed in the second graphic. The second graphic shows the sequence view annotated by issues in geometry and electron density. Residues are color-coded according to the number of geometric quality criteria for which they contain at least one outlier: green = 0, yellow = 1, orange = 2 and red = 3 or more. A red dot above a residue indicates a poor fit to the electron density ($\text{RSRZ} > 2$). Stretches of 2 or more consecutive residues without any outlier are shown as a green connector. Residues present in the sample, but not in the model, are shown in grey.

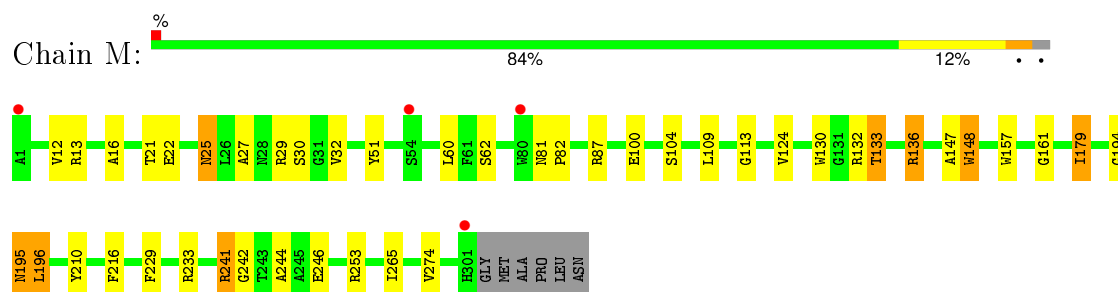
• Molecule 1: REACTION CENTER PROTEIN H CHAIN



• Molecule 2: REACTION CENTER PROTEIN L CHAIN



• Molecule 3: REACTION CENTER PROTEIN M CHAIN



4 Data and refinement statistics

Property	Value	Source
Space group	P 31 2 1	Depositor
Cell constants a, b, c, α , β , γ	139.46Å 139.46Å 185.01Å 90.00° 90.00° 120.00°	Depositor
Resolution (Å)	119.52 – 2.50 15.00 – 2.50	Depositor EDS
% Data completeness (in resolution range)	99.1 (119.52-2.50) 99.4 (15.00-2.50)	Depositor EDS
R_{merge}	0.08	Depositor
R_{sym}	(Not available)	Depositor
$\langle I/\sigma(I) \rangle$ ¹	2.38 (at 2.51Å)	Xtriage
Refinement program	REFMAC 5.5.0109	Depositor
R, R_{free}	0.195 , 0.228 0.192 , 0.224	Depositor DCC
R_{free} test set	3528 reflections (5.20%)	DCC
Wilson B-factor (Å ²)	50.6	Xtriage
Anisotropy	0.000	Xtriage
Bulk solvent k_{sol} (e/Å ³), B_{sol} (Å ²)	0.35 , 54.4	EDS
Estimated twinning fraction	0.018 for -h,-k,l	Xtriage
L-test for twinning ²	$\langle L \rangle = 0.50$, $\langle L^2 \rangle = 0.33$	Xtriage
Outliers	0 of 71438 reflections	Xtriage
F_o, F_c correlation	0.95	EDS
Total number of atoms	7265	wwPDB-VP
Average B, all atoms (Å ²)	49.0	wwPDB-VP

Xtriage's analysis on translational NCS is as follows: *The largest off-origin peak in the Patterson function is 2.72% of the height of the origin peak. No significant pseudotranslation is detected.*

¹Intensities estimated from amplitudes.

²Theoretical values of $\langle |L| \rangle$, $\langle L^2 \rangle$ for acentric reflections are 0.5, 0.375 respectively for untwinned datasets, and 0.333, 0.2 for perfectly twinned datasets.

5 Model quality

5.1 Standard geometry

Bond lengths and bond angles in the following residue types are not validated in this section: BCL, LDA, BPH, PO4, FE, SPN, U10

The Z score for a bond length (or angle) is the number of standard deviations the observed value is removed from the expected value. A bond length (or angle) with $|Z| > 5$ is considered an outlier worth inspection. RMSZ is the root-mean-square of all Z scores of the bond lengths (or angles).

Mol	Chain	Bond lengths		Bond angles	
		RMSZ	$\# Z > 5$	RMSZ	$\# Z > 5$
1	H	0.86	1/1834 (0.1%)	0.86	5/2497 (0.2%)
2	L	0.83	0/2313	0.79	4/3166 (0.1%)
3	M	0.80	0/2496	0.80	6/3408 (0.2%)
All	All	0.83	1/6643 (0.0%)	0.81	15/9071 (0.2%)

All (1) bond length outliers are listed below:

Mol	Chain	Res	Type	Atoms	Z	Observed(Å)	Ideal(Å)
1	H	94	GLU	CG-CD	5.37	1.59	1.51

The worst 5 of 15 bond angle outliers are listed below:

Mol	Chain	Res	Type	Atoms	Z	Observed(°)	Ideal(°)
3	M	241	ARG	NE-CZ-NH2	-9.62	115.49	120.30
3	M	241	ARG	NE-CZ-NH1	8.67	124.64	120.30
2	L	7	ARG	NE-CZ-NH2	-7.94	116.33	120.30
1	H	37	ARG	NE-CZ-NH2	-7.78	116.41	120.30
2	L	7	ARG	NE-CZ-NH1	7.56	124.08	120.30

There are no chirality outliers.

There are no planarity outliers.

5.2 Too-close contacts

In the following table, the Non-H and H(model) columns list the number of non-hydrogen atoms and hydrogen atoms in the chain respectively. The H(added) column lists the number of hydrogen atoms added and optimized by MolProbity. The Clashes column lists the number of clashes within the asymmetric unit, whereas Symm-Clashes lists symmetry related clashes.

Mol	Chain	Non-H	H(model)	H(added)	Clashes	Symm-Clashes
1	H	1787	0	1785	23	0
2	L	2226	0	2183	27	0
3	M	2404	0	2318	41	0
4	H	5	0	0	1	0
4	M	5	0	0	0	0
5	L	98	0	183	7	0
6	L	132	0	148	7	0
6	M	132	0	148	14	0
7	L	65	0	76	8	0
7	M	65	0	76	5	0
8	L	48	0	63	17	0
8	M	48	0	63	2	0
9	M	1	0	0	0	0
10	M	43	0	70	7	0
11	H	109	0	0	3	0
11	L	49	0	0	2	0
11	M	48	0	0	0	0
All	All	7265	0	7113	133	0

The all-atom clashscore is defined as the number of clashes found per 1000 atoms (including hydrogen atoms). The all-atom clashscore for this structure is 9.

The worst 5 of 133 close contacts within the same asymmetric unit are listed below, sorted by their clash magnitude.

Atom-1	Atom-2	Interatomic distance (Å)	Clash overlap (Å)
8:L:1285:U10:H303	8:L:1285:U10:C40	1.66	1.24
5:L:702:LDA:HM21	11:L:2048:HOH:O	1.38	1.21
5:L:701:LDA:H91	5:L:702:LDA:H121	1.22	1.16
8:L:1285:U10:H303	8:L:1285:U10:H402	1.25	1.15
8:L:1285:U10:C40	8:L:1285:U10:C30	2.27	1.10

There are no symmetry-related clashes.

5.3 Torsion angles [i](#)

5.3.1 Protein backbone [i](#)

In the following table, the Percentiles column shows the percent Ramachandran outliers of the chain as a percentile score with respect to all X-ray entries followed by that with respect to entries of similar resolution.

The Analysed column shows the number of residues for which the backbone conformation was analysed, and the total number of residues.

Mol	Chain	Analysed	Favoured	Allowed	Outliers	Percentiles	
1	H	233/260 (90%)	224 (96%)	9 (4%)	0	100	100
2	L	279/281 (99%)	258 (92%)	19 (7%)	2 (1%)	26	46
3	M	299/307 (97%)	281 (94%)	16 (5%)	2 (1%)	26	46
All	All	811/848 (96%)	763 (94%)	44 (5%)	4 (0%)	34	55

All (4) Ramachandran outliers are listed below:

Mol	Chain	Res	Type
2	L	80	LEU
3	M	30	SER
3	M	195	ASN
2	L	69	PRO

5.3.2 Protein sidechains ⓘ

In the following table, the Percentiles column shows the percent sidechain outliers of the chain as a percentile score with respect to all X-ray entries followed by that with respect to entries of similar resolution.

The Analysed column shows the number of residues for which the sidechain conformation was analysed, and the total number of residues.

Mol	Chain	Analysed	Rotameric	Outliers	Percentiles	
1	H	190/208 (91%)	179 (94%)	11 (6%)	25	45
2	L	219/219 (100%)	206 (94%)	13 (6%)	24	44
3	M	236/240 (98%)	222 (94%)	14 (6%)	24	44
All	All	645/667 (97%)	607 (94%)	38 (6%)	24	44

5 of 38 residues with a non-rotameric sidechain are listed below:

Mol	Chain	Res	Type
2	L	185	LEU
2	L	247	CYS
3	M	216	PHE
2	L	216	PHE
2	L	267	VAL

Some sidechains can be flipped to improve hydrogen bonding and reduce clashes. All (2) such

sidechains are listed below:

Mol	Chain	Res	Type
2	L	183	ASN
3	M	25	ASN

5.3.3 RNA ⓘ

There are no RNA molecules in this entry.

5.4 Non-standard residues in protein, DNA, RNA chains ⓘ

There are no non-standard protein/DNA/RNA residues in this entry.

5.5 Carbohydrates ⓘ

There are no carbohydrates in this entry.

5.6 Ligand geometry ⓘ

Of 19 ligands modelled in this entry, 1 is monoatomic - leaving 18 for Mogul analysis.

In the following table, the Counts columns list the number of bonds (or angles) for which Mogul statistics could be retrieved, the number of bonds (or angles) that are observed in the model and the number of bonds (or angles) that are defined in the chemical component dictionary. The Link column lists molecule types, if any, to which the group is linked. The Z score for a bond length (or angle) is the number of standard deviations the observed value is removed from the expected value. A bond length (or angle) with $|Z| > 2$ is considered an outlier worth inspection. RMSZ is the root-mean-square of all Z scores of the bond lengths (or angles).

Mol	Type	Chain	Res	Link	Bond lengths			Bond angles		
					Counts	RMSZ	$\# Z > 2$	Counts	RMSZ	$\# Z > 2$
4	PO4	H	1246	-	4,4,4	0.43	0	6,6,6	0.30	0
6	BCL	L	1282	2	53,74,74	0.63	0	57,115,115	1.42	8 (14%)
6	BCL	L	1283	2	53,74,74	0.71	2 (3%)	57,115,115	2.04	14 (24%)
7	BPH	L	1284	-	64,70,70	1.43	8 (12%)	73,101,101	1.49	11 (15%)
8	U10	L	1285	-	48,48,63	3.05	12 (25%)	58,61,79	2.22	21 (36%)
5	LDA	L	701	-	15,15,15	4.05	1 (6%)	16,17,17	1.45	2 (12%)
5	LDA	L	702	-	15,15,15	3.65	2 (13%)	16,17,17	0.80	0
5	LDA	L	703	-	15,15,15	3.63	1 (6%)	16,17,17	0.66	0
5	LDA	L	704	-	15,15,15	3.69	2 (13%)	16,17,17	0.86	0

Mol	Type	Chain	Res	Link	Bond lengths			Bond angles		
					Counts	RMSZ	# Z > 2	Counts	RMSZ	# Z > 2
5	LDA	L	705	-	15,15,15	3.78	1 (6%)	16,17,17	0.95	1 (6%)
5	LDA	L	706	-	10,10,15	0.46	0	9,9,17	0.37	0
5	LDA	L	707	-	6,6,15	0.43	0	5,5,17	0.18	0
6	BCL	M	1302	3	53,74,74	0.71	0	57,115,115	1.50	10 (17%)
6	BCL	M	1303	3	53,74,74	0.62	0	57,115,115	1.61	9 (15%)
7	BPH	M	1305	-	64,70,70	1.35	7 (10%)	73,101,101	1.83	15 (20%)
4	PO4	M	1306	-	4,4,4	0.39	0	6,6,6	0.28	0
10	SPN	M	1307	-	41,42,42	0.66	0	41,52,52	1.86	12 (29%)
8	U10	M	1308	-	48,48,63	3.12	12 (25%)	58,61,79	2.02	14 (24%)

In the following table, the Chirals column lists the number of chiral outliers, the number of chiral centers analysed, the number of these observed in the model and the number defined in the chemical component dictionary. Similar counts are reported in the Torsion and Rings columns. '-' means no outliers of that kind were identified.

Mol	Type	Chain	Res	Link	Chirals	Torsions	Rings
4	PO4	H	1246	-	-	0/0/0/0	0/0/0/0
6	BCL	L	1282	2	-	0/37/137/137	0/0/9/9
6	BCL	L	1283	2	-	0/37/137/137	0/0/9/9
7	BPH	L	1284	-	2/2/18/22	0/54/105/105	0/1/6/6
8	U10	L	1285	-	-	0/45/69/87	0/1/1/1
5	LDA	L	701	-	-	0/13/13/13	0/0/0/0
5	LDA	L	702	-	-	0/13/13/13	0/0/0/0
5	LDA	L	703	-	-	0/13/13/13	0/0/0/0
5	LDA	L	704	-	-	0/13/13/13	0/0/0/0
5	LDA	L	705	-	-	0/13/13/13	0/0/0/0
5	LDA	L	706	-	-	0/8/8/13	0/0/0/0
5	LDA	L	707	-	-	0/4/4/13	0/0/0/0
6	BCL	M	1302	3	-	0/37/137/137	0/0/9/9
6	BCL	M	1303	3	-	0/37/137/137	0/0/9/9
7	BPH	M	1305	-	2/2/18/22	0/54/105/105	0/1/6/6
4	PO4	M	1306	-	-	0/0/0/0	0/0/0/0
10	SPN	M	1307	-	-	0/50/51/51	0/0/0/0
8	U10	M	1308	-	-	0/45/69/87	0/1/1/1

The worst 5 of 48 bond length outliers are listed below:

Mol	Chain	Res	Type	Atoms	Z	Observed(Å)	Ideal(Å)
5	L	701	LDA	O1-N1	-15.37	1.24	1.39
5	L	705	LDA	O1-N1	-14.42	1.25	1.39

Continued on next page...

Continued from previous page...

Mol	Chain	Res	Type	Atoms	Z	Observed(Å)	Ideal(Å)
5	L	704	LDA	O1-N1	-14.02	1.26	1.39
5	L	703	LDA	O1-N1	-13.91	1.26	1.39
5	L	702	LDA	O1-N1	-13.80	1.26	1.39

The worst 5 of 117 bond angle outliers are listed below:

Mol	Chain	Res	Type	Atoms	Z	Observed(°)	Ideal(°)
8	L	1285	U10	C7-C8-C9	-6.97	114.90	126.70
7	M	1305	BPH	C4-C3-C5	-5.61	106.83	115.41
8	M	1308	U10	C17-C18-C19	-5.60	115.58	127.76
8	L	1285	U10	C1M-C1-C6	-5.19	113.00	124.10
6	L	1283	BCL	O1D-CGD-CBD	-5.11	117.30	124.62

All (4) chirality outliers are listed below:

Mol	Chain	Res	Type	Atom
7	L	1284	BPH	C8
7	L	1284	BPH	C13
7	M	1305	BPH	C8
7	M	1305	BPH	C13

There are no torsion outliers.

There are no ring outliers.

13 monomers are involved in 65 short contacts:

Mol	Chain	Res	Type	Clashes	Symm-Clashes
4	H	1246	PO4	1	0
6	L	1282	BCL	4	0
6	L	1283	BCL	3	0
7	L	1284	BPH	8	0
8	L	1285	U10	17	0
5	L	701	LDA	3	0
5	L	702	LDA	6	0
5	L	704	LDA	1	0
6	M	1302	BCL	9	0
6	M	1303	BCL	5	0
7	M	1305	BPH	5	0
10	M	1307	SPN	7	0
8	M	1308	U10	2	0

5.7 Other polymers [i](#)

There are no such residues in this entry.

5.8 Polymer linkage issues [i](#)

There are no chain breaks in this entry.

6 Fit of model and data [i](#)

6.1 Protein, DNA and RNA chains [i](#)

In the following table, the column labelled ‘#RSRZ> 2’ contains the number (and percentage) of RSRZ outliers, followed by percent RSRZ outliers for the chain as percentile scores relative to all X-ray entries and entries of similar resolution. The OWAB column contains the minimum, median, 95th percentile and maximum values of the occupancy-weighted average B-factor per residue. The column labelled ‘Q< 0.9’ lists the number of (and percentage) of residues with an average occupancy less than 0.9.

Mol	Chain	Analysed	<RSRZ>	#RSRZ>2	OWAB(Å ²)	Q<0.9
1	H	235/260 (90%)	-0.53	2 (0%) 85 88	34, 44, 60, 69	0
2	L	281/281 (100%)	-0.48	6 (2%) 67 71	32, 45, 82, 101	0
3	M	301/307 (98%)	-0.57	4 (1%) 79 82	29, 46, 76, 83	0
All	All	817/848 (96%)	-0.53	12 (1%) 76 79	29, 45, 76, 101	0

The worst 5 of 12 RSRZ outliers are listed below:

Mol	Chain	Res	Type	RSRZ
3	M	1	ALA	7.9
2	L	281	GLY	5.7
2	L	59	TRP	5.2
1	H	245	ALA	4.4
2	L	202	LYS	2.9

6.2 Non-standard residues in protein, DNA, RNA chains [i](#)

There are no non-standard protein/DNA/RNA residues in this entry.

6.3 Carbohydrates [i](#)

There are no carbohydrates in this entry.

6.4 Ligands [i](#)

In the following table, the Atoms column lists the number of modelled atoms in the group and the number defined in the chemical component dictionary. LLDF column lists the quality of electron density of the group with respect to its neighbouring residues in protein, DNA or RNA chains. The B-factors column lists the minimum, median, 95th percentile and maximum values of B factors

of atoms in the group. The column labelled 'Q< 0.9' lists the number of atoms with occupancy less than 0.9.

Mol	Type	Chain	Res	Atoms	RSCC	RSR	LLDF	B-factors(\AA^2)	Q<0.9
8	U10	L	1285	48/63	0.60	0.41	16.78	17,49,60,62	48
4	PO4	H	1246	5/5	0.94	0.23	6.20	92,96,101,102	0
5	LDA	L	704	16/16	0.65	0.29	5.06	94,97,116,117	0
5	LDA	L	701	16/16	0.87	0.19	3.09	41,63,74,77	0
5	LDA	L	703	16/16	0.36	0.30	3.00	87,89,122,123	0
5	LDA	L	702	16/16	0.93	0.12	1.06	71,73,88,89	0
8	U10	M	1308	48/63	0.94	0.12	0.77	26,43,74,77	0
10	SPN	M	1307	43/43	0.93	0.13	0.69	33,53,79,83	0
7	BPH	M	1305	65/65	0.94	0.12	0.34	34,47,121,123	0
6	BCL	M	1302	66/66	0.97	0.10	0.28	28,38,81,82	0
7	BPH	L	1284	65/65	0.98	0.10	-0.06	16,34,54,60	0
6	BCL	L	1283	66/66	0.97	0.08	-0.55	14,30,66,73	0
6	BCL	M	1303	66/66	0.98	0.08	-0.57	30,40,59,70	0
6	BCL	L	1282	66/66	0.98	0.08	-0.83	29,40,48,50	0
9	FE	M	1304	1/1	1.00	0.04	-2.24	33,33,33,33	0
5	LDA	L	706	11/16	0.75	0.30	-	73,77,83,83	0
4	PO4	M	1306	5/5	0.97	0.24	-	73,78,80,81	0
5	LDA	L	707	7/16	0.67	0.23	-	75,81,81,82	0
5	LDA	L	705	16/16	0.68	0.31	-	100,104,109,110	0

6.5 Other polymers ⓘ

There are no such residues in this entry.