



wwPDB X-ray Structure Validation Summary Report ⓘ

Feb 1, 2016 – 02:36 PM GMT

PDB ID : 3ZZH
Title : Crystal structure of the amino acid kinase domain from *Saccharomyces cerevisiae* acetylglutamate kinase in complex with its feed-back inhibitor L-arginine
Authors : De Cima, S.; Gil-Ortiz, F.; Crabeel, M.; Fita, I.; Rubio, V.
Deposited on : 2011-09-01
Resolution : 2.10 Å(reported)

This is a wwPDB X-ray Structure Validation Summary Report for a publicly released PDB entry.
We welcome your comments at validation@mail.wwpdb.org
A user guide is available at
<http://wwpdb.org/validation/2016/XrayValidationReportHelp>
with specific help available everywhere you see the ⓘ symbol.

The following versions of software and data (see [references ⓘ](#)) were used in the production of this report:

MolProbity : 4.02b-467
Mogul : 1.7 (RC4), CSD as536be (2015)
Xtriage (Phenix) : 1.9-1692
EDS : rb-20026688
Percentile statistics : 20151230.v01 (using entries in the PDB archive December 30th 2015)
Refmac : 5.8.0135
CCP4 : 6.5.0
Ideal geometry (proteins) : Engh & Huber (2001)
Ideal geometry (DNA, RNA) : Parkinson et al. (1996)
Validation Pipeline (wwPDB-VP) : trunk26865

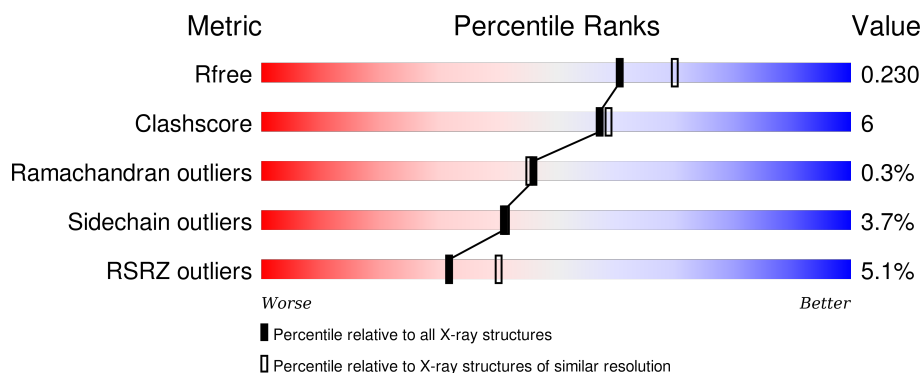
1 Overall quality at a glance ⓘ

The following experimental techniques were used to determine the structure:

X-RAY DIFFRACTION

The reported resolution of this entry is 2.10 Å.

Percentile scores (ranging between 0-100) for global validation metrics of the entry are shown in the following graphic. The table shows the number of entries on which the scores are based.



Metric	Whole archive (#Entries)	Similar resolution (#Entries, resolution range(Å))
R_{free}	91344	3939 (2.10-2.10)
Clashscore	102246	4460 (2.10-2.10)
Ramachandran outliers	100387	4413 (2.10-2.10)
Sidechain outliers	100360	4414 (2.10-2.10)
RSRZ outliers	91569	3948 (2.10-2.10)

The table below summarises the geometric issues observed across the polymeric chains and their fit to the electron density. The red, orange, yellow and green segments on the lower bar indicate the fraction of residues that contain outliers for ≥ 3 , 2, 1 and 0 types of geometric quality criteria. A grey segment represents the fraction of residues that are not modelled. The numeric value for each fraction is indicated below the corresponding segment, with a dot representing fractions $\leq 5\%$. The upper red bar (where present) indicates the fraction of residues that have poor fit to the electron density. The numeric value is given above the bar.

Mol	Chain	Length	Quality of chain
1	A	307	<div> <div>4%</div> <div>85%</div> <div>9%</div> <div>5%</div> </div>
1	B	307	<div> <div>2%</div> <div>85%</div> <div>7%</div> <div>6%</div> </div>
1	C	307	<div> <div>9%</div> <div>84%</div> <div>9%</div> <div>6%</div> </div>
1	D	307	<div> <div>5%</div> <div>82%</div> <div>11%</div> <div>6%</div> </div>

The following table lists non-polymeric compounds, carbohydrate monomers and non-standard

residues in protein, DNA, RNA chains that are outliers for geometric or electron-density-fit criteria:

Mol	Type	Chain	Res	Chirality	Geometry	Clashes	Electron density
3	EDO	A	1353	-	-	-	X
3	EDO	A	1357	-	-	-	X
3	EDO	B	1352	-	-	-	X
3	EDO	B	1353	-	-	-	X
3	EDO	B	1354	-	-	-	X
3	EDO	B	1355	-	-	-	X
3	EDO	B	1356	-	-	-	X
3	EDO	B	1362	-	-	X	X
3	EDO	B	1363	-	-	-	X
3	EDO	B	1364	-	-	-	X
3	EDO	B	1365	-	-	-	X
3	EDO	B	1366	-	-	-	X
3	EDO	C	1351	-	-	-	X
3	EDO	C	1352	-	-	-	X
3	EDO	C	1354	-	-	-	X
3	EDO	C	1356	-	-	-	X
3	EDO	C	1357	-	-	X	X
3	EDO	D	1353	-	-	-	X
3	EDO	D	1354	-	-	-	X
3	EDO	D	1358	-	-	X	X
3	EDO	D	1362	-	-	-	X
3	EDO	D	1363	-	-	X	-
5	MLI	A	1360	-	-	-	X
5	MLI	B	1368	-	-	-	X
7	GOL	C	1359	-	-	-	X

2 Entry composition

There are 8 unique types of molecules in this entry. The entry contains 9832 atoms, of which 0 are hydrogens and 0 are deuteriums.

In the tables below, the ZeroOcc column contains the number of atoms modelled with zero occupancy, the AltConf column contains the number of residues with at least one atom in alternate conformation and the Trace column contains the number of residues modelled with at most 2 atoms.

- Molecule 1 is a protein called ACETYLGLUTAMATE KINASE.

Mol	Chain	Residues	Atoms					ZeroOcc	AltConf	Trace
1	A	291	Total	C	N	O	S	0	3	0
			2274	1443	387	436	8			
1	B	289	Total	C	N	O	S	0	3	0
			2259	1434	382	435	8			
1	C	288	Total	C	N	O	S	0	3	0
			2251	1429	379	436	7			
1	D	289	Total	C	N	O	S	0	5	0
			2275	1443	385	439	8			

There are 32 discrepancies between the modelled and reference sequences:

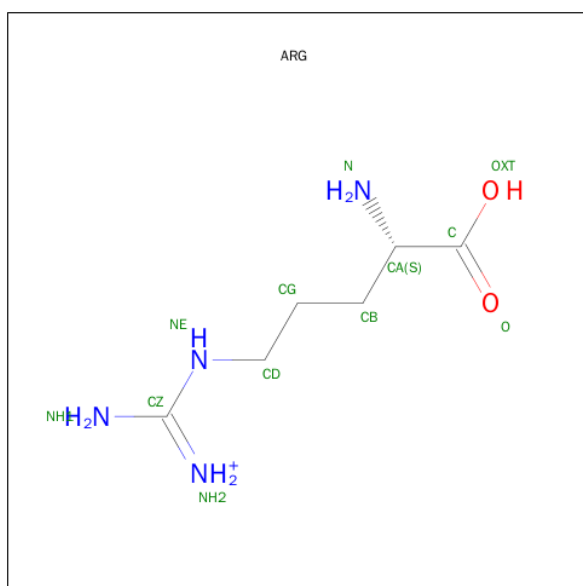
Chain	Residue	Modelled	Actual	Comment	Reference
A	50	MET	-	EXPRESSION TAG	UNP Q01217
A	51	GLY	-	EXPRESSION TAG	UNP Q01217
A	52	HIS	-	EXPRESSION TAG	UNP Q01217
A	53	HIS	-	EXPRESSION TAG	UNP Q01217
A	54	HIS	-	EXPRESSION TAG	UNP Q01217
A	55	HIS	-	EXPRESSION TAG	UNP Q01217
A	56	HIS	-	EXPRESSION TAG	UNP Q01217
A	57	HIS	-	EXPRESSION TAG	UNP Q01217
B	50	MET	-	EXPRESSION TAG	UNP Q01217
B	51	GLY	-	EXPRESSION TAG	UNP Q01217
B	52	HIS	-	EXPRESSION TAG	UNP Q01217
B	53	HIS	-	EXPRESSION TAG	UNP Q01217
B	54	HIS	-	EXPRESSION TAG	UNP Q01217
B	55	HIS	-	EXPRESSION TAG	UNP Q01217
B	56	HIS	-	EXPRESSION TAG	UNP Q01217
B	57	HIS	-	EXPRESSION TAG	UNP Q01217
C	50	MET	-	EXPRESSION TAG	UNP Q01217
C	51	GLY	-	EXPRESSION TAG	UNP Q01217
C	52	HIS	-	EXPRESSION TAG	UNP Q01217
C	53	HIS	-	EXPRESSION TAG	UNP Q01217
C	54	HIS	-	EXPRESSION TAG	UNP Q01217

Continued on next page...

Continued from previous page...

Chain	Residue	Modelled	Actual	Comment	Reference
C	55	HIS	-	EXPRESSION TAG	UNP Q01217
C	56	HIS	-	EXPRESSION TAG	UNP Q01217
C	57	HIS	-	EXPRESSION TAG	UNP Q01217
D	50	MET	-	EXPRESSION TAG	UNP Q01217
D	51	GLY	-	EXPRESSION TAG	UNP Q01217
D	52	HIS	-	EXPRESSION TAG	UNP Q01217
D	53	HIS	-	EXPRESSION TAG	UNP Q01217
D	54	HIS	-	EXPRESSION TAG	UNP Q01217
D	55	HIS	-	EXPRESSION TAG	UNP Q01217
D	56	HIS	-	EXPRESSION TAG	UNP Q01217
D	57	HIS	-	EXPRESSION TAG	UNP Q01217

- Molecule 2 is ARGinine (three-letter code: ARG) (formula: $C_6H_{15}N_4O_2$).



Mol	Chain	Residues	Atoms				ZeroOcc	AltConf
2	C	1	Total	C	N	O	0	0
			12	6	4	2		

- Molecule 3 is 1,2-ETHANEDIOL (three-letter code: EDO) (formula: $C_2H_6O_2$).



Mol	Chain	Residues	Atoms			ZeroOcc	AltConf
3	A	1	Total	C	O	0	0
			4	2	2		
3	A	1	Total	C	O	0	0
			4	2	2		
3	A	1	Total	C	O	0	0
			4	2	2		
3	A	1	Total	C	O	0	0
			4	2	2		
3	A	1	Total	C	O	0	0
			4	2	2		
3	B	1	Total	C	O	0	0
			4	2	2		
3	B	1	Total	C	O	0	0
			4	2	2		
3	B	1	Total	C	O	0	0
			4	2	2		
3	B	1	Total	C	O	0	0
			4	2	2		
3	B	1	Total	C	O	0	0
			4	2	2		
3	B	1	Total	C	O	0	0
			4	2	2		

Continued on next page...

Continued from previous page...

Mol	Chain	Residues	Atoms			ZeroOcc	AltConf
3	B	1	Total	C	O	0	0
			4	2	2		
3	B	1	Total	C	O	0	0
			4	2	2		
3	B	1	Total	C	O	0	0
			4	2	2		
3	B	1	Total	C	O	0	0
			4	2	2		
3	B	1	Total	C	O	0	0
			4	2	2		
3	B	1	Total	C	O	0	0
			4	2	2		
3	B	1	Total	C	O	0	0
			4	2	2		
3	C	1	Total	C	O	0	0
			4	2	2		
3	C	1	Total	C	O	0	0
			4	2	2		
3	C	1	Total	C	O	0	0
			4	2	2		
3	C	1	Total	C	O	0	0
			4	2	2		
3	C	1	Total	C	O	0	0
			4	2	2		
3	C	1	Total	C	O	0	0
			4	2	2		
3	C	1	Total	C	O	0	0
			4	2	2		
3	D	1	Total	C	O	0	0
			4	2	2		
3	D	1	Total	C	O	0	0
			4	2	2		
3	D	1	Total	C	O	0	0
			4	2	2		
3	D	1	Total	C	O	0	0
			4	2	2		

Continued on next page...

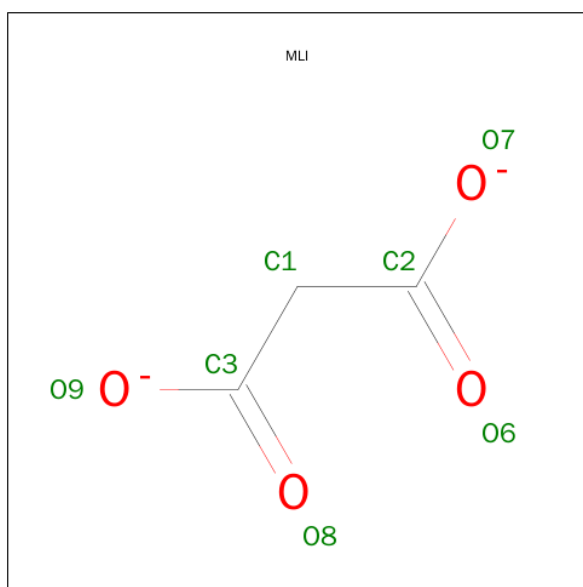
Continued from previous page...

Mol	Chain	Residues	Atoms	ZeroOcc	AltConf
3	D	1	Total C O 4 2 2	0	0
3	D	1	Total C O 4 2 2	0	0
3	D	1	Total C O 4 2 2	0	0
3	D	1	Total C O 4 2 2	0	0
3	D	1	Total C O 4 2 2	0	0
3	D	1	Total C O 4 2 2	0	0
3	D	1	Total C O 4 2 2	0	0
3	D	1	Total C O 4 2 2	0	0
3	D	1	Total C O 4 2 2	0	0
3	D	1	Total C O 4 2 2	0	0

- Molecule 4 is CHLORIDE ION (three-letter code: CL) (formula: Cl).

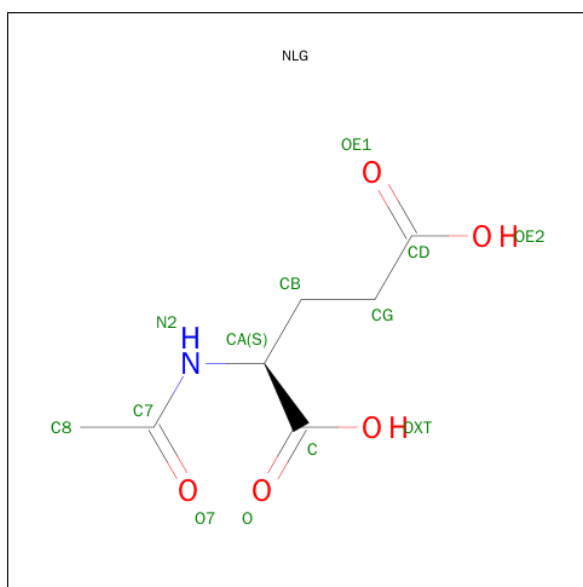
Mol	Chain	Residues	Atoms	ZeroOcc	AltConf
4	B	1	Total Cl 1 1	0	0
4	A	1	Total Cl 1 1	0	0
4	D	2	Total Cl 2 2	0	0
4	C	1	Total Cl 1 1	0	0

- Molecule 5 is MALONATE ION (three-letter code: MLI) (formula: C₃H₂O₄).



Mol	Chain	Residues	Atoms			ZeroOcc	AltConf
5	A	1	Total	C	O	0	0
			7	3	4		
5	B	1	Total	C	O	0	0
			7	3	4		
5	D	1	Total	C	O	0	0
			7	3	4		

- Molecule 6 is N-ACETYL-L-GLUTAMATE (three-letter code: NLG) (formula: $C_7H_{11}NO_5$).



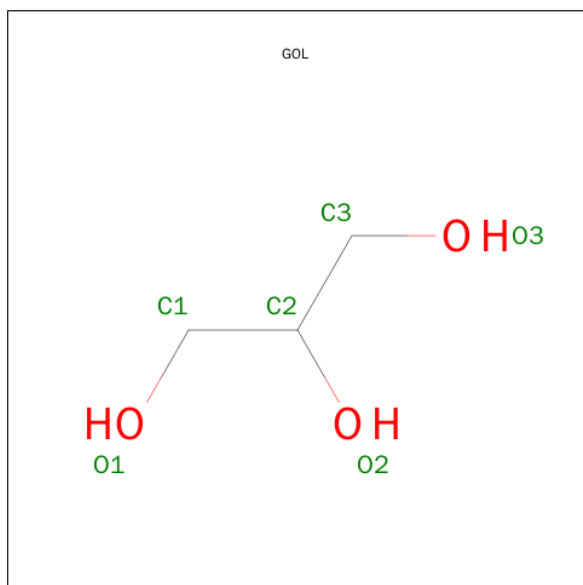
Mol	Chain	Residues	Atoms				ZeroOcc	AltConf
6	A	1	Total	C	N	O	0	0
			13	7	1	5		

Continued on next page...

Continued from previous page...

Mol	Chain	Residues	Atoms				ZeroOcc	AltConf
6	B	1	Total	C	N	O	0	0
			13	7	1	5		
6	C	1	Total	C	N	O	0	0
			13	7	1	5		
6	D	1	Total	C	N	O	0	0
			13	7	1	5		

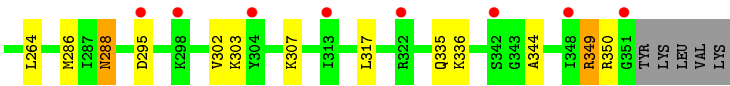
- Molecule 7 is GLYCEROL (three-letter code: GOL) (formula: $C_3H_8O_3$).



Mol	Chain	Residues	Atoms			ZeroOcc	AltConf
7	C	1	Total	C	O	0	0
			6	3	3		

- Molecule 8 is water.

Mol	Chain	Residues	Atoms		ZeroOcc	AltConf
8	A	123	Total	O	0	0
			123	123		
8	B	144	Total	O	0	0
			144	144		
8	C	91	Total	O	0	0
			91	91		
8	D	139	Total	O	0	0
			139	139		



4 Data and refinement statistics

Property	Value	Source
Space group	P 21 21 21	Depositor
Cell constants a, b, c, α , β , γ	69.49 Å 99.60 Å 189.24 Å 90.00° 90.00° 90.00°	Depositor
Resolution (Å)	20.00 – 2.10 24.43 – 2.10	Depositor EDS
% Data completeness (in resolution range)	99.3 (20.00-2.10) 99.3 (24.43-2.10)	Depositor EDS
R_{merge}	0.13	Depositor
R_{sym}	(Not available)	Depositor
$\langle I/\sigma(I) \rangle$ ¹	3.55 (at 2.10 Å)	Xtriage
Refinement program	REFMAC 5.5.0109	Depositor
R, R_{free}	0.180 , 0.215 0.194 , 0.230	Depositor DCC
R_{free} test set	3865 reflections (5.30%)	DCC
Wilson B-factor (Å ²)	19.7	Xtriage
Anisotropy	0.119	Xtriage
Bulk solvent k_{sol} (e/Å ³), B_{sol} (Å ²)	0.40 , 46.3	EDS
Estimated twinning fraction	No twinning to report.	Xtriage
L-test for twinning ²	$\langle L \rangle = 0.49$, $\langle L^2 \rangle = 0.32$	Xtriage
Outliers	0 of 76958 reflections	Xtriage
F_o, F_c correlation	0.94	EDS
Total number of atoms	9832	wwPDB-VP
Average B, all atoms (Å ²)	22.0	wwPDB-VP

Xtriage's analysis on translational NCS is as follows: *The largest off-origin peak in the Patterson function is 3.92% of the height of the origin peak. No significant pseudotranslation is detected.*

¹Intensities estimated from amplitudes.

²Theoretical values of $\langle |L| \rangle$, $\langle L^2 \rangle$ for acentric reflections are 0.5, 0.375 respectively for untwinned datasets, and 0.333, 0.2 for perfectly twinned datasets.

5 Model quality [i](#)

5.1 Standard geometry [i](#)

Bond lengths and bond angles in the following residue types are not validated in this section: GOL, MLI, EDO, NLG, CL

The Z score for a bond length (or angle) is the number of standard deviations the observed value is removed from the expected value. A bond length (or angle) with $|Z| > 5$ is considered an outlier worth inspection. RMSZ is the root-mean-square of all Z scores of the bond lengths (or angles).

Mol	Chain	Bond lengths		Bond angles	
		RMSZ	$\# Z > 5$	RMSZ	$\# Z > 5$
1	A	0.34	0/2307	0.52	0/3118
1	B	0.37	0/2291	0.53	0/3097
1	C	0.35	0/2283	0.52	0/3088
1	D	0.35	0/2307	0.54	0/3117
All	All	0.35	0/9188	0.53	0/12420

There are no bond length outliers.

There are no bond angle outliers.

There are no chirality outliers.

There are no planarity outliers.

5.2 Too-close contacts [i](#)

In the following table, the Non-H and H(model) columns list the number of non-hydrogen atoms and hydrogen atoms in the chain respectively. The H(added) column lists the number of hydrogen atoms added and optimized by MolProbity. The Clashes column lists the number of clashes within the asymmetric unit, whereas Symm-Clashes lists symmetry related clashes.

Mol	Chain	Non-H	H(model)	H(added)	Clashes	Symm-Clashes
1	A	2274	0	2323	17	0
1	B	2259	0	2305	24	0
1	C	2251	0	2289	31	0
1	D	2275	0	2325	33	0
2	C	12	0	12	0	0
3	A	24	0	36	5	0
3	B	64	0	96	17	0
3	C	32	0	48	16	0
3	D	60	0	90	19	0

Continued on next page...

Continued from previous page...

Mol	Chain	Non-H	H(model)	H(added)	Clashes	Symm-Clashes
4	A	1	0	0	0	0
4	B	1	0	0	0	0
4	C	1	0	0	0	0
4	D	2	0	0	0	0
5	A	7	0	2	0	0
5	B	7	0	2	1	0
5	D	7	0	2	0	0
6	A	13	0	9	0	0
6	B	13	0	9	0	0
6	C	13	0	9	0	0
6	D	13	0	9	0	0
7	C	6	0	8	0	0
8	A	123	0	0	0	0
8	B	144	0	0	6	0
8	C	91	0	0	2	0
8	D	139	0	0	2	0
All	All	9832	0	9574	114	0

The all-atom clashscore is defined as the number of clashes found per 1000 atoms (including hydrogen atoms). The all-atom clashscore for this structure is 6.

The worst 5 of 114 close contacts within the same asymmetric unit are listed below, sorted by their clash magnitude.

Atom-1	Atom-2	Interatomic distance (Å)	Clash overlap (Å)
1:D:119[B]:CYS:SG	1:D:335[B]:GLN:NE2	2.06	1.29
1:D:185:GLN:HE21	3:D:1363:EDO:C1	1.75	0.99
1:B:119[B]:CYS:SG	1:B:335[B]:GLN:NE2	2.35	0.99
1:A:119[B]:CYS:SG	1:A:334:LEU:HD23	2.07	0.93
1:C:173:LEU:HD11	3:C:1357:EDO:H22	1.54	0.87

There are no symmetry-related clashes.

5.3 Torsion angles [i](#)

5.3.1 Protein backbone [i](#)

In the following table, the Percentiles column shows the percent Ramachandran outliers of the chain as a percentile score with respect to all X-ray entries followed by that with respect to entries of similar resolution.

The Analysed column shows the number of residues for which the backbone conformation was analysed, and the total number of residues.

Mol	Chain	Analysed	Favoured	Allowed	Outliers	Percentiles	
1	A	292/307 (95%)	283 (97%)	8 (3%)	1 (0%)	46	45
1	B	290/307 (94%)	283 (98%)	6 (2%)	1 (0%)	46	45
1	C	289/307 (94%)	282 (98%)	7 (2%)	0	100	100
1	D	292/307 (95%)	285 (98%)	6 (2%)	1 (0%)	46	45
All	All	1163/1228 (95%)	1133 (97%)	27 (2%)	3 (0%)	46	45

All (3) Ramachandran outliers are listed below:

Mol	Chain	Res	Type
1	D	95	SER
1	A	136	THR
1	B	304	TYR

5.3.2 Protein sidechains ⓘ

In the following table, the Percentiles column shows the percent sidechain outliers of the chain as a percentile score with respect to all X-ray entries followed by that with respect to entries of similar resolution.

The Analysed column shows the number of residues for which the sidechain conformation was analysed, and the total number of residues.

Mol	Chain	Analysed	Rotameric	Outliers	Percentiles	
1	A	249/262 (95%)	239 (96%)	10 (4%)	38	38
1	B	247/262 (94%)	239 (97%)	8 (3%)	46	48
1	C	246/262 (94%)	239 (97%)	7 (3%)	51	55
1	D	250/262 (95%)	239 (96%)	11 (4%)	35	33
All	All	992/1048 (95%)	956 (96%)	36 (4%)	41	43

5 of 36 residues with a non-rotameric sidechain are listed below:

Mol	Chain	Res	Type
1	B	304	TYR
1	C	277	ASN
1	D	336	LYS
1	C	213	ASN
1	C	308	LEU

Some sidechains can be flipped to improve hydrogen bonding and reduce clashes. 5 of 22 such sidechains are listed below:

Mol	Chain	Res	Type
1	B	332	GLN
1	C	213	ASN
1	D	249	ASN
1	C	76	ASN
1	C	112	ASN

5.3.3 RNA [i](#)

There are no RNA molecules in this entry.

5.4 Non-standard residues in protein, DNA, RNA chains [i](#)

There are no non-standard protein/DNA/RNA residues in this entry.

5.5 Carbohydrates [i](#)

There are no carbohydrates in this entry.

5.6 Ligand geometry [i](#)

Of 59 ligands modelled in this entry, 5 are monoatomic - leaving 54 for Mogul analysis.

In the following table, the Counts columns list the number of bonds (or angles) for which Mogul statistics could be retrieved, the number of bonds (or angles) that are observed in the model and the number of bonds (or angles) that are defined in the chemical component dictionary. The Link column lists molecule types, if any, to which the group is linked. The Z score for a bond length (or angle) is the number of standard deviations the observed value is removed from the expected value. A bond length (or angle) with $|Z| > 2$ is considered an outlier worth inspection. RMSZ is the root-mean-square of all Z scores of the bond lengths (or angles).

Mol	Type	Chain	Res	Link	Bond lengths			Bond angles		
					Counts	RMSZ	$\# Z > 2$	Counts	RMSZ	$\# Z > 2$
3	EDO	A	1353	-	3,3,3	0.70	0	2,2,2	0.26	0
3	EDO	A	1354	-	3,3,3	0.53	0	2,2,2	0.38	0
3	EDO	A	1355	-	3,3,3	0.57	0	2,2,2	0.30	0
3	EDO	A	1356	-	3,3,3	0.59	0	2,2,2	0.27	0
3	EDO	A	1357	-	3,3,3	0.49	0	2,2,2	0.33	0
3	EDO	A	1358	-	3,3,3	0.46	0	2,2,2	0.46	0
5	MLI	A	1360	-	0,6,6	0.00	-	0,7,7	0.00	-

Mol	Type	Chain	Res	Link	Bond lengths			Bond angles		
					Counts	RMSZ	# Z > 2	Counts	RMSZ	# Z > 2
6	NLG	A	1361	-	6,12,12	2.19	1 (16%)	5,15,15	1.24	1 (20%)
3	EDO	B	1351	-	3,3,3	0.52	0	2,2,2	0.32	0
3	EDO	B	1352	-	3,3,3	0.58	0	2,2,2	0.40	0
3	EDO	B	1353	-	3,3,3	0.45	0	2,2,2	0.36	0
3	EDO	B	1354	-	3,3,3	0.49	0	2,2,2	0.41	0
3	EDO	B	1355	-	3,3,3	0.41	0	2,2,2	0.49	0
3	EDO	B	1356	-	3,3,3	0.55	0	2,2,2	0.37	0
3	EDO	B	1357	-	3,3,3	0.49	0	2,2,2	0.42	0
3	EDO	B	1358	-	3,3,3	0.43	0	2,2,2	0.53	0
3	EDO	B	1359	-	3,3,3	0.47	0	2,2,2	0.40	0
3	EDO	B	1360	-	3,3,3	0.52	0	2,2,2	0.35	0
3	EDO	B	1361	-	3,3,3	0.49	0	2,2,2	0.35	0
3	EDO	B	1362	-	3,3,3	0.56	0	2,2,2	0.30	0
3	EDO	B	1363	-	3,3,3	0.49	0	2,2,2	0.44	0
3	EDO	B	1364	-	3,3,3	0.55	0	2,2,2	0.25	0
3	EDO	B	1365	-	3,3,3	0.52	0	2,2,2	0.39	0
3	EDO	B	1366	-	3,3,3	0.55	0	2,2,2	0.37	0
5	MLI	B	1368	-	0,6,6	0.00	-	0,7,7	0.00	-
6	NLG	B	1369	-	6,12,12	2.41	2 (33%)	5,15,15	0.96	0
3	EDO	C	1351	-	3,3,3	0.49	0	2,2,2	0.37	0
3	EDO	C	1352	-	3,3,3	0.74	0	2,2,2	0.25	0
3	EDO	C	1353	-	3,3,3	0.45	0	2,2,2	0.37	0
3	EDO	C	1354	-	3,3,3	0.46	0	2,2,2	0.39	0
3	EDO	C	1355	-	3,3,3	0.49	0	2,2,2	0.41	0
3	EDO	C	1356	-	3,3,3	0.55	0	2,2,2	0.40	0
3	EDO	C	1357	-	3,3,3	0.51	0	2,2,2	0.19	0
3	EDO	C	1358	-	3,3,3	0.50	0	2,2,2	0.45	0
7	GOL	C	1359	-	5,5,5	0.54	0	5,5,5	0.49	0
6	NLG	C	1361	-	6,12,12	2.07	1 (16%)	5,15,15	1.01	0
2	ARG	C	1362	-	5,11,11	0.24	0	3,13,13	0.16	0
3	EDO	D	1352	-	3,3,3	0.54	0	2,2,2	0.36	0
3	EDO	D	1353	-	3,3,3	0.44	0	2,2,2	0.34	0
3	EDO	D	1354	-	3,3,3	0.56	0	2,2,2	0.29	0
3	EDO	D	1355	-	3,3,3	0.51	0	2,2,2	0.42	0
3	EDO	D	1356	-	3,3,3	0.52	0	2,2,2	0.33	0
3	EDO	D	1357	-	3,3,3	0.44	0	2,2,2	0.47	0
3	EDO	D	1358	-	3,3,3	0.45	0	2,2,2	0.48	0
3	EDO	D	1359	-	3,3,3	0.54	0	2,2,2	0.37	0
3	EDO	D	1360	-	3,3,3	0.49	0	2,2,2	0.37	0
3	EDO	D	1361	-	3,3,3	0.61	0	2,2,2	0.33	0
3	EDO	D	1362	-	3,3,3	0.52	0	2,2,2	0.31	0
3	EDO	D	1363	-	3,3,3	0.43	0	2,2,2	0.36	0

Mol	Type	Chain	Res	Link	Bond lengths			Bond angles		
					Counts	RMSZ	# Z > 2	Counts	RMSZ	# Z > 2
3	EDO	D	1364	-	3,3,3	0.53	0	2,2,2	0.25	0
3	EDO	D	1365	-	3,3,3	0.56	0	2,2,2	0.34	0
3	EDO	D	1366	-	3,3,3	0.46	0	2,2,2	0.40	0
5	MLI	D	1369	-	0,6,6	0.00	-	0,7,7	0.00	-
6	NLG	D	1370	-	6,12,12	2.38	2 (33%)	5,15,15	1.42	1 (20%)

In the following table, the Chirals column lists the number of chiral outliers, the number of chiral centers analysed, the number of these observed in the model and the number defined in the chemical component dictionary. Similar counts are reported in the Torsion and Rings columns. '-' means no outliers of that kind were identified.

Mol	Type	Chain	Res	Link	Chirals	Torsions	Rings
3	EDO	A	1353	-	-	0/1/1/1	0/0/0/0
3	EDO	A	1354	-	-	0/1/1/1	0/0/0/0
3	EDO	A	1355	-	-	0/1/1/1	0/0/0/0
3	EDO	A	1356	-	-	0/1/1/1	0/0/0/0
3	EDO	A	1357	-	-	0/1/1/1	0/0/0/0
3	EDO	A	1358	-	-	0/1/1/1	0/0/0/0
5	MLI	A	1360	-	-	0/0/4/4	0/0/0/0
6	NLG	A	1361	-	-	0/7/13/13	0/0/0/0
3	EDO	B	1351	-	-	0/1/1/1	0/0/0/0
3	EDO	B	1352	-	-	0/1/1/1	0/0/0/0
3	EDO	B	1353	-	-	0/1/1/1	0/0/0/0
3	EDO	B	1354	-	-	0/1/1/1	0/0/0/0
3	EDO	B	1355	-	-	0/1/1/1	0/0/0/0
3	EDO	B	1356	-	-	0/1/1/1	0/0/0/0
3	EDO	B	1357	-	-	0/1/1/1	0/0/0/0
3	EDO	B	1358	-	-	0/1/1/1	0/0/0/0
3	EDO	B	1359	-	-	0/1/1/1	0/0/0/0
3	EDO	B	1360	-	-	0/1/1/1	0/0/0/0
3	EDO	B	1361	-	-	0/1/1/1	0/0/0/0
3	EDO	B	1362	-	-	0/1/1/1	0/0/0/0
3	EDO	B	1363	-	-	0/1/1/1	0/0/0/0
3	EDO	B	1364	-	-	0/1/1/1	0/0/0/0
3	EDO	B	1365	-	-	0/1/1/1	0/0/0/0
3	EDO	B	1366	-	-	0/1/1/1	0/0/0/0
5	MLI	B	1368	-	-	0/0/4/4	0/0/0/0
6	NLG	B	1369	-	-	0/7/13/13	0/0/0/0
3	EDO	C	1351	-	-	0/1/1/1	0/0/0/0
3	EDO	C	1352	-	-	0/1/1/1	0/0/0/0
3	EDO	C	1353	-	-	0/1/1/1	0/0/0/0
3	EDO	C	1354	-	-	0/1/1/1	0/0/0/0

Continued on next page...

Continued from previous page...

Mol	Type	Chain	Res	Link	Chirals	Torsions	Rings
3	EDO	C	1355	-	-	0/1/1/1	0/0/0/0
3	EDO	C	1356	-	-	0/1/1/1	0/0/0/0
3	EDO	C	1357	-	-	0/1/1/1	0/0/0/0
3	EDO	C	1358	-	-	0/1/1/1	0/0/0/0
7	GOL	C	1359	-	-	0/4/4/4	0/0/0/0
6	NLG	C	1361	-	-	0/7/13/13	0/0/0/0
2	ARG	C	1362	-	-	0/5/11/11	0/0/0/0
3	EDO	D	1352	-	-	0/1/1/1	0/0/0/0
3	EDO	D	1353	-	-	0/1/1/1	0/0/0/0
3	EDO	D	1354	-	-	0/1/1/1	0/0/0/0
3	EDO	D	1355	-	-	0/1/1/1	0/0/0/0
3	EDO	D	1356	-	-	0/1/1/1	0/0/0/0
3	EDO	D	1357	-	-	0/1/1/1	0/0/0/0
3	EDO	D	1358	-	-	0/1/1/1	0/0/0/0
3	EDO	D	1359	-	-	0/1/1/1	0/0/0/0
3	EDO	D	1360	-	-	0/1/1/1	0/0/0/0
3	EDO	D	1361	-	-	0/1/1/1	0/0/0/0
3	EDO	D	1362	-	-	0/1/1/1	0/0/0/0
3	EDO	D	1363	-	-	0/1/1/1	0/0/0/0
3	EDO	D	1364	-	-	0/1/1/1	0/0/0/0
3	EDO	D	1365	-	-	0/1/1/1	0/0/0/0
3	EDO	D	1366	-	-	0/1/1/1	0/0/0/0
5	MLI	D	1369	-	-	0/0/4/4	0/0/0/0
6	NLG	D	1370	-	-	0/7/13/13	0/0/0/0

The worst 5 of 6 bond length outliers are listed below:

Mol	Chain	Res	Type	Atoms	Z	Observed(Å)	Ideal(Å)
6	D	1370	NLG	C8-C7	-5.36	1.39	1.50
6	B	1369	NLG	C8-C7	-5.31	1.39	1.50
6	A	1361	NLG	C8-C7	-5.04	1.40	1.50
6	C	1361	NLG	C8-C7	-5.04	1.40	1.50
6	D	1370	NLG	CB-CA	2.08	1.56	1.53

All (2) bond angle outliers are listed below:

Mol	Chain	Res	Type	Atoms	Z	Observed(°)	Ideal(°)
6	D	1370	NLG	O7-C7-C8	-2.60	117.28	122.06
6	A	1361	NLG	O7-C7-C8	-2.31	117.83	122.06

There are no chirality outliers.

There are no torsion outliers.

There are no ring outliers.

26 monomers are involved in 58 short contacts:

Mol	Chain	Res	Type	Clashes	Symm-Clashes
3	A	1353	EDO	1	0
3	A	1356	EDO	2	0
3	A	1358	EDO	2	0
3	B	1352	EDO	1	0
3	B	1353	EDO	2	0
3	B	1354	EDO	1	0
3	B	1358	EDO	1	0
3	B	1360	EDO	2	0
3	B	1361	EDO	2	0
3	B	1362	EDO	4	0
3	B	1364	EDO	3	0
3	B	1366	EDO	1	0
5	B	1368	MLI	1	0
3	C	1351	EDO	3	0
3	C	1352	EDO	1	0
3	C	1353	EDO	2	0
3	C	1354	EDO	3	0
3	C	1355	EDO	1	0
3	C	1356	EDO	1	0
3	C	1357	EDO	5	0
3	D	1353	EDO	1	0
3	D	1358	EDO	4	0
3	D	1362	EDO	2	0
3	D	1363	EDO	9	0
3	D	1364	EDO	2	0
3	D	1365	EDO	1	0

5.7 Other polymers [i](#)

There are no such residues in this entry.

5.8 Polymer linkage issues [i](#)

There are no chain breaks in this entry.

6 Fit of model and data [i](#)

6.1 Protein, DNA and RNA chains [i](#)

In the following table, the column labelled ‘#RSRZ> 2’ contains the number (and percentage) of RSRZ outliers, followed by percent RSRZ outliers for the chain as percentile scores relative to all X-ray entries and entries of similar resolution. The OWAB column contains the minimum, median, 95th percentile and maximum values of the occupancy-weighted average B-factor per residue. The column labelled ‘Q< 0.9’ lists the number of (and percentage) of residues with an average occupancy less than 0.9.

Mol	Chain	Analysed	<RSRZ>	#RSRZ>2	OWAB(Å ²)	Q<0.9
1	A	291/307 (94%)	0.17	12 (4%) 41 50	9, 19, 40, 54	0
1	B	289/307 (94%)	-0.02	5 (1%) 73 78	8, 16, 31, 38	0
1	C	288/307 (93%)	0.50	28 (9%) 10 14	9, 20, 82, 115	0
1	D	289/307 (94%)	0.19	14 (4%) 34 43	7, 17, 36, 59	0
All	All	1157/1228 (94%)	0.21	59 (5%) 32 40	7, 18, 47, 115	0

The worst 5 of 59 RSRZ outliers are listed below:

Mol	Chain	Res	Type	RSRZ
1	D	96	GLN	10.0
1	D	94	VAL	8.8
1	C	302	VAL	7.0
1	C	296	LEU	6.7
1	A	94	VAL	6.4

6.2 Non-standard residues in protein, DNA, RNA chains [i](#)

There are no non-standard protein/DNA/RNA residues in this entry.

6.3 Carbohydrates [i](#)

There are no carbohydrates in this entry.

6.4 Ligands [i](#)

In the following table, the Atoms column lists the number of modelled atoms in the group and the number defined in the chemical component dictionary. LLDF column lists the quality of electron density of the group with respect to its neighbouring residues in protein, DNA or RNA chains. The B-factors column lists the minimum, median, 95th percentile and maximum values of B factors

of atoms in the group. The column labelled 'Q< 0.9' lists the number of atoms with occupancy less than 0.9.

Mol	Type	Chain	Res	Atoms	RSCC	RSR	LLDF	B-factors(\AA^2)	Q<0.9
3	EDO	A	1353	4/4	0.66	0.36	13.12	31,33,33,33	0
3	EDO	C	1356	4/4	0.85	0.21	9.50	33,34,34,34	0
3	EDO	B	1365	4/4	0.83	0.22	9.35	29,31,31,32	0
3	EDO	A	1357	4/4	0.84	0.33	8.16	35,36,36,37	0
3	EDO	D	1353	4/4	0.87	0.20	7.93	31,32,33,34	0
3	EDO	C	1357	4/4	0.86	0.26	7.72	27,28,29,29	0
3	EDO	B	1352	4/4	0.84	0.28	7.52	20,22,23,24	0
3	EDO	B	1366	4/4	0.87	0.27	6.35	43,43,43,44	0
3	EDO	D	1362	4/4	0.71	0.35	6.22	53,53,53,53	0
3	EDO	C	1352	4/4	0.70	0.22	5.48	25,28,28,30	0
5	MLI	A	1360	7/7	0.67	0.26	5.40	33,36,38,38	0
3	EDO	B	1355	4/4	0.81	0.34	4.93	39,39,40,40	0
3	EDO	C	1354	4/4	0.79	0.32	4.65	42,42,42,42	0
3	EDO	B	1363	4/4	0.75	0.28	3.86	48,49,49,49	0
7	GOL	C	1359	6/6	0.69	0.24	3.52	35,36,36,37	0
3	EDO	B	1364	4/4	0.87	0.20	3.51	32,32,34,35	0
3	EDO	B	1362	4/4	0.83	0.16	3.16	52,52,52,52	0
3	EDO	C	1351	4/4	0.81	0.16	3.13	32,34,35,36	0
3	EDO	D	1358	4/4	0.97	0.24	2.87	22,23,24,24	0
3	EDO	B	1356	4/4	0.48	0.25	2.78	51,52,52,52	0
3	EDO	B	1353	4/4	0.92	0.17	2.67	29,31,31,33	0
3	EDO	D	1354	4/4	0.83	0.20	2.36	41,42,42,42	0
5	MLI	B	1368	7/7	0.82	0.18	2.36	26,27,28,28	0
3	EDO	B	1354	4/4	0.90	0.17	2.14	44,45,45,45	0
3	EDO	C	1358	4/4	0.89	0.14	1.72	45,45,45,45	0
3	EDO	A	1356	4/4	0.77	0.18	1.50	41,41,41,41	0
3	EDO	B	1361	4/4	0.77	0.27	1.44	51,52,52,52	0
3	EDO	C	1353	4/4	0.93	0.22	1.41	35,35,35,35	0
3	EDO	D	1356	4/4	0.80	0.24	1.33	46,46,46,46	0
3	EDO	B	1358	4/4	0.75	0.22	0.99	45,46,46,46	0
3	EDO	A	1354	4/4	0.84	0.19	0.79	48,49,49,49	0
3	EDO	A	1358	4/4	0.81	0.16	0.79	41,41,42,42	0
3	EDO	D	1364	4/4	0.82	0.15	0.71	35,35,36,36	0
3	EDO	B	1357	4/4	0.82	0.14	0.67	51,51,51,52	0
5	MLI	D	1369	7/7	0.90	0.11	0.50	23,26,27,27	0
3	EDO	A	1355	4/4	0.89	0.13	0.22	33,35,36,36	0
6	NLG	B	1369	13/13	0.95	0.11	-0.18	9,15,15,16	0
3	EDO	D	1365	4/4	0.79	0.16	-0.35	35,35,35,35	0
3	EDO	B	1351	4/4	0.94	0.09	-0.39	24,26,26,26	0
6	NLG	D	1370	13/13	0.96	0.09	-0.55	10,15,17,18	0

Continued on next page...

Continued from previous page...

Mol	Type	Chain	Res	Atoms	RSCC	RSR	LLDF	B-factors(\AA^2)	Q<0.9
2	ARG	C	1362	12/12	0.88	0.11	-0.61	28,28,30,30	0
6	NLG	A	1361	13/13	0.96	0.09	-0.69	12,14,14,15	0
6	NLG	C	1361	13/13	0.95	0.09	-0.77	12,13,14,14	0
4	CL	A	1359	1/1	0.99	0.06	-1.50	25,25,25,25	0
4	CL	D	1367	1/1	0.99	0.07	-1.56	19,19,19,19	0
4	CL	B	1367	1/1	1.00	0.06	-1.61	21,21,21,21	0
3	EDO	D	1361	4/4	0.63	0.27	-	36,37,37,38	0
3	EDO	D	1352	4/4	0.78	0.25	-	32,32,33,33	0
3	EDO	D	1360	4/4	0.82	0.28	-	38,40,40,40	0
3	EDO	D	1355	4/4	0.83	0.31	-	33,34,34,34	0
4	CL	D	1368	1/1	0.99	0.16	-	29,29,29,29	0
3	EDO	C	1355	4/4	0.83	0.20	-	53,53,53,53	0
4	CL	C	1360	1/1	0.94	0.05	-	36,36,36,36	0
3	EDO	D	1363	4/4	0.84	0.31	-	34,35,35,36	0
3	EDO	B	1360	4/4	0.74	0.32	-	50,50,50,51	0
3	EDO	D	1359	4/4	0.77	0.16	-	49,49,49,49	0
3	EDO	B	1359	4/4	0.88	0.16	-	38,39,39,40	0
3	EDO	D	1366	4/4	0.76	0.35	-	36,37,37,38	0
3	EDO	D	1357	4/4	0.82	0.16	-	45,45,45,46	0

6.5 Other polymers [i](#)

There are no such residues in this entry.